

**The Project Gutenberg eBook of Descriptions of Two Species of Frogs,  
Genus Ptychohyla, by William Edward Duellman**

This ebook is for the use of anyone anywhere in the United States and most other parts of the world at no cost and with almost no restrictions whatsoever. You may copy it, give it away or re-use it under the terms of the Project Gutenberg License included with this ebook or online at [www.gutenberg.org](http://www.gutenberg.org). If you are not located in the United States, you'll have to check the laws of the country where you are located before using this eBook.

**Title:** Descriptions of Two Species of Frogs, Genus Ptychohyla

**Author:** William Edward Duellman

**Release Date:** February 21, 2010 [EBook #31334]

**Language:** English

**Credits:** Produced by Chris Curnow, Joseph Cooper, Diane Monico, and the Online Distributed Proofreading Team at <https://www.pgdp.net>

\*\*\* START OF THE PROJECT GUTENBERG EBOOK DESCRIPTIONS OF TWO SPECIES OF  
FROGS, GENUS PTYCHOHYLA \*\*\*

UNIVERSITY OF KANSAS PUBLICATIONS  
MUSEUM OF NATURAL HISTORY

Volume 13, No. 8, Pl. 25, figs. 1-2, pp. 349-357  
April 27, 1961

---

**Descriptions of Two Species of Frogs,  
Genus Ptychohyla  
Studies of American Hylid Frogs, V**

BY

WILLIAM E. DUELLMAN

UNIVERSITY OF KANSAS  
LAWRENCE  
1961

---

UNIVERSITY OF KANSAS PUBLICATIONS, MUSEUM OF NATURAL HISTORY

Editors: E. Raymond Hall, Chairman, Henry S. Fitch,  
Robert W. Wilson

Volume 13, No. 8, Pl. 25, figs. 1-2, pp. 349-357  
Published April 27, 1961

UNIVERSITY OF KANSAS  
Lawrence, Kansas

PRINTED IN  
THE STATE PRINTING PLANT  
TOPEKA, KANSAS

## Descriptions of Two New Species of Frogs, Genus *Ptychohyla* Studies of American Hylid Frogs, V

[Pg 351]

BY

WILLIAM E. DUELLMAN

Field studies on hylid frogs in southern México and northern Central America have resulted in the collection of numerous specimens of *Ptychohyla*, a genus of hylid frogs heretofore poorly represented in museum collections. Experience with the living frogs in their natural habitats has been helpful in defining the species and in formulating ideas concerning their relationships.

Taylor (1944) proposed the generic name *Ptychohyla* for a new species of frog, *Ptychohyla adipoventris* [= *Ptychohyla leonhard-schultzei* (Ahl)—*fide* Duellman, 1960] from Agua del Obispo, Guerrero. Taylor defined the genus as having large ventrolateral glands and horny nuptial spines in males. Stuart (1954:169) discussed the generic characters and pointed out that both the ventrolateral glands and horny nuptial spines were seasonal in their development, being found only in breeding males. Stuart then went on to describe *Ptychohyla schmidtorum*, a species characterized by the absence of horny nuptial spines in breeding males. My investigations of these frogs have revealed the presence of two groups of species. In both groups breeding males have large ventrolateral glands, but the two groups are easily separated by four characters. The first group contains, among others, *Ptychohyla leonhard-schultzei*, *euthysanota*, *spinipollex*, and another species in the Mesa Central of Chiapas to which I tentatively apply the name *Ptychohyla macrotympanum* (Tanner), 1957. This group of species is characterized by horny nuptial spines in breeding males, presence of a tarsal fold, a call consisting of a single long note, and tadpoles having lips not greatly expanded. The second group, as recognized here, is characterized by the absence of horny nuptial spines in breeding males, lack of a tarsal fold, a call consisting of a series of short notes, and tadpoles having greatly expanded lips. In this group belong *Ptychohyla schmidtorum* and the two species described below.

Only the descriptions of the new species are given in this paper; detailed comparisons, descriptions of osteological features, analyses of calls, and discussions of relationships are reserved for a forthcoming review of the entire genus.

[Pg 352]

In the spring of 1959, collections of amphibians and reptiles were made in the cloud forests on the northern slopes of the Sierra Madre Oriental in northern Oaxaca. Among the hylids found, two specimens of a heretofore unnamed species of *Ptychohyla* have brilliant red flash-colors on the groin and thighs; in allusion to these fiery colors I propose that this species be named:

### ***Ptychohyla ignicolor*** new species

(Plate 25, [Fig. 1](#))

*Holotype*.—University of Michigan Museum of Zoology No. 119603, from a stream 6 kilometers south of Vista Hermosa, Oaxaca, México (1865 meters); obtained on March 31, 1959, by Thomas E. Moore. Original Number WED 14159.

*Paratype*.—UMMZ 119602 from Vista Hermosa, Oaxaca (1500 meters); obtained on March 30, 1959, by William E. Duellman.

*Diagnosis*.—A species of the *schmidtorum*-group of *Ptychohyla* differing from other known members of the group in having the diameter of the tympanum less than one-half the diameter of the eye, no white spot below the eye, no lateral light stripe, bright green dorsum in life and red flash-colors on groin and thighs.

*Description of Holotype*.—Adult male having a snout-vent length of 30.0 mm.; tibia length, 14.6 mm.; tibia length/snout-vent length, 48.7 per cent; foot length (measured from proximal edge of inner metatarsal tubercle to tip of longest toe), 12.3 mm.; head length, 9.2 mm.; head length/snout-vent length, 32.3 per cent; head width, 9.3 mm.; head width/snout-vent length, 31.0 per cent; diameter of eye, 3.2 mm.; diameter of tympanum, 1.3 mm.; tympanum/eye, 40.6 per cent. Snout in lateral profile square, in dorsal profile obtusely rounded; canthus pronounced; loreal region slightly concave; lips moderately flaring; top of head flat; nostrils protuberant; internarial distance, 2.8 mm.; interorbital distance, 3.3 mm., much broader than width of eyelid, 2.8 mm. A heavy dermal fold from posterior corner of eye above tympanum to insertion of forelimb, covering upper edge of tympanum; tympanum elliptical, its greatest diameter equal to its distance from eye. Forearm

robust with a distinct fold on wrist; pollex moderately enlarged without nuptial spines; second and fourth fingers equal in length; subarticular tubercles round; none is bifid; disc of third finger slightly larger than tympanum; no web between first and second fingers; vestige of web between other fingers. Heels overlap when hind limbs adpressed; tibiotarsal articulation extends to anterior corner of eye; no tarsal fold; inner metatarsal tubercle large, flat, and elliptical; outer metatarsal tubercle near inner one and triangular; subarticular tubercles round; length of digits from shortest to longest 1-2-5-3-4; toes about one-half webbed; discs smaller on toes than on fingers. Anal opening directed posteriorly at upper level of thighs; no anal flap; pair of large tubercles below anal opening; small tubercles ventral and lateral to these. Skin of dorsum and ventral surfaces of limbs smooth, that of throat and belly granular. Ventrolateral glands noticeably thickened, extending from axilla nearly to groin and only narrowly separated medially on chest. Skin of anterior part of chin thickened and glandular. Tongue cordiform, shallowly notched behind and only slightly free posteriorly; vomerine teeth 0-3, situated on rounded elevations between somewhat larger, round inner nares; openings to vocal sac large, one situated along posterior margin of each mandibular ramus.

## PLATE 25



**Fig. 1. Paratype of *Ptychohyla ignicolor*  
(UMMZ 119602). × 3.**



**Fig. 2. Holotype of *Ptychohyla chamulae*  
(KU 58063). × 3.**

Color (in alcohol) dull brown above with irregular dark brown blotches; dorsal surfaces of limbs brown with narrow darker brown transverse bars; posterior

surfaces of thighs cream-color with brown spots and mottling; groin and dorsal surfaces of first and second toes white; belly cream-colored; glandular areas orange-brown; chest and chin having black spots. Ventral surfaces of hind limbs and first toes cream-colored; undersides of other toes and soles of feet brown.

Color (in life) uniform bright green above; venter pale creamy yellow; anterior and posterior surfaces of thighs, ventral surfaces of shanks, anterior surfaces of tarsi and upper proximal surfaces of first three toes red; iris pale golden color.

The paratype is an adult male, having a snout-vent length of 26.3 mm., and agrees with the holotype in proportions. The ventrolateral glands are less extensive and the chin less spotted than in the holotype.

*Comparisons:* Both *Ptychohyla schmidtorum* and the species described below differ from *P. ignicolor* in lacking red flash-colors and in having a white spot below the eye. *Ptychohyla ignicolor* also differs in having a small tympanum. As stated above, these species can be distinguished from the rest of the genus by the absence of a tarsal fold and absence of horny nuptial spines in breeding males.

*Remarks:* The holotype was found on a moss-covered log over a stream in dense cloud forest by day. The paratype was calling at night from a low herb at the edge of a small stream in the cloud forest. Nearby a *Ptychohyla leonhard-schultzei* was calling.

---

Along two cascading mountain streams in cloud forest on the northern slopes of the Mesa Central in central Chiapas numerous specimens of a distinctive species of *Ptychohyla* were found in association with two species of *Hyla* and two of *Plectrohyla*. The first specimen of this new species of *Ptychohyla* was discovered by Dale L. Hoyt, who found the frog on a rock at midday. At night on August 5, 1960, numerous individuals were found calling from leaves of plants growing on the slopes of the ravine by the streams. None was more than two meters above the ground. Tadpoles were found in the fast-flowing stream, where they were holding onto rocks with their mouths. Little is known of the herpetofauna of these mountains that are the home of the Chamula Indians. Since the little frog described here comes from the land of the Chamulas, I propose that it be named:

### ***Ptychohyla chamulae* new species**

[Pg 354]

(Plate 25, [Fig. 2](#))

*Holotype.*—University of Kansas Museum of Natural History No. 58063, from a stream above (6.2 kilometers by road south) Rayón Mescalapa, Chiapas, México (1690 meters); one of a series collected on August 5, 1960, by William E. Duellman, Dale L. Hoyt, and John Wellman. Original No. WED 17327.

*Paratypes.*—KU Nos. 58064-58073 collected with the holotype.

*Diagnosis.*—A species of the *schmidtorum*-group of *Ptychohyla* differing from other known members of the group in having the following combination of characters: diameter of tympanum not noticeably less than half that of eye; white spot below eye; white lateral stripe on body anteriorly; dorsum bright green in life; thighs yellowish brown.

*Description of Holotype.*—Adult male having snout-vent length of 27.3 mm.; tibia length, 12.8 mm.; tibia length/snout-vent length, 48.7 per cent; foot length (measured from proximal edge of inner metatarsal tubercle to tip of longest toe), 10.8 mm.; head length, 9.2 mm.; head length/snout-vent length, 33.7 per cent; head width, 9.0 mm.; head width/snout-vent length, 30.9 per cent; diameter of eye, 2.8 mm.; diameter of tympanum, 1.4 mm.; tympanum/eye, 50.0 per cent. Snout in lateral profile nearly square, slightly rounded above; in dorsal profile bluntly squared; canthus pronounced; loreal region concave; lips thick, rounded, and flaring; nostrils protuberant; internarial distance, 2.3 mm.; top of head flat; interorbital distance, 3.3 mm.; much broader than width of eyelid, 2.4 mm. A thin dermal fold from posterior corner of eye above tympanum to insertion of forelimb, covering upper edge of tympanum; tympanum nearly round, its diameter equal to its distance from eye. Forearm slender lacking distinct fold on wrist; a row of low, rounded tubercles on ventrolateral surface of forearm; pollex moderately enlarged without nuptial spines; second and fourth fingers equal in length; subarticular tubercles round, none bifid; discs small, that of third finger noticeably smaller than tympanum; no web between first and second fingers; vestige of web between other fingers. Heels overlap when hind limbs adpressed; tibiotarsal articulation reaches to middle of eye; no tarsal fold; inner metatarsal tubercle large, flat, and elliptical; outer metatarsal tubercle slightly more distal than inner, small, and elliptical; subarticular tubercles round; length of digits from shortest to longest 1-2-5-3-4; third and fifth toes webbed to base of disc; fourth toe webbed to base of penultimate phalanx; discs smaller on toes than on fingers. Anal opening directed

posteriorly at upper level of thighs; no anal flap; pair of large tubercles below anal opening and a slightly smaller pair farther below. Skin of dorsum and ventral surfaces of forelimbs and shanks smooth; that of throat, belly, and ventral surfaces of thighs granular. Ventrolateral glands well developed, not reaching axilla or groin and broadly separated midventrally. Skin of anterior part of chin glandular. Tongue cordiform, shallowly notched behind and only slightly free posteriorly; vomerine teeth 2-2, situated on small triangular elevations between large, ovoid inner nares; openings to vocal sac large, one situated along inner posterior edge of each mandibular ramus.

Color (in alcohol) dark purplish brown on dorsal surfaces of head, body, and shanks; thighs brown above and yellowish tan posteriorly; white stripe extending from below eye above forearm to mid-flank. Ventral surfaces creamy white; ventrolateral glands orange-tan flecked with dark brown; edge of lower lip with dark brown spots; narrow white line on upper lip; palms white and soles brown.

[Pg 355]

Color (in life) uniform dark bright green above with creamy white bar below eye; lateral stripe silvery white; ventral surfaces deep yellow; posterior surfaces of thighs yellow brown; iris reddish bronze.

*Variation*.—Sixteen adult males are available; these have snout-vent lengths of 26.3 to 28.5 mm. (average, 27.6 mm.). The tympanum/eye ratio is 48.2 to 58.6 per cent (average, 53.2 per cent). The number of vomerine teeth varies from four to six. The extent of the ventrolateral glands is variable. In five specimens the glands nearly meet midventrally; in two others the glands include the axillary region; in none do the glands extend into the groin. In other structural details there is no noticeable variation.

The greatest variation in color pattern is found in the lateral stripe. The pale spot or bar below the eye is present in all specimens; in one individual there is no lateral stripe; in three the stripe extends posteriorly only to above the forearm, in two to the mid-flank, and in the others to the groin.

Although all of the males were bright uniform green above when collected at night as they were calling, some changed color later. In these individuals the dorsum became a somewhat paler green with faint irregular yellowish tan blotches.

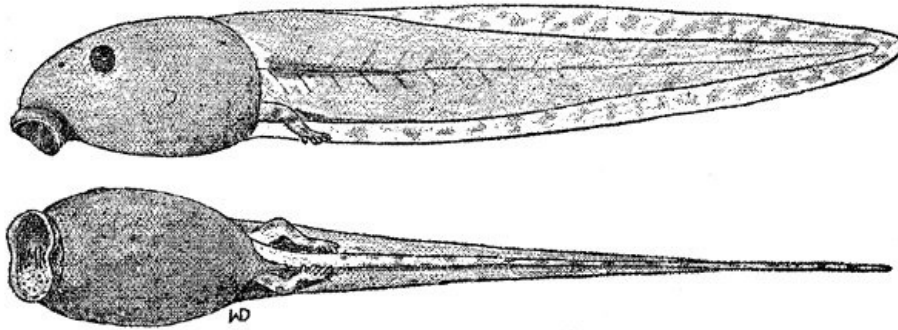
The one available female (UMMZ 121399) has a snout-vent length of 30.3 mm. and a tympanum/eye ratio of 52.8 per cent, and is colored like the males. The tubercles by the anal opening are placed irregularly and do not consist of two pairs below the opening. There are no ventrolateral glands, glandular area on the chin, or enlarged prepollex.

*Comparisons*.—*Ptychohyla chamulae* resembles *P. schmidtorum* in color pattern and body proportions, but the ground color of *schmidtorum* is chocolate brown and not green as in *chamulae*. Also, in *schmidtorum* the webbing and posterior surfaces of the thighs are pale cream-color in preserved specimens as contrasted with tan in *chamulae*. In living *schmidtorum* the iris is bright red, not reddish bronze as in *chamulae*. The ventrolateral glands in *schmidtorum* more closely approximate one another midventrally than in *chamulae*. It is conceivable that these populations are subspecifically related; *schmidtorum* occurs in the same kind of habitat as does *chamulae*, but is known only from the Pacific slopes of southeastern Chiapas and southwestern Guatemala, whereas *chamulae* is known only from the Atlantic slopes of the Mesa Central in north-central Chiapas. Both of these species differ from *Ptychohyla ignicolor* in having a relatively larger tympanum, more webbing on the foot, different arrangement of anal tubercles, and different coloration.

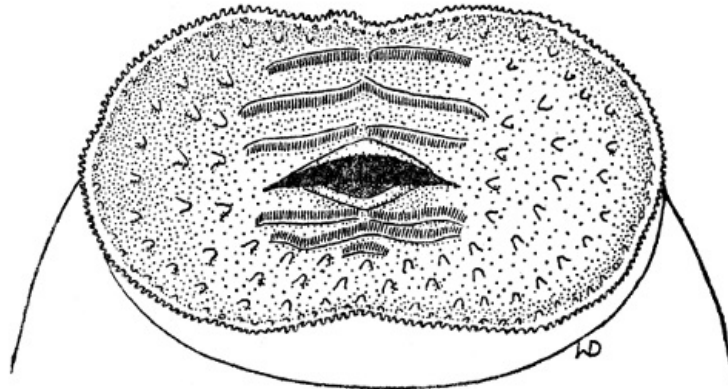
*Description of Tadpole*.—Six tadpoles having fully developed mouth parts have body lengths of 5.5 to 11.9 mm. and total lengths of 17.3 to 44.0 mm. The following description is based on a tadpole (KU 58199) having small hind limbs, a body length of 10.5 mm., and a total length of 39.0 mm. Body ovoid, only slightly flattened dorsally and ventrally ([Fig. 1](#)); body only slightly deeper than wide; eyes directed dorsolaterally and slightly protuberant; nostrils small. Tail long and slender; greatest depth of tail-musculature two-thirds greatest depth of tail-fin; tail-musculature extending nearly to tip of tail-fin.

Mouth directed anteroventrally; thin fleshy lips greatly expanded and forming large suckerlike disc; width of mouth greater than width of snout and nearly as wide as body. Outer edge of lips having small papillae; inner surface of mouth smooth; scattered large papillae, seemingly in rows, around teeth and beak ([Fig. 2](#)). Tooth rows 3/3; the upper rows subequal in length; upper rows one and three interrupted medially; lower rows one and two about equal in length to upper rows; third lower row short. Upper beak heavy and horn-covered.

[Pg 356]



**Fig. 1. Tadpole of *Ptychohyla chamulae* (KU 58199). × 2.5.**



**Fig. 2. Mouthparts of tadpole of *Ptychohyla chamulae* (KU 58199). × 16.**

Color (in alcohol) dark brown over entire body and tail-musculature; a white area near base of tail, and a dark streak on anterior one-fourth of tail; tail-fin transparent having brown blotches.

*Remarks.*—Five metamorphosing tadpoles and juveniles (KU 58074, 58234-8) were found at night on vegetation by streams. Of two completely metamorphosed young each has a snout-vent length of 15.7 mm. Another having a snout-vent length of 16.2 mm. has a tail stub 2 mm. long and a completely metamorphosed mouth. Two others have snout-vent lengths of 13.6 and 14.1 mm. and tail lengths of 11.5 and 8.1 mm. respectively; in these the mouth parts are incompletely metamorphosed. The single female available (UMMZ 121399) contains approximately 60 ovarian eggs, the largest of which are about 2.5 mm. in diameter.

[Pg 357]

*Referred Specimens.*—*Chiapas*: 6.2 km. S of Rayón Mescalapa, KU 58063-74, 58199 (1 tadpole), 58234-8; 5.6 km. S of Rayón Mescalapa, KU 58062, 58200 (5 tadpoles); 11.4 mi. N of Pueblo Nuevo Solistahuacán, UMMZ 121395-9. The specimens listed last were collected along a stream between Pueblo Nuevo Solistahuacán and Rayón Mescalapa, which, according to Floyd L. Downs, is probably the same stream listed above as 5.6 km. S of Rayón Mescalapa.

### Acknowledgments

I take this opportunity to thank Dale L. Hoyt, Thomas E. Moore, and John Wellman, who ably assisted in collecting and studying these frogs in the field. I am indebted to Floyd L. Downs for permission to include specimens collected by him and John Winklemann. My studies on hylid frogs are supported by the National Science Foundation (Grant G 9827).

### LITERATURE CITED

- DUELLMAN, W. E.  
1960. Synonymy, variation, and distribution of *Ptychohyla leonhard-schultzei* Ahl. Studies of American Hylid Frogs. IV. Herpetologica, 16:191-197, September 23.
- STUART, L. C.  
1954. Descriptions of some new amphibians and reptiles from Guatemala. Proc. Biol. Soc. Washington, 67:159-178, August 5.
- TAYLOR, E. H.  
1944. A new genus and species of Mexican hylid frogs. Univ. Kansas Sci. Bull., 30 (pt. 1):41-45, June 12.

---

## Transcriber's Notes

Page [352](#): Rejoined last paragraph, originally split by Plate 25.

Page [355](#): Changed typo "Comaprisons" to "Comparisons."

\*\*\* END OF THE PROJECT GUTENBERG EBOOK DESCRIPTIONS OF TWO SPECIES OF FROGS,  
GENUS PTYCHOHYLA \*\*\*

Updated editions will replace the previous one—the old editions will be renamed.

Creating the works from print editions not protected by U.S. copyright law means that no one owns a United States copyright in these works, so the Foundation (and you!) can copy and distribute it in the United States without permission and without paying copyright royalties. Special rules, set forth in the General Terms of Use part of this license, apply to copying and distributing Project Gutenberg™ electronic works to protect the PROJECT GUTENBERG™ concept and trademark. Project Gutenberg is a registered trademark, and may not be used if you charge for an eBook, except by following the terms of the trademark license, including paying royalties for use of the Project Gutenberg trademark. If you do not charge anything for copies of this eBook, complying with the trademark license is very easy. You may use this eBook for nearly any purpose such as creation of derivative works, reports, performances and research. Project Gutenberg eBooks may be modified and printed and given away—you may do practically ANYTHING in the United States with eBooks not protected by U.S. copyright law. Redistribution is subject to the trademark license, especially commercial redistribution.

### START: FULL LICENSE

#### THE FULL PROJECT GUTENBERG LICENSE

PLEASE READ THIS BEFORE YOU DISTRIBUTE OR USE THIS WORK

To protect the Project Gutenberg™ mission of promoting the free distribution of electronic works, by using or distributing this work (or any other work associated in any way with the phrase "Project Gutenberg"), you agree to comply with all the terms of the Full Project Gutenberg™ License available with this file or online at [www.gutenberg.org/license](http://www.gutenberg.org/license).

### Section 1. General Terms of Use and Redistributing Project Gutenberg™ electronic works

1.A. By reading or using any part of this Project Gutenberg™ electronic work, you indicate that you have read, understand, agree to and accept all the terms of this license and intellectual property (trademark/copyright) agreement. If you do not agree to abide by all the terms of this agreement, you must cease using and return or destroy all copies of Project Gutenberg™ electronic works in your possession. If you paid a fee for obtaining a copy of or access to a Project Gutenberg™ electronic work and you do not agree to be bound by the terms of this agreement, you may obtain a refund from the person or entity to whom you paid the fee as set forth in paragraph 1.E.8.

1.B. "Project Gutenberg" is a registered trademark. It may only be used on or associated in any way with an electronic work by people who agree to be bound by the terms of this agreement. There are a few things that you can do with most Project Gutenberg™ electronic works even without complying with the full terms of this agreement. See paragraph 1.C below. There are a lot of things you can do with Project Gutenberg™ electronic works if you follow the terms of this agreement and help preserve free future access to Project Gutenberg™ electronic works. See paragraph 1.E below.

1.C. The Project Gutenberg Literary Archive Foundation ("the Foundation" or PGLAF), owns a compilation copyright in the collection of Project Gutenberg™ electronic works. Nearly all the individual works in the collection are in the public domain in the United States. If an individual work is unprotected by copyright law in the United States and you are located in the United States, we do not claim a right to prevent you from copying, distributing, performing, displaying or creating derivative works based on the work as long as all references to Project Gutenberg are removed. Of course, we hope that you will support the Project Gutenberg™ mission of promoting free access to electronic works by freely sharing Project Gutenberg™ works in compliance with the terms of this agreement for keeping the Project Gutenberg™ name associated with the work. You can easily comply with the terms of this agreement by keeping this work in the same format with its attached full Project Gutenberg™ License when you share it without charge with others.

1.D. The copyright laws of the place where you are located also govern what you can do with this work. Copyright laws in most countries are in a constant state of change. If you are outside the United States, check the laws of your country in addition to the terms of this agreement before

downloading, copying, displaying, performing, distributing or creating derivative works based on this work or any other Project Gutenberg™ work. The Foundation makes no representations concerning the copyright status of any work in any country other than the United States.

1.E. Unless you have removed all references to Project Gutenberg:

1.E.1. The following sentence, with active links to, or other immediate access to, the full Project Gutenberg™ License must appear prominently whenever any copy of a Project Gutenberg™ work (any work on which the phrase “Project Gutenberg” appears, or with which the phrase “Project Gutenberg” is associated) is accessed, displayed, performed, viewed, copied or distributed:

This eBook is for the use of anyone anywhere in the United States and most other parts of the world at no cost and with almost no restrictions whatsoever. You may copy it, give it away or re-use it under the terms of the Project Gutenberg License included with this eBook or online at [www.gutenberg.org](http://www.gutenberg.org). If you are not located in the United States, you will have to check the laws of the country where you are located before using this eBook.

1.E.2. If an individual Project Gutenberg™ electronic work is derived from texts not protected by U.S. copyright law (does not contain a notice indicating that it is posted with permission of the copyright holder), the work can be copied and distributed to anyone in the United States without paying any fees or charges. If you are redistributing or providing access to a work with the phrase “Project Gutenberg” associated with or appearing on the work, you must comply either with the requirements of paragraphs 1.E.1 through 1.E.7 or obtain permission for the use of the work and the Project Gutenberg™ trademark as set forth in paragraphs 1.E.8 or 1.E.9.

1.E.3. If an individual Project Gutenberg™ electronic work is posted with the permission of the copyright holder, your use and distribution must comply with both paragraphs 1.E.1 through 1.E.7 and any additional terms imposed by the copyright holder. Additional terms will be linked to the Project Gutenberg™ License for all works posted with the permission of the copyright holder found at the beginning of this work.

1.E.4. Do not unlink or detach or remove the full Project Gutenberg™ License terms from this work, or any files containing a part of this work or any other work associated with Project Gutenberg™.

1.E.5. Do not copy, display, perform, distribute or redistribute this electronic work, or any part of this electronic work, without prominently displaying the sentence set forth in paragraph 1.E.1 with active links or immediate access to the full terms of the Project Gutenberg™ License.

1.E.6. You may convert to and distribute this work in any binary, compressed, marked up, nonproprietary or proprietary form, including any word processing or hypertext form. However, if you provide access to or distribute copies of a Project Gutenberg™ work in a format other than “Plain Vanilla ASCII” or other format used in the official version posted on the official Project Gutenberg™ website ([www.gutenberg.org](http://www.gutenberg.org)), you must, at no additional cost, fee or expense to the user, provide a copy, a means of exporting a copy, or a means of obtaining a copy upon request, of the work in its original “Plain Vanilla ASCII” or other form. Any alternate format must include the full Project Gutenberg™ License as specified in paragraph 1.E.1.

1.E.7. Do not charge a fee for access to, viewing, displaying, performing, copying or distributing any Project Gutenberg™ works unless you comply with paragraph 1.E.8 or 1.E.9.

1.E.8. You may charge a reasonable fee for copies of or providing access to or distributing Project Gutenberg™ electronic works provided that:

- You pay a royalty fee of 20% of the gross profits you derive from the use of Project Gutenberg™ works calculated using the method you already use to calculate your applicable taxes. The fee is owed to the owner of the Project Gutenberg™ trademark, but he has agreed to donate royalties under this paragraph to the Project Gutenberg Literary Archive Foundation. Royalty payments must be paid within 60 days following each date on which you prepare (or are legally required to prepare) your periodic tax returns. Royalty payments should be clearly marked as such and sent to the Project Gutenberg Literary Archive Foundation at the address specified in Section 4, “Information about donations to the Project Gutenberg Literary Archive Foundation.”
- You provide a full refund of any money paid by a user who notifies you in writing (or by e-mail) within 30 days of receipt that s/he does not agree to the terms of the full Project Gutenberg™ License. You must require such a user to return or destroy all copies of the works possessed in a physical medium and discontinue all use of and all access to other copies of Project Gutenberg™ works.
- You provide, in accordance with paragraph 1.F.3, a full refund of any money paid for a work or a replacement copy, if a defect in the electronic work is discovered and reported to you within 90 days of receipt of the work.
- You comply with all other terms of this agreement for free distribution of Project Gutenberg™ works.

1.E.9. If you wish to charge a fee or distribute a Project Gutenberg™ electronic work or group of works on different terms than are set forth in this agreement, you must obtain permission in



writing from the Project Gutenberg Literary Archive Foundation, the manager of the Project Gutenberg™ trademark. Contact the Foundation as set forth in Section 3 below.

#### 1.F.

1.F.1. Project Gutenberg volunteers and employees expend considerable effort to identify, do copyright research on, transcribe and proofread works not protected by U.S. copyright law in creating the Project Gutenberg™ collection. Despite these efforts, Project Gutenberg™ electronic works, and the medium on which they may be stored, may contain “Defects,” such as, but not limited to, incomplete, inaccurate or corrupt data, transcription errors, a copyright or other intellectual property infringement, a defective or damaged disk or other medium, a computer virus, or computer codes that damage or cannot be read by your equipment.

1.F.2. LIMITED WARRANTY, DISCLAIMER OF DAMAGES - Except for the “Right of Replacement or Refund” described in paragraph 1.F.3, the Project Gutenberg Literary Archive Foundation, the owner of the Project Gutenberg™ trademark, and any other party distributing a Project Gutenberg™ electronic work under this agreement, disclaim all liability to you for damages, costs and expenses, including legal fees. YOU AGREE THAT YOU HAVE NO REMEDIES FOR NEGLIGENCE, STRICT LIABILITY, BREACH OF WARRANTY OR BREACH OF CONTRACT EXCEPT THOSE PROVIDED IN PARAGRAPH 1.F.3. YOU AGREE THAT THE FOUNDATION, THE TRADEMARK OWNER, AND ANY DISTRIBUTOR UNDER THIS AGREEMENT WILL NOT BE LIABLE TO YOU FOR ACTUAL, DIRECT, INDIRECT, CONSEQUENTIAL, PUNITIVE OR INCIDENTAL DAMAGES EVEN IF YOU GIVE NOTICE OF THE POSSIBILITY OF SUCH DAMAGE.

1.F.3. LIMITED RIGHT OF REPLACEMENT OR REFUND - If you discover a defect in this electronic work within 90 days of receiving it, you can receive a refund of the money (if any) you paid for it by sending a written explanation to the person you received the work from. If you received the work on a physical medium, you must return the medium with your written explanation. The person or entity that provided you with the defective work may elect to provide a replacement copy in lieu of a refund. If you received the work electronically, the person or entity providing it to you may choose to give you a second opportunity to receive the work electronically in lieu of a refund. If the second copy is also defective, you may demand a refund in writing without further opportunities to fix the problem.

1.F.4. Except for the limited right of replacement or refund set forth in paragraph 1.F.3, this work is provided to you ‘AS-IS’, WITH NO OTHER WARRANTIES OF ANY KIND, EXPRESS OR IMPLIED, INCLUDING BUT NOT LIMITED TO WARRANTIES OF MERCHANTABILITY OR FITNESS FOR ANY PURPOSE.

1.F.5. Some states do not allow disclaimers of certain implied warranties or the exclusion or limitation of certain types of damages. If any disclaimer or limitation set forth in this agreement violates the law of the state applicable to this agreement, the agreement shall be interpreted to make the maximum disclaimer or limitation permitted by the applicable state law. The invalidity or unenforceability of any provision of this agreement shall not void the remaining provisions.

1.F.6. INDEMNITY - You agree to indemnify and hold the Foundation, the trademark owner, any agent or employee of the Foundation, anyone providing copies of Project Gutenberg™ electronic works in accordance with this agreement, and any volunteers associated with the production, promotion and distribution of Project Gutenberg™ electronic works, harmless from all liability, costs and expenses, including legal fees, that arise directly or indirectly from any of the following which you do or cause to occur: (a) distribution of this or any Project Gutenberg™ work, (b) alteration, modification, or additions or deletions to any Project Gutenberg™ work, and (c) any Defect you cause.

## **Section 2. Information about the Mission of Project Gutenberg™**

Project Gutenberg™ is synonymous with the free distribution of electronic works in formats readable by the widest variety of computers including obsolete, old, middle-aged and new computers. It exists because of the efforts of hundreds of volunteers and donations from people in all walks of life.

Volunteers and financial support to provide volunteers with the assistance they need are critical to reaching Project Gutenberg™’s goals and ensuring that the Project Gutenberg™ collection will remain freely available for generations to come. In 2001, the Project Gutenberg Literary Archive Foundation was created to provide a secure and permanent future for Project Gutenberg™ and future generations. To learn more about the Project Gutenberg Literary Archive Foundation and how your efforts and donations can help, see Sections 3 and 4 and the Foundation information page at [www.gutenberg.org](http://www.gutenberg.org).

## **Section 3. Information about the Project Gutenberg Literary Archive Foundation**

The Project Gutenberg Literary Archive Foundation is a non-profit 501(c)(3) educational corporation organized under the laws of the state of Mississippi and granted tax exempt status by the Internal Revenue Service. The Foundation’s EIN or federal tax identification number is 64-

6221541. Contributions to the Project Gutenberg Literary Archive Foundation are tax deductible to the full extent permitted by U.S. federal laws and your state's laws.

The Foundation's business office is located at 809 North 1500 West, Salt Lake City, UT 84116, (801) 596-1887. Email contact links and up to date contact information can be found at the Foundation's website and official page at [www.gutenberg.org/contact](http://www.gutenberg.org/contact)

#### **Section 4. Information about Donations to the Project Gutenberg Literary Archive Foundation**

Project Gutenberg™ depends upon and cannot survive without widespread public support and donations to carry out its mission of increasing the number of public domain and licensed works that can be freely distributed in machine-readable form accessible by the widest array of equipment including outdated equipment. Many small donations (\$1 to \$5,000) are particularly important to maintaining tax exempt status with the IRS.

The Foundation is committed to complying with the laws regulating charities and charitable donations in all 50 states of the United States. Compliance requirements are not uniform and it takes a considerable effort, much paperwork and many fees to meet and keep up with these requirements. We do not solicit donations in locations where we have not received written confirmation of compliance. To SEND DONATIONS or determine the status of compliance for any particular state visit [www.gutenberg.org/donate](http://www.gutenberg.org/donate).

While we cannot and do not solicit contributions from states where we have not met the solicitation requirements, we know of no prohibition against accepting unsolicited donations from donors in such states who approach us with offers to donate.

International donations are gratefully accepted, but we cannot make any statements concerning tax treatment of donations received from outside the United States. U.S. laws alone swamp our small staff.

Please check the Project Gutenberg web pages for current donation methods and addresses. Donations are accepted in a number of other ways including checks, online payments and credit card donations. To donate, please visit: [www.gutenberg.org/donate](http://www.gutenberg.org/donate)

#### **Section 5. General Information About Project Gutenberg™ electronic works**

Professor Michael S. Hart was the originator of the Project Gutenberg™ concept of a library of electronic works that could be freely shared with anyone. For forty years, he produced and distributed Project Gutenberg™ eBooks with only a loose network of volunteer support.

Project Gutenberg™ eBooks are often created from several printed editions, all of which are confirmed as not protected by copyright in the U.S. unless a copyright notice is included. Thus, we do not necessarily keep eBooks in compliance with any particular paper edition.

Most people start at our website which has the main PG search facility: [www.gutenberg.org](http://www.gutenberg.org).

This website includes information about Project Gutenberg™, including how to make donations to the Project Gutenberg Literary Archive Foundation, how to help produce our new eBooks, and how to subscribe to our email newsletter to hear about new eBooks.