

The Project Gutenberg eBook of A Distributional Study of the Amphibians of the Isthmus of Tehuantepec, México, by William Edward Duellman

This ebook is for the use of anyone anywhere in the United States and most other parts of the world at no cost and with almost no restrictions whatsoever. You may copy it, give it away or re-use it under the terms of the Project Gutenberg License included with this ebook or online at www.gutenberg.org. If you are not located in the United States, you'll have to check the laws of the country where you are located before using this eBook.

Title: A Distributional Study of the Amphibians of the Isthmus of Tehuantepec, México

Author: William Edward Duellman

Release date: December 30, 2011 [EBook #38440]

Language: English

Credits: Produced by Chris Curnow, Joseph Cooper, Diane Monico, and the Online Distributed Proofreading Team at <http://www.pgdp.net>

*** START OF THE PROJECT GUTENBERG EBOOK A DISTRIBUTIONAL STUDY OF THE AMPHIBIANS OF THE ISTHMUS OF TEHUANTEPEC, MÉXICO ***

UNIVERSITY OF KANSAS PUBLICATIONS
MUSEUM OF NATURAL HISTORY

Volume 13, No. 2, pp. 19-72, pls. 1-8, 3 figs.
August 16, 1960

A Distributional Study of the Amphibians of the Isthmus of Tehuantepec, México

BY
WILLIAM E. DUELLMAN

UNIVERSITY OF KANSAS
LAWRENCE
1960

UNIVERSITY OF KANSAS PUBLICATIONS
MUSEUM OF NATURAL HISTORY

Volume 13, No. 2, pp. 19-72, pls. 1-8, 3 figs.
August 16, 1960

A Distributional Study of the Amphibians of the Isthmus of Tehuantepec, México

BY
WILLIAM E. DUELLMAN

UNIVERSITY OF KANSAS
LAWRENCE
1960

**Editors: E. Raymond Hall, Chairman, Henry S. Fitch,
Robert W. Wilson**

**Volume 13, No. 2, pp. 19-72, pls. 1-8, 3 figs.
Published August 16, 1960**

**UNIVERSITY OF KANSAS
Lawrence, Kansas**

**PRINTED IN
THE STATE PRINTING PLANT
TOPEKA, KANSAS
1960**

28-3859

A Distributional Study of the Amphibians of the Isthmus of Tehuantepec, México

[Pg 21]

BY

WILLIAM E. DUELLMAN

CONTENTS

	PAGE
INTRODUCTION	21
Acknowledgments	23
Field Studies in the Isthmus of Tehuantepec	23
Sources of Material	24
DESCRIPTION OF THE ISTHMUS OF TEHUANTEPEC	25
Physiography	25
Climate	28
Vegetation	29
The Sierra de los Tuxtlas	32
GAZETTEER	33
THE AMPHIBIAN FAUNA OF THE LOWLANDS	37
Composition of the Fauna	37
Ecology of the Fauna	38
Distribution of the Fauna	42
THE AMPHIBIAN FAUNA OF THE FOOTHILLS AND ADJACENT HIGHLANDS	44
ESTABLISHMENT OF PRESENT PATTERNS OF DISTRIBUTION	45
ACCOUNTS OF SPECIES	49
SUMMARY	68
LITERATURE CITED	69

INTRODUCTION

Few regions in Middle America are so important zoogeographically as is the Isthmus of Tehuantepec, that neck of land connecting North America with Central America, separating the Pacific Ocean from the Gulf of Mexico by a distance of only about 220 kilometers (airline), and forming a low break between the highlands of México and those of Central America. Before World War II the isthmus could be reached readily only by railroad or by ocean vessel to Salina Cruz or Coatzacoalcos. With the advent of roads, principally the Trans-isthmian Highway, vast areas of the interior of the isthmus became accessible to biologists. Nevertheless, long before roads were built in the isthmian region collectors and biologists visited it, especially the town of Tehuantepec, from which collections date back to the 1870's. Therefore, it is rather surprising that no attempt has been made to present a faunal list of the amphibians or reptiles of the isthmus. Ruthven (1912) summarized his collections from the vicinity of Cuatotolapam, Veracruz, and Hartweg and Oliver (1940) presented an annotated list of the species collected by them in the vicinity of Tehuantepec. In recent years there have been only a few papers reporting species from the isthmus (Fugler and Webb, 1957; Langebartel and Smith, 1959). The zoogeographic significance of the Isthmus of Tehuantepec is exemplified by the works of Burt (1931), Duellman (1958), Gloyd (1940), Oliver (1948), and Stuart (1941), who in their discussions of evolution and

[Pg 22]

dispersal of various genera of reptiles, pointed out that the Isthmus of Tehuantepec was a region of zoogeographic importance.

Originally I intended to study the entire herpetofauna of the isthmus. But I have not had opportunity to study all of the reptiles, and I have not had the inclination to solve certain taxonomic problems concerning them. The amphibians that I collected, together with all other known specimens in museums, have been studied. Therefore, the present report is concerned only with the amphibians. Only the amphibians of the lowlands of the isthmus have been sampled adequately. Although I have commented on the highland species in the discussion of distribution, they are not included in the systematic section, which deals solely with the 36 species definitely known to occur in the lowlands of the isthmus.

Among the species of amphibians that I would expect to occur in the isthmus, the only one not yet found there is *Hyla phaeota*. Sufficient specimens of most of the species are available to show their variation in the isthmus. Consequently, the systematics of these amphibians is on a fairly substantial basis. Probably certain species in the isthmian region will be found to be conspecific with others to the south, for example *Hyla ebraccata* with *Hyla leucophyllata* and *Hyla robertmertensi* with *Hyla underwoodi*. Nevertheless, such taxonomic changes will not affect the distributional picture presented here. Our greatest lack of knowledge concerning the amphibians is about their life histories, as may be illustrated by the following questions, all of which now are without definite answers. Where do many of the small frogs conceal themselves during the dry season? What amount of, if any, interspecific competition exists among several species of tree frogs, all of which breed in the same ponds? What factors in the environment permit certain amphibians, but not others, to live in the humid rainforests, as well as in the arid tropical scrub forest? The answers to these questions and many others must await additional field studies.

[Pg 23]

The purpose of this paper is to make known the species of amphibians living in the Isthmus of Tehuantepec, to describe the environments in which they live, and to discuss their distribution in the isthmus. With respect to the distribution of animals in the Isthmus of Tehuantepec I will attempt to explain the present patterns of distribution with special reference to climatic fluctuation in the Pleistocene.

Acknowledgments

My extensive field work in the Isthmus of Tehuantepec was made possible by grants from the Penrose Fund of the American Philosophical Society (1956) and the Bache Fund of the National Academy of Sciences (1958). Furthermore, my field work received the hearty support of the Museum of Zoology at the University of Michigan; for their cooperation I am indebted to Norman Hartweg, T. H. Hubbell, and Henry van der Schalie. In the course of my studies I received helpful suggestions from Norman Hartweg, L. C. Stuart, and Charles F. Walker, to whom I am grateful. For permission to examine specimens in their care I thank Doris M. Cochran, Hobart M. Smith, and Richard G. Zweifel. I am deeply indebted to Thomas MacDougall for many suggestions and for aid in preparing the gazetteer. I am most grateful for the efforts of my field companions, Richard E. Etheridge, Jerome B. Tulecke, John Wellman, and especially my wife, Ann S. Duellman, who spent many long days and nights gathering much of the data on which this report is based. Our work in the isthmus was furthered by the generous help and hospitality of many residents, especially the late Wilbur Barker of Tehuantepec, Fortunado Delgado of Rancho Las Hojitas near Acayucan, César Fárjas of Donají, and Juan Mayol of San Andrés Tuxtla. Profesor Jordi Juliá Z. of the Laboratorio de Entomología, Comisión del Papaloapan, Ciudad Alemán, Veracruz, helped make possible my field work in 1959; for this he has my sincere thanks. In conclusion I express my gratitude to Ing. Juan Lozano Franco, Secretaria de Agricultura y Ganadería, for providing me with the necessary permits.

Field Studies in the Isthmus of Tehuantepec

I first visited the Isthmus of Tehuantepec and collected on the Pacific lowlands of the isthmus in July, 1955. At that time heavy rains and impassable roads restricted travelling. In February and March of 1956 my wife and I concentrated our efforts in the central region between the Río Jaltepec and Matías Romero, but also made several trips across the isthmus to gather ecological data in the dry season. In July of the same year, accompanied by Richard E. Etheridge, we again crossed the isthmus several times in order to gather ecological data in the wet season, and studied especially hylid frogs, most of which had not been seen in the dry season. Accompanied by Jerome B. Tulecke and John Wellman, I collected again in the isthmus in July, 1958, between Salina Cruz and Tehuantepec, and between Coatzacoalcos and Cosoleacaque. In March and April, 1959, I collected at Ciudad Alemán. Nearly 1200 specimens of 30 species of amphibians were thus collected in the Isthmus of Tehuantepec; all specimens are now in the Museum of Zoology at the University of Michigan. Of other species known from the isthmus, I have had field experience with all but one (*Bolitoglossa veracruzis*) in other parts of México.

[Pg 24]

Sources of Material

There are in museum collections nearly 3000 specimens of amphibians with reliable data from the Isthmus of Tehuantepec. Among the first herpetological specimens collected in the isthmian region are those assembled by Francis Sumichrast in the 1870's from the vicinity of Santa Efigenia and Tapanatepec, Oaxaca. These specimens were sent to the United States National

Museum and the Museum National d'Histoire Naturelle in Paris; many served as the types of new species: *Bufo canaliferus* Cope, *Eleutherodactylus rugulosus* Cope, *Syrrophus leprus* Cope, and *Hylella sumichrasti* Brocchi. In 1911 Alexander G. Ruthven collected in the savanna country near Cuatotolapam, Veracruz; the report on his collections (1912) is the first dealing with the herpetofauna of a part of the isthmus. His specimens are in the collection of the University of Michigan Museum of Zoology. Norman Hartweg and James A. Oliver collected for the University of Michigan Museum of Zoology in the vicinity of Tehuantepec, Oaxaca, during the summer of 1936. The results of their work were published as an annotated list of species occurring on the Pacific slopes of the isthmus (1940). Hobart M. Smith collected in the vicinity of Tehuantepec in January, 1940; his specimens are in the United States National Museum. Specimens collected by Smith served as the types of *Eleutherodactylus avocalis* Taylor and Smith and *Diaglena reticulata* Taylor. Walter W. Dalquest collected vertebrates for the University of Kansas in southern Veracruz in the winters of 1947 and 1948; he spent about six months on the Gulf lowlands of the isthmus, principally in the vicinity of Jesús Carranza. For the past two decades Thomas MacDougall, a resident of New York City, has spent his winters collecting biological specimens in southern México. He makes his headquarters at Tehuantepec, but his compulsion to see the "back country" has taken him to many remote parts of southern Oaxaca. His earlier collections are in the American Museum of Natural History; the later ones are in the University of Illinois Museum of Natural History.

Minor collections include those made by Matthew W. Stirling at San Lorenzo, Veracruz, February-April, 1946 (United States National Museum), by Fred G. Thompson on a trip across the isthmus in December, 1955 (University of Michigan Museum of Zoology), by the University of Kansas Museum of Natural History field party under the direction of Rollin H. Baker at Tolosita, Oaxaca, and by David A. Langebartel and associates from southern Oaxaca in June, 1958 (University of Illinois Museum of Natural History).

In the collections of the United States National Museum are several species of amphibians sent to the museum from Tehuantepec by Francis Sumichrast. These include *Bolitoglossa platydactyla* (USNM 30305, 30344-6, 30528), *Bolitoglossa rufescens* (10042), *Chiropetrotriton chiropetrus* (30347), *Lineatriton lineola* (30353), *Parvimolge townsendi* (30352), *Pseudoeurycea cephalica* (30350), *Thorius pennatulus* (30348-9), *Hyla miotypanum* (30302-3), and *Hyla picta* (30304). Because of the poor condition of the specimens, determinations of those listed as *Bolitoglossa rufescens* and *Pseudoeurycea cephalica* are uncertain. With the exception of the *Bolitoglossa rufescens*, which is stated to have come from Santa Efigenia, all of these specimens are catalogued as having come from Tehuantepec. None of these species has since been recorded from the Pacific slopes of the isthmus; however, they all occur in the vicinity of Orizaba, Veracruz. Probably Sumichrast carried the specimens with him from Orizaba, his home before moving to Santa Efigenia, and shipped them from Tehuantepec to the United States National Museum. These species definitely should not be considered as inhabitants of the Pacific slopes of the Isthmus of Tehuantepec.

[Pg 25]

DESCRIPTION OF THE ISTHMUS OF TEHUANTEPEC

The Isthmus of Tehuantepec is a strip of land forming a low pass, which separates the mountain masses of México proper from those of Central America, and at the same time provides a continuum of lowlands from the Gulf of Mexico to the Pacific Ocean. This topography combines with the climatic conditions to create extremely diverse environments, the distribution of which can be adequately understood only after an acquaintance with the topography and climate of the region.

Physiography

In east-central Oaxaca the mountain masses comprising the Sierra Madre Oriental and the Sierra del Sur terminate in a series of ranges—Sierra de Juárez, Sierra de los Míjes, and Sierra de Choapam. From lofty peaks, such as Cerro de Zempoaltepetl (3400 meters), the highlands diminish eastward to succeeding lower ridges, until in the middle of the Isthmus of Tehuantepec the continental divide is about 250 meters above sea level. Eastward from this low divide the land rises to form the Sierra Madre de Chiapas, which is continuous with the highland masses of Guatemala.

For the purposes of this description, the lowlands of the isthmus may be divided into three parts—the Gulf Coastal Plain, the central ridges, and the Pacific Coastal Plain, which in the isthmus is called the Plains of Tehuantepec ([Figs. 1](#) and [2](#)).

The Gulf Coastal Plain is broad and fairly level near the coast, but rolling in the interior. The plain, throughout most of its length in the isthmus, is at least 75 kilometers wide. The majority of the region in the isthmus is drained by the Río Coatzacoalcos, which flows in a northerly course to the Gulf of Mexico. The western part is drained by the Río San Juan, the principal tributary of the Río Papaloapan. Behind the coastal dunes are frequent, and sometimes large, lagoons. Immediately inland from Coatzacoalcos and along the lower stretches of the Río Papaloapan are extensive marshes. Essentially the entire coastal plain, with the exception of the coastal dunes, consists of rich alluvial deposits.

[Pg 26]

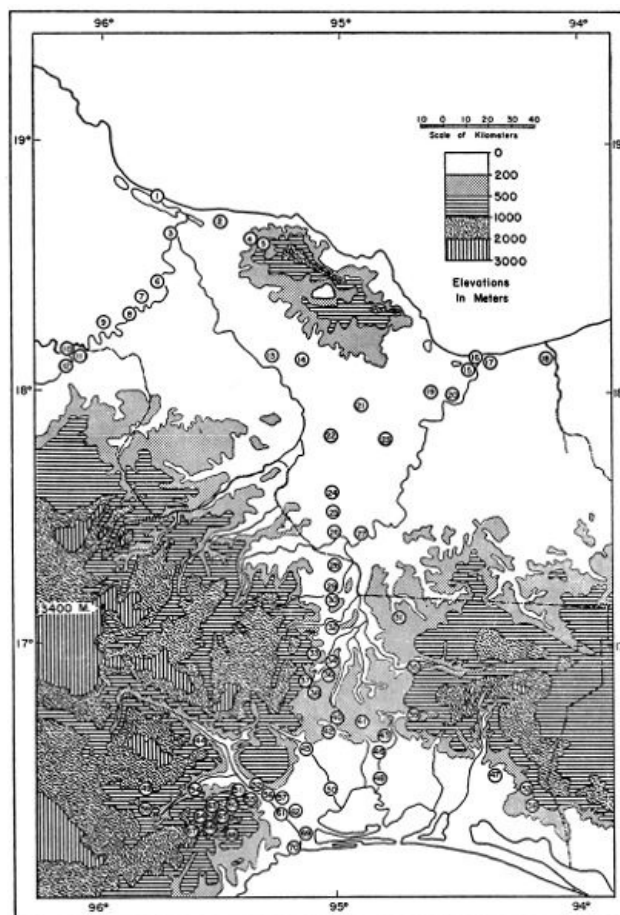


FIG. 1. Map of the Isthmus of Tehuantepec based on the American Geographical Society's "Map of Hispanic America on the Scale of 1:1,000,000."

(Click image for larger view.)

The localities shown are numbered in the gazetteer; the numerical sequence of localities is an arrangement whereby north takes precedence over south and west over east. 1. Alvarado. 2. Lerdo de Tejada. 3.

Tlacotalpan. 4. Tula. 5. Tecolapan. 6.

Amatitlán. 7. Cosamaloapan. 8.

Chacaltianguis. 9. Novillero. 10. Ciudad Alemán. 11. Papaloapan. 12. Tuxtepec. 13. Cuatrotolapam. 14. Hueyapan. 15. Berta. 16.

Coatzacoalcos. 17. Ayentes. 18. Río de las Playas. 19. Cosoleacaque. 20. Minatitlán. 21.

Acayucan. 22. Aquilera. 23. San Lorenzo. 24. Naranja. 25. Suchil. 26. Jesús Carranza. 27.

La Oaxaqueña. 28. Ubero. 29. Donají. 30.

Tolosita. 31. El Modelo. 32. Sarabia, 33.

Guichicovi. 34. La Princesa. 35. Santa María Chimalapa. 36. Matías Romero. 37. Santo Domingo Petapa. 38. El Barrio. 39. Palmar.

40. Chivela. 41. Santiago Chivela. 42.

Nizanda. 43. Agua Caliente. 44. Portillo Los Nanches. 45. Ixtepec. 46. La Ventosa. 47.

Zanatepec. 48. Unión Hidalgo. 49. Tres

Cruces. 50. Juchitán. 51. Ecurano. 52.

Salazar. 53. Santa Efigenia. 54. Tequisistlán.

55. Cerro de Quiengola. 56. San Pablo. 57.

Mixtequilla. 58. Tapanatepec. 59. Zarzamora.

60. Limón. 61. Tehuantepec. 62. Bisilana. 63.

Santa Lucía. 64. Cerro de Arenal. 65. Cerro de San Pedro. 66. La Concepción. 67. Tenango.

68. San Antonio. 69. Huilotepec. 70. Salina Cruz.

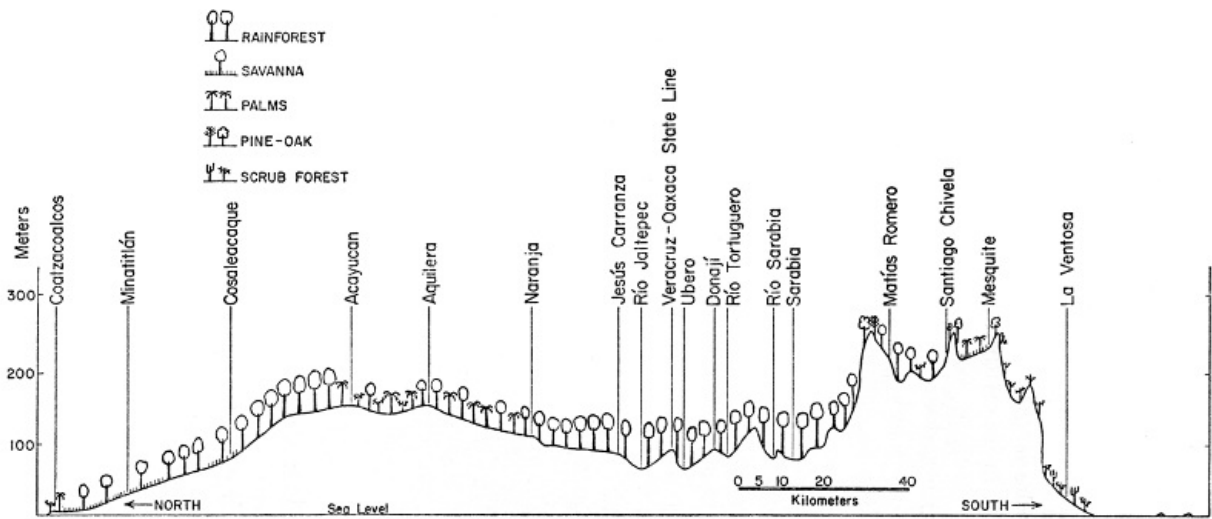


FIG. 2. Topographic profile of the Isthmus of Tehuantepec showing major localities along the Trans-isthmian Highway and major types of vegetation. Vertical exaggeration approximately 165 times.

The central ridges extend from the Río Jaltepec southward to within 40 kilometers of the Pacific coast. It is in this area that the continuity of the high ridges and volcanic peaks, which extend nearly the entire length of the Americas, is interrupted at a point almost directly in line with the shortest distance between the two oceans. The northern part of this central region consists of hills dissected by tributaries of the Río Coatzacoalcos; the principal ones from north to south are —Río Jaltepec, Río Tortuguero, Río Sarabia, and Río Malatengo. The plains of Chivela are south of these rivers and lie at an elevation of about 200 meters; at the southern edge of these plains a range of hills rises to 250 to 400 meters above sea level. These hills drop abruptly to the Plains of Tehuantepec. In the northern and central parts of this central region the rocks are granitic; the hills to the south of the Plains of Chivela are limestone.

[Pg 28]

The Pacific Coastal Plain or Plains of Tehuantepec have a maximum width of about 30 kilometers. From the base of the hills at an elevation of about 75 meters the plains slope gradually to the sea. To the west of the Río Tehuantepec and to the east of the Plains of Tehuantepec at the base of the Sierra Madre de Chiapas, the coastal plain becomes much narrower; in these places the continuity of the plain is frequently interrupted by low north-south ridges extending outward from the mountains or by isolated hills. The soil is poor, varying from volcanic rock to gravel and sand.

Climate

The prevailing winds are from the north across the Gulf of Mexico. These moisture-laden winds precipitate most of their moisture north of the central ridges. This results in high rainfall on the northern slopes and Gulf Coastal Plain and relatively little rainfall on the southern slopes and the Pacific Coastal Plain. Precipitation is cyclic; there is a marked wet and a dry season throughout the region, but this is most noticeable on the Pacific lowlands (Fig. 3). At Salina Cruz on the Pacific Ocean the average annual rainfall is 1040 mm. (Contreras, 1942); of this amount, only 15 mm. falls from November through April. On the Gulf Coastal Plain (Minatitlán station) the average annual rainfall is 3085 mm. In this region the driest months are February through May, during which time 236 mm. of rain falls. At Salina Cruz the wettest month is June; at Minatitlán it is September. There is little variation in temperature throughout the isthmus; the average annual temperature at Salina Cruz is 26.6° C.; that at Minatitlán is 26.2° C. During the winter when masses of air from the arctic move southward into the Great Plains of the United States, cool winds blow across the isthmus. These are usually accompanied by overcast sky and sometimes a slight amount of precipitation. These "nortes" may cause a drop in temperature of about six to eight degrees in a few hours.

[Pg 29]

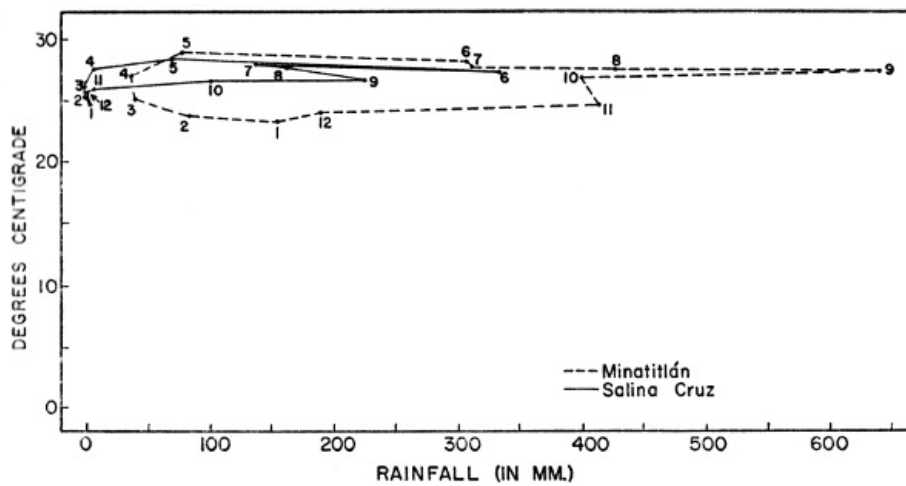


FIG. 3. Climatographs for Minatitlán, Veracruz, and Salina Cruz, Oaxaca, based on data given by Contreras (1942). Plotted points are for mean monthly temperatures and rainfall; months are indicated by numbers.

Vegetation

The topography and climate combine to produce drastically different types of climax vegetation on the northern and southern lowlands of the isthmus. The picture is somewhat complicated by the savannas on the Gulf Coastal Plain, which, as will be shown later, are dependent upon edaphic features more than climatic conditions. The following brief account of the vegetation in the Isthmus of Tehuantepec is based on data provided by Williams (1939) and Goldman (1951), supplemented by personal observations. The purpose of this description is not to analyze the flora of the isthmus, but to give the reader a picture of this aspect of the biota of the major environments with which I shall be concerned in the ensuing discourse on the amphibians of the region. The three divisions of the isthmus recognized in the account of the physiography serve equally well in describing the vegetation. Those divisions are as follows:

[Pg 30]

Gulf Lowlands

On the lowlands north of the continental divide and extending to the Gulf of Mexico are three major types of vegetation—tropical rainforest, arid tropical scrub forest, and savanna. Aside from these, there are marshes and lagoons near the coast.

On the coastal dunes there are thickets of sea grape, patches of *Cenchrus*, and clumps or scattered *Opuntia*. The lagoons are bordered by mangrove thickets made up primarily of *Lonchocarpus hondurensis*. In the marshes along the lower Río Coatzacoalcos and Río Papaloapan the tall tough grass, *Gynerium sagittatum*, is common.

According to Beard (1953: 291) the development of savanna vegetation is dependent upon soil, topography, and drainage. Level regions having permeable soil horizons lying on top of an impermeable horizon provide poor drainage. In most savanna regions in the Americas the grasslands become waterlogged or even partly flooded during the rainy season and desiccated in the dry season. Many ecologists and phytogeographers have postulated that savannas are either man made or are examples of a fire climax. Beard (*op. cit.*: 203) provided multitudinous evidence that the association of savanna vegetation and certain types of edaphic and topographic conditions was so strongly marked that grassland is the natural vegetation in these areas.

Savannas are scattered through southern Veracruz eastward to British Honduras. These usually are grasslands having scattered trees or clumps of trees around depressions, which may contain water throughout the year ([Pl. 1, fig. 1](#)). According to Williams (*op. cit.*), the most common trees in the savannas in southern Veracruz are *Ceiba pentandra*, *Chlorophora tinctoria*, and *Byrsonima crassifolia*.

Lying in a rain shadow cast by the Tuxtlas and on sandy and well-drained soils is a dense xerophytic forest. The crown of this deciduous forest usually is little more than ten to twelve meters above the ground ([Pl. 1, fig. 2](#)). Conspicuous trees in this scrub forest are *Acacia cornigera*, *Bauhinia latifolia*, *Calliandra bijuga*, *Cassia laevigata*, *Guazuma ulmifolia*, and various species of *Bursera*.

The most extensive type of vegetation on the Gulf Coastal Plain is a tall evergreen forest resembling tropical rainforest. Although this forest is made up of many species of trees that are characteristic of true rainforest, the forest on the Gulf Coastal Plain cannot be classified as true rainforest, neither by the climatic conditions, nor the structure of the forest. The seasonal variation in rainfall probably is the chief factor in hindering the development of a rainforest climax vegetation. Usually a minimum of 65 mm. of rainfall each month is considered essential for the development of true rainforest. At Minatitlán the average rainfall for March (39 mm.) and April (36 mm.) is far below this minimum. Structurally, this forest has a crown about 30-35 meters above the ground but individual trees rising five meters or more above the crown ([Pl. 2,](#)

[Pg 31]

figs. 1-2). There is no clear stratification within the forest; in many parts of it there are dense growths of bushes, small trees, and palms. The forest on the Gulf Coastal Plain, therefore, most properly might be referred to as a quasi-rainforest, a term that has been applied to other such forests in tropical America.

Among the abundant and dominant trees in this forest are *Swietenia macrophylla*, *Calophyllum brasiliense*, *Achras zapota*, *Ceiba pentandra*, *Castilla elastica*, *Cedrela mexicana*, *Tabebuia Donnell-Smithi*, *Calocarpum mammosum*, *Bombax ellipticum*, and a variety of *Ficus*. Epiphytes and lianas are abundant.

Central Ridges

The vegetation of the central ridges of the isthmus is, for the most part, transitional between the tall rainforest of the Gulf Coastal Plain and the low xerophytic scrub forest of the semi-arid Pacific Coastal Plain. On the northern slopes of the ridges the rainforest is more poorly developed than on the plains to the north. Many of the same species of trees are present, including *Ceiba pentandra*, *Cedrela mexicana*, *Swietenia macrophylla*, and *Ficus* sp.; nevertheless, these seldom are as large as members of the same species in the forest on the plains. Other species present on the forested slopes include *Tabebuia Donnell-Smithi*, *Zanthoxylum melanostictum*, *Pithecolobium arboreum*, and a species of *Pterocarpus*. The structure of this forest differs from that on the Gulf Coastal Plain in that there is no continuous upper canopy and there is a dense undergrowth (Pl. 3, fig. 1). This type of forest extends from Mogoñe southward to about Matías Romero.

In the vicinity of Matías Romero open pine-oak forest (*Pinus caribaea* and *Quercus* sp.) is found on some ridges as low as 250 meters above sea level.

On the Plains of Chivela in the southern part of the central region the vegetation takes on a semi-arid appearance, especially in a savanna on the plains. Clumps of small trees and bushes, consisting of *Croton nivea*, *Cordia cana*, *Jacquinia aurantiaca*, *Calycophyllum candidissimum*, and *Cassia emarginata*, are scattered on a grassy plain, from which rise widely-spaced palms of an unknown species (Pl. 3, fig. 2).

[Pg 32]

Pacific Coastal Plain

The vegetation of the Pacific lowlands definitely is semi-arid in character. Most of the trees are deciduous, thorny, and short. During the dry season the landscape presents a barren appearance, but shortly after the first summer rains dense green foliage appears (Pl. 4, figs. 1 and 2). Between Juchitán and La Ventosa few trees are more than two meters high (Pl. 5, fig. 1). In many areas the trees and bushes form an almost impenetrable tangle, whereas on especially rocky soils or on slopes those plants are more widely spaced. Abundant and widespread species of trees on the Plains of Tehuantepec include *Acacia cymbispina*, *Prosopis chilensis*, *Caesalpinia coriaria*, *Caesalpinia eriostachys*, *Celtis iguanaea*, *Cordia brevispicata*, *Jatropha aconitifolia*, and *Crescentia alata*.

Montane Vegetation

In order to illustrate the interruption of subtropical and temperate types of vegetation by the lowlands of the Isthmus of Tehuantepec, it is necessary to digress for a moment from the isthmus and consider the types of vegetation present on the adjacent highlands. On the higher peaks, such as Cerro de Zempoaltepetl, above about 2500 meters is fir forest (*Abies religiosa*); lower on the slopes are extensive pine forests, which on some slopes are mixed with oak or replaced entirely by oaks. Subtropical cloud forest, characterized by relatively cool temperatures and high humidity, is found at elevations usually between 1000 and 1800 meters on the windward slopes of the Sierra Madre Oriental in Veracruz and northern Oaxaca and on the northern and southern slopes of the Chiapan-Guatemalan Highlands. None of these forest types is continuous across the Isthmus of Tehuantepec.

The Sierra de los Tuxtlas

Although actually located in the region of the Isthmus of Tehuantepec, the Sierra de los Tuxtlas, because of its isolated position, need not be considered in great detail in analyzing the distribution of animals inhabiting the lowlands of the isthmus. Nevertheless because some species living in the highlands adjacent to the isthmus also live in the Tuxtlas, this range is briefly described here. The Sierra de los Tuxtlas is a range of volcanos lying near the Gulf Coast in southern Veracruz between the mouths of the Río Papaloapan and the Río Coatzacoalcos. Volcán San Martín, the highest peak, rises above 1800 meters. This range of volcanos is surrounded by lowlands, which immediately to the south and west are covered with savanna and in places by scrub forest. The luxuriant nature of the vegetation on these volcanos indicates that this range receives much more rainfall than the surrounding lowlands. Especially on the northern slopes, tropical rainforest is well developed; this is replaced at about 1200 meters by cloud forest. The southern and western slopes are drier, for the lower slopes are covered with a scrubby, but evergreen, forest.

[Pg 33]

Detailed comments on the herpetofauna of the Tuxtlas have been omitted purposefully, for the reptiles and amphibians of the region currently are being studied by Douglas Robinson.

GAZETTEER

The following localities are those referred to in the text. The name of the locality (listed alphabetically by states) is followed by latitude, longitude, elevation, general description (town, ranch, etc.), and general type of habitat. Unless otherwise noted, distances are straight-line (airline) distances in kilometers. The localities have been plotted from the American Geographical Society's "Map of Hispanic America on the Scale of 1:1,000,000" (Millionth Map). Numbers in brackets identify the position of a locality on the accompanying map ([Fig. 1](#)).

Oaxaca

Agua Caliente.—Lat. 16° 38'; long. 94° 48'; elev. 140 m. A hot spring, 6.9 km. north of La Ventosa on the Trans-isthmian Highway; arid scrub forest [43].

Arenal, Cerro de.—Lat. 16° 18'; long. 95° 32'; elev. 925 m. (crest). A ridge northeast of Tenango; scrub forest on slopes and pine-oak forest on top [64].

Barrio, El.—Lat. 16° 38'; long. 95° 07'; elev. 314 m. A village about 10 kilometers southwest of Matías Romero; transition between scrub forest and broadleaf hardwood forest [38].

Bisilana.—Lat. 16° 20'; long. 95° 13'; elev. 35 m. A place name for a former ranch at the edge of Tehuantepec; open arid scrub forest [62].

Chivela.—Lat. 16° 20'; long. 95° 01'; elev. 195 m. A village on the Trans-isthmian Railroad, 26 kilometers by rail south of Matías Romero and on the western edge of the semi-arid Plains of Chivela [40].

Concepción.—Lat. 16° 17'; long. 95° 29'; elev. 1200 m. A ranch on the slopes of Cerro Arenal, east-northeast of Tenango; dry pine-oak forest [66].

Coyol.—Exact position unknown; according to Smith and Taylor (1950: 10), Coyol is "between San Antonio and Las Cruces."

[Pg 34]

Donají.—Lat. 17° 13'; long. 95° 02'; elev. 90 m. A village at Km. 155 on the Trans-isthmian Highway; rainforest [29].

Escurano.—Lat. 16° 25'; long. 95° 27'; elev. 500 m. A ranch about 25 kilometers west-northwest of Tehuantepec; arid scrub forest [51].

Guichicovi, San Juan.—Lat. 16° 58'; long. 95° 06'; elev. 250 m. A village on the north slopes of the isthmus, 12 kilometers north-northwest of Matías Romero; cleared hardwood forest and coffee plantations [33].

Huilotepec.—Lat. 16° 14'; long. 95° 09'; elev. 30 m. A small village on the Río Tehuantepec, 13 kilometers south-southeast of Tehuantepec; open arid scrub forest [69].

Ixtepec.—Lat. 16° 34'; long. 95° 06'; elev. 60 m. A town and railroad junction on the northwestern edge of the Plains of Tehuantepec; arid scrub forest [45].

Juchitán.—Lat. 16° 26'; long. 95° 02'; elev. 15 m. A town on the Plains of Tehuantepec, 22 kilometers by road east-northeast of Tehuantepec; arid scrub forest [50].

Limón.—Lat. 16° 20'; long. 95° 29'; elev. 600 m. A former agrarian colony and now a small ranch about 27 kilometers west of Tehuantepec; arid scrub forest [60].

Matías Romero.—Lat. 16° 53'; long. 95° 02'; elev. 200 m. A town on the Trans-isthmian Highway and railroad in the hills near the crest of the isthmus; broadleaf hardwood forest and open pine-oak forest [36].

Mixtequilla.—Lat. 16° 24'; long. 95° 18'; elev. 40 m. A village on the Río Tehuantepec, northwest of Tehuantepec; dense scrub forest [57].

Modelo, El.—Lat. 17° 07'; long. 94° 43'; elev. 200 m. An old rubber plantation on the Río Chalchijapa, a tributary to the Río Coatzacoalcos; rainforest [31].

Nanches, Portillo Los.—Lat. 16° 35'; long. 95° 37'; elev. 500 m. A place name, about 4 kilometers southeast of Totolapilla; scrub forest [44].

Nizanda.—Lat. 16° 42'; long. 95° 02'; elev. 150 m. A village on the Trans-isthmian Railroad between Chivela and Ixtepec; dense scrub forest [42].

Nueva Raza.—Exact location unknown; according to Thomas MacDougall, this locality is in the lowlands of northern Oaxaca; rainforest.

Palmar.—Lat. 16° 43'; long. 94° 40'; elev. 300 m. A small ranch on the west base of Cerro Atravesado; scrub forest [39].

Papaloapan.—Lat. 18° 11'; long. 96° 06'; elev. 25 m. A small village on the Río Papaloapan in northern Oaxaca; low evergreen forest and savanna [11].

Princesa, La.—Lat. 16° 56'; long. 95° 02'; elev. 150 m. A ranch on the northern slopes of the isthmus, 6 kilometers by road north of Matías Romero; poorly developed rainforest [34].

Quiengola, Cerro de.—Lat. 16° 24'; long. 95° 22'; elev. 900 m. (crest). A hill 15 kilometers west-northwest of Tehuantepec; dense scrub forest on slopes and scattered pines on top [55].

Salazar.—Lat. 16° 25'; long. 95° 20'; elev. 45 m. A ranch on the Río Tehuantepec, northwest of Tehuantepec; dense scrub forest [52].

Salina Cruz.—Lat. 16° 10'; long. 95° 12'; sea level. A port on the Golfo de Tehuantepec; open arid scrub forest [70]. Collections were made in the vicinity of the town and in the open scrub forest 2.4 kilometers north at an elevation of 20 meters.

San Antonio.—Lat. 16° 15'; long. 95° 22'; elev. 40 m. A ranch about 25 kilometers west-southwest of Tehuantepec; arid scrub forest [68].

San Pablo.—Lat. 16° 24'; long. 95° 18'; elev. 40 m. A ranch on the Río Tehuantepec, northwest of Tehuantepec; dense scrub forest [56]. Cerro San Pablo probably is the hill north of this ranch; this is shown on some maps as Cerro de los Amates.

San Pedro, Cerro de.—Lat. 16° 18'; long. 95° 28'; elev. about 1100 m. (crest). A ridge about 24 kilometers west of Tehuantepec and east of Cerro Arenal; scrub forest on slopes and pine-oak forest on top [65].

[Pg 35]

Santa Efigenia.—Lat. 16° 25'; long. 94° 13'; elev. 500 m. A ranch on the southern slopes of the Sierra Madre de Chiapas, 8 kilometers north-northwest of Tapanatepec; scrub forest. Former home of Francis Sumichrast [53].

Santa Lucía.—Lat. 16° 18'; long. 95° 28'; elev. 800 m. A place name for a former ranch on the east slopes of Cerro Arenal; scrub forest [63].

Santa María Chimalapa.—Lat. 16° 55'; long. 94° 42'; elev. 296 m. A village on the Río de los Milagros, a tributary to the Río Coatzacoalcos; rainforest [35].

Santiago Chivela.—Lat. 16° 42'; long. 94° 53'; elev. 200 m. A village on the Trans-isthmian Highway, 13.4 kilometers by road south of Matías Romero; dry, grassy plains and scattered clumps of scrubby trees and palms [41]. Collections were made in the vicinity of the village and at a rocky stream, 11 kilometers south on the Trans-isthmian Highway at an elevation of 230 m.

Santo Domingo (Petapa).—Lat. 16° 50'; long. 95° 08'; elev. 225 m. A village about 13 kilometers west-southwest of Matías Romero; semi-arid scrub forest [37].

Sarabia.—Lat. 17° 04'; long. 95° 02'; elev. 100 m. A village 25 kilometers north of Matías Romero on the Trans-isthmian Highway; rainforest [32]. Collections were made in the vicinity of the village and in the rainforest along the Río Sarabia, 5 kilometers north of the village at an elevation of 80 meters.

Tapanatepec.—Lat. 16° 32'; long. 94° 12'; elev. 90 m. A town on the Pan-American Highway on the lower slopes of the Sierra Madre de Chiapas; dense scrub forest [58].

Tehuantepec.—Lat. 16° 20'; long. 95° 14'; elev. 35 m. A large town on the Plains of Tehuantepec; scrub forest [61]. Collections were made in the vicinity of the town and in the dense scrub forest 8.6 kilometers west at an elevation of 85 meters and 14 kilometers west at an elevation of 120 meters.

Tenango.—Lat. 16° 16'; long. 95° 30'; elev. 1100 m. A town in the mountains about 40 kilometers west-southwest of Tehuantepec; scrub forest [67].

Tequisistlán.—Lat. 16° 24'; long. 95° 37'; elev. 190 m. A village in the valley of the Río Tequisistlán, a tributary to the Río Tehuantepec; dense scrub forest [54]. Most collections were made about one kilometer north of the village where the Pan-American Highway crosses the Río Tequisistlán.

Tolosita.—Lat. 17° 12'; long. 95° 03'; elev. 80 m. A village on the Río Tortuguero near the Trans-isthmian Highway; rainforest [30].

Tres Cruces.—Lat. 16° 26'; long. 95° 51'; elev. 750 m. A ranch near the Pan-American Highway, 70 kilometers by road west-northwest of Tehuantepec; dense scrub forest [49].

Tuxtepec.—Lat. 18° 06'; long. 96° 05'; elev. 80 m. A town on the Río Papaloapan in northern Oaxaca; low evergreen forest [12].

Ubero.—Lat. 17° 18'; long. 95° 00'; elev. 80 m. A lumber camp and railroad station, 8.5 kilometers south of the Río Jaltepec on the Trans-isthmian Highway; rainforest [28].

Unión Hidalgo.—Lat. 16° 27'; long. 94° 48'; elev. 7 m. A village on the railroad, 20 kilometers east-northeast of Juchitán; open scrub forest [48].

Ventosa, La.—Lat. 16° 30'; long. 94° 51'; elev. 25 m. A village at the junction of the Pan-American and Trans-isthmian highways; open scrub forest [46].

Zanatepec.—Lat. 16° 28'; long. 94° 22'; elev. 80 m. A village on the Pan-American Highway at the eastern edge of the Plains of Tehuantepec; dense scrub forest [47]. Most collections were made in the scrub forest 5 to 8 kilometers west-northwest of the village.

Zarzamora.—Lat. 16° 21'; long. 95° 48'; elev. 800 m. A ranch between La Reforma (16 kilometers west of Tequisistlán) and Santa María Ecatepec; scrub forest with oaks on higher ridges [59].

Veracruz

[Pg 36]

Acayucan.—Lat. 17° 57'; long. 94° 55'; elev. 160 m. A large town on the Trans-isthmian Highway; rainforest [21]. Collections were made in the vicinity of the town, but principally at Rancho Las Hojitas, 7 kilometers northwest of town at an elevation of 150 meters.

Alvarado.—Lat. 18° 47'; long. 95° 47'; sea level. A fishing village at the mouth of the Río Papaloapan; coastal dunes and marshes [1]. Most collections were made 1-3 kilometers southeast of the village in marshes on the leeward side of the coastal dunes.

Amatitlán.—Lat. 18° 26'; long. 95° 45'; elev. 4 m. A village on the bank of the Río Papaloapan; savanna and sugar plantations [6].

Aquilera.—Lat. 17° 48'; long. 95° 01'; elev. 150 m. A village 21 kilometers southwest of Acayucan on the Trans-isthmian Highway; rainforest [22].

Ayentes.—Lat. 18° 10'; long. 94° 26'; elev. 2 m. A railroad station on the east bank of the Río Coatzacoalcos, across the river from the city of Coatzacoalcos; scrub forest and marshes [17].

Berta.—Lat. 18° 07'; long. 94° 27'; elev. 5 m. A ranch just south of Coatzacoalcos; scrub and low evergreen forest [15].

Chacaltianguis.—Lat. 18° 18'; long. 95° 52'; elev. 5 m. A village on the Río Papaloapan; savanna [8].

Ciudad Alemán.—Lat. 18° 13'; long. 96° 07'; elev. 30 m. A new government town, headquarters of the Comisión del Papaloapan; scrub and low evergreen forest [10].

Coatzacoalcos (formerly Puerto México).—Lat. 18° 10'; long. 94° 27'; elev. 2 m. A seaport at the mouth of the Río Coatzacoalcos; scrub on coastal dunes; marshes and low evergreen forest inland [16]. Most collections are from the forest-savanna ecotone, 8 kilometers southwest of town.

Cosamaloapan.—Lat. 18° 22'; long. 95° 50'; elev. 4 m. An agricultural town on the Río Papaloapan; savanna and sugar plantations [7].

Cosoleacaque.—Lat. 17° 59'; long. 94° 38'; elev. 55 m. A village 8 kilometers by road west of Minatitlán; savanna [19].

Cuatotolapam.—Lat. 18° 08'; long. 95° 16'; elev. 13 m. A village on the Trans-isthmian Railroad; savanna and low evergreen forest along streams [13].

Hueyapan.—Lat. 18° 08'; long. 19° 09'; elev. 85 m. A town 32 kilometers by road northwest of Acayucan; savanna and low evergreen forest [14]. Collections were made in the vicinity of the town and from forest 10 kilometers southeast of town at an elevation of 135 meters.

Jesús Carranza (formerly Santa Lucrecia).—Lat. 17° 27'; long. 95° 02'; elev. 80 m. A town and railroad junction in the middle of the isthmus; rainforest [26]. Most of Dalquest's specimens came from varying distances from Jesús Carranza along the Río Coatzacoalcos and its tributaries.

Minatitlán.—Lat. 17° 58'; long. 94° 32'; elev. 15 m. An oil refinery center on the Río Coatzacoalcos; savanna [20].

Naranja.—Lat. 17° 35'; long. 95° 07'; elev. 100 m. A village on the Trans-isthmian Highway, 45 kilometers south of Acayucan; rainforest and palm forest [24].

Novillero.—Lat. 18° 16'; long. 95° 59'; elev. 10 m. A village on the Río Papaloapan; scrub forest and grassland [9].

Oaxaqueña, La.—Lat. 17° 26'; long. 94° 53'; elev. 80 m. A hacienda on the Río Coatzacoalcos about 12 kilometers east of Jesús Carranza; rainforest [27].

Playas, Río de las.—Lat. 18° 08'; long. 94° 07'; elev. 3 m. The river (sometimes known as the Río Tonolá) forming the boundary between the states of Veracruz and Tabasco; rainforest [18].

San Lorenzo.—Lat. 17° 44'; long. 94° 42'; elev. 25 m. A village on the Río Chiquito, about 30 kilometers southeast of Acayucan; rainforest [23].

Suchil.—Lat. 17° 31'; long. 95° 03'; elev. 40 m. A village on the Trans-isthmian Railroad, about 10 kilometers north of Jesús Carranza; rainforest [25].

[Pg 37]

Tecolapan.—Lat. 18° 24'; long. 95° 18'; elev. 275 m. A village on a small river of the same name in the western foothills of Los Tuxtlas; rainforest [5].

Tejada, Lerdo de.—Lat. 18° 37'; long. 95° 31'; elev. 60 m. An agricultural village, 35 kilometers by road east-southeast of Alvarado; scrub forest, marshes, and sugar plantations [2]. Collections were made in a marsh, 5 kilometers west-northwest of the village.

Tlacotalpan.—Lat. 18° 37'; long. 95° 42'; elev. 3 m. A town at the confluence of the Río San Juan and Río Papaloapan; marshes and sugar plantations [3].

Tula.—Lat. 18° 36'; long. 95° 22'; elev. 150 m. A village near the western base of Los Tuxtlas; low evergreen forest and marshes [4]. Collections were made in a marsh 3 kilometers northwest of the village.

THE AMPHIBIAN FAUNA OF THE LOWLANDS

In presenting an account of the amphibian fauna of the lowlands of the Isthmus of Tehuantepec three items must be considered:

1. The composition of the fauna.
2. The ecology of the fauna.
3. The distribution of the fauna.

These items, together with similar data concerning the amphibians of the adjacent highlands, will form the basis for the subsequent discussion of the establishment of present patterns of distribution in the isthmian region.

Composition of the Fauna

The amphibian fauna of the lowlands of the Isthmus of Tehuantepec consists of 36 species definitely recorded from the area. These include one genus and species of caecilian, one genus, including three species of salamanders, and 14 genera and 32 species of anurans.

In comparison with the known amphibian fauna of the forested and savanna portions of El Petén, Guatemala (Stuart, 1935 and 1958), we find that there are more species recorded from the isthmus than from El Petén. Stuart found only 20 species of amphibians in both forest and savanna habitats in El Petén. Of the 36 species of amphibians known from the isthmus, 28 occur on the Gulf lowlands and live in forest or savanna habitats.

The geographic position of the isthmus with regard to major faunal areas in Middle America, and the diversity of the environment are important factors in understanding the presence of a large number of species of amphibians in the isthmus. The large number of species probably is a reflection of the diversity of the environment; this diversity is the result of fluctuation of climate, and thus environments, in the not too distant past. In no individual habitat, such as rainforest, savanna, or scrub forest, does the number of species approach the total for the region.

[Pg 38]

Ecology of the Fauna

In the preceding section on the description of the Isthmus of Tehuantepec I have outlined the major environments in the region. With respect to the distribution of amphibians we may recognize three major environments in the isthmus—rainforest, semi-arid scrub forest, and savanna. Each of these has varying combinations of physical and biotic factors that are important in the ecology of amphibians. Because of the importance of moisture, not only for the maintenance of life in these animals, but in most species their dependence on water for breeding purposes, this environmental factor is considered the most significant in the ecological distribution of amphibians. A second factor is the availability of necessary shelter, especially aestivation sites. These factors will be compared in the three major environments in the region.

Moisture is present in the environment in the form of free water or atmospheric moisture. With respect to the latter, it is well known that dense shaded forests have a considerably higher relative humidity than do open plains or areas with only scattered trees. Thus, the rainforests of the isthmus are characterized by a much higher relative humidity than are the savannas or semi-arid scrub forests. Although with regard to rainfall there is a pronounced dry season in the regions supporting rainforest, there still remains considerable atmospheric moisture in this environment throughout the year. The dense foliage provides shade and protection from desiccating effects of wind and sunlight; furthermore the foliage contributes moisture by transpiration. The deep alluvial soils mixed with large quantities of organic matter (decaying

leaves and rotting logs) maintain considerable quantities of moisture.

Conversely, the savannas and scrub forests have little atmospheric moisture during the dry season. In the former habitat there are few trees to provide shade or moisture through transpiration; in the latter most of the trees lose their leaves during the dry season. Thus, these environments are desiccated by the dry winds and direct sunlight. Furthermore, the soils in these environments become dry and caked. There is little or no terrestrial matter to hold moisture.

Free water in these environments is present in a variety of forms at different times of the year. During the dry season the more extensive marshes in the savannas persist; many ponds and most of the streams in the rainforest are permanent throughout the year. In the scrub forest all except the largest streams become dry during the dry season, and no ponds exist through the dry season. With the advent of the first heavy summer rains the stream beds fill with water, marshes expand, and many depressions become ponds (Pl. 5, fig. 2). At this time the amount of free water in the scrub forests and savannas greatly increases, much more so than that in the rainforests.

[Pg 39]

Environments are vertically stratified in the rainforests. There is the deep alluvial soil, the ground litter of leaves and decaying logs, the low bushes and small trees, and finally the tall trees of the forest. Each of these provides certain types of shelter for amphibians. The moist soil and litter on the forest floor is an important microhabitat for fossorial and strictly terrestrial species. The dense foliage of the trees, tree holes, and bromeliads growing on the trees provide shelter for arboreal species. Arboreal and terrestrial bromeliads and the terrestrial elephant-ear plants (*Xanthosoma*) contain water in the axils of their leaves throughout the year and thus provide an important habitat for amphibians. The low, spiny, deciduous trees of the scrub forest and the grasses and scattered trees in the savannas provide little shelter. In the savannas there are depressions, some of which contain water throughout the year; these are often surrounded by trees providing refugia for amphibians during the dry season. In the scrub forest many species congregate along streams and in moist stream beds during the dry season.

Now that the important ecological factors of the major environments have been outlined, we may examine the local distribution of amphibians in each of these. Beginning with the rainforest, we find only one fossorial species, *Gymnopsis mexicanus*. A large number of species are found on the forest floor; characteristic inhabitants of the leaf litter are: *Bufo valliceps*, *Eleutherodactylus rhodopis*, *Microbatrachylus pygmaeus*, and *Syrrhophus leprus*. Other terrestrial amphibians usually are not scattered throughout the rainforest, as are those named immediately above, but instead inhabit areas of forest adjacent to ponds or streams; these species include: *Bufo marinus*, *Eleutherodactylus natator*, *Eleutherodactylus rugulosus*, *Leptodactylus labialis*, *Leptodactylus melanonotus*, *Rana palmipes* and *Rana pipiens*. The most striking ecological assemblage of amphibians in the rainforest is the arboreal group of species, including:

[Pg 40]

Bolitoglossa occidentalis
Bolitoglossa platydactyla
Eleutherodactylus alfredi
Hyla baudini
Hyla ebraccata
Hyla loquax
Hyla microcephala martini
Hyla picta
Phrynohyas modesta
Phrynohyas spilomma
Phyllomedusa callidryas taylori

In the savannas *Rhinophrynus dorsalis*, *Engystomops pustulosus*, and *Gastrophryne usta* are fossorial species. *Bufo marinus*, *Leptodactylus melanonotus*, *Leptodactylus labialis*, *Rana palmipes*, and *Rana pipiens* are found in the vicinity of permanent water in the savannas. Although the savanna habitat does not provide the ecological conditions for the existence of an arboreal fauna, many arboreal species from the surrounding rainforest utilize the extensive marshes and ponds in the savannas for breeding purposes. Thus, *Hyla baudini*, *Hyla microcephala martini*, *Hyla picta*, and *Phrynohyas spilomma* have been found breeding in savannas. In parts of savannas where clumps of trees surround depressions containing water throughout the year, individuals of the species named above, together with *Hyla loquax* and *Phyllomedusa callidryas taylori*, may not only breed, but remain throughout the year.

In the semi-arid scrub forest the same fossorial species as exist in the savannas are found. Likewise, *Bufo marinus*, *Leptodactylus labialis*, *Leptodactylus melanonotus*, and *Rana pipiens* are found near permanent water. Terrestrial species in this semi-arid environment include *Bufo canaliferus*, *Bufo coccifer*, *Bufo marmoratus*, *Syrrhophus pipilans*, and *Diaglena reticulata*. Of these, *Syrrhophus pipilans* sometimes inhabits low trees and bushes; the others may be fossorial. The arboreal species in the scrub forest include *Hyla baudini*, *Hyla robertmertensi*, *Hyla stauferi*, and *Phyllomedusa dacnicolor*.

Eleutherodactylus rugulosus and *Hylella sumichrasti* live along streams in the scrub forest. *Hylella sumichrasti* lays its eggs in these streams.

In comparing the ecological differences in the amphibian assemblages in the three major habitats, the most obvious difference is the great percentage of arboreal species in the rainforest as compared with savanna and scrub forest. Only four arboreal species are found in the scrub forest, none in the savannas, but eleven in the rainforest. Likewise, there is an absence of

ground-dwelling forms in the arid habitats; in the latter the only terrestrial species are those that are found near water. A possible exception is *Syrrophus pipilans*. [Pg 41]

From the above analysis of ecological distribution we may see that the rainforest provides a variety of habitats for amphibians and that these habitats are suitable for amphibian life throughout the year. On the other hand, the savannas and scrub forests are characterized by extreme conditions of desiccation, a factor of considerable importance in limiting the ecological distribution of amphibians. However, there still is a diversity of amphibians in these semi-arid environments. Obviously, these species are adapted in various ways for survival during the dry season, at which time environmental conditions are such that the animals cannot carry on their normal activities.

Although there is not an abundance of data concerning the seasonal activity of the fauna, what is available shows some interesting correlations with the environments. During the dry season in the scrub forest there is essentially no amphibian activity; an occasional *Rana pipiens* may be seen along a river, or a *Bufo marinus* may be seen at night. In the rainforest the terrestrial-breeding amphibians are active during the dry season. *Eleutherodactylus rugulosus* is found at night or by day along streams. *Eleutherodactylus rhodopis*, *Microbatrachylus pygmaeus*, and *Bufo valliceps* are active during the day; these plus *Bolitoglossa occidentalis*, *Bolitoglossa platydactyla*, *Eleutherodactylus alfredi*, *Eleutherodactylus natator*, and an occasional *Hyla* are active at night.

With the onset of the heavy summer rains and the subsequent formation of breeding ponds, amphibian activity reaches a peak. This is especially noticeable in the semi-arid environments, where during the dry season there is little activity.

Among the anurans in the isthmus the four species of *Eleutherodactylus*, the two species of *Syrrophus*, and the one species of *Microbatrachylus* are either known, or presumed, to lay eggs on the ground; these develop directly into small frogs. All of the other anurans deposit their eggs in water or attach them to objects over water (*Phyllomedusa*); these hatch into tadpoles, which later metamorphose into frogs. *Hylella sumichrasti* is known to breed only in streams. All of the other species breed in ponds, but at times some species deposit their eggs in streams; in this last group are *Bufo valliceps*, *Bufo marmoratus*, *Phyllomedusa callidryas taylori*, and *Rana pipiens*.

Although the ecological data are incomplete, they do show that ecological conditions differ greatly in the three major environments, different species of amphibians inhabit these environments, and that the fauna is ecologically diversified in each environment. [Pg 42]

Distribution of the Fauna

Plotting the distributions of species of amphibians known to live in the lowlands of the Isthmus of Tehuantepec results in an array of geographic patterns. These may be analyzed with respect to those species that are restricted either to the Gulf lowlands or the Pacific lowlands, or those that occur on both the Gulf and Pacific lowlands. Furthermore, the distributions may be analyzed with respect to those species whose ranges extend from México across the Isthmus of Tehuantepec into Central America, those that reach the isthmus from Central America but do not extend into México proper, and those that reach the isthmus from México but do not extend into Central America. It should be kept in mind that the following analysis is of the lowland inhabitants only. Species inhabiting the foothills and mountains will be discussed later.

1. SPECIES RESTRICTED TO THE GULF LOWLANDS. Of the 36 species of amphibians recorded from the Isthmus of Tehuantepec, nine (25 per cent) are in this group. Four of these (*Eleutherodactylus alfredi*, *Syrrophus leprus*, *Hyla loquax*, and *Hyla picta*) live in the Gulf lowlands to the east and to the west of the isthmus. Three others (*Hyla ebraccata*, *Hyla microcephala martini* and *Phyllomedusa callidryas taylori*) are primarily Central American in their distribution and reach the northwestern limits of their ranges in the Gulf lowlands of the isthmus, whereas *Bolitoglossa platydactyla* and *Eleutherodactylus natator* reach the southern limits of their distributions in the isthmus.

2. SPECIES RESTRICTED TO THE PACIFIC LOWLANDS. This group includes six species, or 17 per cent of the amphibian fauna of the isthmus. Two of these (*Bufo coccifer* and *Syrrophus pipilans*) range to the east and to the west of the isthmus on the Pacific lowlands. Two others (*Bufo canaliferus* and *Hyla robertmertensi*) range from the isthmus into Central America, and *Diaglena reticulata* and *Phyllomedusa dacnicolor* range on the Pacific lowlands of México southeastward to the isthmus.

3. SPECIES THAT OCCUR ON THE PACIFIC AND GULF LOWLANDS. This group includes 19 species, or 53 per cent of the total amphibian fauna. Of these, nine species (25 per cent of the entire amphibian fauna) are widespread throughout the lowlands of México and Central America; these are: [Pg 43]

Gymnopsis mexicanus
Rhinophrynus dorsalis
Bufo marinus
Engystomops pustulosus
Leptodactylus labialis
Leptodactylus melanonotus
Hyla baudini
Hyla staufferi
Rana pipiens

Four species occur on the Gulf lowlands to the east and to the west of the isthmus, but on the Pacific lowlands they occur only to the east; this group includes *Bufo valliceps*, *Eleutherodactylus rhodopis*, *Phrynohyas modesta*, and *Phrynohyas spilomma*. Three species live to the east and to the west of the isthmus on the Pacific lowlands, but only to the west on the Gulf lowlands; these include *Eleutherodactylus rugulosus*, *Microbatrachylus pygmaeus*, and *Gastrophryne usta*.

Six species that cross the isthmus live on the humid Gulf lowlands and on the humid lowlands of Chiapas and Guatemala, but not on the semi-arid Plains of Tehuantepec; these include *Bolitoglossa occidentalis*, *Eleutherodactylus rhodopis*, *Microbatrachylus pygmaeus*, *Phrynohyas modesta*, *Phrynohyas spilomma*, and *Rana palmipes*. Of these, *Microbatrachylus pygmaeus* also occurs in scattered humid environments to the west of the isthmus on the Pacific lowlands.

Two species are endemic to the isthmian region. *Bolitoglossa veracruzis* is known only from the humid northern slopes of the isthmus. *Hylella sumichrasti* occurs on the Pacific slopes of the isthmus and extends to the east into western Chiapas.

In analyzing the distribution of the amphibians with respect to those that are restricted to either the Pacific or Gulf lowlands or those that cross the continental divide in the isthmus, we find that 25 per cent of the species are restricted to the Gulf lowlands, 17 per cent are restricted to the Pacific lowlands, and 53 per cent cross the isthmus. In analyzing the distribution patterns with respect to those that extend across the isthmus of Tehuantepec from east to west, we find that 14 per cent of the species do not extend east of the isthmus into Central America and that 19 per cent do not range west of the isthmus into México proper; 61 per cent of the species range to the east and to the west of the isthmus. Of the 36 species of amphibians inhabiting the isthmus only nine species (25 per cent) range across the isthmus, that is, occur on the Gulf and Pacific lowlands, and also range to the east and to the west of the isthmus. To these wide-ranging species the diversified environments of the isthmus do not present a barrier to distribution. The other 27 species (75 per cent) either do not cross the isthmus from east to west or from north to south; thus, probably in one way or another the isthmus presents a barrier to their distribution.

[Pg 44]

THE AMPHIBIAN FAUNA OF THE FOOTHILLS AND ADJACENT HIGHLANDS

To amphibians inhabiting the foothills and mountains of southern México and northern Central America, the isthmus presents a great barrier to dispersal. For example, salamanders of the genus *Thorius*, the *mexicanus* and *augusti* groups of the genus *Eleutherodactylus*, the *bistincta* group of the genus *Hyla*, and the genus *Tomodactylus* occur on the Mexican Plateau and southward into the mountains of Oaxaca. Nevertheless, no members of these groups are present in the Guatemalan-Chiapan Highlands. The genera *Chiropterotriton*, *Magnadigita*, *Pseudoeurycea*, and *Ptychohyla*, as well as the *eximia* group of *Hyla* are represented by different species in the Guatemalan-Chiapan Highlands than in the mountains of México on the other side of the isthmus. Several species of *Plectrohyla* occur in the Guatemalan-Chiapan Highlands, but none is known from the Mexican Highlands, although one species occurs in the Tuxtlas.

Living in the humid forests of the foothills are salamanders of the genus *Lineatriton*, frogs of the *spatulatus* group of *Eleutherodactylus*, *Anotheca coronata*, *Hyla miotympanum*, and *Phyllomedusa moreleti*. All of these occur in the foothills of the Sierra Madre Oriental in eastern México and in Los Tuxtlas. *Lineatriton*, *Hyla miotympanum*, and the *spatulatus* group of *Eleutherodactylus* do not occur in the foothills of the Guatemalan-Chiapan Highlands; those amphibians reach the end of their ranges at the isthmus. *Phyllomedusa moreleti* and *Anotheca coronata* are found in the northern foothills of the Guatemalan-Chiapan Highlands, and *Phyllomedusa moreleti* is found in the foothills on the Pacific slopes of the Chiapan Highlands.

Although the above analysis is not so detailed as that of the lowland inhabitants, it does show that all of the genera and species of amphibians known to inhabit the foothills and highlands adjacent to the isthmus, only two species of amphibians cross the isthmus from one highland mass to the other. Thus, it is evident that the Isthmus of Tehuantepec presents a great barrier to dispersal of these groups of amphibians.

ESTABLISHMENT OF PRESENT PATTERNS OF DISTRIBUTION

[Pg 45]

From the foregoing analysis of geographical and ecological distribution in the Isthmus of Tehuantepec we may strive for an interpretation of the events that led to the establishment of patterns of distribution displayed not only by the amphibians, but other terrestrial vertebrates as well. The thesis that I am proposing below is based on the premise that in southern México and northern Central America climatic fluctuation during the Pleistocene was of sufficient magnitude to cause vegetational shifts, both vertically and latitudinally, resulting in the establishment of alternating continuous and discontinuous lowland and highland environments, although this climatic fluctuation was not so great as to eliminate tropical lowland environments from the region. I feel that the present patterns of distribution of the amphibians in the Isthmus of Tehuantepec may be explained on this premise.

Many authors dealing with the herpetofauna of Middle America have followed Schuchert's (1935)

suggestion of a seaway in the isthmus during the Cenozoic. Thus, Burt (1931), Duellman (1956, 1958a), Gloyd (1940), Oliver (1948), Smith and Lafe (1946), and Stuart (1941) employed the presence of a seaway to explain distribution and speciation in various genera. Durham, Arellano, and Peck (1952), Olson and McGrew (1941), and Stirton (1954) have provided geological evidence that there probably was no Cenozoic seaway in the Isthmus of Tehuantepec. Even if there were a seaway in the Pliocene or Miocene (the dating of this possible seaway is open to question), its presence is not necessary to explain the present patterns of distribution in the isthmus.

In recent years the study of natural biotic environments, palynology, and Pleistocene chronology in Middle America has produced a wealth of data, which although still fragmentary begins to form a picture of past climatic events in that part of the world. Sedimentary studies by Hutchinson, Patrick, and Deevey (1956) and Sears, Foreman, and Clisby (1955) have provided evidence of drastic climatic shifts in México during the Pleistocene. Further evidence of bioclimatic fluctuation is provided by Martin and Harrell (1957) and Martin (1958); the latter has suggested that there was a displacement of the tropical zones in southern México and northern Central America by as much as 3000 feet during the glacial maximum. Much of the evidence of such drastic vertical shifts in environments is based on the presence of Pleistocene montane glaciers on Mexican volcanoes (White, 1956) and Chirripo in Costa Rica (Weyl, 1955). Dorf (1959) supports this idea of drastic climatic change.

[Pg 46]

In his studies of the avifauna of México and Guatemala Griscom (1932 and 1950) made an important issue of the continuity of the bird fauna in what he called the Subtropical Life-zone, which essentially consists of cloud forest, a widespread, but discontinuous, habitat on the Gulf (windward) slopes of the Mexican and Central American highlands at elevations between 1000 and 2000 meters. To account for this apparent uniformity in the avifauna Griscom hypothesized a continuity of cloud forest environment in the Pleistocene; this would result in the depression of cloud forests to the coastal lowlands and the displacement of tropical lowland environments far to the south in Central America. Stuart (1951) objected to this displacement of lowland tropical rainforest; he stated that a descent to sea level of a subtropical zone would have brought about either widespread extermination of the tropical fauna or acclimatization of that fauna to subtropical conditions.

Although palynological studies and some faunal studies of subtropical and temperate animals suggest a drastic climatic fluctuation that might have eliminated tropical environments in southern México and northern Central America, there is much biological evidence indicating the existence of tropical environments in this region even during the glacial maximum. Especially significant is the diversity of species inhabiting the present tropical environments; many of these have differentiated from related taxa to the south.

In the Pleistocene, climate fluctuated and vegetation shifted correspondingly in southern México and northern Central America. Most of the palynological studies and many studies of Pleistocene chronology deal with montane regions, either the Mexican Plateau or the mountains rising from the plateau. No such studies have been made in lowland tropical environments. During glacial advances the tropical lowland environments in México probably were not eliminated, for the great diversity of animals in these environments supports the hypothesis that they have been in existence for some time, although periodically they may have been discontinuous.

In order to understand the nature of bioclimatological events in the Pleistocene in lowland tropical environments of southern México, certain factors that are of little importance in the interpretation of Pleistocene chronology in the highlands must be considered. These factors are: 1) climatic moderation by oceans, 2) fluctuation in sea level, and 3) fluctuation in level of the water table as affected by sea level.

[Pg 47]

It is well-known that large bodies of water moderate the temperature on adjacent land. Furthermore, it is known that faunas of marine invertebrates shifted latitudinally in the Pleistocene; Trask, Phleger, and Stetson (1947) recorded cold-water Foraminifera then as far south as the Sigsbee Deep in the middle of the Gulf of Mexico. Large bodies of warm water, such as the Gulf of Mexico, Caribbean Sea, and Pacific Ocean of today, probably were not sufficiently cooled at the time of glacial advance to affect greatly the temperature of the winds blowing across them. Even if these bodies of water were somewhat cooler than now, the prevailing winds blowing from them onto the lowlands of México and northern Central America would have aided in maintaining relatively high temperatures there. These warm winds probably counteracted the cooling effect of glaciation in the lowlands and thereby maintained tropical conditions near the seas.

Although no adequate studies of Pleistocene beach lines have been made in southern México, such information is available for peninsular Florida on the other side of the Gulf of Mexico (Cooke, 1945). Fluctuation in sea level in the Pleistocene has been used by Hubbell (1954), Goin (1958), and Duellman and Schwartz (1958) to explain present patterns of distribution of animals in Florida. If Cooke's interpretations can be applied to the western side of the Gulf of Mexico, even generally, it would be supposed that sea level varied from about 300 feet lower than at present during the Illinoian Glacial Period to about 275 feet higher than at present during the Aftonian Interglacial Period. Lowering of sea level would expand the lowlands in the isthmus; rising sea level would restrict them, leaving only the central ridges and many islands in the isthmus, but never forming a seaway between the Gulf of Mexico and the Pacific Ocean.

Probably the level of the water table in the coastal lowlands and the gradients of the streams in

the lowlands and foothills was closely correlated with fluctuation in sea level. If sea level fluctuated as much as 575 feet in the Pleistocene, changes in the level of the water table must have been of considerable magnitude.

During times of glacial advances the lowlands of the isthmus probably were more extensive and had more semi-arid tropical environments than at present, with patches of rainforest existing in sheltered valleys along the major streams. In the course of bio-climatic fluctuation the semi-arid environments (scrub forest and/or savanna) were continuous at times from the Pacific lowlands across the isthmus to the Gulf lowlands. At those times such typical inhabitants of the semi-arid environments as *Rhinophrynus dorsalis*, *Engystomops pustulosus*, and *Hyla staufferi* could have made their way across the isthmus. At times of most extensive glaciation, such as the Illinoian, temperatures in the isthmus probably were low enough to permit the growth of pine-oak forest and cloud forest continuously across the central ridges from the Mexican to the Chiapan-Guatemalan highlands. At those times such highland members of the fauna as *Chiropterotriton*, *Pseudoeurycea*, *Magnadigita*, and the *eximia* group of *Hyla* could have crossed the isthmus. During Wisconsin time, climate probably fluctuated less than during previous glaciations; probably no montane environments, except cloud forest, were represented in the isthmus during the Wisconsin. Even at this relatively late date such animals as *Lineatriton lineola*, *Anotheca coronata*, and *Phyllomedusa moreleti* could have crossed the isthmus.

[Pg 48]

During the interglacial periods, which in the isthmian region were characterized by warmer temperatures, higher sea level and consequently more restricted areas of lowlands, and possibly more rainfall than in the glacial periods, the continuity of pine-oak forest and cloud forest from east to west across the isthmus was interrupted. Probably, too, the semi-arid environments were restricted, and the rainforests were more widespread. At those times animals now inhabiting the rainforests of the Gulf lowlands and those inhabiting the Pacific lowlands of Chiapas and Guatemala could have crossed the isthmus. In this group are species such as *Bolitoglossa occidentalis*, *Eleutherodactylus rhodopis*, *Microbatrachylus pygmaeus*, and *Rana palmipes*.

The amount of differentiation in isolated populations of amphibians in southern México and northern Central America gives some idea of relative lengths of time of isolation from related populations. Those populations inhabiting high mountain environments on either side of the isthmus are specifically distinct. Some populations inhabiting cloud forests lower on the mountains are specifically distinct from related populations on the other side of the isthmus; between others there is no recognizable differentiation. Even though many populations are isolated from other populations of the same species in the lowlands of the isthmus, there is no apparent speciation. This indicates that the lowland environments and their inhabitants have been isolated from one another for a shorter time than have the highland environments and their inhabitants.

[Pg 49]

ACCOUNTS OF SPECIES

For each species of amphibian known to occur in the lowlands of the Isthmus of Tehuantepec, localities where one or more specimens were collected are listed, and variation, ecology, and life histories are discussed. A total of 2833 specimens has been examined for the purposes of this study. Individual specimens cited in the text are listed with catalogue numbers and abbreviations of the name of the museum, as follows:

AMNH American Museum of Natural History
KU University of Kansas Museum of Natural History
MCZ Museum of Comparative Zoology, Harvard College
UIMNH University of Illinois Museum of Natural History
UMMZ University of Michigan Museum of Zoology
USNM United States National Museum

***Gymnopsis mexicanus mexicanus* Duméril and Bibron**

Oaxaca: El Barrio (3); Matías Romero; Tehuantepec (2). *Veracruz*: Cosamaloapan; Cuatotolapam (2).

The two specimens from Cuatotolapam were collected by Ruthven in an area of mixed savanna and forest. The three specimens (USNM 30535-7) listed above from El Barrio were collected by Sumichrast; possibly they came from another locality. The city of Tehuantepec is divided into seven districts called "barrios." The two specimens listed from Tehuantepec (MCZ 1604) merely bear the data "Tehuantepec, Mexico." They may have come from the town, the district, or from anywhere in the isthmus. The specimen from Matías Romero has 109 primary and 67 secondary annuli, a length of 400 mm., and a diameter of 19 mm.; the one from Cosamaloapan has 106 primary and 58 secondary annuli, a length of 397 mm., and a diameter of 19 mm. Data on the other specimens were recorded by Dunn (1942:475).

***Bolitoglossa occidentalis* Taylor**

Oaxaca: Río Sarabia (2); Ubero. *Veracruz*: La Oaxaqueña; 14 km. E of Suchil.

The specimens from Oaxaca are only tentatively assigned to *occidentalis*. All are immature and lack maxillary teeth. Taylor (1941:147) stated that the maxillary teeth are absent in young *occidentalis*. One from Río Sarabia is a male with a body-length of 29 mm. and a tail-length of 22 mm. The dorsum is reddish brown streaked with dark gray; the venter is dark gray. Two small

[Pg 50]

individuals (one from Sarabia and one from Ubero) have body-lengths of 19 and 21 mm. and tail-lengths of 10.5 and 11 mm. In life they were pale yellowish tan above with a brown triangular mark on the occiput, but with no middorsal stripe. Both were found in the axils of elephant ear plants (*Xanthosoma*).

This species has been noted by Goodnight and Goodnight (1956:146) on the Atlantic lowlands at Palenque, Chiapas, and by Shannon and Werler (1955:362) at several localities in Los Tuxtlas, Veracruz. I have collected it at Vista Hermosa on the eastern slopes of the Sierra Madre Oriental above Tuxtepec in northern Oaxaca. Both *B. occidentalis* and *B. rufescens* have been reported from Palenque, Chiapas (Taylor and Smith, 1945:547). Reëxamination of specimens from northern Chiapas and Tabasco is needed to verify the sympatric occurrence of these two similar species.

***Bolitoglossa platydactyla* Tschudi**

Oaxaca: La Oaxaqueña; Tolosita (2). *Veracruz*: Acayucan; Cuatotolapam; 25 km. ESE of Jesús Carranza; 14 km. E of Suchil; 2.7 km. N of Tula.

Known only from the Gulf lowlands in the isthmian region, this species has been taken in a variety of habitats within the humid forest area: under outer leaves of banana plants, under a rock along a stream, under a log in a plowed field, and on a reed in a pond at night. Three adult males have an average snout-vent length of 44 mm. and a tail-length of 41 mm. In life the color of the dorsum varied from orange-yellow to orange-tan, usually being more orange on the tail. The iris was a reddish orange.

***Bolitoglossa veracruzis* Taylor**

Veracruz: 35 km. SE of Jesús Carranza (21).

This species is known only from the type series collected at night on a limestone cliff by Walter W. Dalquest. If this salamander is restricted to this type of habitat, it should be found in the region of extensive limestone outcroppings in northern Chiapas and southern Tabasco.

***Rhinophrynus dorsalis* Duméril and Bibron**

Oaxaca: Ixtepec; Limón; Salina Cruz (18); Tehuantepec (57); Tuxtepec (3).
Veracruz: Amatitlán (3); Cosamaloapan (5); Novillero (2); San Lorenzo.

This species inhabits the scrub forests of the Pacific coastal plain and the savannas in southern Veracruz; apparently it does not occur in rainforest. Consequently, its distribution in the isthmus is discontinuous.

PLATE 1



FIG. 1. Savanna about 75 kilometers east of Coatzacoalcos, Veracruz. Photograph by L. C. Stuart.



FIG. 2. Low scrub forest near Alvarado, Veracruz. Photograph by L. C. Stuart.

PLATE 2



FIG. 1. Rainforest near Tolosita, Oaxaca. March, 1956.



FIG. 2. Rainforest along the Río Sarabia, Oaxaca. March, 1956.

PLATE 3



FIG. 1. Transition forest near La Princesa, Oaxaca. March, 1956.

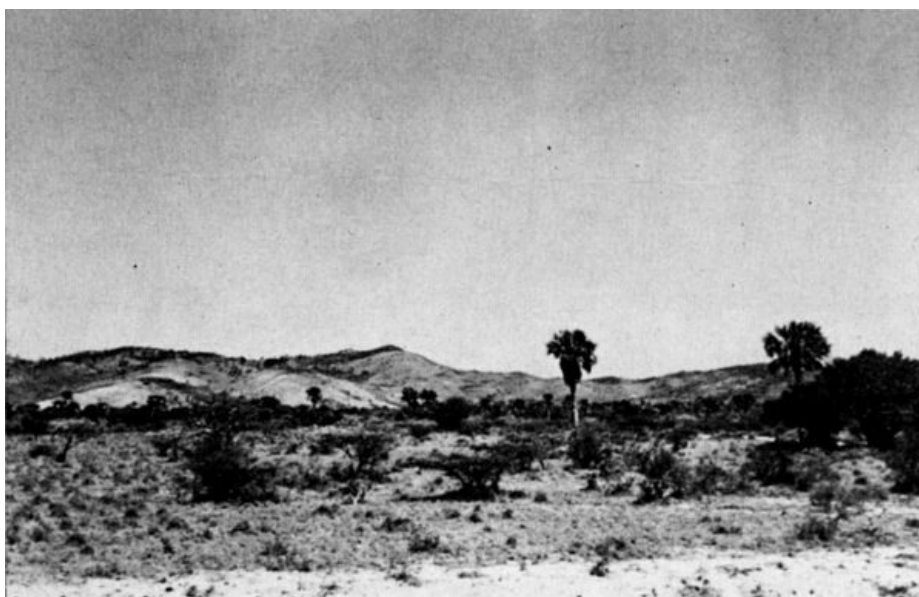


FIG. 2. Palm Savanna on the Plains of Chivela, Oaxaca. March, 1956.

PLATE 4

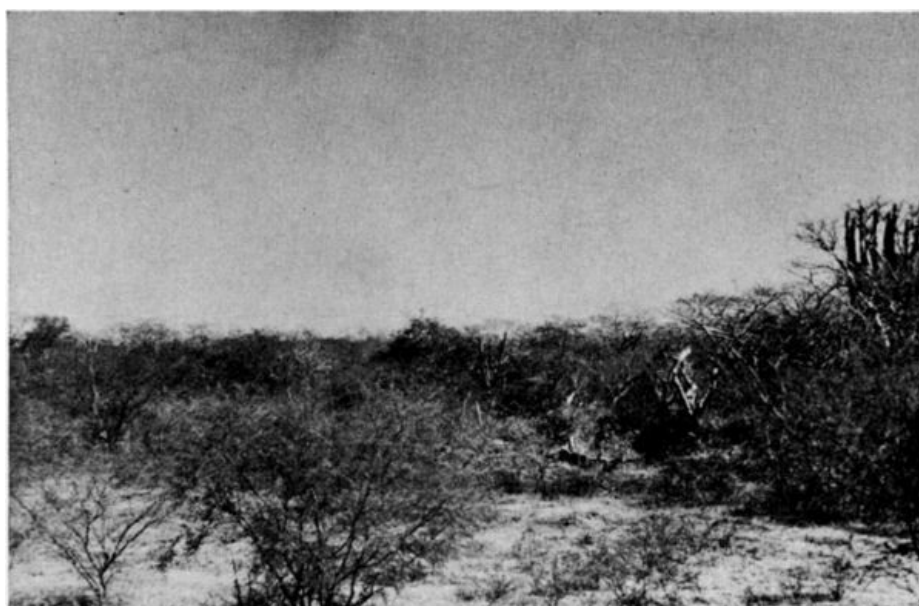


FIG. 1. Scrub forest on the Plains of Tehuantepec in dry season. March, 1956.



FIG. 2. Scrub forest on the Plains of Tehuantepec in rainy season. View toward the north. In the distance is the Continental Divide in the hills of the Isthmus. July, 1958.

PLATE 5



FIG. 1. Low, dense scrub forest near La Ventosa, Oaxaca. July, 1958.

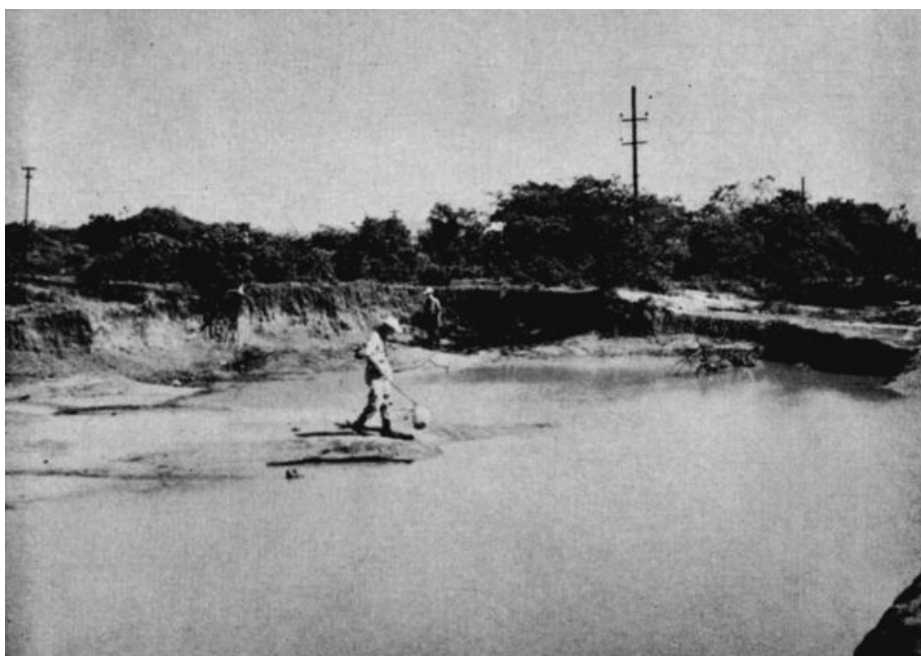


FIG. 2. Temporary pond in scrub forest north of Salina Cruz, Oaxaca. July 7, 1958. *Rhinophrynus dorsalis*, *Bufo marmoratus*, and *Diaglena reticulata* were breeding here the previous night.

PLATE 6



FIG. 1. Calling male of *Rhinophrynus dorsalis*, photographed in a pond north of Santa Cruz, Oaxaca, on July 6, 1958. $\times 2/3$.



FIG. 2. Color pattern variation in two adults of *Bufo canaliferus* from Juchitán, Oaxaca. $\times 2/3$.

PLATE 7



FIG. 1. Calling male of *Engystomops pustulosus*, photographed in a pond west of Tehuantepec, Oaxaca, on July 5, 1956. $\times 2$.



FIG. 2. Foamy egg mass of *Engystomops pustulosus* at the edge of a pond west of Tehuantepec, Oaxaca. July 5, 1956. $\times 3/8$.

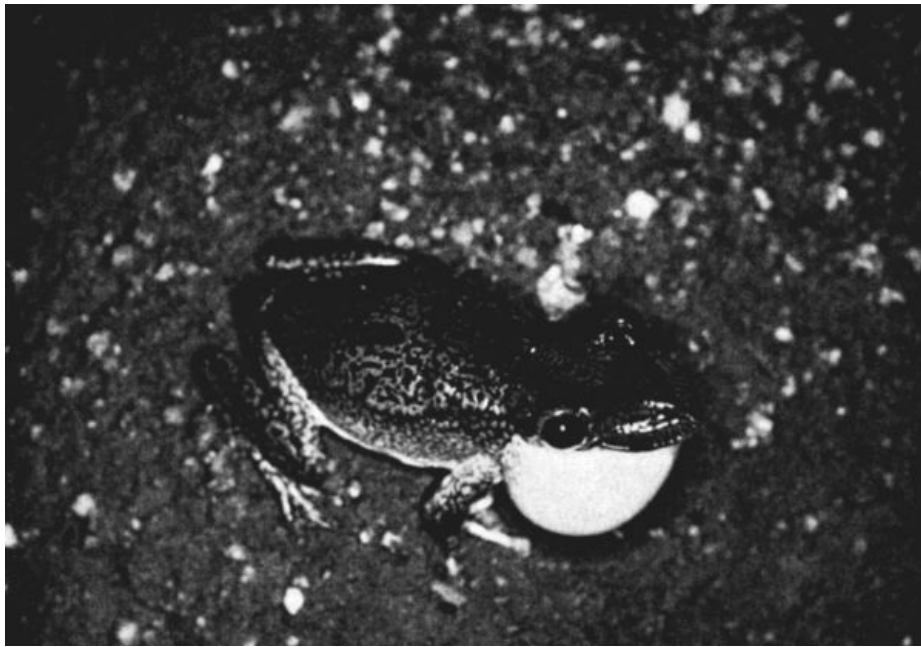


FIG. 1. Calling male of *Diaglena reticulata*, photographed at a pond north of Salina Cruz, Oaxaca, on July 6, 1958. $\times 1/2$.



FIG. 2. Clasping pair of *Diaglena reticulata* at the edge of a pond north of Salina Cruz, Oaxaca, on July 6, 1958. $\times 1$.

Breeding congregations were found after heavy rains at Tehuantepec on July 5, 1956, at Cosamaloapan, Novillero, and Amatitlán on July 26, 1956, and at Salina Cruz on July 6, 1958. The call is a long "worrp" made while the male is floating on the surface of the pond. The small heads, small limbs, and greatly inflated bodies cause the calling males to resemble miniature caricature balloons (Pl. 6, fig. 1). Amplexus is inguinal. These toads are notably wary, even when calling. Often the beam of a flashlight or the slightest disturbance of the water will cause the males to stop calling. The body is deflated with one last nauseous note, and the frog sinks beneath the surface of the water and swims away with short slow kicks of the hind feet.

[Pg 51]

***Bufo canaliferus* Cope**

Oaxaca: Chivela; Salina Cruz; Santa Efigenia; Tapanatepec (6); Tehuantepec (10); Zanatepec (4).

This small toad apparently is restricted to the Pacific lowlands from the Isthmus of Tehuantepec eastward to Guatemala. At Zanatepec on July 13, 1956, males were calling from a flooded field bordered by scrub forest. The call is a rather loud nasal racket. Living individuals vary greatly in coloration. Some have yellowish tan flanks and dorsum and an orange middorsal stripe; others have a pale red dorsum, yellow flanks, and a cream middorsal stripe (Pl. 6, fig. 2).

***Bufo coccifer* Cope**

Oaxaca: Juchitán (5); Tehuantepec.

It is with some degree of hesitancy that these toads are referred to the species *coccifer*. Although these and other specimens from Guerrero and Michoacán display no striking differences from specimens from Costa Rica, Nicaragua, and southeastern Guatemala, the ranges of the

populations are separated by a broad hiatus in Chiapas and Guatemala. Possibly this species has utilized the sub-humid corridor through northern Central America (Stuart, 1954) and subsequently disappeared from the corridor in Guatemala and Chiapas. Specimens of a *coccifer*-like toad collected by Stuart in the vicinity of Jacaltenango, Departamento Huehuetenango, Guatemala, are much larger than either the Central American or Mexican specimens of *coccifer*. A final commitment on the systematic status must await a thorough study of this group of toads.

Males of this species were calling from a grassy rain-pool in open scrub forest at the edge of Juchitán on July 6, 1956. The call is a low "whirrr." The calling males were sitting in the shallow water at the edge of pond, where they were hidden by the grass. None was observed in open water, as is characteristic of calling males of *Bufo canaliferus* and *marmoreus*.

[Pg 52]

Bufo marinus Linnaeus

Oaxaca: Agua Caliente; Guichicovi (3); Mixtequilla; Tolosita (6); Tehuantepec (37); Tuxtepec; Unión Hidalgo. *Veracruz*: Ciudad Alemán (4); Cosamaloapan; Cuatotolapam (19); 20 km. SE of Jesús Carranza (4); 38 km. SE of Jesús Carranza (10); 20 km. NE of Jesús Carranza (4); Novillero.

This large toad is abundant throughout the lowlands of the isthmus. The loud rattling call of males was heard on rainy nights throughout the summer. In March, 1956, several adults were found in a small cave back of a spring at Agua Caliente.

Bufo marmoreus Wiegmann

Oaxaca: Cerro San Pedro (2); Chivela (5); Escurano (3); Juchitán; Salina Cruz (101); Santa Lucía (2); 12 km. S of Santiago Chivela (11); Santo Domingo; Tapanatepec; Tehuantepec (100); Tequisistlán. *Veracruz*: Alvarado; Coatzacoalcos.

This toad is abundant on the Pacific lowlands, where it inhabits both open and dense scrub forest. On the Gulf lowlands its distribution seems to be limited to xeric coastal habitats. Aside from the specimens from Alvarado and Coatzacoalcos, it is known in Veracruz only from Boca del Río (Langebartel and Smith, 1959:27).

The similarity in size of *Bufo marmoreus* and *valliceps* and their almost completely allopatric ranges suggest that the two species may be in competition at any one locality. Nevertheless, both were calling from a small rocky stream south of Santiago Chivela on July 6, 1956.

On the night of July 6, 1958, an estimated 400 toads of this species made up a breeding congregation near Salina Cruz. The site was a shallow muddy pond about 20 × 40 meters located in an area cleared of scrub forest; the banks of the pond were devoid of vegetation (Pl. 5, fig. 2). Breeding in the same pond were *Rhinophrynus dorsalis* and *Diaglena reticulata*. The following morning no more than a dozen *Bufo* were found in the pond, but several individuals were found beneath debris and in small burrows near the pond. On July 7, 1958, large numbers of tadpoles and recently metamorphosed young were in a shallow grassy pool just east of Salina Cruz.

Taylor (1943b:347) referred certain specimens from Tehuantepec to *Bufo perplexus*, a species closely related to *Bufo marmoreus*. Evidence to be presented elsewhere shows that *perplexus* does not occur in the isthmus.

[Pg 53]

Bufo valliceps valliceps Wiegmann

Oaxaca: Guichicovi (2); Matías Romero; 32 km. N of Matías Romero (2); Nueva Raza; Río Sarabia (3); Santa María Chimalapa (14); Santiago Chivela; 12 km. S of Santiago Chivela (5); Santo Domingo (5); Tolosita (7). *Veracruz*: Acayucan (3); Alvarado; Amatitlán; Ayentes; Cosamaloapan (3); Cosoleacaque (6); Cuatotolapam (14); Hueyapan; 20 km. ENE of Jesús Carranza (6); 20 km. S of Jesús Carranza; 25 km. SE of Jesús Carranza (23); 35 km. SE of Jesús Carranza; 60 km. SW of Jesús Carranza (5); La Oaxaqueña (4); Novillero (4); San Lorenzo (5).

Individuals were found in both wet and dry seasons. In the dry season they were most frequently found in rainforest, whereas in the rainy season breeding congregations were found in savannas as well. This toad occurs throughout the Gulf lowlands and on the Pacific slopes and in the Grijalva Valley of Chiapas and Guatemala, but not on the Pacific lowlands of the isthmus.

I have not been able to recognize individuals referable to the race *macrocristatus*. Firschein and Smith (1957:219) described *macrocristatus* from the mountains of eastern Oaxaca and referred to it specimens from the Gulf lowlands of northern Chiapas. None of the present material shows the hypertrophied cranial crests supposedly characteristic of *macroaristatus*, nor do specimens from the isthmus resemble the population in the Grijalva Valley being described by L. C. Stuart, who will discuss the variation in, and the validity of, the named populations of *valliceps*.

Five specimens from San Lorenzo, Veracruz (USNM 123516-20), were identified as *Bufo cristatus* by Smith (1947:408). Firschein (1950:83) redefined the *cristatus* group of *Bufo* and assigned these specimens to *valliceps*.

Eleutherodactylus alfredi Boulenger

Oaxaca: Tolosita (2). *Veracruz*: 35 km. SE of Jesús Carranza (6).

These specimens were collected in rainforest. Shreve (1957:247) pointed out the close

resemblance between *E. alfredi* and *E. conspicuus* from Piedras Negras, Guatemala, and treated them as subspecies. Examination of the specimens from the isthmus, together with seven from central Veracruz and one from Teapa, Tabasco, suggests an even closer relationship. *Eleutherodactylus conspicuus* was diagnosed by Taylor and Smith (1945:567) as differing from *alfredi* "in lacking a tarsal fold, in having shorter hind legs with the tibiotarsal articulation reaching only to the nostril instead of beyond the tip of the snout; the vomerine teeth barely reach the posterior level of the choanae." The specimen from Teapa has the vomerine teeth reaching to the posterior edge of the choanae; in the eight specimens from the isthmus the teeth reach the posterior edge of the choanae in two and to the middle of the choanae in six; in seven specimens from central Veracruz the teeth reach the posterior edge of the choanae in two and to the middle in five. The tibiotarsal articulation extends beyond the tip of the snout in the specimen from Teapa and in two from central Veracruz; in three specimens from the isthmus and in one from central Veracruz it extends only to the nostril; in the others it extends to the snout. The tarsal fold is absent in the specimen from Teapa, in three from the isthmus, and in all those from central Veracruz; it is weakly present in the others.

[Pg 54]

In the light of this evidence there seems to be little justification in recognizing two species or even two subspecies in this group. Consequently, *Eleutherodactylus conspicuus* Taylor and Smith (1945) is here placed in the synonymy of *Eleutherodactylus alfredi* Boulenger (1898), a species with a range extending from Cuautlapan and Potrero Viejo in central Veracruz southward and eastward in forested habitats to western El Petén, Guatemala.

***Eleutherodactylus natator* Taylor**

Veracruz: 35 km. SE of Jesús Carranza (3); 38 km. S of Jesús Carranza; 55 km. SE of Jesús Carranza.

The snout-vent length is 42.0 mm. in a male and averages 59.5 mm. in three adult females. The tarsal fold is low and extends about half the length of the tarsus; the first and second fingers are subequal in length; the tibiotarsal articulation extends beyond the tip of the snout. The patches of vomerine teeth lie between the posterior margins of the choanae. The throat and belly are immaculate, and the soles of the feet are dark. In the isthmus this species can be distinguished from *Eleutherodactylus rugulosus* by less rugose skin on the dorsum and absence of dark ventral mottling.

The specimens reported here extend the known range of *natator* eastward from Camotlán, Oaxaca; northward in Veracruz the species inhabits foothills as far north as Huatusco.

***Eleutherodactylus rhodopis* Cope**

Oaxaca: 30 km. N of Matías Romero; Río Sarabia (5); Tapanatepec (87); Tolosita (6); between Zanatepec and Tapanatepec. *Veracruz*: 25 km. SE of Jesús Carranza; 35 km. SE of Jesús Carranza (2); 22 km. SSW of Jesús Carranza; 20 km. ENE of Jesús Carranza (7); Minatitlán; Tapalapan (5).

For the purposes of the present study I am not recognizing *Eleutherodactylus beati*, *E. dorsoconcolor*, and *E. venustus* as specifically, or even subspecifically distinct from the earlier named *E. rhodopis*. Probably these are mere color varieties of a single species.

[Pg 55]

In the dry season frogs of this species were in humid forests, where they were most frequently found along small streams and in ravines. The species is widespread in the Gulf lowlands, but does not occur on the Plains of Tehuantepec. It does inhabit the Pacific slopes on the foothills of the Sierra Madre de Chiapas, the western part of which extends into eastern Oaxaca near Tapanatepec.

***Eleutherodactylus rugulosus* Cope**

Oaxaca: La Princesa (30); Modelo; Santa Lucía (10); Tapanatepec (26); Tehuantepec (6); Tres Cruces (8). *Veracruz*: Tapalapan (5).

In addition to the specimens from the lowlands of the isthmus, for the purposes of the following discussion, I have included data on two specimens from the southern slopes of the Sierra del Sur in Oaxaca (Mirador and Chacalapa) and on several specimens from Los Tuxtlas in Veracruz (Los Chaneques, 67; Salto de Eyipantla, 35; and San Andrés Tuxtla, 11).

Frogs of the *Eleutherodactylus rugulosus* complex occur from southern Veracruz and Sinaloa southward through Central America. Taylor (1940:401) described *E. vocalis* from Hacienda El Sabino, Michoacán; Taylor and Smith (1945:580) described *E. avocalis* from Tres Cruces, Oaxaca. These have been considered as species distinct from *rugulosus*, which is known to occur in Veracruz, Guerrero, and Chiapas southward into Central America. Although the large number of specimens collected in the isthmus does not aid in defining the ranges of the taxa involved, these specimens do give some idea of the variation in certain characters in a given population.

In specimens from Los Tuxtlas the tarsal fold is well-developed and extends two-thirds to three-fourths the length of the tarsus; the tibiotarsal articulation reaches the nostril and sometimes slightly beyond the tip of the snout. In males the tympanum is nearly equal to the diameter of the eye; in females it is about one-half the diameter of the eye. The posterior surfaces of the thighs are dark brown or black with whitish or cream-colored spots, flecks, or irregular mottling. The tarsal fold is dark; the throat is pale in some individuals, but in most is mottled with dark brown or gray flecks. Individuals from La Princesa near the continental divide in Oaxaca show the same

variation in body proportions and development of the tarsal fold. The posterior surfaces of the thighs are dark brown indistinctly mottled with lighter brown. The throat is dark brown. Specimens from the Pacific slopes of Oaxaca, including the Plains of Tehuantepec, have dark brown thighs mottled with dusty cream. The tibiotarsal articulation extends slightly beyond the tip of the snout in all specimens. In males the tympanum is equal to about two-thirds the diameter of the eye. Duellman (1958b:6) discussed the variation in these characters in populations in Colima, Jalisco, and Michoacán.

[Pg 56]

Until the extent of variation of these characters is known throughout the range of *rugulosus*, the recognition of populations either as species or subspecies seems superfluous. Consequently, I have used the oldest name; this does not necessarily imply, however, that all populations of *rugulosus* (*sensu lato*) are conspecific.

Of the 200 specimens examined, 15 have a middorsal stripe that is red or yellow. The iris varies from a copper to a dark golden color and shines bright red at night. Many of the specimens are juveniles; these were collected in the dry season, at which time they were found beneath rocks along streams, in road culverts where there was some water, and in holes in banks and cliffs.

Microbatrachylus pygmaeus Taylor

Oaxaca: La Princesa (5); Matías Romero (9); Río Sarabia (41); Tolosita (2).
Veracruz: Jesús Carranza; 20 km. ENE of Jesús Carranza.

The specimens listed above vary widely in color patterns; some of the patterns are characteristic of certain named "species": *albolabris*, *imitator*, *lineatissimus*, and *minimus*. The large series from the Río Sarabia contains all of the color patterns; this series was obtained in one small ravine in the rainforest. At least in the isthmian region, this species does not inhabit the Pacific slopes and lowlands.

Syrhophus leprus Cope

Oaxaca: 33 km. N of Matías Romero; Santa Efigenia. *Veracruz*: San Lorenzo.

Although the type locality is stated to be Santa Efigenia on the Pacific slopes of the Sierra Madre de Chiapas in eastern Oaxaca, the type specimen probably came from the northern slopes of the mountains. All other known specimens are from the Gulf slopes and lowlands, and from several localities in Los Tuxtlas. Details concerning specimens from the isthmus and other parts of the range were given by Duellman (1958c:8).

Smith (1947:408) reported a specimen of *Syrhophus verruculatus* Peters from San Lorenzo, Veracruz; he stated that this specimen (USNM 123530) could not be *S. leprus*, because it had a gray belly, nor *S. cystignathoides*, because of the dark and light dorsal coloration. Firschein (1954:57) in his review of the species of *Syrhophus* in eastern México referred the specimen to *S. cystignathoides*. The specimen is in poor condition. Nevertheless, specific determination is possible. Numerous specimens of *S. leprus* from Los Tuxtlas have gray bellies; some have heavier pigmentation than the specimen from San Lorenzo. In preservative the dorsum is dark brown with lighter mottling. There is little doubt that the specimen from San Lorenzo is a *Syrhophus leprus*, an abundant and widespread species in the humid Gulf lowlands of southern México, and not *verruculatus*, if this is a valid species (see Firschein, *op. cit.*:58), and not *cystignathoides*, a species known from San Luis Potosí southward to central Veracruz.

[Pg 57]

Syrhophus pipilans pipilans Taylor

Oaxaca: Cerro Arenal; Cerro San Pedro; 6 km. N of Chivela; 14 km. W of Tehuantepec (2).

In the isthmian region this frog is known only from the Pacific slopes and the Plains of Tehuantepec. Males call from the ground and from trees to heights of about four meters. The call is a single, high, long "peep."

Engystomops pustulosus Cope

Oaxaca: Chivela; La Ventosa (3); Santo Domingo; Tapanatepec (14); Tehuantepec (61); Unión Hidalgo (62). *Veracruz*: Acayucan; Cuatotolapam (7); 10 km. SE of Hueyapan (11).

Large congregations were breeding at Tehuantepec on July 5, at Tapanatepec on July 13, and at Hueyapan on July 24, 1956. The frogs were breeding in open ponds in scrub forest and savanna; none was found in the rainforest. Males call while floating on the water ([Pl. 7, fig. 1](#)); the call is a soft "do-ing, do-ing" with a rising tone on the last note. Numerous individual egg masses were along the bank of a pond near Tehuantepec; one large composite egg mass there had a surface area of about one square meter ([Pl. 7, fig. 2](#)). The large series from Unión Hidalgo was obtained by digging specimens out of a dry sandy river bank in the dry season. Some of the individuals were buried to a depth of 25 centimeters.

In life individuals from the Pacific lowlands were dull brown and gray; those from Acayucan were dark chocolate brown to black with pink or red blotches, forearms, and dorsal stripe. Not all specimens from the Atlantic lowlands are so colored; individuals from Cordoba and Mirador, Veracruz, are like those from Tehuantepec.

[Pg 58]

Leptodactylus labialis Cope

Oaxaca: Agua Caliente; Chivela (2); Matías Romero (12); 33 km. N of Matías Romero (4); Mixtequilla; Santa Efigenia; Tapanatepec; Tehuantepec (38); Tolosita (2); 33 km. W of Zanatepec (49). *Veracruz*: Acayucan (3); Ciudad Alemán; Cuatotolapam (10); Hueyapan; La Oaxaqueña (4); 38 km. SE of Jesús Carranza; 20 km. ENE of Jesús Carranza; Novillero (3); San Lorenzo (2).

Although *Leptodactylus labialis* does not appear to be so abundant as *Leptodactylus melanonotus*, the former was found throughout the lowlands of the isthmus. In the dry season individuals were found along streams, and in the rainy season breeding congregations were found in rain pools, marshes, ponds, and even small puddles. The call is a slow "wort, wort, wort." Males call beneath the water and from beneath rocks and from holes in the ground. The average snout-vent length of eight adult males is 37.2 mm. A completely metamorphosed juvenile obtained at Hueyapan on July 24, 1956, has a snout-vent length of 11 mm.

Leptodactylus melanonotus Hallowell

Oaxaca: Agua Caliente (25); Cerro Arenal (2); Cerro Quiengola (3); Cerro San Pedro (3); Chivela (2); Coyol; Juchitán; Matías Romero (11); Mixtequilla (2); Papaloapan (2); Salazar (9); Salina Cruz; 11 km. S of Santiago Chivela; Tapanatepec (17); Tehuantepec (176); Tolosita; Unión Hidalgo; 27 km. W of Zanatepec (6). *Veracruz*: Acayucan; Cuatotolapam (9); Cosoleacaque; 20 km. ENE of Jesús Carranza (2); 20 km. SE of Minatitlán (2); Novillero; San Lorenzo (6).

This frog is abundant throughout the lowlands of the isthmus, where in the dry season individuals were found along streams and beneath rocks at a spring seepage. In the rainy season males were calling from nearly every bit of standing water. The call is a soft clicking sound resembling that made by striking two small stones together. The average snout-vent length of ten adult males is 41.8 mm. There is considerable variation in the extent of the yellowish brown glandular areas on the belly. Some have none, whereas others have a broad area on the chest, a band along the flanks, and a thin band across the lower abdomen. Individuals collected in the dry season vary in the same fashion as do those collected in the rainy season, at which time they were breeding. The glands are equally well-developed in adults of both sexes, and were present in some juveniles with snout-vent lengths of less than 20 mm. Apparently the development of the glands is not associated with maturity, sex, or size.

Diaglena reticulata Taylor

[Pg 59]

Oaxaca: Cerro Arenal; Chivela; Salina Cruz (26); San Antonio (3); Tehuantepec (2); 8.6 km. W of Tehuantepec (11); Zarcamora.

Breeding congregations of this rare frog were found 8.6 kilometers west of Tehuantepec on July 5, 1956, and at Salina Cruz on July 6, 1958. Both choruses took place immediately after torrential rains. In both instances the frogs were in and about open muddy pools in the scrub forest ([Pl. 5, fig. 2](#)); males called from the bank near the water, and clasping pairs were found only on land ([Pl. 8, figs. 1-2](#)). The call is a loud, nasal "braaa," two to three seconds in duration. Amplexus is axillary.

The dorsal ground color is light yellowish green tending towards olive on the head and fading to yellow on the flanks. The ventral surfaces, including the vocal sac, are white; the iris is golden and flecked with black. The present series agrees well with the description of *reticulata* (based on two specimens) given by Taylor (1942:60). A detailed analysis of variation, comparison with related species, and descriptions of tadpoles are reserved for a future report.

Hyla baudini Duméril and Bibron

Oaxaca: Bisilana; Cerro Quiengola (2); Cerro San Pedro; Coyol; Matías Romero (12); Mixtequilla; Río Sarabia (7); Salazar; San Antonio; 11 km. S of Santiago Chivela; Santo Domingo (3); Tapanatepec (2); Tehuantepec (23); Tolosita. *Veracruz*: Acayucan; Amatitlán; Ciudad Alemán (3); Cosamaloapan (2); Cuatotolapam (15); 10 km. SE of Hueyapan; 20 km. S of Jesús Carranza; 38 km. S of Jesús Carranza (2); 20 km. ENE of Jesús Carranza (4); La Oaxaqueña (2); Minatitlán (2); Naranja (3); Novillero (9); Río de las Playas (2); San Lorenzo (5); Tapalapan (2).

Commonly found on both sides of the isthmus, this large tree frog nearly always is associated with trees; it is not found in the savannas, although it breeds in savannas adjacent to rainforest. It appears to be somewhat more abundant in scrub forest than in rainforest. In the daytime individuals were found under the outer sheaths of banana plants, in the axils of leaves of elephant ears (*Xanthosoma*), in cavities in trees, and on shaded limbs in the forest. Recently metamorphosed individuals having snout-vent lengths slightly more than 20 mm. were found in the latter part of July.

Hyla ebraccata Cope

Oaxaca: Donají (17); 43 km. N of Matías Romero (27); Sarabia (6); Tolosita (3); Ubero (17). *Veracruz*: Aquilera.

This small species was found only in forested areas, where calling males were on bushes and trees around rain pools. The call is a harsh squawk repeated at intervals of 15 to 20 seconds, followed by a minute or more of silence, and then repeated. Clasping pairs were found on bushes

[Pg 60]

and in the water.

The dorsum bears a dark chocolate brown hour glass-shaped mark, which in some individuals is broken into a large mark posteriorly and a smaller triangular one on the head and nape. The dorsal ground color varies from pale cream or ivory to yellow or tan. The intensity of the dorsal pigmentation is subject to rather rapid change. The flanks, hands, and anterior part of the venter are lemon yellow; the feet, thighs, and posterior part of the venter are golden yellow. The dorsal surface of the shank is yellow to tan with chocolate brown bars or spots; the heel is pale yellow. There is a dark brown bar in the loreal region and a dark brown bar extending posteriorly from the eye to a point above the insertion of the forelimb. The iris is a copper color. The toes are completely webbed; the fingers, one-third webbed. There is a small axillary web that is evident when the forelimbs are at right angles to the body. Twenty males have an average snout-vent length of 28.1 mm.; three females, 35.3 mm. There are no nuptial tuberosities on the pollex of breeding males.

This species has been collected at Coyame and Catemaco in Los Tuxtlas and at various localities in Tabasco; it apparently ranges eastward from southern Veracruz, México, in humid forests to El Petén, Guatemala.

Hyla loquax Gaige and Stuart

Oaxaca: Donají (7); 43 km. N of Matías Romero (21). *Veracruz*: 19 km. N of Acayucan (4); Aquilera (3); 8 km. SW of Coatzacoalcos (36); Cuototolapam (11); Naranja (13); San Lorenzo (8).

In the isthmus this species is known only from the humid forests of the Gulf lowlands; it is also known from Boca del Río, Veracruz, and from Teapa and Villa Hermosa, Tabasco.

Calling males were found on aquatic plants above the water in deep ponds in the forest where it was necessary for the collector to wade waist-deep in water to obtain them. The call is a loud "hah-onk." Individuals, when active at night, are yellowish tan above with light olive green spots. The flanks, belly, and vocal sac are yellow, and the anterior and posterior surfaces of the thighs and webbing of the feet are bright orange-red or tomato red. Individuals found during the day are grayish brown with olive markings or reddish brown with black markings. Sleeping individuals are ivory-gray with faint gray markings. The iris is a bright copper color. Fifteen adult males have an average snout-vent length of 41.7 mm.; they have no horny nuptial pads on the pollex.

[Pg 61]

The relationships of this species are with *Hyla rickardsi* Taylor, a species known only from the foothills of the Sierra Madre Oriental in the states of Puebla and Veracruz. The distinguishing characteristics of these species are given in Table 1. Living individuals may be distinguished immediately by the flash colors on the thighs—red in *loquax* and yellow in *rickardsi*. The calls of the two species are distinctly different; that of *rickardsi* is a high-pitched, loud rattle continued for several seconds, notably different from the goose-like honk of *loquax*.

TABLE 1.—COMPARISON OF CERTAIN CHARACTERS IN HYLA LOQUAX AND HYLA RICKARDSI

CHARACTER	<i>loquax</i>	<i>rickardsi</i>
Toe webbing	Full	Three-fourths
Finger webbing	Three-fourths	One-half
Average snout-vent length (♂)	41.7 mm.	37.4 mm.
Tympanum/eye (♂)	63.2%	55.8%
Dorsal leg pattern	Barred	Unmarked
Tarsal fold	Tubercular	Absent
Tarsal stripe	Absent or indistinct	Broad, indistinct, or absent
Dorsolateral stripe	Absent	Present
Light line over anus	Broad	Narrow
Flash colors	Red	Yellow
Iris color	Copper	Bronze

The three specimens from San Lorenzo, Veracruz (USNM 123513-5), were identified as *Hyla rickardsi* by Smith (1947:409). The flash colors have faded in preservative, and so are of no aid in identifying these specimens. Two are adult females with snout-vent lengths of 35 and 39 mm. In possessing a relatively large tympanum and barred thighs, and in lacking a dorsolateral stripe they are typical of *loquax*, but in the amount of webbing on the hands and feet, broad tarsal stripe, and narrow anal stripe they are like *rickardsi*. The third specimen, a juvenile, has a snout-vent length of 25 mm. In coloration it resembles the adults; it has more distinct bars on the limbs. On the basis of geography these specimens should be *loquax*, for the closest known record of *rickardsi* is more than 200 kilometers to the northwest, whereas *loquax* is known from several localities around San Lorenzo.

[Pg 62]

Shannon and Werler (1955:383) described *Hyla axillamembrana* from the lower southern slopes of Los Tuxtlas. The unique type is a small male (27 mm. snout-vent). I have examined the type and find no great differences between it and small specimens of *loquax*. It is not possible to determine the color of the thighs, nor was this information given in the description. *Hyla axillamembrana* is here considered to be a synonym of *Hyla loquax*.

Hyla microcephala martini Smith

Oaxaca: Donají (15); 43 km. N of Matías Romero (19); Río Sarabia (2); Sarabia (11); Tolosita. *Veracruz*: Acayucan (17); Alvarado (41); Aquilera (21); 8 km. SW of Coatzacoalcos (10); Cosoleacaque (26); 10 km. SE of Hueyapan; Naranja (3); Novillero.

This frog is abundant in the Gulf lowlands of the isthmus, where large breeding congregations were found in grassy ponds on the savannas and in openings in the forest. Most frequently males were calling from grasses and reeds in the ponds; many individuals were perched precariously on thin blades as high as one meter above the water. The call is a series of low squeaks.

Individuals found at night were pale yellow above with light brown lines arranged in an irregular pattern on the back, but often forming a cross or an X-shaped mark in the scapular region. There is a brown stripe from the nostril to the eye and thence to the groin. Anteriorly this stripe is bordered above by a thin white or cream-colored line. Numerous small brown flecks are scattered on the back and dorsal surface of the shank. In most specimens there are thin transverse brown bars on the shank. The thighs and undersides of the limbs are golden yellow; the belly and vocal sac are lemon yellow. The iris is yellowish brown. During the day individuals assume a pale reddish tan ground color with darker brown markings. Twenty-five adult males from Alvarado have an average snout-vent length of 24.1 mm.

***Hyla picta* Günther**

Oaxaca: Donají (8); Sarabia (11); Tolosita (15); Ubero (6). *Veracruz*: 19 km. N of Acayucan (4); Alvarado (5); Aquilera; 8 km. SW of Coatzacoalcos; 10 km. SE of Hueyapan (7); Lerdo de Tejada; Tula (3).

Widespread in the forests, scrub, and savannas on the Gulf lowlands of the isthmus, these frogs were found breeding at numerous localities. Males call from grasses and bushes growing in and about ponds. The call is a high-pitched insect-like trill. At night these frogs are pale yellow above; they change to light grayish tan during the day. A dark stripe extends from the nostril to the eye and thence posteriorly to a point between the axilla and groin. Above this dark stripe is a broader white stripe. Scattered on the dorsum are brown flecks or spots; the shanks are marked with poorly-defined cross-bars. The thighs are deep yellow below and paler above with scattered dark flecks. The belly is white, and the vocal sac is yellow. The iris is golden. Twenty males have an average snout-vent length of 21.5 mm.; three females, 24.0 mm.

[Pg 63]

***Hyla robertmertensi* Taylor**

Oaxaca: Tapanatepec (28); 7.5 km. NW of Tapanatepec (38); 7.2 km. WNW of Zanatepec (77).

This species was found in the isthmian region only on the Pacific lowlands at the southern base of the western part of the Sierra Madre de Chiapas. On July 13, 1956, many large choruses were discovered. The calling males were on reeds and thorn scrub in and at the edge of temporary ponds; the call is a cricket-like "creak-creack," quickly followed by a series of notes "creak-eek-eek-eek-eek."

At night the dorsal ground color is pale yellow; this changes to pinkish buff during the day. There is a grayish or brown dark stripe from the nostril to the eye; the stripe continues to the groin. This dark stripe is bordered above by a narrow white stripe. The belly is white, and the vocal sac is yellow. The iris is dull reddish brown. Twenty-five males have an average snout-vent length of 24.7 mm.

***Hyla staufferi* Cope**

Oaxaca: Chivela; Huilotepec (5); Juchitán (4); Matías Romero (4); 25 km. N of Matías Romero; Mixtequilla (4); Río Sarabia (11); 11 km. S of Santiago Chivela; Sarabia (3); Tapanatepec (67); Tehuantepec (66); Tolosita (2); Ubero; Unión Hidalgo; Zanatepec (6). *Veracruz*: Acayucan (7); Alvarado (3); Amatitlán; Aquilera; Ciudad Alemán (3); 8 km. SW of Coatzacoalcos (9); Cosamaloapan (4); Cosoleacaque (8); 10 km. SE of Hueyapan; Lerdo de Tejada; Novillero (6); Tula (2).

This is the only species of small hylid that crosses the isthmus. Calling males were found in and about ponds on the savannas in southern Veracruz, in ponds in open forest in northern Oaxaca (not in forest pools), and in temporary pools in the scrub forest on the Pacific lowlands. Individuals usually called from bushes and reeds in or at the edge of ponds. The call is a short "braaa." Dates of breeding choruses indicate that by the time the other small species of hylids in the Gulf lowlands reach the peak of their breeding season, that of *H. staufferi* is essentially over; no large breeding congregations were found in July. On July 8, 1956, two metamorphosing young were found clinging to blades of grass in a pond; they had snout-vent lengths of 8 and 9 mm. and tail stumps less than 3 mm. in length. Others were found on July 13 and 26. The juveniles are nearly unicolor olive green above and white below.

[Pg 64]

In life the adults vary greatly in color pattern. The dorsal ground color is yellowish tan to olive brown with olive brown or dark brown spots, some of which in certain individuals are connected to form longitudinal dark stripes. On the posterior surface of the thighs are small white flecks. The belly is white, and the vocal sac is a rich yellow. Twenty males have an average snout-vent length of 26.3 mm.; they have no horny nuptial pads. No noticeable differences in either color or body proportions were found between the populations on either side of the isthmus.

Hylella sumichrasti Brocchi

Oaxaca: Cerro Arenal (5); Cerro San Pedro (2); Escurano; La Concepción (41); Portillo Los Nanches (6); San Antonio (16); 11 km. S of Santiago Chivela (18); Santa Lucía (7); Tapanatepec (5); Tehuantepec (8); Tenango (49); Tres Cruces (19).

With the exception of the series from 11 kilometers south of Santiago Chivela, most of these specimens were found in small arboreal bromeliads during the dry season. Males were found along a clear, shallow, rocky stream south of Santiago Chivela on July 6, 1956. The frogs were calling from bushes and rocks in and along the stream. When disturbed, they jumped into the water and floated downstream until they were able to hold onto a rock or other object. The call is a loud "bra-a-ah." In breeding individuals the dorsum is pale yellow; the belly is white, and the vocal sac is yellow. The iris is pale golden yellow. Eighteen males have an average snout-vent length of 25.2 mm. All have dark brown nuptial tuberosities on the pollex.

Certain diagnostic characters of this species as given by Taylor (1943a:50) and Taylor and Smith (1945:598) are in need of revision. *Hylella sumichrasti* has been characterized as having no vocal sac, rarely having vomerine teeth, and as having a relatively smooth throat. The vocal sac in breeding males is quite evident; it is single, median, and when expanded, spherical. The openings into the vocal sac are narrow slits along the inner posterior border of the jaw rami. Of 151 specimens studied, 74 have vomerine ridges between the choanae, and 36 of these have one to three teeth on each ridge. The belly and undersurfaces of the thighs are granular; the throat is only somewhat less so. The granular condition may be correlated with breeding, for specimens obtained from bromeliads in the dry season had rather smooth throats. It seems that the vocal sac atrophies in the non-breeding season. These seasonal changes may account for the diagnoses given by Taylor (*op. cit.*) and Taylor and Smith (*op. cit.*); likewise, since many of the specimens obtained by Smith in the dry season were juveniles and subadults, the development of the vomerine ridges could not be diagnosed properly.

[Pg 65]

The range of this species encompasses the Pacific slopes of the Isthmus of Tehuantepec eastward to the upper Cintalapa Valley and vicinity of Tonalá in western Chiapas. Priscilla Starrett collected tadpoles of *H. sumichrasti* from a stream 19 km. N of Arriaga, Chiapas. These limited observations on the ecology of this frog suggest that it breeds in the fast-moving streams of the Pacific slopes, and that it seeks shelter in arboreal bromeliads during the dry season.

Phrynohyas modesta Taylor and Smith

Oaxaca: Tuxtepec. *Veracruz*: 20 km. S of Jesús Carranza; 20 km. ENE of Jesús Carranza (2); Minatitlán.

I have not collected this species in the isthmus. The locality records indicate that the range is discontinuous (Duellman, 1956:27). The species occurs on the humid Pacific slopes from south-central Chiapas eastward to El Salvador and on the humid Gulf lowlands from southern Veracruz eastward into Tabasco, but is unknown from the dry Pacific slopes and plains in the isthmus.

The acquisition of several specimens of this species in southern Veracruz, Tabasco, and Oaxaca, together with a knowledge of the variation displayed by *Phrynohyas spilomma*, suggests that *modesta* may be a color variety of *spilomma*.

Phrynohyas spilomma Cope

Oaxaca: Tapanatepec (3). *Veracruz*: Amatitlán (12); Chacaltianguis (2); Ciudad Alemán (6); Cosamaloapan; Novillero (3).

Like the preceding species, this frog is unknown from the arid Pacific lowlands of the isthmus; its presence at Tapanatepec, a locality situated in more mesic conditions than prevail on the Plains of Tehuantepec, indicates that it may have a distribution on the Pacific slopes much like that of *P. modesta*. Furthermore, this frog was not detected in the rainforests of the Gulf lowlands; in that region it was found only in scrub forest and savanna.

[Pg 66]

On July 26, 1956, numerous choruses of these frogs were heard between Ciudad Alemán and Tlacotalpan, Veracruz. The call is a loud, nasal "grawl" repeated continuously. The males call from the water. Several clasping pairs were found in shallow grassy ponds amidst the scrub forest. The ground color varies from reddish brown to tan with dark brown dorsal markings. The iris is golden, and the vocal sacs are dark olive brown. After a light shower during the dry season, six individuals were found on the low branches of trees at night near Ciudad Alemán.

Phyllomedusa callidryas taylori Funkhouser

Oaxaca: Donají (9); Sarabia (8); Tolosita (6); Ubero (27). *Veracruz*: Alvarado (7); Aquilera; Berta; Coatzacoalcos (9); 10 km. SE of Hueyapan (5); Naranja (17).

In life this frog presents a striking array of colors. The dorsum varies from pale green to dark olive green; there may be scattered whitish or cream-colored spots on the back. On the flanks are bright yellow to deep cream-colored vertical bars separated by pale blue or purple interspaces. The thighs and undersurfaces of the hind limbs are golden orange; the belly is yellow, and the throat is cream-colored. The iris is crimson; the transparent part of the lower eyelid has golden reticulations. When the frog is resting, the forefeet are folded beneath the throat, and the limbs are folded tightly against the body. In this position and with the eyes closed and head flattened,

this gaudy frog assumes the appearance of a small elliptical green leaf.

Throughout the month of July, 1956, *Phyllomedusa* was breeding in ponds in or adjacent to the rainforest in northern Oaxaca and in southern Veracruz. Only at Alvarado was it found breeding in a grassy pond. Males and females alike were found on bushes and trees in and around the ponds. The call is a single "wank." Amplexing males continue to call, but the call is softer and less nasal in quality. The eggs are encased in pale green gelatin and attached to leaves on branches overhanging the water. Three egg clutches contained 38, 41, and 46 eggs.

***Phyllomedusa dacnicolor* Cope**

Oaxaca: Escurano; Tehuantepec.

Although it is abundant on the Pacific lowlands to the northwest in Guerrero, Michoacán, and Colima, this species is known only from two specimens from Tehuantepec. There is no apparent physical barrier to their distribution in the isthmus; in the Balsas Basin the species lives in a hotter, more arid environment than that at Tehuantepec.

[Pg 67]

***Gastrophryne usta* Cope**

Oaxaca: Santa Efigenia; Tehuantepec (10); 24 km. W of Tehuantepec; Tolosita (2).

Veracruz: Ayentes (6); La Oaxaqueña; Novillero (2); San Lorenzo.

Calling males were found in open scrub forest near Tehuantepec and in savannas near Novillero. The specimens from Tolosita were found under cover in a clearing in the forest (Fugler and Webb, 1957:106).

Specimens from the Pacific lowlands are typical of *Gastrophryne usta gadowi* Boulenger in possessing a thin line on the posterior surface of the thighs and a thin line from the snout to the vent. Of nine specimens from the Gulf lowlands (Ayentes, Novillero, and San Lorenzo), seven have a middorsal line; this is narrow in four and wide in three. Five have the stripes on the thighs. Two specimens from the middle of the isthmus (Tolosita) have no stripes on the thighs; one has a thin middorsal line, and the other has a broad line. The adult males have a black throat; females have a mottled one. The brown reticulations on the bellies of specimens from the Gulf lowlands is bolder than on specimens from the Pacific lowlands. The presence of certain characters supposedly diagnostic of the subspecies *gadowi* (line on dorsum and thighs) in the population of *usta* in southern Veracruz suggests that a redefinition of the ranges of these subspecies will be in order when sufficient material is available to delimit them accurately. For the present I prefer to consider all specimens from the isthmus solely as *Gastrophryne usta* without referring them to subspecies.

***Rana palmipes* Spix**

Oaxaca: Matías Romero (11); 11 km. S of Santiago Chivela; Santo Domingo; Sarabia. *Veracruz*: Coatzacoalcos; Cuatotolapam; 25 km. SE of Jesús Carranza (4); Tlacotalpan (2); Tula.

Adults were found along streams and in marshes in savannas and rainforest. These frogs are wary and difficult to capture, even at night. *Rana palmipes* is another species that has a discontinuous distribution in the isthmus. The species does not occur on the Pacific lowlands of the isthmus, but does occur on the more humid Pacific slopes of Chiapas and Guatemala.

Tadpoles were found in a small sluggish tributary to the Río Sarabia.

***Rana pipiens* Schreber**

[Pg 68]

Oaxaca: Agua Caliente; Cerro Quiengola; Escurano (14); Río Sarabia (2); Tapanatepec (5); Tehuantepec (24). *Veracruz*: Acayucan; Cuatotolapam (15); Jesús Carranza (2); 20 km. S of Jesús Carranza (11); 25 km. SE of Jesús Carranza; 20 km. ENE of Jesús Carranza (10); San Lorenzo (10).

As in most other places in México and northern Central America, this species occurs wherever there is permanent water. Males were heard calling from woodland ponds and from savanna ponds.

SUMMARY

Investigations of the amphibians and their environments in the Isthmus of Tehuantepec have been presented with the aim of gaining an understanding of the present biological and of the historical events responsible for the present patterns of distribution of amphibians in this region.

The Isthmus of Tehuantepec embraces three major environments—savanna, semi-arid scrub forest, and quasi-rainforest. The rainforest presents an environment noticeably different from the other two and has a different amphibian fauna.

Analysis of present patterns of distribution shows that certain species are restricted to the rainforests on the Gulf lowlands; others live only in the semi-arid scrub forests on the Pacific lowlands. A third group of species lives on both the Gulf and Pacific lowlands; most of these species occur only in the scrub forests or savannas on the Gulf lowlands, but some also inhabit the rainforest. In one way or another the isthmus presents a barrier to the distribution of 75 per

cent of the species of amphibians living in the lowlands; it is a greater barrier still to the species inhabiting the highlands on either side.

Present patterns of distribution are attributed to bioclimatic fluctuation in the Pleistocene. In the course of these climatic shifts, tropical environments and their amphibian inhabitants seem to have survived in the isthmian region.

The amphibian fauna of the lowlands of the Isthmus of Tehuantepec consists of 16 genera and 36 species. Systematic studies of all available specimens from the region show that *Eleutherodactylus conspicuus* Taylor and Smith is a synonym of *Eleutherodactylus alfredi* Boulenger and that *Hyla axillamembrana* Shannon and Werler is a synonym of *Hyla loquax* Gaige and Stuart.

LITERATURE CITED

[Pg 69]

BEARD, J. S.

1953. The savanna vegetation of northern tropical America. *Ecol. Mono.*, vol. 23 (2):149-215.

BOULENGER, G. A.

1898. Fourth report on additions to the batrachian collection in the Natural History Museum. *Proc. Zool. Soc. London*, 1898, pp. 473-482, pls. 38-39.

BURT, C. E.

1931. A study of the teiid lizards of the genus *Cnemidophorus* with special reference to their phylogenetic relationships. *Bull. U. S. Nat. Mus.*, No. 154, pp. viii + 286.

CONTRERAS A., A.

1942. Mapa de las provincias climatologias de la Republica Mexicana. México, D. F., Dirección de Geografía, Meteorología e Hidrología, pp. i-xxviii, tables 1-54, 2 maps.

COOKE, C. W.

1945. Geology of Florida. *Florida Geol. Surv., Geol. Bull.*, No. 29:1-339.

DORF, E.

1959. Climatic changes of the past and present. *Contrib. Mus. Paleo. Univ. Michigan*, vol. 13 (8):181-210.

DUELLMAN, W. E.

1956. The frogs of the hylid genus *Phrynohyas* Fitzinger, 1843. *Miscl. Publ. Mus. Zool. Univ. Michigan*, No. 96:1-47, pls. 1-6.

1958a. A monographic study of the colubrid snake genus *Leptodeira*. *Bull. Amer. Mus. Nat. Hist.*, vol. 114:1-152, pls. 1-31.

1958b. A preliminary analysis of the herpetofauna of Colima, Mexico. *Occas. Papers Mus. Zool. Univ. Michigan*, No. 589:1-22.

1958c. A review of the frogs of the genus *Syrrhophus* in western Mexico. *Occas. Papers Mus. Zool. Univ. Michigan*, No. 594:1-15, pls. 1-3.

DUELLMAN, W. E., and SCHWARTZ, A.

1958. Amphibians and reptiles of southern Florida. *Bull. Florida State Mus.*, vol. 3 (5):181-324.

DUNN, E. R.

1942. The American caecilians. *Bull. Mus. Comp. Zool.*, vol. 91 (6):439-540.

DURHAM, J. W., ARELLANO, A. R. V., and PECK, JR., J. H.

1952. No Cenozoic Tehuantepec seaways. *Bull. Geol. Soc. Amer.*, vol. 63:1245.

FIRSCHEIN, I. L.

1950. A new toad from Mexico with a redefinition of the *cristatus* group. *Copeia*, 1950 (2):81-87, pl. 1.

1954. Definition of some little-understood members of the leptodactylid genus *Syrrhophus*, with a description of a new species. *Copeia*, 1954 (1):48-58.

FIRSCHEIN, I. L., and SMITH, H. M.

1957. A high-crested race of toad (*Bufo valliceps*) and other noteworthy reptiles and amphibians from southern Mexico. *Herpetologica*, vol. 13 (3):219-222.

FUGLER, C. M., and WEBB, R. G.

1957. Some noteworthy reptiles and amphibians from the states of Oaxaca and Veracruz. *Herpetologica*, vol. 13 (2):103-108.
- GLOYD, H. K.
1940. The rattlesnakes, genera *Sistrurus* and *Crotalus*. Chicago Acad. Sci. Special Publ., No. 4, vii + 266 pp., pls. 1-31.
- GOIN, C. J. [Pg 70]
1958. Comments upon the origin of the herpetofauna of Florida. *Quart. Jour. Florida Acad. Sci.*, vol. 21 (1):61-70.
- GOLDMAN, E. A.
1951. Biological investigations in Mexico. *Smithsonian Misc. Publ.*, vol. 115, xiii + 476 pp., pls. 1-71.
- GOODNIGHT, C. J., and GOODNIGHT, M. L.
1956. Some observations in a tropical rain forest in Chiapas, Mexico. *Ecology*, vol. 37 (1):139-150.
- GRISCOM, L.
1932. The distribution of bird-life in Guatemala. *Bull. Amer. Mus. Nat. Hist.*, vol. 64:1-439.
1950. Distribution and origin of the birds of Mexico. *Bull. Mus. Comp. Zool.*, vol. 103:341-382.
- HARTWEG, N., and OLIVER, J. A.
1940. A contribution to the herpetology of the Isthmus of Tehuantepec. IV. An annotated list of the amphibians and reptiles collected on the Pacific slope during the summer of 1936. *Misc. Publ. Mus. Zool. Univ. Michigan*, No. 47:1-31.
- HUBBELL, T. H.
1954. Relationships and distribution of *Mycotrupes*. In *The burrowing beetles of the genus Mycotrupes*, Olson, A. L., Hubbell, T. H., and Howden, H. F. *Misc. Publ. Mus. Zool. Univ. Michigan*, No. 84:1-59, pls. 1-8.
- HUTCHINSON, G. E., PATRICK, R., and DEEVEY, E. S.
1956. Sediments of Lake Patzcuaro, Michoacán, Mexico. *Bull. Geol. Soc. Amer.*, vol. 67:1491-1504.
- LANGEBARTEL, D. A., and SMITH, P. W.
1959. Noteworthy records of amphibians and reptiles from eastern Mexico. *Herpetologica*, vol. 15 (1):27-29.
- MARTIN, P. S.
1958. Pleistocene ecology and biogeography of North America. *Zoogeography. Amer. Assoc. Advanc. Sci.*, Publ. No. 51:375-420.
- MARTIN, P. S., and HARRELL, B. E.
1957. The Pleistocene history of temperate biotas in Mexico and eastern United States. *Ecology*, vol. 38:468-480.
- OLIVER, J. A.
1948. The relationships and zoogeography of the genus *Thalerophis* Oliver. *Bull. Amer. Mus. Nat. Hist.*, vol. 92:157-280, pls. 16-19.
- OLSON, E. C., and MCGREW, P. O.
1941. Mammalian fauna from the Pliocene of Honduras. *Bull. Geol. Soc. Amer.*, vol. 52:1219-1244.
- RUTHVEN, A. G.
1912. The amphibians and reptiles collected by the University of Michigan—Walker Expedition in southern Vera Cruz, Mexico. *Zool. Jahrbuch*, vol. 32 (4):295-332, pls. 6-11.
- SCHUCHERT, C.
1935. *Historical geology of the Antillean-Caribbean region*. New York, xxvi + 811 pp.
- SEARS, P. B., FOREMAN, F., and CLISBY, K. H.
1955. Palynology in southern North America. *Bull. Geol. Soc. Amer.*, vol. 66:471-530.
- SHANNON, F. A., and WERLER, J.

1955. Notes on amphibians of the Los Tuxtlas Range of Veracruz, Mexico. *Trans. Kansas Acad. Sci.*, vol. 58 (3):360-386.
- SHREVE, B.
1957. Reptiles and amphibians from the Selva Lacandona. *In* Biological Investigations in the Selva Lacandona, Chiapas, Mexico. Paynter, R. A. (editor). *Bull. Mus. Comp. Zool.*, vol. 116 (4):193-298.
- SMITH, H. M. [Pg 71]
1947. Notes on Mexican amphibians and reptiles. *Jour. Washington Acad. Sci.*, vol. 37:408-412.
- SMITH, H. M., and LAUFE, L. E.
1946. A summary of Mexican Lizards of the genus *Ameiva*. *Univ. Kansas Sci. Bull.*, vol. 31 (2):7-73.
- SMITH, H. M., and TAYLOR, E. H.
1950. An annotated checklist and key to the reptiles of Mexico exclusive of the snakes. *Bull. U. S. Natl. Mus.*, No. 199, v + 253 pp.
- STIRTON, R. A.
1954. Late Miocene mammals from Oaxaca, Mexico. *Amer. Jour. Sci.*, No. 252:634-638.
- STUART, L. C.
1935. A contribution to a knowledge of the herpetology of a portion of the savanna region of central Petén, Guatemala. *Misc. Publ. Mus. Zool. Univ. Michigan*, No. 29:1-56, pls. 1-4.
1941. Studies of Neotropical Colubridae VIII. A revision of the genus *Dryadophis* Stuart, 1939. *Misc. Publ. Mus. Zool. Univ. Michigan*, No. 49:1-106, pls. 1-4.
1951. The herpetofauna of the Guatemalan Plateau, with special reference to its distribution on the southwestern highlands. *Contrib. Lab. Vertebrate Biol., Univ. Michigan*, No. 49:1-71, pls. 1-7.
1954. A description of a subhumid corridor across northern Central America, with comments on its herpetofaunal indicators. *Contrib. Lab. Vertebrate Biol., Univ. Michigan*, No. 65:1-26, pls. 1-6.
1958. A study of the herpetofauna of the Uaxactun-Tikal area of northern El Petén, Guatemala. *Contrib. Lab. Vertebrate Biol., Univ. Michigan*, No. 75:1-30.
- TAYLOR, E. H.
1940. New species of Mexican Anura. *Univ. Kansas Sci. Bull.*, vol. 26 (11):385-405.
1941. New amphibians from the Hobart M. Smith Mexican collections. *Univ. Kansas Sci. Bull.*, vol. 27 (8):141-167.
1942. The frog genus *Diaglena* with a description of a new species. *Univ. Kansas Sci. Bull.*, vol. 28 (4):57-65.
- 1943a. A new *Hylella* from Mexico. *Proc. Biol. Soc. Washington*, vol. 56:49-52.
- 1943b. Herpetological novelties from Mexico. *Univ. Kansas Sci. Bull.*, vol. 29 (8):343-361.
- TAYLOR, E. H., and SMITH, H. M.
1945. Summary of the collections of amphibians made in Mexico under the Walter Rathbone Bacon Traveling Scholarship. *Proc. U. S. Natl. Mus.*, vol. 95:521-613, pls. 18-32.
- TRASK, P. D., PHLEGER, F. B., and STETSON, H. C.
1947. Recent changes in sedimentation in the Gulf of Mexico. *Science*, vol. 106:460-461.
- WEYL, R.
1955. Vestigios de una glaciacion del Pleistoceno en la Cordillera de Talamanca, Costa Rica, A. C. Informe Trimestral, *Inst. Geog. de Costa Rica*, pp. 9-32.
- WHITE, S. E.
1956. Probable substages of glaciation on Ixtaccihuatl, Mexico. *Jour. Geol.*, vol. 64:289-295.
- WILLIAMS, L.
1939. Arboles y arbustos del Istmos de Tehuantepec, Mexico. *Lilloa.*, vol. 4:137-171.

Transmitted May 23, 1960.

UNIVERSITY OF KANSAS PUBLICATIONS MUSEUM OF NATURAL HISTORY

Institutional libraries interested in publications exchange may obtain this series by addressing the Exchange Librarian, University of Kansas Library, Lawrence, Kansas. Copies for individuals, persons working in a particular field of study, may be obtained by addressing instead the Museum of Natural History, University of Kansas, Lawrence, Kansas. There is no provision for sale of this series by the University Library, which meets institutional requests, or by the Museum of Natural History, which meets the requests of individuals. However, when individuals request copies from the Museum, 25 cents should be included, for each separate number that is 100 pages or more in length, for the purpose of defraying the costs of wrapping and mailing.

* An asterisk designates those numbers of which the Museum's supply (not the Library's supply) is exhausted. Numbers published to date, in this series, are as follows:

Vol. 1. Nos. 1-26 and index. Pp. 1-638, 1946-1950.

*Vol. 2. (Complete) Mammals of Washington. By Walter W. Dalquest.
Pp. 1-444, 140 figures in text. April 9, 1948.

Vol. 3. *1. The avifauna of Micronesia, its origin, evolution, and
distribution. By Rollin H. Baker. Pp. 1-359, 16 figures
in text. June 12, 1951.

*2. A quantitative study of the nocturnal migration of birds.
By George H. Lowery, Jr. Pp. 361-472, 47 figures in text.
June 29, 1951.

3. Phylogeny of the waxwings and allied birds. By M. Dale
Arvey. Pp. 473-530, 49 figures in text, 13 tables.
October 10, 1951.

4. Birds from the state of Veracruz, Mexico. By George H.
Lowery, Jr., and Walter W. Dalquest. Pp. 531-649, 7
figures in text, 2 tables. October 10, 1951.

Index. Pp. 651-681.

*Vol. 4. (Complete) American weasels. By E. Raymond Hall. Pp. 1-466,
41 plates, 31 figures in text. December 27, 1951.

Vol. 5. Nos. 1-37 and index. Pp. 1-676, 1951-1953.

*Vol. 6. (Complete) Mammals of Utah, *taxonomy and distribution*. By
Stephen D. Durrant. Pp. 1-549, 91 figures in text, 80
tables. August 10, 1952.

Vol. 7. *1. Mammals of Kansas. By E. Lendell Cockrum. Pp. 1-303, 73
figures in text, 37 tables. August 25, 1952.

2. Ecology of the opossum on a natural area in northeastern
Kansas. By Henry S. Fitch and Lewis L. Sandidge. Pp.
305-338, 5 figures in text. August 24, 1953.

3. The silky pocket mice (*Perognathus flavus*) of Mexico. By
Rollin H. Baker. Pp. 339-347, 1 figure in text. February
15, 1954.

4. North American jumping mice (Genus *Zapus*). By Philip H.
Kruttsch. Pp. 349-472, 47 figures in text, 4 tables.
April 21, 1954.

5. Mammals from Southeastern Alaska. By Rollin H. Baker and
James S. Findley. Pp. 473-477. April 21, 1954.

6. Distribution of Some Nebraskan Mammals. By J. Knox Jones,
Jr. Pp. 479-487. April 21, 1954.

7. Subspeciation in the montane meadow mouse. *Microtus*
montanus, in Wyoming and Colorado. By Sydney Anderson.
Pp. 489-506, 2 figures in text. July 23, 1954.

8. A new subspecies of bat (*Myotis velifer*) from southeastern
California and Arizona. By Terry A. Vaughan. Pp. 507-512.

July 23, 1954.

9. Mammals of the San Gabriel mountains of California. By Terry A. Vaughan. Pp. 513-582, 1 figure in text, 12 tables. November 15, 1954.
10. A new bat (Genus *Pipistrellus*) from northeastern Mexico. By Rollin H. Baker. Pp. 583-586. November 15, 1954.
11. A new subspecies of pocket mouse from Kansas. By E. Raymond Hall. Pp. 587-590. November 15, 1954.
12. Geographic variation in the pocket gopher, *Cratogeomys castanops*, in Coahuila, Mexico. By Robert J. Russell and Rollin H. Baker. Pp. 591-608. March 15, 1955.
13. A new cottontail (*Sylvilagus floridanus*) from northeastern Mexico. By Rollin H. Baker. Pp. 609-612. April 8, 1955.
14. Taxonomy and distribution of some American shrews. By James S. Findley. Pp. 613-618. June 10, 1955.
15. The pigmy woodrat, *Neotoma goldmani*, its distribution and systematic position. By Dennis G. Rainey and Rollin H. Baker. Pp. 619-624. 2 figures in text. June 10, 1955.

Index. Pp. 625-651.

- Vol. 8.
1. Life history and ecology of the five-lined skink, *Eumeces fasciatus*. By Henry S. Fitch. Pp. 1-156, 26 figures in text. September 1, 1954.
 2. Myology and serology of the Avian Family Fringillidae, a taxonomic study. By William B. Stallcup. Pp. 157-211, 23 figures in text, 4 tables. November 15, 1954.
 3. An ecological study of the collared lizard (*Crotaphytus collaris*). By Henry S. Fitch. Pp. 213-274, 10 figures in text. February 10, 1956.
 4. A field study of the Kansas ant-eating frog, *Gastrophryne olivacea*. By Henry S. Fitch. Pp. 275-306, 9 figures in text. February 10, 1956.
 5. Check-list of the birds of Kansas. By Harrison B. Tordoff. Pp. 307-359, 1 figure in text. March 10, 1956.
 6. A population study of the prairie vole (*Microtus ochrogaster*) in northeastern Kansas. By Edwin P. Martin. Pp. 361-416, 19 figures in text. April 2, 1956.
 7. Temperature responses in free-living amphibians and reptiles of northeastern Kansas. By Henry S. Fitch. Pp. 417-476, 10 figures in text, 6 tables. June 1, 1956.
 8. Food of the crow, *Corvus brachyrhynchos* Brehm, in south-central Kansas. By Dwight Platt. Pp. 477-498, 4 tables. June 8, 1956.
 9. Ecological observations on the woodrat, *Neotoma floridana*. By Henry S. Fitch and Dennis G. Rainey. Pp. 499-533, 3 figures in text. June 12, 1956.
 10. Eastern woodrat, *Neotoma floridana*: Life history and ecology. By Dennis G. Rainey. Pp. 535-646, 12 plates, 13 figures in text. August 15, 1956.

Index. Pp. 647-675.

- Vol. 9.
1. Speciation of the wandering shrew. By James S. Findley. Pp. 1-68, 18 figures in text. December 10, 1955.
 2. Additional records and extensions of ranges of mammals from Utah. By Stephen D. Durrant, M. Raymond Lee, and Richard M. Hansen. Pp. 69-80. December 10, 1955.

3. A new long-eared myotis (*Myotis evotis*) from northeastern Mexico. By Rollin H. Baker and Howard J. Stains. Pp. 81-84. December 10, 1955.
4. Subspeciation in the meadow mouse, *Microtus pennsylvanicus*, in Wyoming. By Sydney Anderson. Pp. 85-104, 2 figures in text. May 10, 1956.
5. The condylarth genus *Ellipsodon*. By Robert W. Wilson. Pp. 105-116, 6 figures in text. May 19, 1956.
6. Additional remains of the multituberculate genus *Eucosmodon*. By Robert W. Wilson. Pp. 117-123, 10 figures in text. May 19, 1956.
7. Mammals of Coahuila, Mexico. By Rollin H. Baker. Pp. 125-335, 75 figures in text. June 15, 1956.
8. Comments on the taxonomic status of *Apodemus peninsulae*, with description of a new subspecies from North China. By J. Knox Jones, Jr. Pp. 337-346, 1 figure in text, 1 table. August 15, 1956.
9. Extensions of known ranges of Mexican bats. By Sydney Anderson. Pp. 347-351. August 15, 1956.
10. A new bat (Genus *Leptonycteris*) from Coahuila. By Howard J. Stains. Pp. 353-356. January 21, 1957.
11. A new species of pocket gopher (Genus *Pappogeomys*) from Jalisco, Mexico. By Robert J. Russell. Pp. 357-361. January 21, 1957.
12. Geographic variation in the pocket gopher, *Thomomys bottae*, in Colorado. By Phillip M. Youngman. Pp. 363-384, 7 figures in text. February 21, 1958.
13. New bog lemming (genus *Synaptomys*) from Nebraska. By J. Knox Jones, Jr. Pp. 385-388. May 12, 1958.
14. Pleistocene bats from San Josecito Cave, Nuevo León, México. By J. Knox Jones, Jr. Pp. 389-396. December 19, 1958.
15. New Subspecies of the rodent *Baiomys* from Central America. By Robert L. Packard. Pp. 397-404. December 19, 1958.
16. Mammals of the Grand Mesa, Colorado. By Sydney Anderson. Pp. 405-414, 1 figure in text. May 20, 1959.
17. Distribution, variation, and relationships of the montane vole, *Microtus montanus*. By Emil K. Urban. Pp. 415-511. 12 figures in text, 2 tables. August 1, 1959.
18. Conspecificity of two pocket mice, *Perognathus goldmani* and *P. artus*. By E. Raymond Hall and Marilyn Bailey Ogilvie. Pp. 513-518, 1 map. January 14, 1960.
19. Records of harvest mice, *Reithrodontomys*, from Central America, with description of a new subspecies from Nicaragua. By Sydney Anderson and J. Knox Jones, Jr. Pp. 519-529. January 14, 1960.
20. Small carnivores from San Josecito Cave (Pleistocene), Nuevo León, México. By E. Raymond Hall. Pp. 531-538, 1 figure in text. January 14, 1960.
21. Pleistocene pocket gophers from San Josecito Cave, Nuevo León, México. By Robert J. Russell. Pp. 539-548, 1 figure in text. January 14, 1960.
22. Review of the insectivores of Korea. By J. Knox Jones, Jr., and David H. Johnson. Pp. 549-578. February 23, 1960.

23. Speciation and evolution of the pygmy mice, genus *Baiomys*.
By Robert L. Packard. Pp. 579-670, 4 plates, 12 figures in
text. June 16, 1960.

Index Pp. 671-690.

- Vol. 10. 1. Studies of birds killed in nocturnal migration. By
Harrison B. Tordoff and Robert M. Mengel. Pp. 1-44, 6
figures in text, 2 tables. September 12, 1956.
2. Comparative breeding behavior of *Ammospiza caudacuta* and
A. maritima. By Glen E. Woolfenden. Pp. 45-75, 6 plates,
1 figure. December 20, 1956.
3. The forest habitat of the University of Kansas Natural
History Reservation. By Henry S. Fitch and Ronald R.
McGregor. Pp. 77-127, 2 plates, 7 figures in text, 4
tables. December 31, 1956.
4. Aspects of reproduction and development in the prairie
vole (*Microtus ochrogaster*). By Henry S. Fitch. Pp.
129-161, 8 figures in text, 4 tables. December 19, 1957.
5. Birds found on the Arctic slope of northern Alaska. By
James W. Bee. Pp. 163-211, pls. 9-10, 1 figure in text.
March 12, 1958.
6. The wood rats of Colorado: distribution and ecology. By
Robert B. Finley, Jr. Pp. 213-552, 34 plates, 8 figures
in text, 35 tables. November 7, 1958.
7. Home ranges and movements of the eastern cottontail in
Kansas. By Donald W. Janes. Pp. 553-572, 4 plates, 3
figures in text. May 4, 1959.
8. Natural history of the salamander, *Aneides hardyi*. By
Richard F. Johnston and Schad Gerhard. Pp. 573-585.
October 8, 1959.
9. A new subspecies of lizard, *Cnemidophorus sacki*, from
Michoacán, México. By William E. Duellman. Pp. 587-598,
2 figures in text. May 2, 1960.
10. A taxonomic study of the Middle American Snake, *Pituophis*
deppei. By William E. Duellman. Pp. 599-610, 1 plate, 1
figure in text. May 2, 1960.

Index Pp. 611-626.

- Vol. 11. 1. The systematic status of the colubrid snake, *Leptodeira*
discolor Günther. By William E. Duellman. Pp. 1-9, 4
figs. July 14, 1958.
2. Natural history of the six-lined racerunner, *Cnemidophorus*
sexlineatus. By Henry S. Fitch. Pp. 11-62, 9 figs., 9
tables. September 19, 1958.
3. Home ranges, territories, and seasonal movements of
vertebrates of the Natural History Reservation. By Henry
S. Fitch. Pp. 63-326, 6 plates, 24 figures in text, 3
tables. December 12, 1958.
4. A new snake of the genus *Geophis* from Chihuahua, Mexico.
By John M. Legler. Pp. 327-334, 2 figures in text.
January 28, 1959.
5. A new tortoise, genus *Gopherus*, from north-central
Mexico. By John M. Legler. Pp. 335-343. April 24, 1959.
6. Fishes of Chautauqua, Cowley and Elk counties, Kansas. By
Artie L. Metcalf. Pp. 345-400, 2 plates, 2 figures in
text, 10 tables. May 6, 1959.
7. Fishes of the Big Blue River Basin, Kansas. By W. L.
Minckley. Pp. 401-442, 2 plates, 4 figures in text, 5

tables. May 8, 1959.

8. Birds from Coahuila, México. By Emil K. Urban. Pp. 443-516. August 1, 1959.
9. Description of a new softshell turtle from the southeastern United States. By Robert G. Webb. Pp. 517-525, 2 pls., 1 figure in text, August 14, 1959.
10. Natural history of the ornate box turtle, *Terrapene ornata ornata* Agassiz. By John M. Legler. Pp. 527-669, 16 pls., 29 figures in text. March 7, 1960.

Index will follow.

- Vol. 12. 1. Functional morphology of three bats: *Eumops*, *Myotis*, *Macrotus*. By Terry A. Vaughan. Pp. 1-153, 4 plates, 24 figures in text, July 8, 1959.
2. The ancestry of modern Amphibia: a review of the evidence. By Theodore H. Eaton, Jr. Pp. 155-180, 10 figures in text. July 10, 1959.
 3. The baculum in microtine rodents. By Sydney Anderson. Pp. 181-216, 49 figures in text. February 19, 1960.
 4. A new order of fishlike Amphibia from the Pennsylvanian of Kansas. By Theodore H. Eaton, Jr., and Peggy Lou Stewart. Pp. 217-240, 12 figures in text. May 2, 1960.

More numbers will appear in volume 12.

- Vol. 13. 1. Five natural hybrid combinations in minnows (Cyprinidae). By Frank B. Cross and W. L. Minckley. Pp. 1-18. June 1, 1960.
2. A distributional study of the amphibians of the isthmus of Tehuantepec, México. By William E. Duellman. Pp. 19-72, pls. 1-8, 3 figs. August 16, 1960.

More numbers will appear in volume 13.

Transcriber's Notes

Page [26](#): Changed "19. Cosaleacaque" to "19. Cosoleacaque".

Page [30](#): Changed "Brysonima crassifolia" to "Byrsonima crassifolia".

Page [34](#): Changed "long. 95' 29°;" to "long. 95° 29'".

Page [35](#): Changed "Matías Romera" to "Matías Romero".

Page [47](#): Changed "kown" to "known".

Pages [50](#) and [59](#): Changed "axills" to "axils".

[Plate 1, Fig. 2](#): Changed "Veracuz" to "Veracruz".

Page [53](#): Changed "valadity" to "validity".

Page [67](#): Changed "refering" to "referring".

Page [68](#): Changed "survided" to "survived".

Page [71](#): Changed "subhimid" to "subhumid" and "Amerca" to "America".

Moved University of Kansas [Publications list](#) to end of report.

Vol. 9, No. 12: Changed pages from "363-387" to "363-384".

Vol. 10, No. 10: Changed pages from "599-612" to "599-610".

Updated editions will replace the previous one—the old editions will be renamed.

Creating the works from print editions not protected by U.S. copyright law means that no one owns a United States copyright in these works, so the Foundation (and you!) can copy and distribute it in the United States without permission and without paying copyright royalties. Special rules, set forth in the General Terms of Use part of this license, apply to copying and distributing Project Gutenberg™ electronic works to protect the PROJECT GUTENBERG™ concept and trademark. Project Gutenberg is a registered trademark, and may not be used if you charge for an eBook, except by following the terms of the trademark license, including paying royalties for use of the Project Gutenberg trademark. If you do not charge anything for copies of this eBook, complying with the trademark license is very easy. You may use this eBook for nearly any purpose such as creation of derivative works, reports, performances and research. Project Gutenberg eBooks may be modified and printed and given away—you may do practically ANYTHING in the United States with eBooks not protected by U.S. copyright law. Redistribution is subject to the trademark license, especially commercial redistribution.

START: FULL LICENSE
THE FULL PROJECT GUTENBERG LICENSE
PLEASE READ THIS BEFORE YOU DISTRIBUTE OR USE THIS WORK

To protect the Project Gutenberg™ mission of promoting the free distribution of electronic works, by using or distributing this work (or any other work associated in any way with the phrase “Project Gutenberg”), you agree to comply with all the terms of the Full Project Gutenberg™ License available with this file or online at www.gutenberg.org/license.

Section 1. General Terms of Use and Redistributing Project Gutenberg™ electronic works

1.A. By reading or using any part of this Project Gutenberg™ electronic work, you indicate that you have read, understand, agree to and accept all the terms of this license and intellectual property (trademark/copyright) agreement. If you do not agree to abide by all the terms of this agreement, you must cease using and return or destroy all copies of Project Gutenberg™ electronic works in your possession. If you paid a fee for obtaining a copy of or access to a Project Gutenberg™ electronic work and you do not agree to be bound by the terms of this agreement, you may obtain a refund from the person or entity to whom you paid the fee as set forth in paragraph 1.E.8.

1.B. “Project Gutenberg” is a registered trademark. It may only be used on or associated in any way with an electronic work by people who agree to be bound by the terms of this agreement. There are a few things that you can do with most Project Gutenberg™ electronic works even without complying with the full terms of this agreement. See paragraph 1.C below. There are a lot of things you can do with Project Gutenberg™ electronic works if you follow the terms of this agreement and help preserve free future access to Project Gutenberg™ electronic works. See paragraph 1.E below.

1.C. The Project Gutenberg Literary Archive Foundation (“the Foundation” or PGLAF), owns a compilation copyright in the collection of Project Gutenberg™ electronic works. Nearly all the individual works in the collection are in the public domain in the United States. If an individual work is unprotected by copyright law in the United States and you are located in the United States, we do not claim a right to prevent you from copying, distributing, performing, displaying or creating derivative works based on the work as long as all references to Project Gutenberg are removed. Of course, we hope that you will support the Project Gutenberg™ mission of promoting free access to electronic works by freely sharing Project Gutenberg™ works in compliance with the terms of this agreement for keeping the Project Gutenberg™ name associated with the work. You can easily comply with the terms of this agreement by keeping this work in the same format with its attached full Project Gutenberg™ License when you share it without charge with others.

1.D. The copyright laws of the place where you are located also govern what you can do with this work. Copyright laws in most countries are in a constant state of change. If you are outside the United States, check the laws of your country in addition to the terms of this agreement before downloading, copying, displaying, performing, distributing or creating derivative works based on this work or any other Project Gutenberg™ work. The Foundation makes no representations concerning the copyright status of any work in any country other than the United States.

1.E. Unless you have removed all references to Project Gutenberg:

1.E.1. The following sentence, with active links to, or other immediate access to, the full Project Gutenberg™ License must appear prominently whenever any copy of a Project Gutenberg™ work (any work on which the phrase “Project Gutenberg” appears, or with which the phrase “Project Gutenberg” is associated) is accessed, displayed, performed, viewed, copied or distributed:

This eBook is for the use of anyone anywhere in the United States and most other parts of the world at no cost and with almost no restrictions whatsoever. You may

copy it, give it away or re-use it under the terms of the Project Gutenberg License included with this eBook or online at www.gutenberg.org. If you are not located in the United States, you will have to check the laws of the country where you are located before using this eBook.

1.E.2. If an individual Project Gutenberg™ electronic work is derived from texts not protected by U.S. copyright law (does not contain a notice indicating that it is posted with permission of the copyright holder), the work can be copied and distributed to anyone in the United States without paying any fees or charges. If you are redistributing or providing access to a work with the phrase “Project Gutenberg” associated with or appearing on the work, you must comply either with the requirements of paragraphs 1.E.1 through 1.E.7 or obtain permission for the use of the work and the Project Gutenberg™ trademark as set forth in paragraphs 1.E.8 or 1.E.9.

1.E.3. If an individual Project Gutenberg™ electronic work is posted with the permission of the copyright holder, your use and distribution must comply with both paragraphs 1.E.1 through 1.E.7 and any additional terms imposed by the copyright holder. Additional terms will be linked to the Project Gutenberg™ License for all works posted with the permission of the copyright holder found at the beginning of this work.

1.E.4. Do not unlink or detach or remove the full Project Gutenberg™ License terms from this work, or any files containing a part of this work or any other work associated with Project Gutenberg™.

1.E.5. Do not copy, display, perform, distribute or redistribute this electronic work, or any part of this electronic work, without prominently displaying the sentence set forth in paragraph 1.E.1 with active links or immediate access to the full terms of the Project Gutenberg™ License.

1.E.6. You may convert to and distribute this work in any binary, compressed, marked up, nonproprietary or proprietary form, including any word processing or hypertext form. However, if you provide access to or distribute copies of a Project Gutenberg™ work in a format other than “Plain Vanilla ASCII” or other format used in the official version posted on the official Project Gutenberg™ website (www.gutenberg.org), you must, at no additional cost, fee or expense to the user, provide a copy, a means of exporting a copy, or a means of obtaining a copy upon request, of the work in its original “Plain Vanilla ASCII” or other form. Any alternate format must include the full Project Gutenberg™ License as specified in paragraph 1.E.1.

1.E.7. Do not charge a fee for access to, viewing, displaying, performing, copying or distributing any Project Gutenberg™ works unless you comply with paragraph 1.E.8 or 1.E.9.

1.E.8. You may charge a reasonable fee for copies of or providing access to or distributing Project Gutenberg™ electronic works provided that:

- You pay a royalty fee of 20% of the gross profits you derive from the use of Project Gutenberg™ works calculated using the method you already use to calculate your applicable taxes. The fee is owed to the owner of the Project Gutenberg™ trademark, but he has agreed to donate royalties under this paragraph to the Project Gutenberg Literary Archive Foundation. Royalty payments must be paid within 60 days following each date on which you prepare (or are legally required to prepare) your periodic tax returns. Royalty payments should be clearly marked as such and sent to the Project Gutenberg Literary Archive Foundation at the address specified in Section 4, “Information about donations to the Project Gutenberg Literary Archive Foundation.”
- You provide a full refund of any money paid by a user who notifies you in writing (or by e-mail) within 30 days of receipt that s/he does not agree to the terms of the full Project Gutenberg™ License. You must require such a user to return or destroy all copies of the works possessed in a physical medium and discontinue all use of and all access to other copies of Project Gutenberg™ works.
- You provide, in accordance with paragraph 1.F.3, a full refund of any money paid for a work or a replacement copy, if a defect in the electronic work is discovered and reported to you within 90 days of receipt of the work.
- You comply with all other terms of this agreement for free distribution of Project Gutenberg™ works.

1.E.9. If you wish to charge a fee or distribute a Project Gutenberg™ electronic work or group of works on different terms than are set forth in this agreement, you must obtain permission in writing from the Project Gutenberg Literary Archive Foundation, the manager of the Project Gutenberg™ trademark. Contact the Foundation as set forth in Section 3 below.

1.F.

1.F.1. Project Gutenberg volunteers and employees expend considerable effort to identify, do

copyright research on, transcribe and proofread works not protected by U.S. copyright law in creating the Project Gutenberg™ collection. Despite these efforts, Project Gutenberg™ electronic works, and the medium on which they may be stored, may contain “Defects,” such as, but not limited to, incomplete, inaccurate or corrupt data, transcription errors, a copyright or other intellectual property infringement, a defective or damaged disk or other medium, a computer virus, or computer codes that damage or cannot be read by your equipment.

1.F.2. LIMITED WARRANTY, DISCLAIMER OF DAMAGES - Except for the “Right of Replacement or Refund” described in paragraph 1.F.3, the Project Gutenberg Literary Archive Foundation, the owner of the Project Gutenberg™ trademark, and any other party distributing a Project Gutenberg™ electronic work under this agreement, disclaim all liability to you for damages, costs and expenses, including legal fees. YOU AGREE THAT YOU HAVE NO REMEDIES FOR NEGLIGENCE, STRICT LIABILITY, BREACH OF WARRANTY OR BREACH OF CONTRACT EXCEPT THOSE PROVIDED IN PARAGRAPH 1.F.3. YOU AGREE THAT THE FOUNDATION, THE TRADEMARK OWNER, AND ANY DISTRIBUTOR UNDER THIS AGREEMENT WILL NOT BE LIABLE TO YOU FOR ACTUAL, DIRECT, INDIRECT, CONSEQUENTIAL, PUNITIVE OR INCIDENTAL DAMAGES EVEN IF YOU GIVE NOTICE OF THE POSSIBILITY OF SUCH DAMAGE.

1.F.3. LIMITED RIGHT OF REPLACEMENT OR REFUND - If you discover a defect in this electronic work within 90 days of receiving it, you can receive a refund of the money (if any) you paid for it by sending a written explanation to the person you received the work from. If you received the work on a physical medium, you must return the medium with your written explanation. The person or entity that provided you with the defective work may elect to provide a replacement copy in lieu of a refund. If you received the work electronically, the person or entity providing it to you may choose to give you a second opportunity to receive the work electronically in lieu of a refund. If the second copy is also defective, you may demand a refund in writing without further opportunities to fix the problem.

1.F.4. Except for the limited right of replacement or refund set forth in paragraph 1.F.3, this work is provided to you ‘AS-IS’, WITH NO OTHER WARRANTIES OF ANY KIND, EXPRESS OR IMPLIED, INCLUDING BUT NOT LIMITED TO WARRANTIES OF MERCHANTABILITY OR FITNESS FOR ANY PURPOSE.

1.F.5. Some states do not allow disclaimers of certain implied warranties or the exclusion or limitation of certain types of damages. If any disclaimer or limitation set forth in this agreement violates the law of the state applicable to this agreement, the agreement shall be interpreted to make the maximum disclaimer or limitation permitted by the applicable state law. The invalidity or unenforceability of any provision of this agreement shall not void the remaining provisions.

1.F.6. INDEMNITY - You agree to indemnify and hold the Foundation, the trademark owner, any agent or employee of the Foundation, anyone providing copies of Project Gutenberg™ electronic works in accordance with this agreement, and any volunteers associated with the production, promotion and distribution of Project Gutenberg™ electronic works, harmless from all liability, costs and expenses, including legal fees, that arise directly or indirectly from any of the following which you do or cause to occur: (a) distribution of this or any Project Gutenberg™ work, (b) alteration, modification, or additions or deletions to any Project Gutenberg™ work, and (c) any Defect you cause.

Section 2. Information about the Mission of Project Gutenberg™

Project Gutenberg™ is synonymous with the free distribution of electronic works in formats readable by the widest variety of computers including obsolete, old, middle-aged and new computers. It exists because of the efforts of hundreds of volunteers and donations from people in all walks of life.

Volunteers and financial support to provide volunteers with the assistance they need are critical to reaching Project Gutenberg™’s goals and ensuring that the Project Gutenberg™ collection will remain freely available for generations to come. In 2001, the Project Gutenberg Literary Archive Foundation was created to provide a secure and permanent future for Project Gutenberg™ and future generations. To learn more about the Project Gutenberg Literary Archive Foundation and how your efforts and donations can help, see Sections 3 and 4 and the Foundation information page at www.gutenberg.org.

Section 3. Information about the Project Gutenberg Literary Archive Foundation

The Project Gutenberg Literary Archive Foundation is a non-profit 501(c)(3) educational corporation organized under the laws of the state of Mississippi and granted tax exempt status by the Internal Revenue Service. The Foundation’s EIN or federal tax identification number is 64-6221541. Contributions to the Project Gutenberg Literary Archive Foundation are tax deductible to the full extent permitted by U.S. federal laws and your state’s laws.

The Foundation's business office is located at 809 North 1500 West, Salt Lake City, UT 84116, (801) 596-1887. Email contact links and up to date contact information can be found at the Foundation's website and official page at www.gutenberg.org/contact

Section 4. Information about Donations to the Project Gutenberg Literary Archive Foundation

Project Gutenberg™ depends upon and cannot survive without widespread public support and donations to carry out its mission of increasing the number of public domain and licensed works that can be freely distributed in machine-readable form accessible by the widest array of equipment including outdated equipment. Many small donations (\$1 to \$5,000) are particularly important to maintaining tax exempt status with the IRS.

The Foundation is committed to complying with the laws regulating charities and charitable donations in all 50 states of the United States. Compliance requirements are not uniform and it takes a considerable effort, much paperwork and many fees to meet and keep up with these requirements. We do not solicit donations in locations where we have not received written confirmation of compliance. To SEND DONATIONS or determine the status of compliance for any particular state visit www.gutenberg.org/donate.

While we cannot and do not solicit contributions from states where we have not met the solicitation requirements, we know of no prohibition against accepting unsolicited donations from donors in such states who approach us with offers to donate.

International donations are gratefully accepted, but we cannot make any statements concerning tax treatment of donations received from outside the United States. U.S. laws alone swamp our small staff.

Please check the Project Gutenberg web pages for current donation methods and addresses. Donations are accepted in a number of other ways including checks, online payments and credit card donations. To donate, please visit: www.gutenberg.org/donate

Section 5. General Information About Project Gutenberg™ electronic works

Professor Michael S. Hart was the originator of the Project Gutenberg™ concept of a library of electronic works that could be freely shared with anyone. For forty years, he produced and distributed Project Gutenberg™ eBooks with only a loose network of volunteer support.

Project Gutenberg™ eBooks are often created from several printed editions, all of which are confirmed as not protected by copyright in the U.S. unless a copyright notice is included. Thus, we do not necessarily keep eBooks in compliance with any particular paper edition.

Most people start at our website which has the main PG search facility: www.gutenberg.org.

This website includes information about Project Gutenberg™, including how to make donations to the Project Gutenberg Literary Archive Foundation, how to help produce our new eBooks, and how to subscribe to our email newsletter to hear about new eBooks.