

**The Project Gutenberg eBook of Scientific American, Vol. XLIII.—No. 1.
[New Series.], July 3, 1880, by Various**

This ebook is for the use of anyone anywhere in the United States and most other parts of the world at no cost and with almost no restrictions whatsoever. You may copy it, give it away or re-use it under the terms of the Project Gutenberg License included with this ebook or online at www.gutenberg.org. If you are not located in the United States, you'll have to check the laws of the country where you are located before using this eBook.

Title: Scientific American, Vol. XLIII.—No. 1. [New Series.], July 3, 1880

Author: Various

Release date: January 3, 2012 [EBook #38482]

Language: English

Credits: Produced by Juliet Sutherland, Lesley Halamek, and the
Online Distributed Proofreading Team at <http://www.pgdp.net>

*** START OF THE PROJECT GUTENBERG EBOOK SCIENTIFIC AMERICAN, VOL. XLIII.
—NO. 1. [NEW SERIES.], JULY 3, 1880 ***

Transcriber's Note

Readers using some IE browsers may need to use 'Compatibility View'.

The [Errata](#) are at the end of the book.

(Corrections are also indicated, in the text, by a dotted line underneath the correction.
Scroll the mouse over the word and the original text will appear.)



SCIENTIFIC AMERICAN

**A WEEKLY JOURNAL OF PRACTICAL INFORMATION,
ART, SCIENCE, MECHANICS, CHEMISTRY, AND
MANUFACTURES.**

NEW YORK, July 3, 1880.

Vol. XLIII.—No. 1. [NEW SERIES.]

\$3.20 per Annum [POSTAGE PREPAID.]

Contents:

(Illustrated articles are marked with an asterisk.)

1	Agricultural inventions	1
40	Aspirator and compressor*	11
38	Astronomical notes	11
25	Baby elephant takes a bath	7
22	Bath, shower, portable, new*	6
11	Boiler explosions, prevention of*	4

37	Canal boat, improved	10
17	Carpetings, etc., printing gold on	5
30	Chloral hydrate, simple test for	7
13	Chloroforming during sleep	5
34	Corn magnets	10
14	Dipper, watering, improved*	4
29	Drowned, perseverance with the	7
15	Electric lamp, improved*	5
25	Elephant, baby, takes a bath	7
36	Engineering inventions	10
6	Epidemic, strange, a	2
33	Exhibition, international, Sydney*	8
11	Explosions, boiler, prevention of*	4
39	Fires in New York	11
8	Fogs, navigation in*	3
16	Fruit, preserving app. for*	5
3	Gas machine, Maxim's*	1
3	Gas making, simple process*	1
20	Genessee Falls, utilization of	5
33	Horology, report of judges*	8
33	International exhibition, Sydney*	8
1	Inventions, agricultural	1
36	Inventions, engineering	10
24	Inventions, mechanical	7
12	Inventions, miscellaneous	4
42	Inventions, new	11
9	Iron, effect of age on quality	3
15	Lamp, electric, improved*	5
23	Leadville mines and railroads*	6
34	Magnets, corn	10
35	Materials, resistance of, exp. on	10
3	Maxim's gas machine*	1
24	Mechanical inventions	7
31	Natural history notes	7
8	Navigation in fogs*	3
7	Oil tanks, cannonading of	3
18	Ore separator, Edison	5
41	Photoglyptic process, new	11
26	Phyllirhoe Bucephala*	7
32	Ruggles, S. P	7
22	Shower bath, portable, new*	6
19	Slate washer, novel*	5
2	Specimen, rare, lost	1
5	Steamer, little, remarkable	2
10	Steamers, large, collision between	3
21	Stevens Institute of Technology	5
33	Sydney Industrial Exhibition*	8
28	Tree growth, force of*	7
27	Trees and shrubs, care of	7
19	Washer, slate, novel*	5
4	Watches, Am., superiority of	2
14	Watering dipper, improved*	5

AGRICULTURAL INVENTIONS.

Mr. Sterling A. Millard, of Clayville, N. Y., has invented a scythe blade that contains much less weight of metal and possesses equal or greater strength than the ordinary scythe blades. It is made in the usual manner from what is termed by scythe makers a "scythe rod," and is wrought and shaped in such form that a proper thickness is left to serve as the back of the blade. A longitudinal auxiliary rib or supplementary back is formed on the blade, which stiffens the scythe without requiring the same weight of metal as those of the usual construction.

Mr. George C. Winslow, of Kalamazoo, Mich., has patented an improvement in spring

harrow teeth, which consists generally in hinging the harrow tooth in the forward end of a rectangular frame bolted to the harrow bar, and combining therewith a spring, which at its back end is clamped to the harrow bar by the same bolts which secure the rectangular frame, and which spring then curves upward and forward, and then down through the slot or opening of the rectangular frame, and is jointed at its extremity, near the bottom of the harrow tooth, so that its tension serves to throw the harrow tooth forward, but allows it to yield to obstruction.

A Rare Specimen Lost.

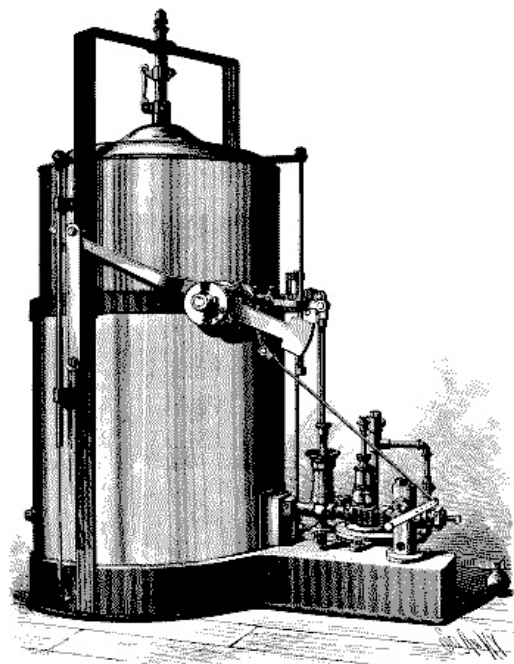
Captain Ingalls, of the schooner *Chalcedony*, has let slip an opportunity to make a small fortune and at the same time settle the long vexed question as to the reality of the elusive and possibly mythical sea serpent. His story, as told in the *Argus*, of Portland, Maine, June 8, runs as follows:

"Last Saturday, about one o'clock in the afternoon, we were slowly sailing past Monhegan, there being very little wind, about twenty miles southwest of the island, when we caught sight of what looked like a large schooner floating bottom up. As the object lay almost dead ahead, we made directly for it, but before we got very close a Cape Ann schooner lay to and sent a boat's crew to inspect what now plainly appeared to be a monstrous carcass of some species or other. We finally hove to, about a ship's length off, and took a leisurely survey of the thing. It was dead, and floated on the water, with its belly, of a dirty brown color, up. Its head was at least twenty feet long, and about ten feet through at the thickest point. About midway of the body, which was, I should guess, about forty feet long, were two fins, of a clear white, each about twelve feet in length. The body seemed to taper from the back of the head down to the size of a small log, distinct from the whale tribe, as the end had nothing that looked like a fluke. The shape of the creature's head was more like a tierce than anything I can liken it to. I have seen almost all kinds of shapes that can be found in these waters, but never saw the like of this before.

Two years ago, off Seguin, I saw shooting through the water a thing which, I think, resembled this creature considerably, but I didn't get close enough to it to say for certain. The men from the Cape Ann schooner got on this dead creature, and one of the boys cut a double shuffle on its belly, which for all the world looked like the bottom of a schooner covered with barnacles and seaweed by the weather. We should have towed the thing to Portland had there been any wind, but as there wasn't, we steered away and left it. What sort of a sea monster this was I can't say for sure, but in my opinion it was the original 'sea serpent,' which has been seen once in a while for years past, and which, when alive, was too swift a swimmer for any sailing vessel to get alongside of."

The report of the captain of the "Cape Ann schooner" will be in order now.

SIMPLE AND CHEAP PROCESS OF GAS MAKING.



MAXIM'S NEW GAS MACHINE.

When a current of air is passed over the surface of gasoline it becomes carbureted or charged with its vapors to saturation. Air thus charged is somewhat heavier than pure air, and when passed through an Argand or bat's wing burner, it burns with a brilliant white flame. Nothing would seem easier than to make a machine that would force a current of air through, over, or on some material saturated with gasoline, and this apparently simple process has led many into attempts to make a successful gas machine. Many fortunes have been spent by the unscientific in the chase after this, to them, *ignis fatuus*. The stumbling block which has wrecked so many enterprises in this line has been the cold produced by the evaporation of the gasoline. One pound of gasoline, in passing from a liquid to a vapor, requires about as much heat as would be required to melt two pounds of cast iron. It is therefore obvious that where no heat is supplied, the gasoline, air, and machine must soon become very cold when any considerable quantity of gas is being made. The heat must come from somewhere, and as none is supplied, it is taken from the apparatus, air, and gasoline,

making them very cold. A beautiful and simple experiment to illustrate this refrigeration can be made as follows: Place a gill of water in a common washbasin, then pour over it one pint of light gasoline; shake the basin, and blow the liquids vigorously, when very soon the basin will become intensely cold—the water will freeze, and may be taken out in the form of a snowball. If the water and basin are hot, and the experiment performed in a hot room or in the sun, it is much more striking.*

* This experiment should not be tried in the vicinity of a gaslight or fire.

This refrigeration operates upon the gas as follows: Air will take up and hold in suspension any volatile liquid in proportion to the square of its temperature, so that when the temperature of the gasoline and air have fallen off one half, the quantity of gasoline in the air has fallen off three quarters, and the light is destroyed. The quality of the gas in such machines varies from a rich smoky flame to a pale blue and blowing flame in a short time. Every change of quality in the liquid, temperature of the apparatus, or number of burners used causes a vexatious change in the quality of the gas. If heat is applied at the right time and in the right quantity it is not so bad, but too much heat, or neglecting to regulate it properly, converts the machine into a still, the condenser of which is the pipes of the building lighted, when danger is added to vexation. About ten years ago a machine was illustrated in these columns that obviated all these troubles; it was the invention of the well known mechanical engineer, Hiram S. Maxim, of this city. His machine was on an entirely new principle, and has since gone into general use. It was intricate and somewhat expensive, but it performed its work well. Messrs. A. T. Stewart & Co. use them largely in their mills and hotels. Mr. Maxim made one of six thousand burner capacity for the Grand Union Hotel, Saratoga Springs, it being the largest gas machine ever built. It has supplied gas of an unvarying quality for six years, and is as good as new to-day.

To reduce the cost as far as possible, Mr. Maxim has designed a new machine on another principle, which we herewith illustrate. Fig. 1 shows the machine in perspective, and Fig. 2 is a sectional view. The vertical cylinder is a common gas holder of sheet brass. It is 36 inches in diameter for a thousand burner machine. The operative parts of the machine are best shown in the sectional view, which represents the portion of the machine called the injector. A is a steam chamber supplied with four or more pounds of steam through the pipe, K. B is the gasoline supply pipe, and C the air supply. D is an index valve. The operation is as follows: Steam being in the chamber, A, the descent of the holder opens the valve, M, and allows the steam to

[Continued on page 4.]

Scientific American.

Established 1845

MUNN & CO., Editors and Proprietors.

PUBLISHED WEEKLY AT

NO. 37 PARK ROW, NEW YORK.


O. D. MUNN. A. E. BEACH.

TERMS FOR THE SCIENTIFIC AMERICAN.

One copy, one year, postage included	\$3 20
One copy, six months, postage included	1 60

Clubs.—One extra copy of THE SCIENTIFIC AMERICAN will be supplied gratis for every club of five subscribers at \$3.20 each; additional copies at same proportionate rate. Postage prepaid.

Remit by postal order. Address MUNN & CO., 37 Park Row, New York.

 To Advertisers.—The regular circulation of the SCIENTIFIC AMERICAN is now **Fifty Thousand Copies** weekly. For 1880 the publishers anticipate a still larger circulation.

The Scientific American Supplement

Is a distinct paper from the SCIENTIFIC AMERICAN. THE SUPPLEMENT is issued weekly.


Every number contains 16 octavo pages, uniform in size with SCIENTIFIC AMERICAN. Terms of subscription for SUPPLEMENT, \$5.00 a year, postage paid, to subscribers. Single copies, 10 cents. Sold by all news dealers throughout the country.

Combined Rates.—The SCIENTIFIC AMERICAN and SUPPLEMENT will be sent for one year, postage free, on receipt of *seven dollars*. Both papers to one address or different addresses, as desired.

The safest way to remit is by draft, postal order, or registered letter.

Address MUNN & CO., 37 Park Row, N. Y.

Scientific American Export Edition.

The SCIENTIFIC AMERICAN Export Edition is a large and splendid periodical, issued once a month. Each number contains about one hundred large quarto pages, profusely illustrated, embracing: (1.) Most of the plates and pages of the four preceding weekly issues of the SCIENTIFIC AMERICAN, with its splendid engravings and valuable information; (2.) Commercial, trade, and manufacturing announcements of leading houses. Terms for Export Edition, \$5.00 a year, sent prepaid to any part of the world. Single copies 50 cents.  Manufacturers and others who desire to secure foreign trade may have large, and handsomely displayed announcements published in this edition at a very moderate cost.

The SCIENTIFIC AMERICAN Export Edition has a large guaranteed circulation in all commercial places throughout the world. Address MUNN & CO., 37 Park Row, New York.

NEW YORK, SATURDAY, JULY 3, 1880.

TABLE OF CONTENTS OF THE SCIENTIFIC AMERICAN SUPPLEMENT No. 235, For the Week ending July 3, 1880.

Price 10 cents. For sale by all newsdealers.

	PAGE
I. ENGINEERING AND MECHANICS. —The New Railway up Mount Vesuvius. 6 illustrations. Plan of road.—General view of mountain and railway.—Side view and end view of passenger car.— Mount Vesuvius Railway.—Map showing railway, mountain, crater, and surrounding country.—The carriage road and railway...	3735
The St. Gothard Tunnel —Notes on the junction of the two galleries. By Dr. CALLADON...	3736
The St. Gothard Tunnel.—Conditions and causes of air currents in the tunnel...	3736
Protection of Ships from Loss by Fire and from Loss by Sinking. Recent improvements in the construction of ships and steamers...	3738
Regenerative Stoves.—A Sketch of their History and Notes on their Use. By JOHN N. HARTMAN. An important paper read at the Pittsburg meeting of the American Institute of Mining Engineers. 1 figure...	3738
Cowper's Hot Blast Stoves. 2 full page illustrations of hot blast stoves for a pair of furnaces.—Plan and cross section of stove.—Plan and cross section of furnace.—Plan and cross section of gas downcomer.—Sectional elevation of stove and downcomer...	3739
Wilson's Lock-up Safety Valve. An important improvement. 10 figures...	3742
Working Low Grade Ores...	3742
The Largest Concrete Tank in England...	3742
II. ELECTRICITY, ETC. —Siemens' Improvements in Electric Railways. 4 figures. Siemens' combined steam and electric railway.— Siemens' electric mail railway...	3743
Difference in the Actions of Positive and Negative Electricity...	3743
Forces Exciting Electricity...	3743
The New Electrical Middlings Purifier. By THOS. B. OSBORNE. 5 figures...	3744
Physical Society, London. Photo—electricity.—Electrometer key. —Air in water.—Steam thermometer...	3745

Atmospheric polarization. Influence of terrestrial magnetism...	3745
III. HYGIENE AND MEDICINE. —Lead Poisoning. Clinical lecture by Dr. WM. PEPPER. Effects of a cosmetic of carbonate of lead. — Symptoms of lead poisoning.—Affinity of lead for nerves and muscles. —Treatment of lead poisoning...	
	3745
Recent Investigations of the Blood...	3746
The Pulse. Lecture on the pulse in health and disease, by Dr. T. A. McBRIDE...	3746
Some Early Symptoms of Insanity...	3747
An Improved Method of Applying Antiseptic Vapors...	3747
Treatment of Phthisis by Inhalation of Borax and Salicylic Acid...	3747
IV. CHEMISTRY AND TECHNOLOGY. —Detection of Starch in Cane Sugar. By P. CASAMAJOR...	
	3747
Double Lever Cement Testing Apparatus. 1 figure...	3748
Prediction of Chemical Elements...	3748
Oil of Sage...	3748
Bronzing Iron...	3748
Rust Preventing Compound...	3748
Argentine Sheep and Wool...	3748
V. NATURAL HISTORY, ETC. —Brain of <i>Limulus Polyphemus</i> . General anatomy of the brain.—Internal structure and histology of the brain.—Comparison of the <i>Limulus</i> brain with the brain of other arthropods...	
	3749
An Unfortunate White Whale. A live whale with a broken neck...	3749
Ethereal Oil of California Bay Tree. By J. M. STILLMAN...	3749
Forest Trees of North America. Prof. Sargent's catalogue (continued from SUPPLEMENT No. 234). Cedars, Red Woods, Firs, Spruces, etc....	3750

THE SUPERIORITY OF AMERICAN WATCHES.

The extract from the report of the judges in horology, at the Sydney International Exhibition, with the diagrams showing the comparative merit of the watches tested, given on other pages of the current issue of *SCIENTIFIC AMERICAN*, cannot fail to interest our readers. There were ten exhibitors, and the inherent and comparative merits of the various exhibits were rated under ten heads on the basis of 100 points "for the highest degree of excellence." There were British, German, French, Swiss, and American competitors; and while the scores of the nine European exhibitors footed up totals ranging from 76 to 686, their average being $389\frac{1}{3}$, the total of the Waltham Watch Company was 981. In detail this remarkable score stood thus: Originality, 98; invention and discovery, 95; utility and quality of material, 95; skill in workmanship, 93; fitness for purpose intended, 100; adaptation to public wants, 100; economy, 100; cost, 100; finish and elegance of cases, 100; timekeeping qualities, 100. Total, 981.

The timekeeping tests were made, as the report points out, by Prof. H. C. Russell, Astronomer Royal at the Sydney Observatory; and it is especially noted that while the majority of the watches tested had been made for exhibition purposes, and specially prepared for that end, the exhibit of the American company was the ordinary and regular product of the factory, such as is finished every day. Another evidence of the superiority of the American system, as emphasized in the report, is the fact that a sixth grade Waltham watch, one of the cheapest tested, showed a better performance than many very expensive and otherwise first class watches of other makes.

The moral of the victory is happily drawn in the following editorial review of the contest and its lessons, by the *Sydney Morning Herald* of April 14, last:

"The report of the judges in horology, which we published on Saturday last, was a document of more than ordinary interest. The slightest glance at it will show that the judges brought no small amount of ability and industry to their task. In many other classes of exhibits judging must, to no small extent, be a matter of opinion. There is no absolute test by which one photograph, for example, or one oil painting can be decided to be superior to another. In exhibits of this kind much must be left to the taste of the critic. Watches and chronometers, on the other hand, can be submitted to the minutest tests. The care and trouble which these require are not small, but the issue is sufficiently important to warrant all the labor which the judges in horology brought to their work. Time-keepers that can be relied upon in all weathers and in all climates, and that are within reach of all classes, are a luxury of no common order, but to a large number of persons they are a necessity also. In these fast days, when everything must be done to time, it is for a variety of purposes found necessary to make accurate divisions, not merely of the days and hours, but of the minutes and seconds also. The verdict which the judges in our Exhibition have pronounced on the Waltham watches is one of which any company might be proud; but the facts on which the verdict is based are as interesting to

the public at large as to the parties immediately concerned. One of the secrets of American progress lies first in the invention of machinery, and then in its application to almost all descriptions of industry. It is the bringing of machinery to every branch of watchmaking that is enabling Americans to beat the world in this as well as in many other things.

"There has been a general belief that a machine-made watch is not to be compared to one that is hand-made, and that on this account the English watch must always hold its own against the American. This belief will have to be given up, if it is not given up already. It has now been established that machinery can be used for the purposes of watchmaking with quite as much success as for those of agriculture. The Americans are showing that they can make better watches than the Swiss or the English, but, what is of equal importance, they are showing that they can make them for less money. The boast of the Yankees is that they can turn out work cheaper and better than anybody else, and that for that reason the world must take their products. It would be difficult to prove that in some departments the boast is wholly without foundation. The American mechanic is paid better than the English mechanic, and yet the work which he turns out can, as a rule, be sold for less. The reason is, not only that he works harder, but that the assistance of machinery enables him to produce the largest result by the smallest amount of labor.

"Mr. Brassey, who believes that the workmen of his own country are equal if not superior to any in the world, maintains that an English mechanic can do more work than an American mechanic. The American really does more, because the inducements to industry are greater, and because he has better machinery. The success of the Waltham Company has furnished a striking instance of this. This company has now not only well-nigh driven foreign watchmaking companies out of America, but it has shown that it can more than compete with them on their own ground. This arises partly from the fact that it can turn out the best work on a large scale, but also from the fact that the principle on which it operates enables it to do all this economically. The Waltham Company claims to have arrived at simplicity, uniformity, and precision in the manufacture of watches, and the report of our judges shows that its claim is well founded. One of its discoveries was that a simple instrument, where simplicity is possible, will cost less and be worth more than a complicated one. Another was that the making of all instruments of the same grade exactly alike, so that the part which belongs to one belongs to the whole, will not only facilitate manufacture, but will greatly economize it. A third was, that these properties of simplicity and interchangeability are the best guarantees of perfect exactitude. The success which the Americans have reached in this as well as in other branches of industry, ought to excite the gratitude rather than the jealousy of the world. Any company or nation that shows how a maximum of efficiency can be reached by a minimum of labor confers a benefit on mankind. This our American cousins have done in other spheres besides that of watchmaking. There are branches of the prosperity of the Americans that are traceable to the extent of their territory and the fertility of their soil; but the triumph of their machinery has been the result of their inventiveness and of their enterprise, and for that reason it points a moral that Australians might profitably observe."



A REMARKABLE LITTLE STEAMER.

There is soon to set sail from London for New York a new and remarkable little steamer of 70 tons gross burden, named the Anthracite, designed to exhibit the advanced engineering ideas of Mr. Loftus Perkins, of England. The distinctive peculiarities of this steamer are the very high steam pressure that she carries—350 to 500 lb. to the square inch, and the small consumption of fuel—one pound of coal per hour per horsepower. A trial trip of this new little boat was lately made of 46 miles, during which 350 lb. steam pressure was steadily maintained, 132 revolutions per minute of propeller, and a speed of eight knots per hour. Other vessels, some of larger size than the above, have been built on the Perkins system, and are running in England. One of them, the yacht Emily, carries 500 lb. boiler pressure. Most of our readers are familiar with Mr. Perkins' system, which has been fully described in our columns. Those who may wish to refer thereto are directed to an interesting article by Mr. Perkins, with engravings, published in the *SCIENTIFIC AMERICAN SUPPLEMENT*, No. 81, July 21, 1877; also to the description of the steam ferry boat, run on this principle, given with three pages of engravings in our *SUPPLEMENT* No. 217.

Engineering theory and practice have for a long time plainly pointed to high steam pressures as one of the surest ways to economy of fuel. Twenty five years ago our ocean steamers carried only 16 lb. pressure to the inch, and burned 5 to 6 lb. of coal per hour per horse power. To-day they are carrying 75 lb. pressure, and burning 2½ to 3 lb. of coal per hour per horse power.

In 1840 the Britannia, one of the finest steamers of the Cunard line plying between this country and England, burned 5,291 lb. of coal for each ton of paying freight she carried, her speed, then considered fast, being 8½ knots per hour. In 1877 the Britannic, speed 15.6 knots per hour, burned only 551 lb. of coal per ton of freight carried.

Although our present steamers are making fast time and are very economical as compared with earlier vessels, still it is a lamentable fact that on the largest and finest of them, furnished with all the latest improvements and best appliances to secure economy, worked by the most careful and intelligent engineers, we succeed in putting into our steam only about one tenth of the heat realized in our boiler fire, the remaining nine-tenths of the heat being lost. Only in proportion as we make our steam hotter, and expanding it more, shall we economize in fuel. In this respect the voyage of the Anthracite is designed by her owners, we presume, to be an eye-opener for steamboat owners, not only in this country but throughout the world. If a little bit of a boat like this, 84 feet long, 16 feet beam, and 10 feet deep, can carry its own coal and water across the Atlantic, with a pressure of 350 to 500 lb. to the inch, and on one pound of coal per horse power, the natural inference is that our great steamers, when fitted with the same system, will realize far better results. The change from three pounds of coal to one pound per horse power means a shaving of two thirds in the coal bill, which is always an enormous item in the expenses of large boats. We ought to add that another peculiarity of the Anthracite is that she uses the same boiler water over and over, only a trifle of fresh water being supplied to make good the slight waste. Our New York steamboat men, who have to pay so dear for Croton water, will be likely to examine the water tank of the Anthracite with interest.



A STRANGE EPIDEMIC.

On the night of Tuesday, June 15, a remarkable epidemic fell upon several towns in western Massachusetts, the town of Adams suffering most severely. Out of a population of 6,000, several hundred—variously estimated from 600 to over 1,000—were prostrated by a disease resembling cholera morbus. The symptoms were first dizziness, then great nausea, followed by vomiting and prolonged purging, and in some cases delirium. A belt of country two or three miles in width and several miles long was thus afflicted, beginning at the west, the whole number of victims being estimated at from 1,200 to 1,500. No deaths are reported.

The cause of the epidemic is not known, but seems most likely to have been atmospheric. For some time the weather had been dry and hot. A heavy local rain fell during the evening, and was followed by or attended with a sudden and great lowering of the temperature. A chilly fog hung over the belt of country invaded by the disease, and a heavy "swampy" odor and taste were in the air.

The malady reached its climax in about twenty-four hours. It was first suspected that the water supply had been somehow poisoned, but many people who had not used the water were prostrated, while others who used it freely escaped. Adams has hitherto been regarded as an exceptionally healthy town, and the surrounding country is high and wholesome.



CANNONADING OF OIL TANKS.

On the morning of Friday, June 11, lightning struck an oil tank belonging to the Tidioute and Titusville Pipe Line, at Titusville, Pa. The fire thus kindled, raged until Sunday night, consuming 200,000 barrels of oil, crude and refined, and destroying property to the amount of \$1,500,000. The most appalling feature in this fire was the successive "boiling over" of oil from burning tanks of the liquid. To empty rapidly a tank containing 20,000 barrels of oil, while the latter is on fire, is no easy matter. The pipes connected with the tanks were utterly inadequate to remove the oil rapidly enough to rob the "boiling over" of its terrors. A happy thought suggested itself on Friday to Mr. D. R. Herron, of the Titusville Battery. Obtaining permission, Mr. Herron brought out one of the Parrott guns of the battery, loaded it with solid shot, and began firing against the three-eighths iron sheets of the distant blazing tank. The first shot glanced, but subsequent volleys pierced the shell of the tank, releasing a large quantity of oil that otherwise would have fed the flames. The battery then moved on to the Emery tank, also burning, and lastly to the Acme tank. Large rents were made in all these, and the liberated oil ran harmlessly down into a stream. This novel target practice greatly shortened the duration of the fire at these tanks, and so drained them that the flames died out for want of fuel, and no "boiling over" resulted.

The peculiar attraction for lightning which these iron oil tanks appear to possess has been several times referred to in our columns. Whenever a thunderstorm passes fairly over one of them it seems to be devoted to destruction. Millions of dollars' worth of property have thus been destroyed. No practical safeguard has yet been suggested.

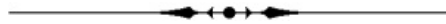
Ordinary buildings, when properly provided with rods that are well grounded in the earth, are comparatively safe from lightning. Structures made of iron and simply resting upon the earth, without rods, are also exempt from electrical damage. Such structures always present a continuous body of conducting material for the free passage of

electricity to earth. Why is it, then, that iron oil tanks form such conspicuous exceptions to our common experience with lightning? Rods put on other structures save them; but rods have been put on oil tanks, masts with rods have surrounded the tanks, but the tanks were exploded by lightning all the same.

We will repeat a possible explanation which we have heretofore given. From every oil tank, according to our theory, there is a constant escape of light hydrocarbon vapor, which forms a permanent cloud or column, rising to a great height above the tanks, far above any rod that could be erected. This vapor rod is a conductor, which the lightning naturally follows, sets on fire the vapor, and explodes the tank.

A column of heated air or vapor rising from a chimney is well known to be a conductor for lightning; the rise of hydrocarbon vapors is illustrated by the balloon.

If the theory we have outlined is correct, the remedy for the electrical explosion of oil tanks is to be found in such a treatment of the oil, or such a construction of tank, as shall prevent any escape of the light vapors.



NAVIGATION IN FOGS.

The disastrous collision of the Sound steamers Narragansett and Stonington was quickly followed by one at sea, by which two great passenger ships escaped instant destruction almost by a hair's breadth.

Shortly after noon, Monday, June 12, the National Line steamship Queen, bound from London to New York, and within 300 miles of her journey's end, ran into the Anchor Line steamship Anchoria, on the way from New York to Glasgow. The bow of the Queen struck the Anchoria on the port side, about twenty feet abaft the foremast, smashing a great hole through the iron hull. Two compartments of the Anchoria filled immediately, but the partitions stood firm, and the other compartments sufficed to keep the vessel afloat. The bow of the Queen was badly crushed, and her forward compartment was flooded. Fortunately the bulkhead proved staunch, and the ship was saved. The fog was very thick, and both ships were going at full speed. It is said that the captain of the Anchoria mistook the whistle of the Queen for that of the Anchoria's companion vessel, the Victoria, which left New York at the same time, and was probably not far away, and before the error was discovered the ships were too close to avoid the catastrophe. Had the sea been rough or the partitions less staunch, both ships must have gone to the bottom almost instantly.

The passengers of the Anchoria were transferred to the Queen, which was least hurt, and the two ships sailed together for New York, arriving Tuesday noon.

These two collisions, coming in such quick succession and imperiling so many lives, give terrible emphasis to the dangers attending navigation in foggy weather. They make very pertinent also the query whether the means now employed for discovering the position and nearness of unseen vessels are at all commensurate with the necessities of the case, or with the means already known, and known to be well calculated to prevent such dangers. In a dense fog the ordinary ship's light is visible scarcely more than a ship's length; and as it proved in the case of the Narragansett and Stonington, the time between thus sighting an approaching vessel and the instant of collision is fatally brief. The recent test of electric headlights for ships in this harbor clearly demonstrated the possibility of projecting a beam of electric light through the densest fog for a thousand feet or more, and through ordinary fogs a distance several times as great.

Except in very rough weather the steam whistle can be heard a long distance, but it is liable to be a treacherous guide. It is not always possible to determine by the ear alone the direction from which a sound comes; and it would seem that a mistake of this nature was made on the Stonington, since the order intended to change her course away from that of the Narragansett only served to precipitate the collision. Had the whistle of the Queen signaled her course it could not have been mistaken for that of a ship sailing in the opposite direction, and the safety of two great floating hotels and their occupants would not have been imperiled thereby.

Means for the better penetration of fogs, for determining the direction of unseen sources of sounds, and for enabling steamers to announce to all within hearing the course they are pursuing, seem therefore to be imperative necessities on shipboard. The first is furnished by the electric headlight, with a system of projection similar to but more efficient than that used on locomotives. The last would be provided by an efficient code of whistle signals to indicate the several points of compass. The second need is supplied by the instrument figured in the accompanying illustration.



PROFESSOR MAYER'S TOPOPHONE.

The aim of the topophone, which was invented and patented by Professor A. M. Mayer, last winter, is to enable the user to determine quickly and surely the exact direction and position of any source of sound. Our figure shows a portable style of the instrument; for use on ship-board it would probably form one of the fixtures of the pilot-house or the "bridge," or both. In most cases arising in sailing through fogs, it would be enough for the captain or pilot to be sure of the exact direction of a fog horn, whistling buoy, or steam whistle; and for this a single aural observation suffices.

Every one has twirled a tuning fork before the ear, and listened to the alternate swelling and sinking of the sound, as the sound waves from one tine re-enforce or counteract those from the other tine. The topophone is based upon the same fact, namely, the power of any sound to augment or destroy another of the same pitch, when ranged so that the sound waves of each act in unison with or in opposition to those of the other.

Briefly described, the topophone consists of two resonators (or any other sound receivers) attached to a connecting bar or shoulder rest. The sound receivers are joined by flexible tubes, which unite for part of their length, and from which ear tubes proceed. One tube, it will be observed, carries a telescopic device by which its length can be varied. When the two resonators face the direction whence a sound comes, so as to receive simultaneously the same sonorous impulse, and are joined by tubes of equal length, the sound waves received from them will necessarily re-enforce each other and the sound will be augmented. If, on the contrary, the resonators being in the same position as regards the source of sound, the resonator tubes differ in length by half the wave length of the sound, the impulse from the one neutralizes that from the other, and the sound is obliterated.

Accordingly, in determining the direction of the source of any sound with this instrument, the observer, guided by the varying intensity of the sound transmitted by the resonators, turns until their openings touch the same sound waves simultaneously, which position he recognizes either by the great augmentation of the sound (when the tube lengths are equal), or by the cessation of the sound, when the tubes vary so that the interference of the sound waves is perfect. In either case the determination of the direction of the source of the sound is almost instantaneous, and the two methods may be successively employed as checks upon each other's report.

It is obvious that with such a help the pilot in a fog need never be long in doubt as to the direction of a warning signal; and if need be he can without much delay, by successive observations and a little calculation, determine, approximately at least, the distance of the sounding body.



EFFECT OF AGE ON THE QUALITY OF IRON.

Professor Bauschinger, in 1878, tested iron taken from a chain bridge built in 1829, and found that fifty years of use had not perceptibly altered its quality—either its strength or its elasticity—as reported at the time of its erection. He also examined metal from another bridge built in 1852, and found that the average quality remained as given by

Von Pauli at the time of its erection.

Professor Thurston, testing pieces of the wire cable of the Fairmount Suspension Bridge, recently taken down at Philadelphia, after about forty years' use, found the iron to have a tenacity and elasticity and a ductility fully equal to the best wire of same size found in the market to-day.

He therefore concludes that iron subjected to strains such as are met with in properly designed bridges does not deteriorate with age.



A COLLISION BETWEEN LARGE PASSENGER STEAMERS.

During a fog near midnight, June 11, two of the large passenger steamers plying on Long Island Sound, Stonington line, between New York and Boston, came in collision, while running at considerable speed. One of the boats, the Narragansett, was struck near the middle, her side cut open, and a smoke-pipe knocked over, which made a down draught through the furnace, driving out a great sheet of burning gas into the cabins and between decks, by which the vessel was set on fire, at the same time the opening in her side caused her to begin to sink. Some three hundred passengers were on board, and a frightful scene of confusion followed. Happily there was a plentiful supply of life-preservers, some life-rafts, and a few life-boats. There was delay in lowering the boats, but the rafts, life-preservers, chairs, and other floatables served to support most of the unfortunate people, who, to escape the flames, were obliged to leap quickly into the water. About fifty lives were lost; the remainder were rescued by boats from another steamer, the New York, also by help sent from the other damaged vessel, the Stonington.

It seems remarkable that so many were saved. This calamity illustrates the necessity for further effort on the part of inventors to discover new and improved means for fog signaling, saving life, preventing the spread of fires, and keeping vessels afloat. Most of the large local steamers that communicate with New York are veritable palaces, built regardless of expense, and supplied with every known reliable appliance for safety; but the occurrence of accidents like this and their disastrous results show that much remains to be done before navigation, even upon smooth waters, can be considered secure.

The life-rafts of the Narragansett seem to have proved more useful than the life-boats in rescuing the drowning people, the rafts being more quickly and easily launched, requiring less skill, etc.

The upperworks of our river and Sound passenger steamers consist at present of a mass of light, dry woodwork, forming cabins that are very comfortable and commodious for travelers, but highly dangerous in case of fire.

The collision of river steamers above described was followed a few hours later by a collision between two great ocean steamers, accounts of which we give in another column.



Honors to an Aged Chemist.

The chemists of Germany are collecting money for the purpose of presenting a gold medal to Prof. Woehler on his eightieth birthday, which will be July 31, 1880. Prof. Woehler is one of the most distinguished as well as the oldest of living chemists. Himself a pupil of old Berzelius, a contemporary of Liebig, and the loved instructor of many of our best chemists, his name is equally respected on both sides of the Atlantic. Profs. Jay and Chandler, of Columbia College, New York city, two of his former pupils, are receiving contributions from those who wish to join in this well deserved memorial.



Perseverance under Difficulties.

A good lesson to young people inclined to exaggerate the hinderances to their success in life, and to think that their chances are too poor to justify honest exertion, is furnished by a young colored man of Columbus, Ohio, F. P. Williams by name, now serving in that city as census enumerator. Several years ago he was run over by a train of cars, his arms being so mutilated that both had to be taken off near the shoulder. Lacking hands he learned to write legibly by holding his pencil between his teeth. He writes quite rapidly, and in his work as enumerator takes an average of 200 names a day.



MAXIM'S NEW GAS MACHINE

[Continued from first page.]

escape through the jet, L. This produces a partial vacuum at L, and draws air in at C. The air and steam pass with great rapidity through the tube, G. The action of the air and steam produces another partial vacuum at N, which draws gasoline in through the pipe, B. The adjustment of the opening is such that one pound of steam draws in air sufficient for two pounds of gasoline. The heat of the steam is taken up by the refrigeration caused by the evaporation of the gasoline, so that at E the compound is carbureted air and cold water. The tube, F, presents the curious phenomenon of being hot at *a* and cold at *b*. In one short piece of tube we have a hot retort and a cold condenser. The supply of gasoline is regulated by the valve, D. The dash pot, H, prevents a too rapid action of the valve, I. Gas of any desired density may be made, and when once adjusted the gas does not vary. The burner used with this machine is made to produce the very best results attainable, and then the gas is regulated to a density and pressure to suit the burner. The nuisance of an adjustable burner is thus obviated.

The holder closes off the supply when full, and lets on a supply when nearly empty. Gasoline has been much improved within a few years. It is now so very cheap that the equivalent of one thousand feet of coal gas of standard quality may be equaled for sixty cents. Where no steam is at hand these machines are run with a small oil burner. They are being made by the Pennsylvania Globe Gas Light Co., 131 Arch St., Philadelphia, Pa., of from 100 to 10,000 burner power.

This machine was patented June 8, 1880.

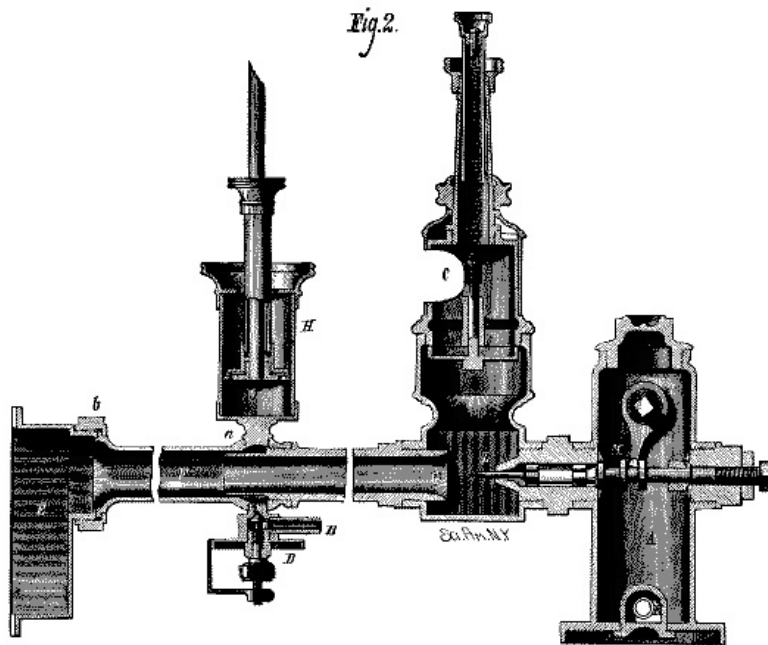


Fig 2.: MAXIM'S GAS MACHINE—SECTION OF INJECTOR

[Return](#)

PREVENTION OF BOILER EXPLOSIONS.

This vexed problem has occupied the minds of engineers and inventors since the introduction of steam as a motive power, and there are several theories of boiler explosions, each having its adherents. Of course there are conditions under which a boiler explosion is involved in no mystery; as, for example, when the water is dangerously low, when the safety valve is of insufficient capacity, or when it is unduly loaded; but there are other cases where an explosion cannot be rationally explained in the light of the well known theories.

Mr. Daniel T. Lawson, of Wellsville, Ohio, has recently patented, in this and several other countries, a device for preventing boiler explosions, which appears practical, and according to the testimony of scientific men the claims of the inventor are well founded.

The inventor, in explaining his invention, says that when water is superheated it becomes as explosive as gunpowder, exploding by bursting into steam from a reduction of pressure. When the engineer opens the throttle valve the cylinder is instantly filled with steam, creating a vacuum to that extent in the boiler. The superheated water then

immediately rises to fill the vacuum, and is met by the valve, instantly cutting off the escape into the cylinder; this causes a concussion on every square inch in the boiler much greater than the regular pressure of the steam. There is abundant reason to believe that it is this concussive action which causes the numerous and mysterious boiler explosions, and which cause is wholly independent of the amount of water in the boiler; in fact, the greater the amount of water in the boiler the more terrific the explosion.

This invention, which is based upon this theory, consists in reducing the concussive strain produced by the impulsive and intermittent escape of steam to the cylinders to an approximately uniform pressure, by rendering the evolution or passage of steam from the water to the steam space approximately constant and independent of the intermittent discharges from the steam space to the cylinder. The means for accomplishing this consist in a boiler constructed with a partition, A, intervening between the water space and the space from which the steam is taken to supply the cylinder, and feeding the steam as it is generated through valves or orifices, B, in the partition, of a smaller size than the port or opening through which the steam passes into the cylinder. By this means the normal steam pressure or steam supply, when thus intermittently or alternately reduced, is restored gradually by reducing the flow from the water space to the steam space, so that the transformation of water into steam is made approximately uniform in spite of the intermittent escape of steam through the cylinders, and the boiler is thus relieved of the constant wear and strain of the concussion.



LAWSON'S IMPROVED STEAM BOILER.

In supplying steam from the water compartment to the steam compartment, the inventor intends using a number of small perforations, not amounting in the aggregate to more than about one twentieth the size of the cylinder port, in connection with a number of small valves to be under control of the engineer, so that the amount of steam required can be readily regulated, yet carefully avoiding the possibility of all, when opened to their utmost capacity, forming as large an opening as the valve through which the cylinder is supplied. A number of small valves and perforations in the partition sheet between the water and steam compartments, will remedy that hitherto very general annoyance of water rising to and through the valves, which is occasioned by pressure of steam upon the surface of the water, and when *one large* valve is opened, the pressure is partly removed from the water immediately under it, consequently the water rises through the valve. A number of small openings for the liberation of steam from the superheated water will remedy this difficulty.



MISCELLANEOUS INVENTIONS.

Mr. Niels C. Larsen, of Sacramento, Cal., has patented a purse or satchel fastening which can be securely locked and present a smooth and unbroken surface without projections.

A combined dental speculum and shield has been patented by Mr. Alfred W. Edwards, of New York city. The object of this invention is to facilitate the performance of dental operations, such as the filling of teeth. It consists in a combined dental speculum, gag, and shield formed of a flaring or bonnet-shaped shell of metal, having a longitudinal slot in its lower side to receive the teeth, and an arched wire attached to its lower part, upon the opposite sides of the forward end of the slot, to rest upon the teeth and support the forward part of the shell.

An improved coupling for the shafts of a wagon, which can be readily fastened to or unfastened from the axle, has been patented by Mr. William W. French, of Stockbridge, Mass. The invention consists in the combination with the axle clip and knuckle joint of a sliding bearer and spring catch to facilitate the opening and closing of the coupling.

Mr. Joseph Kintz, of West Meriden, Conn., has patented an improved process for bronzing iron surfaces, which consists in cleaning and buffing the iron surfaces, then electroplating with copper, then dipping in acid solution, then again buffing, then boiling in a salt of tin solution, and then finishing by subjecting the article to heat until the copper and spelter coatings are fused into bronze.

A simple device for extending the steps of passenger cars, for the convenience of passengers getting in and out of the car, and for protecting at the same time the treads of the permanent steps from sparks, cinders, snow, etc., during the passage of the car from one station to another, has been patented by Mr. Benjamin F. Shelabarger, of Hannibal, Mo.

Mr. Luther C. Baldwin, of Manchester, N. H., has patented a new and improved automatic heat regulator, simple in construction and so arranged as to operate, under the smallest changes of temperature, upon the valves of the source of heat.

An improved cigar lighting stand has been patented by Mr. Joseph Kintz, of West Meriden, Conn. This improvement relates to lamp stands for cigar lighting, and has for its object the production of a stand of ornamental character which may be packed closely for transportation and readily put together for use.

A simple, safe, and efficient device in which light oils may be used as fuel for heating sad irons for domestic use, or for the use of tailors, dressmakers, etc., has been patented by Mr. Harvey L. Wells, of Evansville, Ind. It consists essentially of an iron box divided longitudinally into two chambers, the lower being the combustion chamber and the upper the heating chamber.

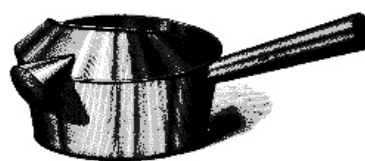
An improvement in electric light has been patented by Mr. Charles J. Van Depoele, of Detroit, Mich. The object of this invention is to automatically regulate the feed of the carbon in electric lights according to the changes of resistance in the current caused by the consumption of the carbon points, so as to prevent flickering and variations in intensity of the light.

Chloroforming during Sleep.

The possibility of chloroforming a person in sleep, without waking him, having been disputed in a recent murder trial, Dr. J. V. Quimby, of Jersey City, was led to test the question experimentally. The results were presented in a paper before the section of medical jurisprudence at the meeting of the American Medical Association a few days ago. Dr. Quimby made arrangements with a gentleman to enter his room when he was asleep and apply chloroform to him. He did this with entire success, transferring the person from natural to artificial sleep without arousing him. He used about three drachms of Squibb's chloroform, and occupied about seven minutes in the operation. The second case was a boy of thirteen who had refused to take ether for a minor operation. Dr. Quimby advised the mother to give the boy a light supper and put him to bed. She did so, and Dr. Quimby, calling when the boy was asleep, administered the chloroform and performed the operation without awakening the boy. The third case was a boy of ten years suffering from an abscess, and the same course was pursued with equal success. Two important inferences may be drawn from these cases, Dr. Quimby said. Minor surgical operations may be done with perfect safety and much more pleasantly than in the ordinary way, and, secondly, a person somewhat skilled in the use of chloroform may enter a sleeping apartment and administer chloroform with evil intentions while a person is asleep. Hence the use of this drug in the hands of a criminal may become an effective instrument in the accomplishment of his nefarious designs.

IMPROVED WATERING DIPPER.

A convenient vessel for watering plants, sprinkling floors, and for other similar purposes is shown in the annexed engraving. It is simply a dipper of the usual form, partly covered at the top by a shield, at the center of which is fixed a sprinkler spout. The utility of this improvement will be recognized without further description. It was recently patented by Mr. R. Harrison, of Columbus, Miss.

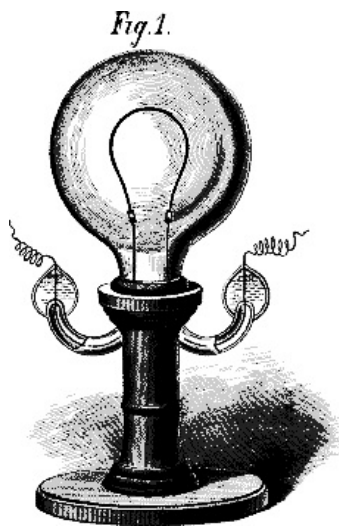


HARRISON'S WATERING DIPPER

IMPROVED ELECTRIC LAMP.

The lamp shown in the engraving will be recognized as an Edison lamp, the vacuum globe and the carbon horseshoe being the principal elements. Mr. John H. Guest, a well known electrical inventor of Brooklyn, N. Y., judging from his own experience in fusing platinum with glass in the manufacture of thermostatic fire alarms, concluded that the principal trouble with the Edison lamp would be the entrance of air around the wires passing through the glass of the vacuum globe, devised a simple plan of sealing the joint between the wires and the glass by means of mercury, thus interposing an effectual barrier to the entrance of air at that point.

The invention is so clearly shown in the engraving that scarcely a word of explanation is



GUEST'S IMPROVED ELECTRIC LAMP,
Fig 1 and Fig 2

necessary. In the lamp shown in Fig. 1, the wires that convey the current to the carbon horseshoe are sealed in the ends of curved glass tubes communicating with the globe, and these joints are inclosed in small globes formed on the ends of the glass tubes and filled with mercury.

In this lamp Mr. Guest has made provision partially or wholly preventing the circulation of air, should any remain in the globe after exhaustion with the air pump. The device by which this is accomplished is simply a small globe connected with the lower portion of the lamp globe by a contracted passage, the theory being that the

cooler and heavier portion of the air will be drawn into the auxiliary globe by its own gravity.

Fig. 2 shows a lamp in which the tubes that support the wires extend downward into the lamp globe. These tubes at their junction with the vacuum globe are fused to the platinum conducting wires, and the tubes act simply as lateral supports to the wires inside the globe, allowing the wires to expand freely lengthwise. The tubes are sealed outside the globe in the manner shown in Fig. 1.

Another improvement made by Mr. Guest consists in inclosing the ends of the platinum wire conductors in the ends of the material of the carbon before it is carbonized, the wire being formed into a loop to increase the conducting surface and to insure a good connection with the carbon.

APPARATUS FOR PRESERVING FRUIT.

The annexed engraving represents a simple apparatus for preserving fruit in its natural state, by means of a partial vacuum. The vessel is especially designed for the purpose, and is provided with an absorbent which takes up whatever moisture may emanate from the fruit. The vessel is preferably made of glass or earthenware, and is provided with a cover having a packing ring and a device for receiving the stems of the fruit. The cover is secured to the vessel by an adjustable screw clamp. In the bottom of the vessel there is an absorbing ring made of burnt or dried clay, which absorbs the moisture escaping from the fruit. The air in the vessel is rarefied either by heat or by the application of an air pump to the opening in the bottom.



FRUIT-PRESERVING APPARATUS.

This apparatus was recently patented by Mr. Carl J. Renz, of Hudson, N. Y.

New Process for Printing Gold and Silver Colors on Carpetings and other Textiles.

(Translated for the *Commercial Bulletin*.)

Gold and silver designs for carpeting and oilcloths have been hitherto prepared in the following manner: The gold or silver were put in leaves or bronze powder on the designs, which were printed with a varnish of linseed oil, or similar adhesive. The bronze thus attached did not possess much firmness, and the method was necessarily expensive. The method recently adopted by Wohlforth is as follows: The bronze powder is united at once to printing material. The liquid silicate of potash, or of oxide of sodium, answers this

purpose. One part, by weight, of gold, silver, or bronze powder, along with two parts of the silicate, will give a print color, which is easily transferable by rollers to paper, oilcloth, and woods and metals. The bronze thus printed dries very rapidly, and cannot be taken off by oil or water, unless they are boiling. It bears light and heat equally well, and especially sulphureted hydrogen, which has such a destructive effect on bronzes put on in the form of powder. It is recommended to thin the mass by an addition of warm water, 10 to 20 per cent, so as to keep it from becoming too hard during the process of printing. An addition of glycerine or sirup, of 5 to 10 per cent, will be even preferable. The bronze color remaining on the printing forms can be taken off by warm water.

The Edison Ore Separator Not New

To the Editor of the Scientific American:

In your issue of June 19, 1880, I notice an illustration of an electro-magnetic ore separator invented by Mr. Edison, and patented June 1, 1880.

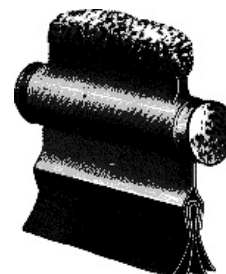
A device absolutely identical with this has been in use for the past ten or fifteen years at the emery works at Chester, Hampden county, Mass. I there saw it in use myself in November, 1876, and was informed, I think by Mr. Ames, that it was not patented, and that no valid patent could be granted upon it by reason of its long continued public use.

My uncle, John S. Williams, of this city, president of the Ore Knob Copper Company, had heard of the machine, and sent me to Chester with a view to purchasing the right to use it at the Ore Knob Copper Works, in Ashe county, North Carolina. On my return to Baltimore I had the magnets constructed by Watts & Co., electricians, on November 24, 1876, for a large machine, similar to the one at Chester, which machine was completed about December 10, 1876, and practically tested at No. 52 Commerce St., Baltimore. It was sent to the Ore Knob Mine about Christmas, 1876, to be used in separating magnetic oxide of iron from the copper ore, and, for aught I know to the contrary, is in use there yet. This is a striking instance of how history repeats itself in inventions. Mr. Edison is doubtless an original inventor of the device, but he most certainly is not the first inventor.

R. D. WILLIAMS.
Baltimore, Md., June, 1880.

NOVEL SLATE WASHER.

Few articles meet with a readier sale or more promptly remunerate the inventor than the class of inventions adapted to the use of children either in their school life or in their amusements. One of these useful little novelties is shown in our engraving. It is a slate washer, consisting of two pieces of metal stamped up so as to form a holder for the sponge at the top and the cloth drier at the bottom. They also form a tubular receptacle containing a supply sponge, which is moistened by removing the corks at the ends.



SMITH'S SLATE WASHER.

This invention was recently patented by Mr. Jacob A. Smith, of Salem, Ohio.

The Utilization of Genesee Falls.

The plan to furnish Rochester, N. Y., with power for manufacturing and for running street cars through the utilization of the falls of the Genesee in compressing air, was described in this paper some weeks ago. All the power of the lower falls, save what is needed to run two wheels for factories already in operation, has been purchased by the inventor of the system, and a promising beginning has been made. According to the Rochester *Union*, a large gang of men are at work building the crib just below the falls on the east side of the river in a cove which seems to have been made by nature for this purpose. This foundation is 100 feet long by 75 feet wide, and will have an average depth of 13 feet. It is being constructed of solid logs of oak timber bolted together, and the center will be filled with stone. On the top of the crib will be erected the derrick, 125 feet high, and the water will pour into it from the top of the falls through the bulkheads at one end of the dam. The stand pipes will run from the top of the derrick to the cylinders

on the crib, which will be in the neighborhood of 500 feet long. The whole machinery will be roofed in. The difficulty in the way of getting the materials to the place, they all having to be lowered over the falls, makes the work of construction somewhat slow. It is expected, however, that the first application of the system to the propulsion of street cars will be possible in September next.

Stevens Institute of Technology.

The commencement exercises took place on June 16 and 17, and were of a very interesting nature. On the 16th President Henry Morton delivered an able address before the graduating class on "Popular Fallacies in Engineering." We intend to publish the address in full in our next week's SUPPLEMENT.

NEW PORTABLE SHOWER BATH.

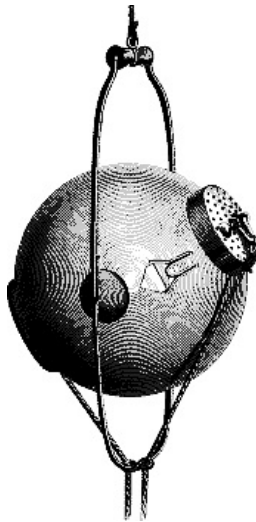


Fig. 1.

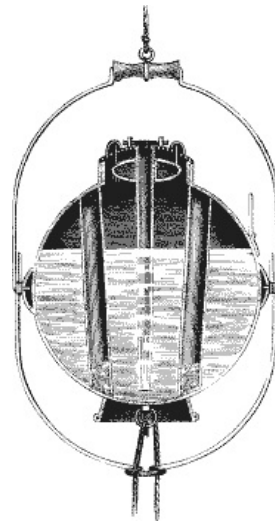


Fig. 2.

VANSANT'S PORTABLE SHOWER BATH. SECTION OF SHOWER BATH.

We give herewith perspective and sectional views of an improved portable shower bath, recently patented by Mr. James E. Vansant, of Covington, Ky. It consists of a spherical vessel, having at the bottom a supporting rim which admits of setting it on the floor when occasion requires. The top is provided with a screw cap, perforated with numerous small holes for discharging water in fine streams. In the center of the cover there is a filling tube, which extends nearly

to the bottom of the vessel. A float is provided to indicate when the vessel is filled, and shot contained in the two side tubes serves as ballast to keep the device either in an upright or inverted position.

The vessel is pivoted in a light jointed frame that admits of hanging it up or setting it down. In use it is tipped by means of the cords attached.

Mines and Railroads of Leadville.

To the Editor of the Scientific American:

Nearly every person interested in geology sets up a theory of his own with regard to the carbonate deposits of Leadville, immediately on arriving in this famous district. There is, however, but one theory which has been generally adopted by scientific men, formulated by W. S. Keyes, General Manager of the Chrysolite Iron and Little Chief Mines, and substantiated by the mute testimony of the fossil remains that fix the geologic data. The theory is substantially as follows:

A shallow sea overspread this entire region. An even bed of limestone, dolomitic, was formed by the myriads of shell-fish that subsisted in this shallow sea. From some natural convulsion the waters flowed off, leaving the sedimentary deposits. Subsequently the porphyritic rock flowed over the surface in a pasty mass, covering the limestone. There then followed two processes of ore making. The first was through the mineralizing action of heated and ore depositing waters, coming up out of the depths, and impregnating and permeating the hanging and foot walls of the contact. No free oxygen was contained in these waters; neither did they carry any chlorides or chlorobromides, wherein consists the present richness of Leadville's ores; but in the first process the ore was entirely in

the form of sulphurets.

The second process was initiated by the uplifting of the mountain ranges to their present height, at which time the diorites, those ore indicators of the globe, uprose through the sedimentary strata. Thus was the original surface of deposit bent and folded, and not unfrequently entirely broken. The surface waters carrying free oxygen and free carbonic acid now penetrated along the contact, and oxidized the sulphurets, which formed free sulphuric acid, giving rise to the sulphates and sulpho-carbonates. The irresistible law of gravity distributed these sulphates, these oxides, and these carbonates in vast bonanzas, that have been the wonder of the world. The fossil trilobites of this region identify it with the silver lead districts of Nevada, Utah, and Mexico. It is not anomalous, but simply richer than its sister regions to the West and South.

The output of ore from the Leadville mines last year (1879) aggregated 122,483 tons, which represents a value of \$11,477,046. That is to say, there was an average yield at \$90 per ton, or just \$31,443.96 each day. On the first day of May of the present year (1880), the returns from thirty-seven of the leading mines gave a total daily output of 899½ tons of ore, yielding, at the low average of \$90 per ton, something like \$80,955 per day. The world's history of silver mining in the past shows nothing like this for so young a camp. Scarcely a month passes without opening up some new and vast carbonate deposits. The territory has not even been thoroughly prospected; and the future yield of the royal metal will far eclipse its past production.

It might not be uninteresting in this connection to give something regarding the sampling and milling of ores. One of the most complete concerns engaged in this business anywhere in the country is that of Augustus R. Meyer & Co. This establishment has grown with the growth and development of this carbonate district. The business was first established as long ago as the year 1877 (before Little Pittsburg was dreamed of). A little log house, a relic of seventeen years previous, was found sufficiently ample for the needs of the business of that period. However, it was not long before additions had to be made and new buildings erected. In the year 1879 the present company was incorporated with a capital stock of \$50,000, and every preparation that money and business sagacity could effect was made to meet the demands of the prosperous era, that has built a mining metropolis 10,240 feet above the sea level, at the base of the great continental divide. As at present constituted the premises of the company comprise seven and one-half acres of ground, upon which six buildings have been erected, including ore houses and crushing and sampling buildings. During the busy season of summer from thirty-five to forty men are employed, who alternate their work in two shifts, day and night. At this season it frequently happens that the ore houses, which hold 1,500 tons, are insufficient for the accommodation of the mineral sent from the mines to be crushed, and large quantities have to be stored outside. In sampling ores from the various mines about Leadville this establishment pursues the most careful methods. The different ores are first deposited in large bins holding from 25 to 100 tons. One-tenth of each load is taken and run through a Dodge crusher, which well adapts it for the furnaces. A fifth of the tenth already indicated is put through heavy rollers, and one half of this finely crushed ore is subjected to the Bucking hammer and powdered to an eighty-sieve grade. One sample of this powder, consisting of a fourth, is given to the miner, two samples are kept for reference, and the other is sent to the assayer, who takes his "assay ton," upon which the company buys and sells. The capacity of the works are all the way from 80 to 150 tons per day. For samples, \$7.50 is charged for silver and lead per ton, and \$10 per ton for gold; but in large quantities a less charge is made. In job crushing, the market value of silver is allowed, with from five to ten per cent deducted. The Meyer works enjoy an excellent patronage from the best mines of the camp, including such as the Chrysolite, Carbonate, Vulture, Duncan, Matchless, Climax, Morning Star, Crescent, and J. D. Dana, some of which have all their crushing done at these sampling works.



AUGUSTUS R. MEYER AND COMPANY'S ORE MILL.

In order to furnish better transportation facilities for the mineral of this district, and to emancipate it from the freight embargo that has virtually fettered its commerce, citizens of Leadville have determined to construct a broad gauge railway down the Arkansas Valley to Pueblo. This will enable Leadville merchants to ship goods through from the East without breaking bulk, and lay them down in their warehouses as cheaply as the same commodities could be laid down in Denver. This will insure Leadville the control of the business of the Gunnison country, whose mineral developments are spoken of in the highest terms. Propositions from Eastern railroad contractors have already been received, preliminary surveys have been made, and \$200,000 guaranteed to the stock subscription. It now seems to be only a question of what method to pursue in constructing the road.

Growing out of the broad gauge movement, to some extent, two or three narrow gauge enterprises have been organized. One is projected from Leadville to Salt Lake City, following the carbonate belt, as shown in Hayden's Geological Map, around through the Eagle River, Roaring Fork, and White River Agency districts, into Utah. Such men as H. A. W. Tabor and C. B. Rustin stand at the head of this project. Another narrow gauge road is organized to be built into the "Ten-Mile" and Breckenridge districts, where the famous Robinson Mine is located. Should the broad gauge be built this summer to Pueblo, there is little doubt but that narrow gauges would ramify out from Leadville into every mineral bearing gulch that was found accessible.

W.
Leadville, May 6, 1880.

MECHANICAL INVENTIONS.

Mr. William B. Hickman, of Sterling, Kan., has patented a swage to be used in welding the triangular bar which is to form the flange of a plow point or share to the body of the same.

Mr. Lucius S. Edleblute, of Cincinnati, O., has recently patented what he calls the rubber cushioned spoke and hub. This is an improvement in the class of vehicle wheel hubs having an elastic band or annular portion which surrounds the journal box and on which the butts of the spokes rest, so that the wheel is rendered elastic and more durable, also comparatively noiseless when running on stony pavements, roads, or streets.

Mr. George Richards, of Boxbury, Mass., has patented a steam muffler composed of two plates of a diameter very much greater than the diameter of the pipe through which the steam escapes from the boiler, so that the steam has room to expand before escaping to the outer air, its expansion effectually deadening the noise caused by the passage through the contracted escape pipe.

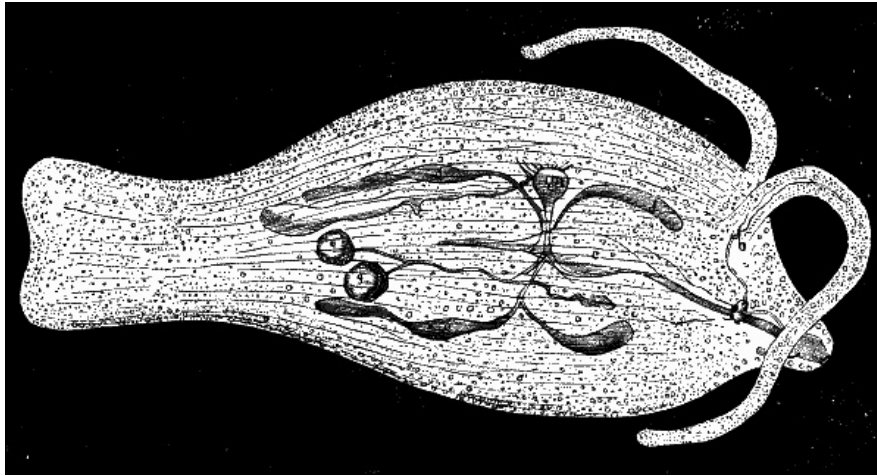
The Baby Elephant takes a Bath.

It is customary with traveling menageries in hot weather when convenient to a river to allow the elephants to take a bath. The London Circus passed through Woonsocket, R. I., the other day, when the keeper let loose all the elephants, including "Hebe" and her baby, for the above purpose. The mother and her offspring were permitted to approach a river for the first time since the baby was born, and they were, therefore, watched with great interest by their keeper. The mother cautiously approached the Blackstone River, which flows past the circus grounds, and waded in a short distance, carefully feeling her way; she then encouraged the baby to follow her, which the obedient little fellow did. When far enough in the mother caught the baby between her fore legs, and then lay down in the water and rolled over, giving the baby the first bath. The mother then felt perfectly satisfied with her job, and rising up approached the bank, bringing the little one with her. On reaching terra firma she drove the younger before her, and would not allow it to approach the water again, though it showed a disposition to do so.

PHYLLIRHOE BUCEPHALA.

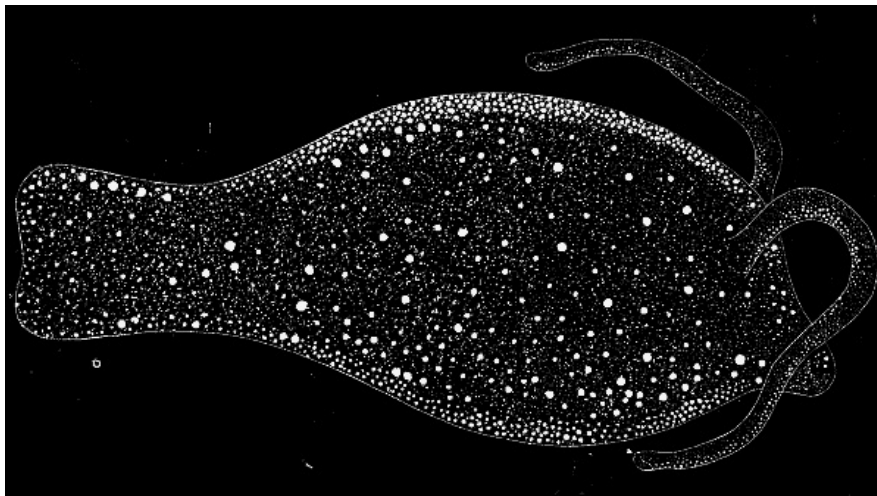
This little animal belongs to the family of snails, class Heteropoda, is about an inch long, and is devoid of any shell or covering whatever. It is flat, and so absolutely transparent that a person can read through its body. It is provided with a pair of feelers. The little animal is very luminous if placed in fresh water or disturbed, but this phenomenon is most beautiful when an ammonia solution is poured over the animal. It will shine with a vivid blue light, which extinguishes with life. But even after death the nerve cells, which are directly below the skin and produce the light, can be irritated sufficiently to become

luminous. It is a singular fact that electricity has no effect upon these nerve cells.



PHYLLIRHOE BUCEPHALA—AS SEEN IN THE LIGHT.

a b, ganglion; *c*, intestines; *d*, liver; *f*, kidneys; *g*, generative organs.



PHYLLIRHOE BUCEPHALA—SHOWING IN THE DARK THE LUMINOUS SPOTS.

Care of Trees and Shrubs.

In view of the drought which prevails in many parts of the country and its unusual severity over extensive districts, the *Rural New Yorker* suggests to those who have planted trees or shrubs the past spring that there is one method, and so far as we know, says the writer, only one, by which they may be protected against injury or death from that cause. Surface watering has been shown to do more harm than good. The ground is made hard and compact, thus becoming a better conductor of heat while it becomes less pervious to air and moisture. A portion of the surface soil should be removed, and then pailful after pailful of water thrown in until the ground, to a depth of two feet and to a width about the stem of not less than three feet in diameter, has become saturated. Then, as soon as the water has disappeared from the surface, the removed soil should be well pulverized and returned. A covering of boards, straw, or hay, or even of sand or gravel, may then be applied, and the tree or shrub, thus treated, will pass through ten days of additional drought in safety.

As soon as rain comes to wet the earth thoroughly, we think it is better to remove the mulch. Nothing is then gained by permitting it to remain. Mellowing the surface soil about the trees, thus keeping it free from grass and weeds, is then the most that is needed. We would repeat that the present is the season when the female borer deposits her eggs on the stems of fruit trees, and the wash of lime, potash, sulphur, etc. (darkened with lampblack), should now be applied and reapplied during June and July, as soon as washed off by rain.



THE FORCE OF TREE GROWTH.

The disruptive power of tree roots, growing in the crevices of rocks, is well known. Masses of stone weighing many tons are often dislodged in this way from the faces of cliffs, and no one gives them more than a passing glance. When, however, the sanctity of the tomb is invaded, despite the graven warning of the occupant, the case is very different, and superstitious people are apt to think there must be something in it more than accident and the unconscious expression of the resistless force of growing vegetation.

The engraving herewith is copied from a photograph sent to us by a European correspondent, of a grave in the Garten churchyard, in Hanover, Germany, the invasion of which by a birch tree has been the occasion of much wonderment by country people, who come from great distances to examine it.

The monument, so unfeelingly disrupted, was erected in 1782, and bears on its base the following inscription: "This grave, which was bought for all eternity, must never be opened." A chance birch seed, lodging in a crevice of the monument, has displayed the irony of nature in slowly yet surely thwarting the desire of the person who designed it for a perpetual memorial. All the joints are separated, the strong iron clamps are broken, and the birch tree has embraced the upper large block, which weighs about one and a quarter tons, and the tree is driving its roots below, gradually but surely tilting the structure.

Perseverance with the Drowned.

In a recent communication to the French Academy, Professor Fort asserts that he was enabled to restore to life a child three years old, by practicing artificial respiration on it four hours, commencing three hours and a half after apparent death. He mentions also a case in which Dr. Fournol, of Billancourt, reanimated, in July, 1878, an apparently drowned person by four hours of artificial respiration begun one hour after the patient was taken from the water. At this season, when cases of drowning are apt to be frequent, the possible benefit that may come from a persevering effort to revive victims of drowning, should encourage friends not to despair of their resuscitation, even after several hours of seemingly fruitless labor.

Simple Test for Chloral Hydrate.

A new test for chloral hydrate has been devised by Frank Ogston, namely, yellow sulphide of ammonium. On adding this reagent to a solution of chloral of moderate strength there is at first no change noticed, but in a short time the colorless solution acquires an orange yellow color, and on longer standing turns brown and evolves a gas of very disagreeable odor. Ogston's experiments show that a solution containing ten milligrammes turns brown in six hours, and gives the peculiar odor. With one milligramme the orange-yellow color appears in twelve hours, but no odor. Croton chloral gives the same reactions, but chloroform, chloric ether, and formic acid do not.

NATURAL HISTORY NOTES.

The Propagation of Oysters.—At the recent meeting in this city of the American Fish Cultural Association, a paper was read on the propagation of the oyster, by Dr. W. J. Brook, of the Johns Hopkins University. The manner in which this propagation takes place had never before, he said, been thoroughly understood. Through studies made by him last summer, however, great light was thrown on the subject. He found that the American oysters do not breed their young in the shell, as had been supposed, and that consequently the eggs can be impregnated artificially. An average oyster contains from

six to nine million eggs, and one of large size may contain fifty millions. The plan pursued by him in fertilizing these eggs was to chop the male and female oyster up together; thus the fluids are mixed and the impregnation is made complete. The process of development immediately begins, and goes on so rapidly that a change may be noted every fifteen seconds. In a very few hours the embryo is sufficiently formed to swim in the water. The shells at first are very small, and are not adjacent to each other. They grow very rapidly, closing down over the sides, and finally unite and form the hinge. In the short space of twenty-four hours the young oyster is able to take food, and from three days to a week it attains perfect form. During its early life it is a swimming animal. The oyster is able to reproduce its species at the end of a year's growth, and it is marketable at the age of three years.

• • •

S. P. Ruggles.

S. P. Ruggles died at Lisbon, N. H., May 28. He was principally known as the inventor of the Ruggles printing press, which was among the first of machine presses. His invention was what printers call an "upside-down press," the type being upside down when in the bed. About twenty-five years ago Mr. Ruggles sold out his interest for nearly \$200,000, and since then has not been in active business. He was the inventor of the raised alphabet for the blind, and always showed great interest in the amelioration of the condition of the sightless. He was also a great friend of mechanical education, and has written much on the subject.

• • •

SYDNEY INTERNATIONAL EXHIBITION.—1879-1880.

Extracts from the Report of the Judges in Horology.

DEPARTMENT III.—EDUCATION AND SCIENCE.

Group—Scientific and Philosophical Instruments and Methods.

Class 310.—Chronometric Apparatus, Chronometers, Astronomical Clocks, Watches, Chronographs, etc., etc.

Judges.—John McGarvie Smith, New South Wales.
P. E. Bound, Switzerland.
H. C. Russell, B.A., F.R.A.S., Great Britain.
E. Beckmann, Germany.
Gregory P. Harte, United States.

To the Honorable Committee on Judging and Awards, Sydney International Exhibition.

GENTLEMEN: I have the honor to hand you herewith the report of the judges of Class 310, as above,

And remain, sirs, your obedient servant,

GREGORY P. HARTE, Chairman.

The following exhibits were submitted for examination:

U. S. Exhibit, 537, American Watch Company, Waltham, Mass., U. S. A.—Watches and Chronographs.

British Exhibit, 1,048, Victor Kullberg, London, England—Watches and Chronographs.

British Exhibit, 1,054, Nicole & Nielsen, London, England—Watches, Chronographs, etc.

British Exhibit, 1,060, T. Russell & Sons, London, England—Watches, Chronographs, etc.

British Exhibit, 1,041, Castleberg & Co., London, England—Watches, etc.

British Exhibit, 1,060a, S. Backschmid, Switzerland—Watches.

• • •

German Exhibit, 36, A. Lange & Sons, Dresden, Germany—Watches, etc.

Swiss Exhibit, L. Audemars, Brassus, Switzerland—Watches, etc.

French Exhibit, 146, A. H. Rodanet, Paris, France—Chronometers.

French Exhibit, 177, G. Tribandeu, Besançon, France—Watches.

Swiss Exhibit, 14a, International Watch Company—Watches.

In presenting the following report, the judges desire to make some explanations, which, we trust, will excuse them in the minds of the impartial for any apparent neglect in the form of their report, and for the limited number of tests made of the horological exhibits.

The judges were appointed too late to do the full amount required, inasmuch as the number of exhibits was so much in excess of any reasonable allotment for examination and report before the closing of the Exhibition.

Commencing their labors, however, immediately after the first call, the examinations were not complete until March 3d, which only permitted a time test to be made of nine days in a single position. This single position was objected to by some of the exhibitors, but ill-advisedly, for the ratings observed in the watches of the objecting exhibitors were of such character as to establish in the minds of the judges the conclusion that their watches would not have made so good a comparative showing if there had been more time to observe the ratings in other positions.

Great care was taken by the individual judges in making up their note books during the examination of the watches, and scrutinizing the inherent and comparative merits of exhibits under the ten different heads unanimously agreed upon, as follows:

1. Originality.
2. Invention and discovery.
3. Utility and quality of material.
4. Skill in workmanship.
5. Fitness for purposes intended.
6. Adaptation to public wants.
7. Economy.
8. Cost.
9. Finish and elegance of cases.
10. Time-keeping qualities.

It was agreed the judges should use the number 100 as expressing the highest degree of excellence in each of these ten elements of inherent and comparative merit, and adjudge individually to each of the several exhibits such rating as their respective judgments would warrant after careful examination; each set of opinions being made a portion of this report, and in the *résumé* the mean average being taken as the unanimous verdict of the judges.

It was also decided we should take up each exhibit in the order originally examined, and, beginning with the first element of merit (originality), each judge should in numbers express his judgment of the inherent and comparative merit attaching to each exhibit in this one element; this being done, to proceed with each succeeding element in order and in the same manner. The five judgments being complete and in numbers, the aggregated verdict is arrived at simply by addition and division.

This is not only a verdict as to the inherent and comparative merits of each exhibit, but also a full analysis of each order of merit in any exhibit as compared with all the others. . . .

In giving this verdict it was absolutely necessary to ascertain to the fullest extent the time-keeping qualities of the exhibits. The judges were led to this conclusion from the fact that in some of the exhibits we were shown watches of equal finish containing every known application of horological science in practically the same construction, which should, as far as they could determine by merely optical examination, keep quite as good time as watches of double and treble the costs in other exhibits, thus involving their judgment in doubt upon several elements of merit.

In justice to themselves and to the exhibitors the judges determined to make the test in only one position, and give the whole of the time at their disposal to testing the watches in what might be considered their normal position, if such term is allowable—that is, "pendent up," or hanging.

At the solicitations of the judges Prof. H. C. Russell, Astronomer Royal at the Sydney Observatory, kindly consented to make the tests, and each of the exhibitors was requested to send three watches of his own selection to the Observatory for this trial.

As will be seen by the report of Professor Russell, eight of the ten exhibitors availed themselves of this opportunity. It is proper, however, to state here that none of the exhibitors apparently anticipated this test, and that it is possible some of the watches might have made a better record if they had been differently attended to since the opening of the Exhibition; but they were in this respect all upon a par.

The majority of the watches had been made for exhibition purposes and specially prepared to that end; and some had been previously rated at observatories before

sending.

Notably, however, to the contrary of the above, the exhibit of the American Watch Company was the ordinary and regular product of the factory, such as is finished every day.

Notwithstanding the possibility that these exhibits might have been better prepared for observatory time tests, some of the exhibits, as will be seen by the rating, demonstrate the wonderful advances made in the application of horological sciences to the manufacture of watches, and that their rating is being made equal to that of the best marine chronometers.

The following is the report of Professor Russell, and the accompanying diagram (see next page) will readily give an idea of the comparative performance of the different watches.

"Sydney Observatory, 26th February, 1880.

"GREGORY P. HARTE, ESQ.,

"Chairman of the Judges in Horology.

"SIR: I have the honor to report that, in response to your circular, inviting exhibitors of watches each to send three watches to the Observatory to be tested, I received on Monday, February 16th:

"Three watches, Nos. 611, 669, 237, from Mr. Dolman, agent for Mr. Tribandeu, Besançon.

"Three watches, Nos. 987271, 670068, 1221336, from Mr. Manson, agent for Waltham Watch Company.

"Three watches, Nos. 3171, 1935, 2526, from Mr. Allerding, agent for Mr. Kullberg.

"And on the forenoon of February 17th:

"Three watches, Nos. 11527, 19967, 12629, from Mr. Hoffnung, agent for Lange & Sons.

"Three watches, Nos. 1004, 8632, 8370, from Mr. Jacob, as agent for Nicole & Nielsen.

"Three watches, Nos. 70690, 23496, 113516, from Mr. Jacob, as agent for Thomas Russell & Sons.

"One watch, No. 47150, from Mr. Jacob, as agent for Castleberg.

"Three watches, Nos. 12731, 12483, 11680, from Mr. Wiesener, as agent for L. Audemars.

"And on 18th February:

"Two watches, Nos. 2724, 3528, from Mr. Jacob, as agent for Castleberg.

"On the 17th I began rating these watches, keeping them all in one position (hanging), and subject to the same conditions of temperature; in fact, they were all hung on one board, and kept in a compartment locked up so as to avoid change of temperature, except such changes as were due to changes in the weather.

"They were rated once a day by the standard clock, which affords special convenience for this work, and the error of which was found by daily astronomical observations giving the absolute time; great care was taken in rating so as to get the exact error of each watch every day, care being taken at the same time to avoid errors in the seconds dials, a fault sufficiently obvious in some of these exhibits.

"In presenting the result of this test in the form of a diagram (see diagram on the opposite page), it is necessary to explain that the curves show only the change of rate in each case, and nothing is shown here of the actual rate, which was large in several instances.

"In the diagram spaces between faint lines represent seconds; and the thicker faint lines represent the mean rate in each case: When the curve rises it shows that the watch was gaining on its previous rate, and when it falls the watch was losing on its previous rate. For example, in No. 4 curve the thicker line shows the position of a gaining rate of 3 sec. per day; on the 18th, watch No. 4 had a gaining rate of 2.7 sec., and is plotted below the thick line; on the 19th and 20th it was less than 3 sec., but on the 21st the rate increased to 4.8 sec., and the curve rises above the line. The same rule is followed with losing rates; and, therefore, each curve shows whether the watch was gaining or losing on its own rate.

"For convenient reference the barometer and temperature curves are plotted on the same sheet; although from the short time at command the watches could only be tested in one position, a glance at the diagram will show that in some degree at least the temperature adjustment and the isochronal properties of the balance springs were also tested; and I wish to call your attention to the fact that the whole of these show in a more or less degree a marked response to the change in temperature, some being over and

others under corrected.

"This fact is important, because it adds another proof that the old form of compensation balance—even when combined with chronometer spring and escapement and all the refinements which the best modern workman can add to it—fails to yield a complete correction for temperature; and I much regret that the American Watch Company, who claim to have overcome this fault by means of a balance involving a new arrangement of the metals, did not send to be tested any of their first-class watches containing this important improvement.

"Several of the rate curves, especially Nos. 4, 10, 13, 16, 21, and 24, respond to the change in the barometer in a way that shows the isochronal properties of their balance springs are not quite perfect. *Looking down the curves it becomes at once evident that watch No. 5, which is No. 670068, second grade of the American Watch Company, is remarkably free from these defects, and presents the best rate of all the watches tested.* No. 9, which is No. 2526, Kullberg, is the nearest approach to No. 5; indeed, the difference between its highest and lowest rates is 0.1 sec. less than No. 5, but it has not such a steady rate. The timekeeping of both these watches is remarkably good, and shows that we have entered upon a new era in the manufacture of pocket chronometers; *for these rates are better than the majority of marine chronometers.*

"*Among the cheaper watches tested, No. 6, which is No. 1221336, of the American Watch Company, is worthy of notice; it is a watch of the sixth grade, yet its performance has been better than that of many very expensive and otherwise first-class watches among those tested; such a watch speaks volumes in favor of the system under which it was made, and is the best comment upon the accuracy of the machines that produced it.*

"There are several watches among those tested which have kept wonderfully steady rates, but their comparative merit is shown in the diagrams much better than it could be by any description. The daily rate of each watch will be found in a table attached.

"The changes in Nos. 1, 2, 3, 17, and 19 were too great to plot.

"H. C. RUSSELL,
"Government Astronomer."

CONCLUSION OF THE REPORT.

In consideration of the facts developed in this examination, and the preponderance of elements of inherent and comparative merit adjudged by the judges (each in independent judgment) being equal to nearly 70 per cent more than the next highest exhibit, they have found it exceedingly difficult to make such a classification in degree as will give even-handed justice to all.

We adjudge to the

AMERICAN WATCH COMPANY, OF WALTHAM, MASS., U. S. A.,

a first-class award, and such other special distinction, diploma, medal, or award, as is consistent with the duties and obligations of the honorable Sydney International Commission, for the largest and most complete exhibit of horological instruments examined.

They also propose, as the only means by which their appreciation of the merits of the production of this company can be adequately or equitably recognized by the Committee on Judging and Awards, that a separate first-class award be given for the timekeeping qualities of all grades of these watches.

Also a separate first-class award for the perfection of this system of watchmaking and the improvements in the mechanical parts of the watch, being notably in the main spring and going barrel, the patent safety pinion, the perfect epicycloidal form of all the teeth of the train,, in every grade of watch alike, and the isochronal adjustment of the balance spring.

Also to Charles V. Woerd, mechanical superintendent of the American Watch Company, Waltham, Mass., U. S. A., a first-class award for his new mode of compensating balances.

Also a separate first-class award for the improvements in cases, the number of artistic forms and designs used, the beauty and elegance of their finish, and for their new and indestructible method of enameling.

VICTOR KULLBERG

The display of marine chronometers by this maker, with the Observatory ratings, was of the very first order. Every part of those instruments was remarkably well made, and the modifications of some of the balance wheels worthy of special attention. Adjudged a first-class award.

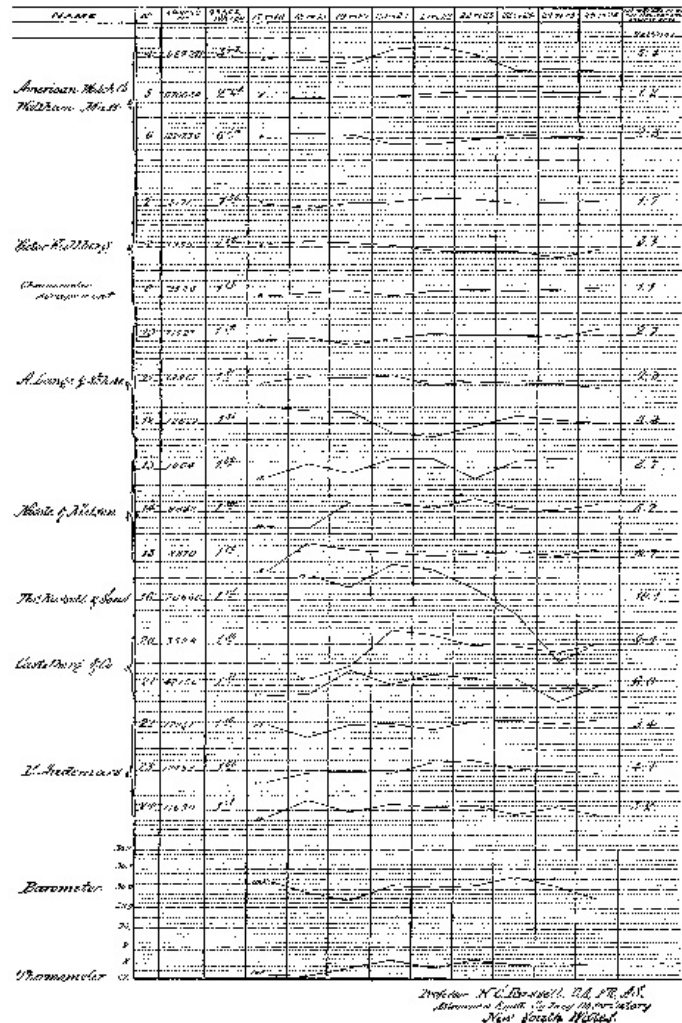
The display of watches by the same maker, although small, commanded attention from their very nice finish in all parts. As will be seen from the report and diagram of Professor Russell, they are good timekeepers, especially the one having the chronometer escapement. This style of watch, however, is of too delicate construction and too costly to fully meet the requirements of any considerable public want. The same objection will hold good as to the lever escapements as far as cost or economy is concerned, they being comparatively too high priced. Representing a certain class of manufacture, they are of the first order of merit, and adjudged a first-class award.

The "gas governor" exhibited by the same maker, an instrument for regulating the amount of heat in the testing of chronometers, is commended as a useful invention.

RESUME OF THE JURY'S EXAMINATION

NAMES OF EXHIBITORS.	Originality.	Invention and discovery.	Utility and quality of material.	Skill in workmanship.	Fitness for purposes intended.	Adaptation to public wants.	Economy.	Cost.	Finish and elegance of cases.	Timekeeping qualities.	Totals.
AMERICAN WATCH COMPANY, WALTHAM	98	95	95	93	100	100	100	100	100	100	981
Victor Kulberg 1	0	0	73	80	89	53	57	65	73	96	586
Nicole & Nielsen	28	22	47	58	70	60	48	38	76	80	527
Thos. Russell & Sons	8	0	25	30	36	34	22	267	42	44	267
Castleberg & Company	0	0	29	30	36	41	25	32	42	53	288
S. Backschmid	0	0	11	11	7	15	12	10	10	0	76
A Lange & Sons	45	33	68	83	86	73	59	79	71	89	686
Louis Audemars	98	24	73	85	80	54	44	58	76	79	671
G. Tribandeu	0	0	10	19	15	15	18	19	20	0	116
International Watch Company	0	0	32	31	37	49	41	63	34	0	287

FACSIMILE DIAGRAM SHOWING THE CHANGE IN RATE OF WATCHES TESTED AT THE OBSERVATORY, SYDNEY, FEBRUARY 17 TO 26, 1880.



Professor H. C. Russell, Ph.D., F.R.S.
 Observatory, Sydney, New South Wales.

SYDNEY INTERNATIONAL EXHIBITION.

[Continued from page 8.]

NICOLE & NIELSEN.

This exhibit, made specially for the Exhibition, comprised a full line of plain levers, split seconds, chronographs, calendars, repeaters, etc., and was a representative display of their peculiar style of manufacture in all its details. The cost of these watches, compared with others of similar construction and finish, was excessive; and while they show good timekeeping qualities, they do not equal that of other exhibits.

As representing their own methods of construction they are of the first order of merit, and are adjudged a first-class award.

THOS. RUSSELL & SONS

exhibit a full line of their manufacture, which, upon comparison with other exhibits of the same general character and construction, places them in the third order of merit, and they are adjudged a third-class award.

S. BACKSCHMID

exhibits a class of cheap watches of very inferior workmanship and finish, of the last order of merit, and adjudged a fourth-class award.

N. CASTLEBERG & CO.

exhibit a meritorious line of watches in many respects, of good finish, and not excessively high priced for their performances; of the second order of merit, and adjudged a second class award.

A. LANGE & SONS

exhibit a class of watches possessing many elements of merit, and of superior finish in many respects and at a cost which is quite reasonable. That the watches are constructed upon scientific principles and are intended as reliable timepieces, is shown from Observatory tests. The variations show that care has been taken to approximate a perfect adjustment, and that a partial success has been attained. A peculiarity in the construction of the balance wheel—having a horizontal split from the timing second holes each way—is noticeable, which we fail to understand. This exhibit was made expressly for this Exhibition, and Observatory rates sent with each watch, and, as a representative exhibit, although small, was the second best examined, and is, in its class, of the first order of merit, and adjudged a first-class award.

.

LOUIS AUDEMARS

exhibits a wonderful class of complicated watches, calendars, repeaters, chronographs, etc., etc., combined in one watch, and elaborately cased and artistically finished. The great element of merit in this exhibit is in the combination of the great number of unusual functions for a watch, and by skill in workmanship and mechanical science securing a correct performance.

The enormous cost of these watches is an effectual embargo on their use to any except the very few, and their utility is, therefore, very limited. In their class they are, however, of the first order of merit, and adjudged a first-class award.

G. TRIBANDEAU

exhibits a considerable collection of watches in a great variety of cases, of a class of workmanship, finish, and performance calling for the fourth order of merit, and are adjudged a fourth-class award.

A. H. RODANET

exhibits two marine chronometers only, one of which was broken and the other out of order; commended.

INTERNATIONAL WATCH COMPANY

exhibit a collection of watches of the third order of merit, and adjudged a third-class award.

In concluding this report, the judges very much regret the limitation in time which has prevented them securing position tests of this very interesting exhibit in horology, as much on account of the exhibitors as on their own account. Such advances have in the last few years been made in this science that, in the interest of the public as well as of the manufacturers, a sufficiency of time is desirable to make tests in five or six positions, and fourteen days should be allowed to each position. Tests for heat and cold, and an opportunity to carefully note barometric and thermometric influences upon the various systems of adjustment, would be very valuable and interesting.

Respectfully, etc.,

GREGORY P. HARTE, *Chairman*, United States.
H. C. RUSSELL, B.A., F.R.A.S., Great Britain.
J. MCGARVIE SMITH, New South Wales.
P. E. BOUND, Switzerland.
E. BECKMANN, Germany.

Corn Magnets.

Every kind of salve or lotion that is supposed to remove or relieve corns meets with a large sale. Corn files and pencils are getting stale, and an enterprising inhabitant of Dresden has lately brought out what he calls a "corn magnet." It is evident that it is as unlike a magnet as possible, for an examination shows that it is made of sulphur colored with graphite. The directions are to set fire to one end, and let a drop of the melted sulphur fall upon the corn. A convenient and agreeable operation, especially if the corn is on the bottom of the foot. It is needless to say that the corn usually survives the slight burn and lives to torment the owner again. All burns, whether by caustic or otherwise, should be avoided.

Experiments on the Resistance of Materials.

Prof. J. Burkitt Webb, C.E., now in Europe, writes as follows:

On the invitation of Prof. Spangenberg we visited the "Versuchsstation," at the Gewerbe-Akademie, where the important experiments upon materials for engineering purposes are being made. These tests are of two kinds—trials of strength and trials of endurance. The first are made by means of very heavy and accurate machinery, mostly new within the last two or three years; the latter are the celebrated "Dauer-Versuche," a description of which we will reserve for another letter.

The main machine, of which there are three or four duplicates at work at various points in Germany, is housed in a special building in the interior court of the academy. It consists of heavy iron "ways," some fifty feet long, accurately planed and secured to a stone foundation, with a hydraulic pump and scales at one end, and a number of massive attachments for subjecting the piece of iron or other material to various kinds of strains. There are also other instruments which belong to the machine as delicate as it is heavy, and which are used for adjusting the parts of the apparatus, reading the results of a test, or making calculations. This machine differs from others in the way of measuring the force used. It has been the custom to take the pressure on the liquid in the hydraulic cylinder, as shown by a manometer, as the basis of calculation. This introduces an inaccuracy, as part of this is due to the friction on the piston packing, and the true pressure is less than that shown by this irregular quantity. To avoid this difficulty a massive lever is introduced between the hydraulic press and the point where its pressure is applied. One arm of this lever is one-eighth inch long, and the other five hundred times as long, so that to measure a pressure of one hundred tons, four hundred pounds must be placed on the scale pan which hangs from the end of the long end of the lever. The fulcrum rests against the piston, and the short end of the lever is connected by heavy links with the apparatus by means of which the strain is applied. Technically speaking the fulcra of scales are "knife edges," but to convey a pressure of one hundred tons and remain free to move, these edges must be very obtuse, perhaps 160° to 170°; they must be as long as possible, some fifteen inches, of the best hardened steel, accurately ground, and must rest against a hardened plate of steel. Made with the greatest care the sharp edge under such a pressure will sometimes make a dent in the plate and the scales are clogged. As it is very difficult to measure the one-eighth inch with accuracy, another lever is provided with a ratio of one to ten, and with a short arm long enough to be made of a certain length with but a small percentage of error. To test the main lever this occupies essentially the same place as a sample of iron to be stretched; it is loaded with, say, two hundred pounds, which it multiplies to a ton; this pressure is then weighed by placing four pounds upon the main scale pan, and the fulcrum of the main lever is adjusted until the two weights balance.

The attachments consist of: I. Jaws for holding round, square, and flat bars to be submitted to tension. II. Arrangements for holding beams and columns in various ways at their ends, and compressing them until they are crushed or "buckle." III. Two massive graduated iron beams, which are placed crosswise on the "ways," and used for twisting shafts, railroad axles, etc. IV. A face plate, about four feet square, for holding plates of boiler iron nearly as large by the perimeter, and crushing in the middle by forcing various shaped pieces against it. V. Apparatus for bending a beam by crushing an angular piece into it; and in the same connection, VI. Shears for cutting off bars of metal and measuring the force required.

In connection with this main machine were some, quite old, which had been used in the infancy of the subject by a former professor, and a new special machine for the same purpose as attachment V., and which seemed to "kink" a piece of railroad iron as if it were only lead. In this the pressure was obtained by screws.

Among the instruments used for the adjustment of the parts of the main machine we saw the finest cathetometer we had ever seen. This instrument, by Breithaupt, in Cassel, has two telescopes, with micrometer screws with more than one hundred and twenty-five threads per inch, and scales graduated on glass with more than six hundred and twenty five divisions to the inch. Another instrument for measuring the deflection, in two directions at once, of a column under pressure, has micrometer screws with more than two hundred and fifty threads per inch. We saw also a planimeter, which not only calculated mechanically the area of a figure, but gave also its center of gravity, moment of inertia, etc. We saw also a French calculating machine; the other apparatus is, we believe, all German. If one is, however, critical, it will be found in many lines of business that all the fine goods here are imported, though naturally the Germans are slow to acknowledge it.

We witnessed the experiments on a sample of round iron over an inch in diameter, and on a piece of iron plate three inches wide by half an inch thick. It is perhaps needless to say that they seemed to stretch like putty and to break like thread. The pressure is put on a few hundred pounds at a time, and the elongation is read by two telescopes and a scale, which multiply the distance five hundred times. At the same time the first "elastic limit" is watched for. Before this is arrived at the piece will return to its original length when the tension is removed; after this the stretching is in part permanent. One of the facts brought out is that there are *several* elastic limits, in copper seven or eight. The appearance of the surface after the elastic limit is passed and the iron stretches is peculiar. A wavy appearance is seen, and longitudinal ridges begin to form, due to the changes going on in the crystals, by which they adapt themselves to the increased length. After a further general adaptation of structure becomes impossible, these appearances culminate in the weakest part. The apparatus for measuring the increase in length has long since been removed, and the places where it was attached have been filed smooth to avoid introducing the weak point artificially. The diameter of this part now reduces rapidly, and the surface becomes rough and the iron hot—you can see it stretch. When it has reduced twenty-five or more per cent it gives way suddenly with a sharp crack. The percentage of reduction before breaking is now recorded with the observations on the elasticity and the breaking strain, and the experiment is at an end. It suggested itself to see if the work done in pulling the iron apart was fully accounted for by the heat generated. We could easily calculate the work up to the point of maximum tension, but after this the force required was not measured; however, a rough calculation showed that the iron was as hot as required, or at least that the data would require to be quite complete if any residual was to be found.

Berlin, May 13, 1880.



ENGINEERING INVENTIONS.

An improved wheel guard, which will push any obstacles on the track aside, and which can be adjusted to a greater or less height above the rails, has been patented by Mr. Solomon Brisac, of New York city. It consists in a wheel guard formed of a metallic box with a beveled front side, which box is adjustably fastened to the front end of a recessed plate resting on and partially surrounding the grease box. The box is braced by means of a rod attached to its forward end and passing into a socket fastened to the bottom of the car.

An improved water motor, constructed on the general principle of a rotary engine, in which two compartments are arranged side by side, with a partition intervening, and in which the sliding pistons in the piston wheels in the two compartments are arranged at right angles to each other, has been patented by Mr. William E. Seelye, of Anoka, Minn.

Mr. Stephen Barnes, of New Haven, Conn., has invented a vibrating propeller, adapted to small boats and vessels to be operated by either hand or steam power. The floats are arranged so that they will offer no resistance on the return stroke.

An improved device for removing snow from railway tracks, and especially from between the rails, has been patented by Mr. David M. Horton, of Fishkill Village, N. Y. It consists

of a revolving brush, a mould board in juxtaposition thereto, and a fan blower, in combination with suitable driving gear for propelling the brush and fan.

An improvement in steam traps, patented by Mr. Hugh O. Ames, of New Orleans, La., consists in combining with a vibratory arm carrying a water receiver, a side apertured hollow trunnion, a discharge pipe, a jacketed standard, and an outlet pipe.

An improved cotton press has been patented by Mr. Alfred A. Janney, of Montgomery, Ala. This invention relates to an improvement in the class of cotton and hay presses in which the follower is worked by a screw that passes through a nut, to which the required rotary motion is imparted by means of lateral sweeps or levers. It consists in the means for supporting and securing the levers and forming a vertical guide for the screw, so that the levers are prevented from rocking or swaying as power is applied in the operation of packing.

Improved Steam Canal Boat.

The late experiments in canal steamboats bid fair to be a complete success. The Baxter steamers were not sufficiently remunerative to continue the building of that kind of boat. They do not carry a sufficient load, owing to their build, and that is made necessary by the form and arrangement of the machinery and propelling power, the propeller being that form used by the tug in Buffalo. The new style, which bids to pay handsomely, is as full a bow and stern as the ordinary first-class canal boat. The propelling power is radically different from the tug propeller. The wheel is eight feet in diameter and placed close to the stern; the boiler is upright, with a single engine, very compact machinery, taking up no more room than the stable in many boats, and enabling the boat to carry 7,500 bushels of corn and coal for the trip. With this cargo they run from Buffalo to New York in seven days on five and a half gross tons of coal, saving river and harbor towing. One returned from New York to Buffalo in one hour less than seven days, bringing one hundred and thirty tons of freight. The outlook now promises to supersede mule and horse towing. The Belgian system of cable towing will take that large number of boats now relying on the mule, and deliver them promptly as consigned and in much less time and cost than can be done by the mule. Both systems are necessary for rapid movement on the canal, and to cheapen the transfer from the West to the seaboard. Steam is sure to supersede animal power on the canal, as everywhere else. The canal steamboats are at last so far perfected as to insure a handsome profit in running them, and a large number will soon be at work on the canal. Two are to be constructed in Lockport as speedily as possible by one of our most enterprising boat builders, and the machinery is contracted for, thus opening up a new industry for our numerous and worthy mechanics.—*Lockport (N. Y.) Journal.*

Astronomical Notes.

OBSERVATORY OF VASSAR COLLEGE.

The computations in the following notes are by students of Vassar College. Although merely approximate, they are sufficiently accurate to enable the ordinary observer to find the planets.

M. M.

POSITIONS OF PLANETS FOR JULY, 1880.

Mercury.

On July 1 Mercury sets a few minutes after 9 in the evening.

Mercury can be readily found, early in July, a few degrees south of the point of sunset; the planet moves rapidly southward, but can be followed, and may be seen as late as the 20th. On July 18 Mercury has nearly the declination of Regulus.

Venus.

Venus keeps nearly the path of the sun, setting after the sun late in July, but so nearly with it that the planet is not likely to be seen.

Mars.

Mars has moved from its position nearly in line with Castor and Pollux toward Leo. It sets on July 1 at 9h. 44m. P.M. On the 31st Mars sets at 8h. 32m.

On the 31st, at meridian passage, Mars and Uranus are nearly together. Uranus is east

of Mars and half a degree south.

Jupiter.

Jupiter is coming into the evening hours.

On July 1 Jupiter rises a few minutes after midnight. On July 31 Jupiter rises a few minutes after 10 P.M. It will be known at once by its brilliancy.

Besides the ordinary belts of Jupiter the planet still shows at this time (June 10) the large ruddy spot spoken of by many persons some weeks since. This spot is elliptical in shape; its longest diameter is about one-fifth that of Jupiter. A small glass will show it, and the ordinary observer can, by watching its appearance and disappearance and reappearance, determine the time of rotation of Jupiter on its axis, or the length of the planet's day.

The best evenings for looking at Jupiter are those of July 23, when the satellite nearest to Jupiter goes across its face, preceded by its shadow; July 28, when the first and second satellites will make similar transits; and July 29, when Jupiter will rise without the presence of its third satellite, which will be in eclipse, and will come out of the shadow after midnight.

Saturn.

Saturn follows close upon Jupiter, but keeps further north in declination by about $2\frac{1}{2}^{\circ}$.

On July 1 Saturn rises 36m. after midnight. On the 31st Saturn rises at 10h. 38m. P.M.

The waning moon will pass north of Jupiter and Saturn on the 27th to 28th.

Any one who has a glass sufficient to show the ring of Saturn and the largest satellite, Titan, will find this planet intensely interesting, and the movements of the satellite will show the time of its revolution in its orbit around Saturn.

Uranus.

Uranus rises after the sun, and sets too nearly with the sun to be seen.

Neptune.

Neptune may be seen, with a good telescope, in the early morning hour. Neptune is $2\frac{1}{4}^{\circ}$ west of Alpha Ceti, and 11° north. It approaches Alpha Ceti during the month, and if it can be found, may be known to be a planet by that movement.



Fires in New York.

The report of the Board of Fire Commissioners, just printed, shows that during the year 1879 there were in this city 1,551 fires, of which 1,029 were discovered by persons not connected with the Fire or Police Department. In 1,456 cases the fires were confined to the buildings in which they originated. Twenty-five buildings were totally destroyed, and 69 were greatly damaged. Of all the fires, 1,001 were extinguished by buckets of water and fire extinguishers. The total estimated loss by fire during the year was \$900,280 on buildings and \$4,771,300 on stock, making a total of \$5,671,580. The estimated insurances on the buildings were \$7,276,446, and on stock, \$14,525,264, making a total of \$21,801,710. The estimated uninsured loss was \$180,060. In three cases the loss was between \$100,000 and \$115,000; in one case \$168,908; in one case \$352,185; in one case \$333,900; and in one case \$1,978,991. In 1,066 cases the loss was less than \$100.

Nearly a quarter of all the fires were caused by carelessness, and 100 are attributed to children playing with matches and fire. Forty fires were caused by the spontaneous combustion of oily rags and other materials, and 93 by exploding kerosene lamps. Four members of the department and 12 citizens died of injuries received at fires during the year, and 139 firemen and 54 citizens were more or less injured.

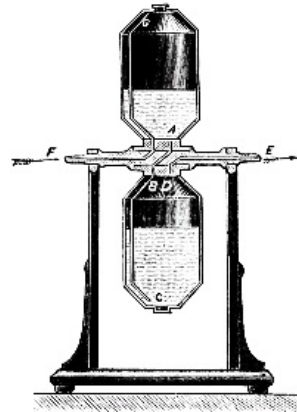
There are 729 uniformed members of the department. The pay roll of the whole department for 1879 was \$1,030,822.14, and the appropriation for all expenses was \$1,254,970. The appropriation for the present year is \$1,307,670. The department now possesses 233 horses, 1 marine steam fire engine, 58 steam fire engines, of which 5 are self propelling, 10 chemical engines, 24 hook and ladder trucks, 108 chemical fire extinguishers, and 4 aerial ladders, together with other fire apparatus.

The annual inspection of the department showed that the quickest average time in hitching a team was 3.17 seconds, and in hitching a single horse, 5.66 seconds. The general average in hitching all apparatus was, in 1879, 9.54 seconds; in 1878, 10.26 seconds; and in 1877, 13.03 seconds.

During the year, \$30,300 was collected for licenses for the sale of kerosene oil, each license costing \$10. The Fire Department Relief Fund now amounts to \$422,569.07, and the insurance fund to \$12,780.

ASPIRATOR AND COMPRESSOR.

Professor Marangoni, of Pavia, has invented an aspirator for measuring gases which is much simpler than many now in use in laboratories, which latter have the defect that the air or gas ascends through the descending liquid and makes thus the measuring of the former uncertain. The improved apparatus is shown in our illustration. It consists of two vessels attached to a fixed horizontal shaft, FE, which is placed upon two upright supports. This shaft has several ways or passages made in it which performs the functions of the taps. The water of the upper receptacle passes into the lower one by the passage, A, and thence through the tube, BC, issuing at its lowest extremity at C. The air contained in the lower vessel is thus emitted by the channel DE, cut into the shaft, while the air or gas is aspirated in the same ratio by the passage and tube, FG. The apparatus acts thus at the same time as aspirator and compressor. It is simple, and will be a useful addition to the laboratory.



New Photoglyptic Process.*

* A communication to the Photographic Society of France.

WALTER B. WOODBURY.

It is now thirteen years since I had the honor of introducing in France my new photoglyptic process, which, up to the present time, has remained in the hands of very few, owing to the great expense hitherto necessary to start the working of it. For some time I have been engaged in making experiments with a view to discover a system which should be at the same time simple and inexpensive; and the process which I have this evening the honor to bring before your notice is the result of my researches.

The summary of the new system is as follows:

To obtain from negatives reliefs on glass similar to transparencies by the carbon process, but modified in the quantity of materials used.

To attach, and keep in absolute contact with the relief so obtained, a sheet of tin foil.

To solidify this sheet of tinfoil by coating it with copper; then backing it up with another sheet of plate glass covered with a composition; and then to detach the whole from the first relief—the result being a mould ready to place in the press and print one thousand or more proofs.

I commence by showing you the relief made from the negative, and explaining how this is obtained.

I take a sheet of plate glass of a convenient size, and place it in hot water, together with a sheet of paper a little smaller; then, having driven out the excess of water by means of a squeegee, I place it on a leveling stand. Having prepared a solution composed of gelatine 200 parts, water 1,000 parts, glycerine 20 parts, white sugar 30 parts, with a little Indian ink, and filtered the same, I pour a sufficient quantity on the paper and spread it up to the corners with the finger. These plates are then dried in a dry place and can be kept until wanted.

To sensitize the plates I employ a bath of bichromate of potash of six per cent, and again dry them. Without doubt this method is rather long; but one should consider that each proof made is capable of giving five or ten thousand prints if necessary, as the same relief will make many printing moulds. I tried, with the aid of the Autotype Company, of London, to get a suitable tissue; but as this requires a uniform thickness of half a millimeter the ordinary system did not succeed. When the sensitized plate is dry the edges are cut with a knife, the glasses serving over and over again. I show you a piece of this prepared paper.

As in the carbon process, it is necessary to place a border of black paper at the back of the negative, and to cut the sensitized tissue a little larger than the opening.

After the exposure the gelatine is fixed on a collodionized glass by placing them both in water and squeegeeing the surface; but in dry weather it is as well to use albumen in place of collodion, as used by M. Ferrier for his transparencies in carbon. The glass holding the gelatine is now placed in a hot water bath heated to 42° Centigrade, and left till the paper comes away from the gelatine, when it is placed in this apparatus by the frame holding the grooves.

By means of this small gas regulator the temperature is kept always the same, namely, 50° Centigrade. The water should be now and then agitated by lifting up and down the frame holding the glasses.

After a space of three or four hours the reliefs will be sufficiently washed, and can be taken out and placed in alcohol to dry quickly and sharp at the same time. In this stage of the process all spots or scratches that may have been on the negative can be removed (being in relief on the gelatine) by means of a piece of glass. The relief is now ready to be covered with the tin. You will observe that up to the present the operations have been almost the same as those necessary to produce a transparency in carbon.

As it is of the first necessity that the tin should be kept in absolute contact with the gelatine relief, I prepare the latter by rubbing it over with a piece of flannel charged with a greasy matter (pomatum answers as well as anything). I then make a border of India-rubber in benzine round the glass. The effect of this is to prevent any air from returning between the tin and the relief when once it has been driven out.

Taking care that the back of the glass is perfectly clean, it is now placed on the steel or glass bed of a rolling-press. A sheet of tin foil (without holes) that has been smoothed on a sheet of glass by a soft brush is now laid on it, and then three or four thicknesses of blotting paper. The whole is then passed under the cylinder several times, each time increasing the pressure. The surface of the tin is now ready to place in the electrotyping cell, but must first be cleaned with a solution of caustic potash to remove any grease, and bordered with shellac varnish to prevent the copper from depositing where not required.

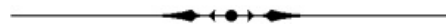
Electric contact is made by means of the small apparatus, on removing a small proportion of the lac varnish. After two or three hours sufficient copper will have been deposited, and after drying can be then attached to another glass, on which it will remain.

This glass is covered while hot with a composition of shellac, resin, and Venice turpentine, and can be prepared in advance, using an iron plate heated direct by the gas flame. The same iron plate is employed to again soften the composition and attach it to the copper; but this time heated only by boiling water, this temperature being sufficient to soften it until it enters into all the hollows of the copper. On placing a weight on the two glasses the excess of the composition is forced out at the edges. When cold the glass plate on which the copper and tin are now attached can be separated from the relief, which can then be used over and over again to produce fresh matrices.

The matrix or intaglio is now ready to place in the printing press, and the remaining operations of printing are exactly the same as those used in the old process of photoglyptic printing.

In placing the mould in the press it is advisable to place one or two thicknesses of stout blotting paper, previously wetted, under the mould to give to it a slight amount of elasticity and, at the same time, to keep it in place.

As in all other mechanical processes a reversed or pellicle negative is required; but it is very simple to print upon a specially prepared transfer paper, and, instead of mounting the print with the face uppermost, to attach it under water to the mount, and when dry to detach the paper on which the print has been made. By this means there remains only one thickness of paper instead of two, thus doing away with an objection which has often been found in mounted photographs for book illustration.



NEW INVENTIONS.

An improved combined cutting and clinching tool has been patented by Mr. Peter D. Graham, of Black Hawk, Col. The object of this invention is to provide a new, useful, and convenient tool for cutting and clinching horseshoe nails.

Mr. John J. Berger, of Brooklyn, N. Y., has patented an improved hand perforating or check stamp of the class which are used to cut or perforate the paper with figures and letters as a safeguard against alterations of the check; and the object of this improvement is to perforate the check with needle points, and at the same time ink the perforations, whereby the numbers may be clearly marked without cutting large openings in the paper.

An improved apparatus for the manufacture of nitric acid has been patented by Mr. Paul


Marcelin, of Black Rock, Conn. The object of this invention is to furnish apparatus for manufacturing nitric acid so constructed that the stronger acid may be separated from the weaker acid as the acid passes from the retort to the receiving bottles, to obtain a strong acid suitable for use in manufacturing nitro-glycerine.

Mr. Max Rubin, of New York city, has patented an improved shawl strap, so constructed that either strap may be wound up alone, or both may be wound up together, or one may be wound up tighter than the other, by adjusting the handle.

Mr. Ambrose Madden, of Asbury Park, N. J., has patented an attachment for use with halters for preventing horses from cribbing and to cure them of that pernicious habit; and the invention consists in a combination of rigid arms and straps hung upon the halter and carrying a spiked plate, which is retained beneath the animal's under lip in such manner that the motions of the horse in the act of cribbing cause the spikes to prick.

Business and Personal.

The Charge for Insertion under this head is One Dollar a line for each insertion; about eight words to a line. Advertisements must be received at publication office as early as Thursday morning to appear in next issue.

 *The publishers of this paper guarantee to advertisers a circulation of not less than 50,000 copies every weekly issue.*

Lubricene, Gear Grease, Cylinder and Machinery Oils. R. J. Chard, 6 Burling Slip, New York.

Telephones repaired, parts of same for sale. Send stamp for circulars. P. O. Box 205, Jersey City, N. J.

The genuine Asbestos Liquid Paints are the purest, finest, richest, and most durable paints ever made for structural purposes. H. W. Johns M'fg Co., 87 Maiden Lane, sole manufacturers.

The Finger Annunciator, and all other electr. apparatus, by Finger Annunciator Co., 73 Cornhill, Boston.

The most popular Pens in use are those of the Esterbrook Steel Pen Company. For sale everywhere. Everybody send Circular to R. K. Teller, Unadilla, N. Y.

A few pat. Centering and Squaring Attachments for Lathes, made by R. E. State & Co., entirely new, for sale cheap. J. & W. State, Lock Box 291, Springfield, Ohio.

Soapstone and Empire Gum Core Packing, the best for Railroads. Greene, Tweed & Co., New York.

Our new Stylographic Pen (just patented), having the duplex interchangeable point section, is the very latest improvement. The Stylographic Pen Co., Room 13, 169 Broadway, N. Y.

Shaw's U. S. Standard of Pressure. Mercury Gauges, all pressures, Steam, Hydraulic, and Vacuum. Best for pumping stations and pipe lines. 915 Ridge Ave., Philadelphia, Pa.

For Sale low—52 x 17 feet Sidewheel Boat, and one 23 x 5½ feet Launch; best condition. S. E. Harthan, Worcester, Mass.

Wanted.—Farm Engine, with Steam Plow Attachment. Address P. O. Box 18, Reinbeck, Iowa.

Advertising of all kinds in all American Newspapers. Special lists free. Address E. N. Freshman & Bros., Cincinnati, O.

Patent for Sale Cheap.—Entire Patent or State Rights. Just the thing for the summer. Money can be made out of it. Other business prevents owner from handling it. A. H. Watkins, 294 Harrison Ave., Boston, Mass.

We keep a full assortment of Esterbrook's, Gillott's, Spencerian, Perry's, and Lamar's Pens. Send for price list to J. Leach, 86 Nassau St., New York.

For Sale.—A Baltimore City Fire Department Steam Fire Engine, in complete working order. Address P. O. Box 676, Baltimore, Md.

Metallic Piston Rod Packing Company, 773 Broad St., Newark, N. J. Agents wanted;

terms liberal.

Skinner & Wood, Erie, Pa., Portable and Stationary Engines, are full of orders, and withdraw their illustrated advertisement. Send for their new circulars.

Asbestos Board on Chimneys prevents their heat from affecting the temperature of rooms through which they pass. Asbestos Pat. Fiber Co., lim., 194 Broadway, N. Y.

Sweetland & Co., 126 Union St., New Haven, Conn., manufacture the Sweetland Combination Chuck.

Power, Foot, and Hand Presses for Metal Workers. Lowest prices. Peerless Punch & Shear Co., 52 Dey St., N. Y. The Brown Automatic Cut-off Engine; unexcelled for workmanship, economy, and durability. Write for information. C. H. Brown & Co., Fitchburg, Mass.

Corrugated Traction Tire for Portable Engines, etc. Sole manufacturers, H. Lloyd, Son & Co., Pittsburg, Pa.

For the best Stave, Barrel, Keg, and Hogshead Machinery, address H. A. Crossley, Cleveland, Ohio.

Best Oak Tanned Leather Belting. Wm. F. Forepaugh, Jr., & Bros. 531 Jefferson St., Philadelphia, Pa.

National Steel Tube Cleaner for boiler tubes. Adjustable, durable. Chalmers-Spence Co., 40 John St., N. Y.

Split Pulleys at low prices, and of same strength and appearance as Whole Pulleys. Yocom & Son's Shafting Works, Drinker St., Philadelphia, Pa.

Stave, Barrel, Keg, and Hogshead Machinery a specialty by E. & B. Holmes, Buffalo, N. Y.

Solid Emery Vulcanite Wheels—The Solid Original Emery Wheel other kinds imitations and inferior. Caution.—Our name is stamped in full on all our best Standard Belting, Packing, and Hose. Buy that only. The best is the cheapest. New York Belting and Packing Company, 37 and 38 Park Bow. N. Y.

For Separators, Farm & Vertical Engines, see adv. p. 382.

Walrus Leather, Emery, and Polishing Goods. Greene, Tweed & Co., 118 Chambers St., New York.

Nickel Plating.—Sole manufacturers cast nickel anodes, pure nickel salts, importers Vienna lime, crocus, etc. Condit, Hanson & Van Winkle, Newark, N. J., and 92, and 94 Liberty St., New York.

Presses, Dies, and Tools for working Sheet Metal, etc. Fruit & other can tools. Bliss & Williams, B'klyn, N. Y.

Bradley's cushioned helve hammers. See illus. ad. p. 397.

Instruction in Steam and Mechanical Engineering. A thorough practical education, and a desirable situation as soon as competent, can be obtained at the National Institute of Steam Engineering, Bridgeport, Conn. For particulars, send for pamphlet.

Hydraulic Jacks, Presses and Pumps. Polishing and Buffing Machinery Patent Punches, Shears, etc. E. Lyon & Co., 470 Grand St., New York.

Forsyth & Co., Manchester, N. H., & 207 Centre St., N. Y. Bolt Forging Machines, Power Hammers, Comb'd Hand Fire Eng. & Hose Carriages, New & 2d hand Machinery. Send stamp for illus. cat. State just what you want.

For Mill Mach'y & Mill Furnishing, see illus. adv. p. 381.

Air Compressors, Blowing Engines, Steam Pumping Machinery, Hydraulic Presses. Philadelphia Hydraulic Works, Philadelphia, Pa.

For Patent Shapers and Planers, see ills. adv. p. 380.

For Pat. Safety Elevators, Hoisting Engines, Friction Clutch Pulleys, Cut-off Coupling, see Frisbie's ad. p. 316.

Machine Knives for Wood-working Machinery, Book Binders, and Paper Mills. Large knife work a specialty. Also manufacturers of Solomon's Parallel Vise. Taylor, Stiles & Co., Riegelsville, N. J.

For Alcott's Improved Turbine, see adv. p. 297.

Mineral Lands Prospected, Artesian Wells Bored, by Pa. Diamond Drill Co. Box 423, Pottsville, Pa. See p. 381.

Rollstone Mac. Co's Wood Working Mach'y ad. p. 380

Improved Solid Emery Wheels and Machinery, Automatic Knife Grinders, Portable Chuck Jaws. *Important*, that users should have prices of these first class goods. American Twist Drill Co., Meredithville, N. H.

For Standard Turbine, see last or next number.

Burgess' Non-conductor for Heated Surfaces; easily applied, efficient, and inexpensive. Applicable to plain or curved surfaces, pipes, elbows and valves. See p. 284.

Diamond Saws. J. Dickinson, 64 Nassau St., N. Y.

Steam Hammers, Improved Hydraulic Jacks, and Tube Expanders. R. Dudgeon, 24 Columbia St., New York.

Wanted—The address of 40,000 Sawyers and Lumbermen for a copy of Emerson's Hand Book of Saws. New edition 1880. Over 100 illustrations and pages of valuable information. Emerson, Smith & Co., Beaver Falls, Pa.

Eagle Anvils, 10 cents per pound. Fully warranted.

For Wood-Working Machinery, see illus. adv. p. 413.

Eclipse Portable Engine. See illustrated adv., p. 413.

Tight and Slack Barrel machinery a specialty. John Greenwood & Co., Rochester, N. Y. See illus. adv. p. 413.

Elevators, Freight and Passenger, Shafting, Pulleys and Hangers. L. S. Graves & Son, Rochester, N. Y.

\$400 Vertical Engine, 30 H.P. See page 413.

Best American Shot Gun made is the "Colts." Far superior to any English guns for the same price. For description, see SCI. AMERICAN of May 29. Send for circular to Hodgkins & Haigh, Dealers in General Sporting Goods, 300 Broadway, New York.

Telephones.—Inventors of Improvements in Telephones and Telephonic Apparatus are requested to communicate with the Scottish Telephonic Exchange, Limited, 34 St. Andrew Square, Edinburgh, Scotland. J. G. Lorrain, General Manager.

Pat. Steam Hoisting Mach'y. See illus. adv., p. 413.

Hydraulic Cylinders, Wheels, and Pinions, Machinery Castings; all kinds; strong and durable; and easily worked. Tensile strength not less than 65,000 lbs. to square in. Pittsburgh Steel Casting Co., Pittsburgh, Pa.

C. J. Pitt & Co., Show Case Manufacturers, 226 Canal St, New York. Orders promptly attended to. Send for illustrated catalogue with prices.

For best low price Planer and Matcher, and latest improved Sash, Door, and Blind Machinery, Send for catalogue to Rowley & Hermance, Williamsport, Pa.

Elevators.—Stokes & Parrish, Phila., Pa. See p. 412.

Penfield (Pulley) Block Works. See illus. adv. p. 413.

4 to 40 H.P. Steam Engines. See adv. p. 413.

[OFFICIAL.]

INDEX OF INVENTIONS

FOR WHICH

**Letters Patent of the United States were Granted in the Week
Ending;**

June 1, 1880,

AND EACH BEARING THAT DATE.

[Those marked (r) are reissued patents.]

A printed copy of the specification and drawing of any patent in the annexed list, also of any patent issued since 1866, will be furnished from this office for one dollar. In ordering please state the number and date of the patent desired, and remit to Munn & Co., 37

Park Row, New York city. We also furnish copies, of patents granted prior to 1866; but at increased cost, as the specifications not being printed, must be copied by hand.

Adding machine, C. P. Sullivan	228,416
Advertising checker board, H. P. Eysenbach	228,330
Annunciator, pneumatic, D. & T. Morris	228,267
Axle lubricator, car, C. D. Flynt	228,337
Axle lubricator, vehicle, L. Adams	228,242
Bale tie, W. S. E. Sevey	228,223
Baling press, H. O. King	228,361
Bedstead, invalid, E. Conover	228,318
Bedstead, sofa, C. S. E. Spoerl <i>et al</i>	228,408
Belting and process of manufacture, cotton, M. Gandy	228,186
Belts, lacing, O. C. Pomeroy	228,390
Berth for vessels, self-leveling, D. Huston (r)	9,224
Berth for vessels, self-leveling, C. C. Sanderson	228,278
Berth, self-leveling ship's, C. C. Sanderson	228,279
Binders, knot tyer for self, W. Stephens	228,228
Blacking and polishing boots and shoes, machine for, P. P. Audoye	228,297
Blower, fan, H. Allen	228,293
Bolting tree, J. M. Springer	228,409
Boot and gaiter, rubber, G. H. Sanford	228,398
Bottle, etc., lock, A. T. Boone	228,170
Bottle stopper, E. Hollender	228,355
Bow strings, clutch for, C. M. Beard	228,302
Bracelet, C. E. Hayward	228,348
Bracelet, A. Vester	228,425
Bran cleaner, L. Gathmann	228,340
Brick, pottery, etc., kiln for burning, E. Escherich	228,331
Buckboard, E. Hitt	228,352
Buckle, tug, D. O. Fosgate	228,255
Bumper, W. V. Perry	228,385
Bung, J. H. Stamp	228,227
Button fastener, D. Bainbridge	228,298
Button, sleeve and cuff, H. McDougall	228,370
Buttons, machine for making, W. W. Wade	228,233
Can, D. Bennett	228,167
Can fastening, J. Hall	228,343
Car coupling, Neff & Thalman	228,378
Car coupling, J. F. Stanley	228,411
Car coupling, Morand & Edwards	228,212
Car coupling tool, G. Searl	228,400
Car door bolt, A. W. Zimmerman	228,241
Car wheel, J. A. Woodbury	228,430
Car wheel chill, W. Wilmington	228,428
Cars, bell cord guide for railway, S. L. Finley	228,253
Cars upon railways, running, J. R. Cox	228,176
Carbureting gas and air, W. M. Jackson	228,357
Card teeth, apparatus for tempering wire for, W. F. Bateman	228,301
Carpet fastener, W. Bray	228,306
Carpet lining, G. J. Bicknell	228,168
Carpet sweeper, B. W. Johnson	228,358
Carriage top, E. S. Scripture (r)	9,230
Carriage top rest, G. Miles	228,211
Cartridge shells, machine for drawing, A. C. Hobbs	228,197
Centering machine, J. E. Dimsey	228,249
Chair seats and backs, making, F. D. Newton	228,377
Chandelier, extension, G. Bohner	228,244
Cheese press, M. B. Fraser (r)	9,228
Cheese press, G. F. White	228,291
Cheese vat, J. B. Marquis	228,366
Chuck, J. H. Westcott	228,426
Churn, E. Rhoades (r)	9,225
Clock, alarm, F. Krober	228,202
Clock, calendar, C. S. Lewis	228,261
Clock case, G. Havell	228,193
Cloth pressing machine, P. Miller	228,375
Clutch, W. J. Ray	228,276

Cockle separator, D. Brubaker	228,310
Collar, horse, T. Hepburn	228,351
Commode, A. Climie	228,313
Copying process, dry, Kwaysser & Husak	228,362
Cork tapering machine, F. L. Blair	228,169
Corn husking machine, F. L. Collis	228,174
Corn husking machine roller, E. A. Bourquin	228,305
Corn popper, D. Lambert	228,205
Cornice, window, H. F. Gray	228,189
Cranks, device for overcoming the dead points of, C. L. Fleischmann	228,185
Crochet needles, manufacture of, J. A. Smith	228,404
Crucible furnaces, hydrocarbon burner for, I. M. Seamans	228,281
Cutlery, pocket, J. W. Ayers	228,163
Danger signal, M. A. Vosburgh	228,232
Diagram for theaters, etc., H. T. Lemon	228,204
Domestic boiler, C. Friedeborn	228,339
Drawing, apparatus for assisting in, W. B. O. Peabody	228,273
Drying apparatus, W. J. Johnson	228,259
Electrotype mould, E. B. Sheldon	228,224
Exercising machine, F. Saunders	228,277
Eyeglasses, J. Schaffer	228,399
Fan, M. Rubin	228,394
Fastening device, E. F. Miller	228,373
Faucet attachment, C. A. Raggio	228,219
Fence nail, wire, E. L. Warren	228,236
Fertilizers, process and apparatus for the manufacture of, W. Plumer	228,387
Firearm, breech-loading, W. H. Baker	228,165
Fluted fabrics, machine for creasing, E. Brosemann	228,309
Fruit basket, H. B. Crandall	228,248
Fuel, process and apparatus for burning pulverized, A. Faber de Faur	228,334
Furnace, B. F. Smith	228,405
Gas, making illuminating, T. J. F. Regan	228,392
Gate, E. J. Clark	228,314
Gate roller, F. W. Holbrook	228,354
Gelatine or ichthyocolla from salted fish skins, extracting, J. S. Rogers (r)	9,226
Glass furnace, T. B. Atterbury	228,296
Glassware, machine for grinding, A. M. Bacon	228,164
Glove fastener, Smith & Hassall	228,403
Governor, elevator, I. H. Small	228,284
Governor for marine engines, W. U. Fairbairn	228,252
Governor for middlings purifiers, etc., feed, W. Donlon	228,180
Grain conveyer, pneumatic, F. A. Luckenbach	228,206
Grain meter, J. B. Stoner	228,229
Grain separator, magnetic, C. E. Fritz (r)	9,229
Grate, fire, E. Moneuse	228,376
Grinding and polishing wheel, G. Hart	228,257
Hammer lifter, drop, C. G. Cross	228,324
Harness, breast, J. W. Cooper	228,175
Harrow, S. A. Bollinger	228,303
Harrow, C. W. Page	228,382
Harvester, Jones & Emerson	228,359
Header, guiding, W. H. Keen	228,260
Heating and ventilating apparatus, J. W. Geddes	228,188
Hinge, spring, L. Bommer	228,304
Hitching strap, J. C. Covert	228,322
Hoes and other tools, eye for, J. R. Thomas	228,419
Hog holder and nose ring carrier, W. A. Stark	228,286
Horse hoof pad, A. J. Lockie	228,262
Horse power equalizer, W. T. G. Cobb	228,173
Horse power sweep, J. Branning	228,307
Horseshoe nail machine, J. Roy	228,220
Hose coupling, S. Adlam, Jr	228,161
Hose coupling, M. B. Hill	228,196
Hot air furnace, B. W. Felton	228,336
Hydraulic joint, E. D. Meier	228,209
Indigo blue, making artificial, A. Baeyer	228,300
Lamp, car, G. Seagrave	228,402

Lamp globe, G. Chappel	228,247
Lamp, street, J. G. Miner	228,265
Last, W. J. Crowley	228,178
Latch, G. L. Crandal	228,323
Life protector for railway rails, E. J. Hoffman	228,353
Lifting jack, J. State	228,285
Lithographic press, J. A. Parks	228,271
Lock, C. F. Otto	228,379
Locomotive, J. B. Smith	228,406
Locomotive cone, F. A. Perry	228,386
Locomotive engine, J. W. Clardy	228,172
Locomotive lubricator, W. P. Phillips	228,215
Loom for weaving gauze fabrics, A. McLean	228,372
Loom shedding mechanism, H. Halcroft	228,191
Loom temple, E. Hamilton	228,346
Loom temple, J. & L. Hardaker	228,256
Lubricator, W. P. Phillips	228,216, 228,217
Mash machine, W. Craig	228,177
Mash rake, whisky, D. L. Graves	228,190
Mash stirrer, G. Schock	228,222
Measuring machine, cloth, B. K. Parker	228,381
Middlings purifier, J. B. Martin	228,367
Milk cooler, T. Stahler	228,412
Milk pail holder, A. C. Dodge	228,327
Mining and excavating apparatus, E. M. Hugentobler	228,356
Mortising machine, E. H. N. Clarkson (r)	9,221
Nickel, solution for electro-deposition of, J. Powell	228,389
Oil and lard oil, treatment of petroleum lubricating, H. V. P. Draper	228,181
Ore separator, magnetic, T. A. Edison	228,329
Packing for piston rods, etc., metallic, L. Katzenstein	228,200
Packing for steam engines, spring, J. W. Smith	228,225
Packing, piston, W. M. Thompson, Jr	228,420
Packing, piston rod, R. B. H. Gould	228,341
Padlock, McDonald & McAllister (r)	228,371
Pantaloons, F. H. Carney	228,246
Paper bag machine, C. A. Chandler	228,312
Paper floor covering, compound, H. Hayward	228,194
Paper for bank notes, checks, etc., J Sangster	228,221
Parchment or toughening paper, making artificial, L. H. G. Ehrhardt	228,328
Pens, pointing, E. Wiley	228,427
Permutation lock, J. B. Cook	228,316
Photo-negatives, producing, embellishing, and retouching, W. D. Osborne	228,380
Photographic background, accessory for forming, W. F. Ashe	228,295
Picture support, G. H. Brown	228,308
Pillow sham holder, M. A. Steers	228,414
Pipes, tubing etc., protector for the threaded ends of, H. E. Boyd	228,171
Planter, corn, R. H. C. Enyeart	228,332
Planter, corn, A. Hearst	228,258
Planter, corn, A. Runstetler	228,396
Plow attachment, J. R. Harbaugh	228,192
Plumbers' traps, manufacture of, J. McCloskey	228,369
Preserving evaporated fruits and vegetables, H. G. Hulburd	228,198
Printer's chase, J. Kingsland, Jr	228,201
Printer's quoin, C. G. Squintani	228,410
Printer's type case, J. T. Edson	228,251
Pulley, J. B. Stockham	228,415
Pump, W. S. Laney	228,203
Pump, lift, P. T. Perkins	228,383
Pump, rotary, J. Hallner	228,344
Pump, steam jet, Randall & Tuttle	228,275
Railway heads, stop motion for, H. T. Spencer	228,407
Railway joints, angle splice for, J. D. Hawks	228,347
Railway signal apparatus, electric, O. Gassett	228,187
Range, D. H. Nation	228,268, 228,269, 228,270
Reclining chair, T. G. Maguire	228,263

Refrigerating and ice making apparatus, C. P. G. Linde	28,364
Rivets, making tubular, G. W. Tucker	228,423
Rock drills and earth augers, machine for operating, G. Taylor	228,418
Rubber bottles, etc., closing the openings in India, T. J. Mayall	228,207
Rubber, ornamenting hard, H., O., & M. Traun	228,290
Sash cord fastener and sash lock, combined, E. V. Heaford	228,349
Sash cord guide, E. H. N. Clarkson (r)	9,222
Sash fastener, S. P. Jackson	228,199
Sash fastening, J. Pusey	228,274
Sawing machine, circular, P. Pryibil	228,218
Sawing machine, drag, S. F. Steele	228,413
Sawing machine, drag, A. Wilkins	228,237
Screw bolt, L. Strauss	228,288
Screw threads, device for cutting, J. C. Williams	228,429
Sealing packages, E. A. McAlpin	228,368
Seaming machine, F. A. Walsh	228,234, 228,235
Sewing machine balance wheel pulley, E. Flather	228,184
Sheet metal joint, C. Wright	228,240
Shirt, G. C. Henning	228,195
Shoe, J. J. Snyder	228,226
Shoe nail, Z. Talbot	228,417
Shoe support, rubber, J. G. Foreman	228,338
Shoulder brace, C. A. Williamson	228,238
Sign, flexible, F. Tuchfarber (r)	9,223
Skiving machine, W. S. Fitzgerald	228,183
Skylight, W. D. Smith	228,282
Smoker's kit, T. V. Curtis	228,325
Soap and other materials, apparatus for mixing, W., Sr., W., Jr., & A. W. Cornwall	228,320
Soap, machine for mixing materials for making, W., Sr., W., Jr., & A. W. Cornwall	228,319
Soap, process and apparatus for remelting, W., Jr., & A. W. Cornwall	228,321
Soda water, apparatus for generating gas for, J. Collins	228,315
Spark arrester, locomotive, D. P. Wright	228,431
Spool box, C. Tollner	228,289
Stamp, hand, T. Berridge	228,243
Stamp, postage, J. Macdonough	228,365
Steam engine, J. C. Miller	228,374
Steam engine recorder, G. H. Crosby	228,179
Steam generator, N. Eaton	228,250
Stove, A. C. Barstow	228,166
Stove grate, J. Moore, Jr	228,266
Stove, hay, Stocum & Merrill	228,287
Stove, magazine, C. Seavor	228,401
Surface gauge, F. J. Rabbeth	228,391
Swarm catcher, J. W. Bailey	228,299
Syringe attachment, S Turner	228,422
Tackle or pulley block, T. R. Ferrall	228,335
Telephone, S. Russell	228,395
Telephone circuit switch, G. L. Anders	228,294
Telephones, dental attachment for, H. G. Fiske	228,254
Testing machine, T. Olsen	228,214
Textile and other materials, machine for cutting, A. Warth (r)	9,232
Textile fabrics, machine for cutting, A. Warth (r)	9,231
Ticket holder, C. Scherich	228,280
Ticket, railway, F. C. Nims	228,213
Tobacco caddy, R. Finzer	228,182
Tobacco hoisting apparatus, W. S. Guy	228,342
Tongs, pipe, S. Fawcett	228,333
Toy, creeping, P. Von Erichsen	228,231
Treadle mechanism, D. S. Van Wyck	228,424
Treadle power machine, G. W. Ziegler	228,432
Tree protector, J. W. Richards	228,393
Trimmings, flitter for milliners', J. Lambert	228,363
Tube machine, D. Appel	228,162
Valve, balanced, E. D. Meier	228,210
Vapor burner, W. H. Smith (r)	9,227

Vehicle spring, H. M. Keith	228,360
Vent for beer barrels, O. Zwietusch	228,292
Vessels, apparatus for unloading coal, etc., from, Cooney & Swanston	228,317
Vise and clamp, J. Brady	228,245
Wagon, road, C. W. Saladee	228,397
Wagon running gear, G. W. Burr	228,311
Wash boiler, O. Tilton	228,230
Washing and wringing machine, combined, C. H. Wood	228,239
Washing machine, J. B. Pettit	228,272
Water closets, flushing cistern for, S. G. McFarland	228,264
Water heater, K. McDonald	228,208
Water heater, fireplace, I. B. Potts	228,388
Whiffletree hook, E. Hanrahan	228,345
Windlass locking gear, Remington & Manton (r)	9,233
Windmill, A. H. Smith	228,283
Window screen, R. Perrin	228,384
Wire stretcher, H. Hemenway	228,350
Wood bit, L. Thuston	228,421

DESIGNS.

Carpets, T. J. Stearns	11,800 to 11,803
Carriage door fender, M. Wiard	11,805
Coffin lid lifters, J. W. Rogers	11,798
Fringe for knitted fabrics, G. Upton	11,804
Funeral ornaments, J. W. Rogers	11,799
Key bow, G. S. Barkentin	11,794
Medal batteries, Lewis & Brice	11,796
Pencil cases, L. W. Fairchild	11,795
Statuary, group of, J. Rogers	11,797

TRADE MARKS.

Cigars, E. Aschermann & Co	7,924
Cigars, Giglio & Freschi	7,926
Dry goods, Eddystone Manufacturing Co	7,931, 7,933
Flour, B. R. Pegram, Jr	7,727, 7,728
Prints, Eddystone Manufacturing Company	7,932
Soap, C. Davis & Co	7,925
Teas, table, Sanders & George	7,912
Velocipedes, N. S. C. Perkins	7,929

English Patents Issued to Americans.

From May 25 to June 1, 1880, inclusive.

Anthracite, obtaining, C. M. Warren, Norfolk, Mass.
 Burners and generators for hydrocarbons, E. G. Furber, New York city.
 Corsets, L. C. Warner, New York city.
 Engines, locomotive, W. P. Hauszey, Philadelphia, Pa.
 Filtering apparatus, G. H. Moore, Norwich, Conn.

Advertisements.

Inside Page, each insertion - - - 75 cents a line.

Back Page, each insertion - - - \$1.00 a line.

(About eight words to a line.)

Engravings may head advertisements at the same rate per line, by measurement, as the letter press. Advertisements must be received at publication office as early as Thursday morning to appear in next issue.

☞ The publishers of this paper guarantee to advertisers a circulation of not less than 50,000 copies every weekly issue.

Fifth Edition Just Ready.

The Complete Practical Machinist

Embracing Lathe Work, Vise Work, Drills and Drilling, Taps and Dies, Hardening and Tempering, the Making and Use of Tools, etc., etc. By Joshua Rose. Illustrated by 130 engravings. Fifth edition, revised. In one vol., 12mo., 376 pages. Price \$2.50 by mail, free of postage.

CONTENTS: Chapter I. Lathe and Machine Tools. II. Cutting Speed and Feed. III. Boring Tools for Lathe Work. IV. Screw-cutting Tools. V. General Observations on Lathe Work. VI. Turning Eccentrics. VII. Hand Turning. VIII. Drilling in the Lathe. IX. Boring Bars. X. Laps. XI. Twist Drills. XII. Tool Steel. XIII. Taps and Dies. XIV. Vise-work Tools. XV. Fitting Connecting Rods. XVI. Milling Machines and Milling Tools. XVII. To Calculate the Speed of Wheels, Pulleys, etc. XVIII. The Slide Valve. XIX. How to Set a Slide Valve. XX. Pumps Index.

We also publish:

The Modern Practice of American Machinists and Engineers.

By Egbert P. Watson. Illustrated by 86 engravings. 12mo, \$2 50

☞ The above or any of our Books sent by mail, free of postage, at the publication price.

Our new and enlarged CATALOGUE OF PRACTICAL AND SCIENTIFIC BOOKS—96 pages, 8vo—sent free to any one who will furnish his address.

HENRY CAREY BAIRD & CO.,

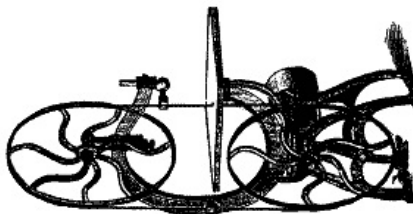
Industrial Publishers, Booksellers, and Importers,
810 Walnut St., Philadelphia, Pa.

FOR SALE,

A full set of Patent Office Reports, from 1849 to 1872.

Price \$60. Apply to C. M. ALEXANDER, Washington, D. C.

BAND SAWS
AND
PLANERS
a specialty.
C. Hodgkins & Son,
Marlboro, N. H.



1880

1880

Pittsburgh Exposition Society.

**THE FOURTH
EXPOSITION AND FAIR**

Will open to the public Thursday, September 2, and remain open day and evening (Sundays excepted) until Saturday, October 9th, 1880.

Blank forms of application for space, Prospectus, and Premium list may be had by addressing the secretary.

Exhibitors are earnestly requested to make early application for space, thus enabling the managers to better arrange the whole Exhibition.

New Machinery Hall; new Engine and Boilers.

Manufacturers and Inventors should avail themselves of the unsurpassed facilities offered by this Exposition for the introduction of new machinery to the public.

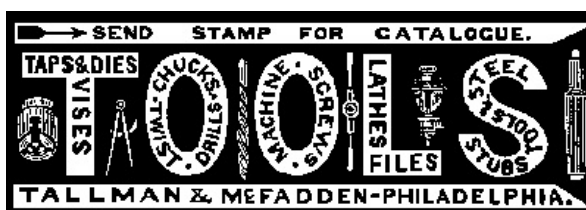
Office, GERMANIA BANK BUILDING, 89 Wood St.

P. O. BOX 895.

E. P. YOUNG,
General Manager.

I. C. PATTERSON,
Secretary.

JOHN D. BAILEY, Asst. Manager and Cashier.



Cigar Box Lumber,

MANUFACTURED by our NEW PATENT PROCESS.

The Best in the World.

SPANISH CEDAR,

MAHOGANY,

POPLAR.

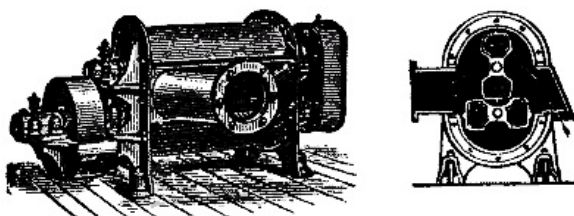
Also thin lumber of all other kinds, $\frac{1}{8}$ to $\frac{1}{2}$ in., at corresponding prices. All qualities. Equal in all respects to any made, and at prices much under any to be obtained outside of our establishment. Send for price list.

GEO W. READ & CO.,
186 to 200 Lewis Street, N. Y.

MOSQUITO CATCHER.

Will clear your room in a few minutes without smoke, soil, or grease. Price 50 cents. Send for circular. Agents wanted everywhere. Good terms. L. T. JONES,
166 Light Street, Baltimore, Md.

ROOTS' NEW IRON BLOWER.



POSITIVE BLAST.

IRON REVOLVERS, PERFECTLY BALANCED

IS SIMPLER, AND HAS

FEWER PARTS THAN ANY OTHER BLOWER.

P. H. & F. M. ROOTS, Manuf'rs, CONNERSVILLE, IND.

S. S. TOWNSEND, Gen. Agt., { 6 Cortlandt St.,
8 Dey Street, } NEW
WM. COOKE, Selling Agt., 6 Cortlandt Street, } YORK.
JAS. BEGGS & CO., Selling Agts., 8 Dey Street, }

 SEND FOR PRICED CATALOGUE.

FOUR SIDED MOULDER, WITH OUTSIDE BEARING.

We manufacture 5 sizes of these moulders.



Also Endless Bed Planers, Mortisers and Boreds. Tenoning Machines, Sash Dovetailers. Blind Rabbeting Machines. Also a large variety of other wood working machines.

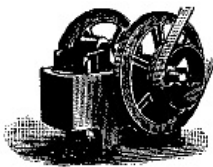
Address

LEVI HOUSTON, Montgomery, Pa.

STEAM PUMPS.

**THE NORWALK IRON WORKS CO.,
SOUTH NORWALK, CONN.**

THE BLAKE "LION AND EAGLE" CRUSHER,



A patented improvement of the former "New Pattern" Blake machine. Has much greater efficiency than the old. It requires only about half the power to drive, and is transported at much less expense (the size most used weighing several thousand pounds less than the unimproved machine). It requires less than half the time in oiling and other manipulation, and less than half the expense for repairs. Address



**E. S. BLAKE & CO., Pittsburgh, Pa., Sole
Proprietors and Manufacturers.**

Delamater Steam Pumps

For every variety of work

WATERWORKS PUMPING ENGINES

DELAMATER IRON WORKS

Boiler Makers, Engine Builders, and Founders,

Office, No. 10 CORTLANDT ST.,

Works, Foot of W. 18th St., North River, New York.

Model Engines



Complete sets of CASTINGS

for making small Model steam Engines 1½ in. bore, 3 in. stroke, price, \$4; ditto 2 in. bore, 4 in. stroke, price, \$10, same style as cut. Gear Wheels and Parts of Models. All kinds of Small Tools and Materials. Catalogue Free. GOODNOW & WIGHTMAN, 176 Washington Street, Boston, Mass.

STUTTERING CURED by Bates' Appliances. Send for description to SIMPSON & Co., Box 2236, New York.

SPARE THE CROTON AND SAVE THE COST.

Driven or Tube Wells

furnished to large consumers of Croton and Ridgewood Water. WM. D. ANDREWS & BRO., 235 Broadway, N. Y., who control the patent for Green's American Driven Well.

THE DRIVEN WELL.

Town and County privileges for making **Driven Wells** and selling Licenses under the established **American Driven Well Patent**, leased by the year to responsible parties, by

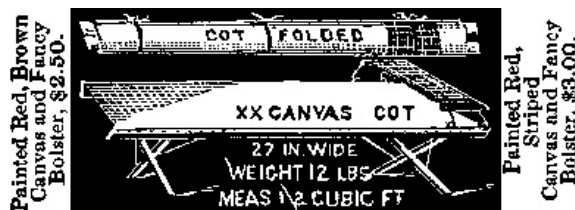
WM. D. ANDREWS & BRO.,
235 BROADWAY, NEW YORK.

ROOFING.

For steep or flat roofs. Applied by ordinary workmen at one-third the cost of tin. Circulars and samples free.

Agents Wanted. T. NEW, 32 John Street, New York.

XX COT (not painted, White Duck) \$2.



Makes a perfect bed. No mattress or pillows required. Better than a hammock, as it fits the body as pleasantly, and lies *straight*. Folded or opened instantly. Self-fastening. It is just the thing for hotels, offices, cottages, camp-meetings, sportsmen, etc. Good for the lawn, piazza, or "coolest place in the house." Splendid for invalids or children. Sent on receipt of price, or C. O. D. For **50 cts. extra**, with order, I will prepay expressage to any railroad station east of Mississippi River and north of

Mason and Dixon's line. For **75 cents**, in Minnesota, Missouri, and Iowa.

HERMON W. LADD, 108 Fulton St., Boston; 207 Canal St., New York; 165 North Second St., Phila.; 94 Market St., Chicago. Send for Circulars.



RUBBER BACK SQUARE PACKING.

BEST IN THE WORLD

For Packing the Piston Rods and Valve Stems of Steam Engines and Pumps.

B represents that part of the packing which, when in use, is in contact with the Piston Rod.

A the elastic back, which keeps the part B against the rod with sufficient pressure to be steam-tight, and yet creates but little friction.

This Packing is made in lengths of about 20 feet, and of all sizes from 1/4 to 2 inches square.

JOHN H. CHEEVER, Treas.

NEW YORK BELTING & PACKING CO., 37 & 38 Park Row, New York.

JOHN R. WHITLEY & CO.

European Representatives of American Houses, with First-class Agents in the principal industrial and agricultural centers and cities in Europe. London, 7 Poultry, E. C. Paris, 8 Place Vendôme. Terms on application. J. R. W. & Co. purchase Paris goods on commission at shippers' discounts.

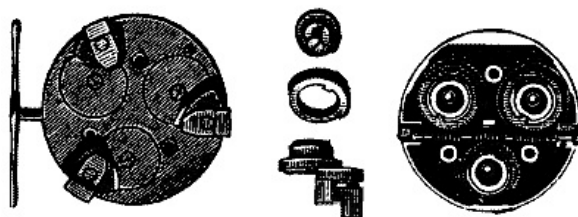


Grain Speculation

in large or small amounts. \$25 or \$25,000. Write W. T. SOULE & CO., Commission Merchants, 130 La Salle St., CHICAGO. ILL., for Circulars.

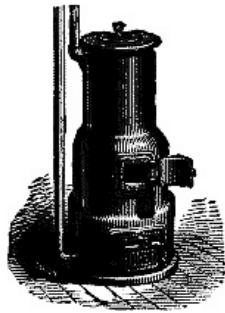
TELEPHONE Works 1 mile. Price \$3.50. Pat'd. Circulars free. **HOLCOMB & CO.,** Mallet Creek, Ohio.

Johnson's Patent Universal Lathe Chuck.



Lambertville Iron Works, Lambertville, N. J.

**Green House
Heating and
Ventilating**



Apparatus.

Base Burning Water Heaters.

For Small Conservatories.

HITCHINGS & CO.,
No. 233 Mercer Street,
New York.

Pond's Tools,

Engine Lathes, Planers, Drills, &c.

DAVID W. POND, Worcester, Mass.

Lathes, Planers Shapers

Drills, Bolt and Gear Cutters, Milling Machines. Special
Machinery. E. GOULD & EBERHARDT, Newark, N. J.



BUCK

ET PLUNGER STEAM PUMPS,
FOR EVERY DUTY.
VALLEY MACHINE CO.,
EASTHAMPTON, MASS.

Steel Castings

From ¼ to 15,000 lb. weight, true to pattern, of
unequaled strength, toughness, and durability.
15,000 Crank Shafts and 10,000 Gear Wheels of this
steel now running prove its superiority over all other
Steel Castings. Send for circular and price list.
CHESTER STEEL CASTINGS Co., 407 Library St., Phila, Pa.



The attention of Architects, Engineers, and Builders is called to the great decline in prices of wrought
STRUCTURAL IRON.

It is believed that, were owners fully aware of the small difference in cost which now exists between iron and wood, the former, in many cases, would be adopted, thereby saving *insurance* and avoiding all risk of *interruption to business* in consequence of fire. Book of detailed information furnished to Architects, Engineers, and Builders, on application.



Wood-Working Machinery,

Such as Woodworth Planing, Tonguing, and Grooving Machines, Daniel's Planers, Richardson's Patent Improved Tenon Machines, Mortising, Moulding, and Re-Saw Machines. Eastman's Pat. Miter Machines, and Wood-Working Machinery generally. Manufactured by

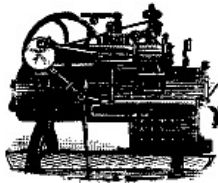
WITHERBY, RUGG & RICHARDSON,
 26 Salisbury Street, Worcester, Mass.
 (Shop formerly occupied by R. BALL & CO.)

Shafts, Pulleys, Hangers, Etc.

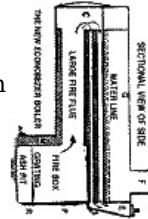
Full assortment in store for immediate delivery.

WM. SELLERS & CO.,
 79 Liberty Street, New York.

PORTER MANUF'G CO.



The New Economizer, the only Agricultural Engine with Return Flue Boiler in use. Send for circular to PORTER MFG. Co., Limited, Syracuse, N. Y.



G. G. YOUNG, Gen. Agt., 42 Cortland St., New York.



Forster's Rock & Ore Breaker and Combined Crusher and Pulverizer.

The simplest machine ever devised for the purpose.

Parties who have used it constantly for six years testify that it will do *double* the work of *any other Crusher*, with one-third the Power, and one-half the expense for keeping in repair. The smaller sizes can be run with Horse Power.

Address TOTTEN & CO., Pittsburgh Pa.

STEAM PUMPS.

HENRY R. WORTHINGTON.

239 Broadway, N. Y.

83 Water St., Boston.

709 Market St., St. Louis, Mo.

THE WORTHINGTON PUMPING ENGINES FOR WATER WORKS—Compound,

Condensing or Non-Condensing. Used in over 100 Water-Works Stations.

WORTHINGTON STEAM PUMPS of all sizes and for all purposes.

Prices below those of any other steam pump in the market.

WATER METERS. OIL METERS.

KNOW THYSELF.



The untold miseries that result from indiscretion in early life may be alleviated and cured. Those who doubt this assertion should purchase the new medical work published by the PEABODY MEDICAL INSTITUTE, Boston, entitled **THE SCIENCE OF LIFE; or, SELF-PRESERVATION.** Exhausted vitality, nervous and physical debility, or vitality impaired by the errors of youth, or too close application to business, may be restored and manhood regained.

Two hundredth edition, revised and enlarged, just published. It is a standard medical work, the best in the English language, written by a physician of great experience, to whom was awarded a gold and jeweled medal by the National Medical Association. It contains beautiful and very expensive engravings. Three hundred pages, more than 50 valuable prescriptions for all forms of prevailing disease, the result of many years of extensive and successful practice, either one of which is worth ten times the price of the book. Bound in French cloth; price only \$1, sent by mail, postpaid.

The London Lancet says: "No person should be without this valuable book. The author is a noble benefactor."

An illustrated sample sent to all on receipt of 6 cents for postage.

The author refers, by permission, to Hon. P. A. BISSELL, M.D., prest. of the National Medical Association. Address Dr. W. H. PARKER, No. 4 Bulfinch Street, Boston, Mass. The author may be consulted on all diseases requiring skill and experience.

**HEAL
THYSELF**

EXTRA BARGAINS.

Town rights, \$10; county, \$25. Best novelty yet manufactured. If you want to make money, address, with stamp,

J. H. MARTIN, Hartford, N. Y.



"The 1876 Injector."

Simple, Durable, and Reliable. Requires no special valves. Send for illustrated circular.

WM. SELLERS & CO., Phila.



CAVEATS, COPYRIGHTS, LABEL REGISTRATION, ETC.

Messrs. Munn & Co., in connection with the publication of the *SCIENTIFIC AMERICAN*, continue to examine Improvements, and to act as Solicitors of Patents for Inventors.

In this line of business they have had OVER THIRTY YEARS' EXPERIENCE, and now have *unequaled facilities* for the Preparation of Patent Drawings, Specifications, and the Prosecution of Applications for Patents in the United States, Canada, and Foreign Countries. Messrs. Munn & Co. also attend to the preparation of Caveats, Registration of Labels, Copyrights for Books, Labels, Reissues, Assignments, and Reports on Infringements of Patents. All business intrusted to them is done with special care and promptness, on very moderate terms.

We send free of charge, on application, a pamphlet containing further information about Patents and how to procure them; directions concerning Labels, Copyrights, Designs, Patents, Appeals, Reissues, Infringements, Assignments, Rejected Cases, Hints on the Sale of Patents, etc.

Foreign Patents.—We also send, *free of charge*, a Synopsis of Foreign Patent Laws, showing the cost and method of securing patents in all the principal countries of the world. American inventors should bear in mind that, as a general rule, any invention that is valuable to the patentee in this country is worth equally as much in England and some other foreign countries. Five patents—embracing Canadian, English, German, French, and Belgian—will secure to an inventor the exclusive monopoly to his discovery among about ONE HUNDRED AND FIFTY MILLIONS of the most intelligent people in the world. The facilities of business and steam communication are such that patents can be obtained abroad by our citizens almost as easily as at home. The expense to apply for an English patent is \$75; German, \$100; French, \$100; Belgian, \$100; Canadian, \$50.

Copies of Patents.—Persons desiring any patent issued from 1836 to November 20, 1866, can be supplied with official copies at reasonable cost, the price depending upon the extent of drawings and length of specifications.

Any patent issued since November 20, 1866, at which time the Patent Office commenced printing the drawings and specifications, may be had by remitting to this office \$1.

A copy of the claims of any patent issued since 1836 will be furnished for \$1.

When ordering copies, please to remit for the same as above, and state name of patentee, title of invention, and date of patent.

A pamphlet, containing full directions for obtaining United States patents sent free. A handsomely bound Reference Book, gilt edges, contains 140 pages and many engravings and tables important to every patentee and mechanic, and is a useful handbook of reference for everybody. Price 25 cents, mailed free.

Address

MUNN & CO.,
Publishers *SCIENTIFIC AMERICAN*,
37 Park Row, New York.

BRANCH OFFICE—Corner of F and 7th Streets, Washington, D. C.

FOR SALE.—PLYMOUTH MACHINE

Works, Engine, and Saw Mill. Patterns on hand. Locality good. For particulars, call on or address the works. Plymouth Machine Works, Plymouth, Richland Co., O.

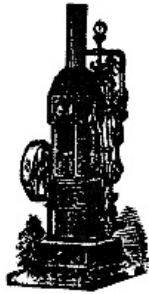
FIRE BRICK TILE AND CLAY RETORTS ALL SHAPES.
BORGNER & O'BRIEN
 23 1/2 ST., ABOVE RACE, PHILADELPHIA.

Holly's Improved Water Works.

Direct Pumping Plan. Advantages: 1. Secures by variable pressure a more reliable water supply for all purposes. 2. Less cost for construction. 3. Less cost for maintenance. 4. Less cost for daily supply for all use of Holly's Improved Pumping Machinery. 5. Affords the best fire protection in the world. 6. Largely reduces insurance risks and premiums. 7. Dispenses with fire engines, in whole or in part. 8. Reduces fire department expenses. For information, address the

HOLLY MANUFACTURING CO., Lockport, N. Y.,
 Or PARK BENJAMIN & BRO., Gen. Agents,
 49 and 50 Astor House, N. Y. City.

Established 1844.



JOSEPH C. TODD,

Successor to **TODD & RAFFERTY,**
PATERSON, N. J.,

Engineer and Machinist.

Flax, Hemp, Jute, Rope, Oakum, and Bagging Machinery. Steam Engines, Boilers, etc. Sole Agent for Mayher's New Patent Acme Steam Engine and Force Pumps combined. Also owner and exclusive manufacturer of

THE NEW

Baxter Patent Portable Steam Engine.

These engines are admirably adapted to all kinds of light power for driving printing presses, pumping water, sawing wood, grinding coffee, ginning cotton, and all kinds of agricultural and mechanical purposes, and are furnished at the following low prices:

1 Horse Power, \$150	1½ Horse Power, \$190
2 Horse Power, 245	2½ Horse Power, 275
3 Horse Power. 290	4 Horse Power, 350

Send for descriptive circular. Address

J. C. TODD,

PATERSON, N. J.

Or No. 10 Barclay St., New York.

THE HOLLY SYSTEM OF STEAM HEATING
 FOR CITIES AND VILLAGES. HOLLY STEAM COMBINATION CO. LIMITED.
 LOCKPORT N. Y.
SEE ILLUSTRATED AD IN LAST NUMBER.

The Asbestos Packing Co.,

Miners and Manufacturers of Asbestos,

BOSTON, MASS.,

OFFER FOR SALE:

PATENTED	ASBESTOS	ROPE PACKING,
"	"	LOOSE "
"	"	JOURNAL "
"	"	WICK "
"	"	MILL BOARD,
"	"	SHEATHING PAPER,
"	"	FLOORING FELT,
"	"	CLOTH.



COLUMBIA BICYCLE.

A practical road machine. Indorsed by the medical profession as the most healthful of outdoor sports. Send 3 cent stamp for 24 page catalogue, with price list and full information, or 10 cents for catalogue and copy of *The Bicycling World*.

THE POPE M'F'G CO.,
89 Summer Street, Boston, Mass.

MACHINISTS' TOOLS.

NEW AND IMPROVED PATTERNS.
Send for new illustrated catalogue.

Lathes, Planers, Drills, &c,
NEW HAVEN MANUFACTURING CO.,
New Haven, Conn.

H.W. JOHNS'

ASBESTOS

LIQUID PAINTS, ROOFING, BOILER COVERINGS,

Steam Packing, Sheathings, Fireproof Coatings, Cements,
SEND FOR SAMPLES, ILLUSTRATED PAMPHLET, AND PRICE LIST.

H. W. JOHNS M'F'G CO., 87 MAIDEN LANE, N. Y.

The George Place Machinery Agency

Machinery of Every Description.
121 Chambers and 103 Reade Streets, New York.

THE WATSON PUMP FOR ARTESIAN OR DEEPWELL
ROD IN DIRECT LINE MACHINE SIMPLE EFFICIENT
JAMES WATSON PUMPING PISTON ROD PLUNGER & WELL
1008 - 5 FRONT ST. PHILA.

DIES FOR EVERY PURPOSE.

STILES & PARKER PRESS CO., Middletown, Ct.

BI-SULPHIDE OF CARBON.

E. R. TAYLOR,
Cleveland, O.

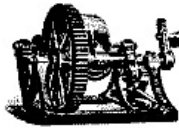
ICE-HOUSE AND REFRIGERATOR.—

Directions and Dimensions for construction, with one illustration of cold house for preserving fruit from season to season. The air is kept dry and pure throughout the year at a temperature of 34° to 36°. Contained in SCIENTIFIC AMERICAN SUPPLEMENT, **116**. Price 10 cents. To be had at this office and of all newsdealers.

BEECHER & PECK,

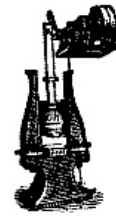
Successors of MILO PECK, Manufacturers of

PECK'S PATENT DROP PRESS.



Regular sizes. Hammer from 50 to 2,570 Lb. Special attention given to making of Drop Dies, Drop and Machine Forgings.

New Haven, Conn.



17-STOP ORGANS

Sub-bass and Oct. Coupler, box'd and ship'd only \$97.75. New Pianos, \$195 to \$1,600. Before you buy an instrument be sure to see my Mid-summer offer, illustrated, free. Address Daniel F. Beatty, Washington, N. J.

EMERY WHEELS and GRINDING MACHINES.

THE TANITE CO.,

Stroudsburg, Monroe County, Pa.

Orders may be directed to us at any of the following addresses, at each of which we carry a stock:



London, Eng., 9 St. Andrews St.,
Liverpool, Eng., 42, The Temple, Dale St.
Holborn Viaduct, E. C. **San Francisco,** 2 and 4 California St.
Sydney, N. S. W., 11 Pitt St. St.
Chicago, 152 and 154 Lake St. **St. Louis,** 209 North Third St.
" " 811 to 819 North
Cincinnati, 212 West Second St.
Second St. **Louisville,** 427 West Main St.
Indianapolis, Corner Maryland and Delaware Sts.
Nashville, 28 West Side Public Square.
New Orleans, 26 Union St.

The New York Ice Machine Company,

21 COURTLANDT STREET. ROOM 54.

Low Pressure Binary Absorption System.

Advantages over other Machines.

Makes 25 per cent. more Ice. Uses only ¼ water of condensation. No Pressure at rest. Pressure in running, 14 pounds. Self-lubricating. No Leaks, non-inflammable. No action on Metals. Easy Attendance.

WM. A. HARRIS.

PROVIDENCE, R. I. (PARK STREET),

Six minutes walk West from station.

Original and Only builder of the

HARRIS-CORLISS ENGINE

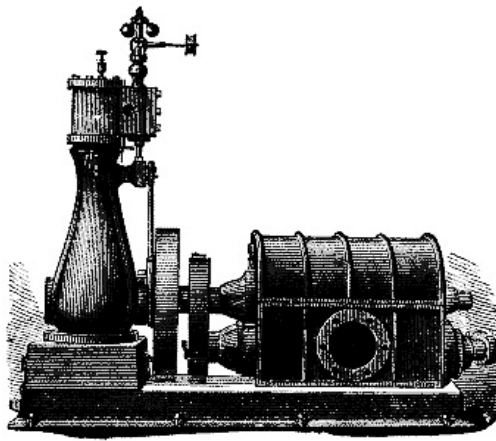
With Harris' Patented Improvements,
from 10 to 1,000 H.P.

THE BAKER BLOWER.

**Centennial Judges
Report.**

"Good Design and Material. Very efficient in action. With the special advantages that they can be connected for motion directly with engine without the use of gearing or belting."

SEND FOR CATALOGUE.
WILBRAHAM BROS. No.
2318 Frankford Avenue,
PHILADELPHIA, PA.



BOILER COVERINGS,

Plastic Cement and Hair Felt, with or without the
Patent "**AIR SPACE**" Method.

ASBESTOS MATERIALS,

Made from pure Italian Asbestos, in fiber, mill board, and round
packing.

THE CHALMERS-SPENCE CO.,

40 John Street, and Foot of E. 9th Street, New York.

TELEGRAPH and Electrical Supplies.

Send for Catalogue.

C. E. JONES & BRO., CINCINNATI, O.



WOOD SOLE SHOES.

The cheapest, most durable, warm, good
looking, and thoroughly waterproof shoe.
Particularly adapted to Brewers, Miners, and
all classes of laborers. Send stamp for
circular and price list.

CHAS. W. COPELAND,

122 Summer St., Boston, Mass.

BUY NO BOOTS OR SHOES

Unless the soles are protected from wear by
*Goodrich's Bessemer Steel Rivets. Guaranteed to
outwear any other sole.* All dealers sell these boots.
Taps by mail for 50 cents in stamps. Send paper
pattern of size wanted.

H. C. GOODRICH, 19 Church St., Worcester, Mass.

SPY Glasses, Field & Opera Glasses, **MICROSCOPES,** **McALLISTER** Magnifying Glasses. Circulars free.

Mfg Optician, 49 Nassau St., N. Y.



PAINTERS attention: send for circulars. etc. of
my latest Metallic Plates for graining oak,
walnut, chestnut, ash, etc, in the most rapid
and excellent manner, no skill required. **J. J.
CALLOW.** Cleveland. O.

HARTFORD

STEAM BOILER

Inspection & Insurance

COMPANY.

W. B. FRANKLIN, V. Pres't, J. M. ALLEN, Pres't.
J. B. PIERCE, Sec'y.

The Rodier Patent Single Iron Plane.



Made of extra quality iron. A practical labor saving tool. Cuts against the grain equally as well as with it. Can be adjusted instantly to cut a coarse or fine shaving, and excels any double iron plane ever produced. Address LAFLIN MANUFACTURING CO., North Elm Street, Westfield, Mass.

Pyrometers, For showing heat of Ovens, Hot Blast Pipes, Boiler Flues. Superheated Steam, Oil Stills, etc.

HENRY W. BULKLEY, Sole Manufacturer,
149 Broadway, N. Y.

THE MACKINNON PEN OR FLUID PENCIL.



Particulars
mailed Free.
MACKINNON
PEN CO.,

200 Broadway, near Fulton St., N. Y.

FRIEDMANN'S PATENT INJECTOR,

The best

BOILER FEEDER

In the world.

Simple, Reliable, and Effective.

40,000 IN ACTUAL USE.

NATHAN & DREYFUS,

Sole Manufacturers, NEW YORK.

Send for Descriptive Catalogue.

SUPPLIES FROM HYDRANT PRESSURE



the cheapest power known. Invaluable for blowing Church Organs, running Printing Presses, *Sewing Machines in Households*, Turning Lathes, Scroll Saws, Grindstones, Coffee Mills, Sausage Machines, Feed Cutters, *Electric Lights*, Elevators, etc. It needs little room, no firing up, fuel, ashes, repairs, engineer, explosion, or delay, no extra insurance, no coal bills. Is noiseless, neat, compact, steady; will work at any pressure of water above 15 lb.; at 40 lb. pressure has 4-horse power, and capacity up to 6 or 8 horse power. Prices from \$15. to \$250. Send for circular to THE BACKUS WATER MOTOR CO., Newark, N. J.

Pictet Artificial Ice Co., Limited,

P. O. Box 3083. 142 Greenwich St., New York.

Guaranteed to be the most efficient and economical of all existing Ice and Cold Air Machines.

MICROSCOPES, OPERA GLASSES,
SPY
Glasses, Spectacles, Thermometers, Barometers,
Compasses.

R. & J. BECK, Manufacturing Opticians, Philadelphia, Pa.
Send for ILLUSTRATED PRICED CATALOGUE.

J. STEVENS & CO.,



P. O. Box 28, Chicopee Falls, Mass.

Manufacturers of Stevens' Patent Breech-Loading Sporting and Hunters' Pet Rifles, Single and Double Barrel Shot Guns, Pocket Rifles, Pocket Shot Guns, Gallery Rifles, Superior Spring Calipers and Dividers, including the New Patent Coil Spring Calipers: also Double Lip Countersinks and Hathaways' Patent Combination Gauge.

Mill Stones and Corn Mills.

We make Burr Millstones, Portable Mills, Smut Machines, Packers, Mill Picks, Water Wheels, Pulleys, and Gearing specially adapted to Flour Mills. Send for catalogue.

J. T. NOYE & SONS, Buffalo, N. Y.

**PATENT
COLD ROLLED
SHAFTING.**

The fact that this shafting has 75 per cent. greater strength, a finer finish, and is truer to gauge, than any other in use renders it undoubtedly the most economical. We are also the sole manufacturers of the CELEBRATED COLLINS' PAT. COUPLING, and furnish Pulleys, Hangers, etc., of the most approved styles. Price list mailed on application to
JOHN & LAUGHLINS,
Try Street, 2d and 3d Avenues,

Pittsburg, Pa.

190 S. Canal Street, Chicago, Ill.

Stocks of this shafting in store and for sale by
FULLER, DANA & FITZ, Boston, Mass.
Geo. Place Machinery Agency, 121 Chambers St., N. Y.

Leffel Water Wheels,

With recent improvements.

Prices Greatly Reduced.

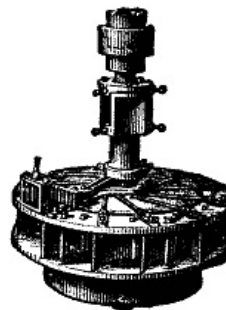
8000 in successful operation.

FINE NEW PAMPHLET FOR 1879,

Sent free to those interested.

James Leffel & Co,

Springfield, O.
110 Liberty St., N. Y. City.



A PLANING MILL OUTFIT FOR SALE

very low for cash. Will sell all together or each machine separate.
All first-class machines, good order.

J. H. KERRICK & CO., Indianapolis, Ind.

BOGARDUS' PATENT UNIVERSAL ECCENTRIC MILLS —For grinding Bones, Ores, Sand, Old Crucibles, Fire Clay, Guanos, Oil Cake, Feed, Corn, Corn and Cob, Tobacco, Snuff, Sugar, Salts, Roots, Spices, Coffee, Cocoanut, Flaxseed, Asbestos, Mica etc., and whatever cannot be ground by other mills. Also for Paints, Printers' Inks, Paste Blacking, etc. JOHN W. THOMSON, successor to JAMES BOGARDUS, corner of White and Elm Sts., New York.



Printing Press

Print cards labels &c. (Self-inker \$5) 13 larger sizes
For business or pleasure, young or old. Do your own
advertising and printing. Catalogue of presses, type,
cards, &c., for 2 stamps.

Kelsey & Co. Meriden, Conn.

HEKTOGRAPH

Patents for the process of Dry Copying have been issued to us, dated May 18 and June 1, 1880. The Hektograph is now the only gelatine copying pad which can be used without infringing. All infringements will be prosecuted to the full extent of the law.

HEKTOGRAPH CO., 23 and 24 Church Street, New York.

THE TANITE CO.,

STROUDSBURG, PA.

EMERY WHEELS AND GRINDERS.

LONDON—9 St. Andrews St., Holborn Viaduct, E. C.

LIVERPOOL—42 The Temple, Dale St.

WOOD WORKING MACHINERY.

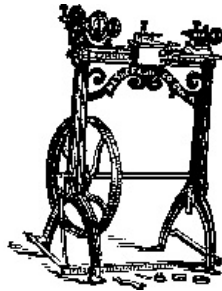
PLANING, MATCHING, MOLDING, MORTISING,
TENONING, CARVING,
MACHINES,
BAND & SCROLL SAWS
UNIVERSAL
AND VARIETY WOOD WORKERS
& c. & c.

J. A. FAY & CO.
CINCINNATI, O. U. S. A.

Metallic Shingles

Make the most **DURABLE** and **ORNAMENTAL**
ROOF in the world. Send for descriptive circular and
new prices to

IRON CLAD MANUFACTURING CO.,
22 CLIFF STREET, NEW YORK.



SHEPARD'S CELEBRATED **\$50 Screw Cutting Foot** **Lathe.**

Foot and Power Lathes, Drill Presses,
Scrolls, Circular and Band Saws, Saw
Attachments, Chucks, Mandrels, Twist
Drills, Dogs, Calipers, etc. Send for
catalogue of outfits for amateurs or
artisans.

H. L. SHEPARD & CO.,
331, 333, 335. & 337 West Front Street,
Cincinnati, Ohio.

WANTED.—FIRST-CLASS PARTIES IN

cities to sell Wing's Fan Ventilators. A great success.
Rare chance to make money. See Sci. Am., Jan. 31,
1880, or send for pamphlets, etc. L. J. WING, or THE
SIMONDS MFG. Co., 50 Cliff Street, New York.

CENTENNIAL AND PARIS MEDALS. **Mason's Friction Clutches and Elevators.**

"New and Improved Patterns."
VOLNEY W. MASON & CO., Providence, R. I., U. S. A.

BROWN'S PAT. SPLIT
Shafts, Hangers, PULLEYS

At low prices. Largest assortment. A. & F.
BROWN, 57, 59, & 61 Lewis St., New York.



OF THE
Scientific American
FOR 1880.

The Most Popular Scientific Paper in the World.

VOLUME XLIII. NEW SERIES.

**Only \$3.20 a Year, including postage. Weekly.
52 Numbers a Year.**

This widely circulated and splendidly illustrated paper is published weekly. Every number contains sixteen pages of useful information, and a large number of original engravings of new inventions and discoveries, representing Engineering Works, Steam Machinery, New Inventions, Novelties in Mechanics, Manufactures, Chemistry, Electricity, Telegraphy, Photography, Architecture, Agriculture, Horticulture, Natural History, etc.

All Classes of Readers find in THE SCIENTIFIC AMERICAN a popular *resume* of the best scientific information of the day; and it is the aim of the publishers to present it in an attractive form, avoiding as much as possible abstruse terms. To every intelligent mind, this journal affords a constant supply of instructive reading. It is promotive of knowledge and progress in every community where it circulates.

Terms of Subscription.—One copy of THE SCIENTIFIC AMERICAN will be sent for *one year*—52 numbers—postage prepaid, to any subscriber in the United States or Canada, on receipt of **three dollars and twenty cents** by the publishers; six months, \$1.60; three months, \$1.00.

Clubs.—**One extra copy** of THE SCIENTIFIC AMERICAN will be supplied gratis *for every club of five subscribers* at \$3.20 each; additional copies at same proportionate rate. Postage prepaid.

One copy of THE SCIENTIFIC AMERICAN and one copy of THE SCIENTIFIC AMERICAN SUPPLEMENT will be sent for one year, postage prepaid, to any subscriber in the United States or Canada, on receipt of *seven dollars* by the publishers.

The safest way to remit is by Postal Order, Draft, or Express. Money carefully placed inside of envelopes, securely sealed, and correctly addressed, seldom goes astray, but is at the sender's risk. Address all letters and make all orders, drafts, etc., payable to

**MUNN & CO.,
37 Park Row, New York.**

To Foreign Subscribers.—Under the facilities of the Postal Union, the SCIENTIFIC AMERICAN is now sent by post direct from New York, with regularity, to subscribers in Great Britain, India, Australia, and all other British colonies; to France, Austria, Belgium, Germany, Russia, and all other European States; Japan, Brazil, Mexico, and all States of Central and South America. Terms, when sent to foreign countries, Canada excepted, \$4, gold, for SCIENTIFIC AMERICAN, 1 year; \$9, gold, for both SCIENTIFIC AMERICAN and Supplement for 1 year. This includes postage, which we pay. Remit by postal order or draft to order of Munn & Co, 37 Park Row, New York.

Transcriber's Note:

Some archaic (Early American) spellings have been retained.

Obvious punctuation errors have been repaired.

The remaining corrections made are indicated by dotted lines under the corrections.

Scroll the mouse over the word and the original text will appear.

TRADE MARKS.:

Flour, B. R. Pegram, Jr. ... 7,727, 7,728

7,727, 7,728 are as printed.

Error

'peculiarities' corrected to 'peculiarities'

"The distinctive peculiarities of this steamer are the very high steam pressure that she carries— ..."

[A REMARKABLE LITTLE STEAMER.](#)

[Return to Top](#)

*** END OF THE PROJECT GUTENBERG EBOOK SCIENTIFIC AMERICAN, VOL. XLIII.—
NO. 1. [NEW SERIES.], JULY 3, 1880 ***

Updated editions will replace the previous one—the old editions will be renamed.

Creating the works from print editions not protected by U.S. copyright law means that no one owns a United States copyright in these works, so the Foundation (and you!) can copy and distribute it in the United States without permission and without paying copyright royalties. Special rules, set forth in the General Terms of Use part of this license, apply to copying and distributing Project Gutenberg™ electronic works to protect the PROJECT GUTENBERG™ concept and trademark. Project Gutenberg is a registered trademark, and may not be used if you charge for an eBook, except by following the terms of the trademark license, including paying royalties for use of the Project Gutenberg trademark. If you do not charge anything for copies of this eBook, complying with the trademark license is very easy. You may use this eBook for nearly any purpose such as creation of derivative works, reports, performances and research. Project Gutenberg eBooks may be modified and printed and given away—you may do practically ANYTHING in the United States with eBooks not protected by U.S. copyright law. Redistribution is subject to the trademark license, especially commercial redistribution.

START: FULL LICENSE
THE FULL PROJECT GUTENBERG LICENSE
PLEASE READ THIS BEFORE YOU DISTRIBUTE OR USE THIS WORK

To protect the Project Gutenberg™ mission of promoting the free distribution of electronic works, by using or distributing this work (or any other work associated in any way with the phrase "Project Gutenberg"), you agree to comply with all the terms of the Full Project Gutenberg™ License available with this file or online at www.gutenberg.org/license.

Section 1. General Terms of Use and Redistributing Project Gutenberg™ electronic works

1.A. By reading or using any part of this Project Gutenberg™ electronic work, you indicate that you have read, understand, agree to and accept all the terms of this license and intellectual property (trademark/copyright) agreement. If you do not agree to abide by all the terms of this agreement, you must cease using and return or destroy all copies of Project Gutenberg™ electronic works in your possession. If you paid a fee for obtaining a copy of or access to a Project Gutenberg™ electronic work and you do not agree to be bound by the terms of this agreement, you may obtain a refund from the person or entity to whom you paid the fee as set forth in paragraph 1.E.8.

1.B. "Project Gutenberg" is a registered trademark. It may only be used on or associated in any way with an electronic work by people who agree to be bound by the terms of this agreement. There are a few things that you can do with most Project Gutenberg™ electronic works even without complying with the full terms of this agreement. See paragraph 1.C below. There are a lot of things you can do with Project Gutenberg™ electronic works if you follow the terms of this agreement and help preserve free future access to Project Gutenberg™ electronic works. See paragraph 1.E below.

1.C. The Project Gutenberg Literary Archive Foundation ("the Foundation" or PGLAF), owns a compilation copyright in the collection of Project Gutenberg™ electronic works. Nearly all the individual works in the collection are in the public domain in the United States. If an individual work is unprotected by copyright law in the United States and you are located in the United States, we do not claim a right to prevent you from copying, distributing, performing, displaying or creating derivative works based on the work as long as all references to Project Gutenberg are removed. Of course, we hope that you will support the Project Gutenberg™ mission of promoting free access to electronic works by freely sharing Project Gutenberg™ works in compliance with the terms of this agreement for keeping the Project Gutenberg™ name associated with the work. You can easily comply with the terms of this agreement by keeping this work in the same format with its attached full Project Gutenberg™ License when you share it without charge with others.

1.D. The copyright laws of the place where you are located also govern what you can do with this work. Copyright laws in most countries are in a constant state of change. If you are outside the United States, check the laws of your country in addition to the terms of this agreement before downloading, copying, displaying, performing, distributing or creating derivative works based on this work or any other Project Gutenberg™ work. The Foundation makes no representations concerning the copyright status of any work in any country other than the United States.

1.E. Unless you have removed all references to Project Gutenberg:

1.E.1. The following sentence, with active links to, or other immediate access to, the full Project Gutenberg™ License must appear prominently whenever any copy of a Project Gutenberg™ work (any work on which the phrase "Project Gutenberg" appears, or with which the phrase "Project Gutenberg" is associated) is accessed, displayed, performed, viewed, copied or distributed:

This eBook is for the use of anyone anywhere in the United States and most other parts of the world at no cost and with almost no restrictions whatsoever. You may copy it, give it away or re-use it under the terms of the Project Gutenberg License included with this eBook or online at www.gutenberg.org. If you are not located in the United States, you will have to check the laws of the country where you are located before using this eBook.

1.E.2. If an individual Project Gutenberg™ electronic work is derived from texts not protected by U.S. copyright law (does not contain a notice indicating that it is posted with permission of the copyright holder), the work can be copied and distributed to anyone in the United States without paying any fees or charges. If you are redistributing or providing access to a work with the phrase "Project Gutenberg" associated with or appearing on the work, you must comply either with the requirements of paragraphs 1.E.1 through 1.E.7 or obtain permission for the use of the work and the Project Gutenberg™ trademark as set forth in paragraphs 1.E.8 or 1.E.9.

1.E.3. If an individual Project Gutenberg™ electronic work is posted with the permission of the copyright holder, your use and distribution must comply with both paragraphs 1.E.1 through 1.E.7 and any additional terms imposed by the copyright holder. Additional terms will be linked to the Project Gutenberg™ License for all works posted with the permission of the copyright holder found at the beginning of this work.

1.E.4. Do not unlink or detach or remove the full Project Gutenberg™ License terms from this work, or any files containing a part of this work or any other work associated with Project Gutenberg™.

1.E.5. Do not copy, display, perform, distribute or redistribute this electronic work, or any part of this electronic work, without prominently displaying the sentence set forth in paragraph 1.E.1 with active links or immediate access to the full terms of the Project Gutenberg™ License.

1.E.6. You may convert to and distribute this work in any binary, compressed, marked up, nonproprietary or proprietary form, including any word processing or hypertext form. However, if you provide access to or distribute copies of a Project Gutenberg™ work in a format other than "Plain Vanilla ASCII" or other format used in the official version posted on the official Project Gutenberg™ website (www.gutenberg.org), you must, at no additional cost, fee or expense to the user, provide a copy, a means of exporting a copy, or a means of obtaining a copy upon

request, of the work in its original "Plain Vanilla ASCII" or other form. Any alternate format must include the full Project Gutenberg™ License as specified in paragraph 1.E.1.

1.E.7. Do not charge a fee for access to, viewing, displaying, performing, copying or distributing any Project Gutenberg™ works unless you comply with paragraph 1.E.8 or 1.E.9.

1.E.8. You may charge a reasonable fee for copies of or providing access to or distributing Project Gutenberg™ electronic works provided that:

- You pay a royalty fee of 20% of the gross profits you derive from the use of Project Gutenberg™ works calculated using the method you already use to calculate your applicable taxes. The fee is owed to the owner of the Project Gutenberg™ trademark, but he has agreed to donate royalties under this paragraph to the Project Gutenberg Literary Archive Foundation. Royalty payments must be paid within 60 days following each date on which you prepare (or are legally required to prepare) your periodic tax returns. Royalty payments should be clearly marked as such and sent to the Project Gutenberg Literary Archive Foundation at the address specified in Section 4, "Information about donations to the Project Gutenberg Literary Archive Foundation."
- You provide a full refund of any money paid by a user who notifies you in writing (or by e-mail) within 30 days of receipt that s/he does not agree to the terms of the full Project Gutenberg™ License. You must require such a user to return or destroy all copies of the works possessed in a physical medium and discontinue all use of and all access to other copies of Project Gutenberg™ works.
- You provide, in accordance with paragraph 1.F.3, a full refund of any money paid for a work or a replacement copy, if a defect in the electronic work is discovered and reported to you within 90 days of receipt of the work.
- You comply with all other terms of this agreement for free distribution of Project Gutenberg™ works.

1.E.9. If you wish to charge a fee or distribute a Project Gutenberg™ electronic work or group of works on different terms than are set forth in this agreement, you must obtain permission in writing from the Project Gutenberg Literary Archive Foundation, the manager of the Project Gutenberg™ trademark. Contact the Foundation as set forth in Section 3 below.

1.F.

1.F.1. Project Gutenberg volunteers and employees expend considerable effort to identify, do copyright research on, transcribe and proofread works not protected by U.S. copyright law in creating the Project Gutenberg™ collection. Despite these efforts, Project Gutenberg™ electronic works, and the medium on which they may be stored, may contain "Defects," such as, but not limited to, incomplete, inaccurate or corrupt data, transcription errors, a copyright or other intellectual property infringement, a defective or damaged disk or other medium, a computer virus, or computer codes that damage or cannot be read by your equipment.

1.F.2. LIMITED WARRANTY, DISCLAIMER OF DAMAGES - Except for the "Right of Replacement or Refund" described in paragraph 1.F.3, the Project Gutenberg Literary Archive Foundation, the owner of the Project Gutenberg™ trademark, and any other party distributing a Project Gutenberg™ electronic work under this agreement, disclaim all liability to you for damages, costs and expenses, including legal fees. YOU AGREE THAT YOU HAVE NO REMEDIES FOR NEGLIGENCE, STRICT LIABILITY, BREACH OF WARRANTY OR BREACH OF CONTRACT EXCEPT THOSE PROVIDED IN PARAGRAPH 1.F.3. YOU AGREE THAT THE FOUNDATION, THE TRADEMARK OWNER, AND ANY DISTRIBUTOR UNDER THIS AGREEMENT WILL NOT BE LIABLE TO YOU FOR ACTUAL, DIRECT, INDIRECT, CONSEQUENTIAL, PUNITIVE OR INCIDENTAL DAMAGES EVEN IF YOU GIVE NOTICE OF THE POSSIBILITY OF SUCH DAMAGE.

1.F.3. LIMITED RIGHT OF REPLACEMENT OR REFUND - If you discover a defect in this electronic work within 90 days of receiving it, you can receive a refund of the money (if any) you paid for it by sending a written explanation to the person you received the work from. If you received the work on a physical medium, you must return the medium with your written explanation. The person or entity that provided you with the defective work may elect to provide a replacement copy in lieu of a refund. If you received the work electronically, the person or entity providing it to you may choose to give you a second opportunity to receive the work electronically in lieu of a refund. If the second copy is also defective, you may demand a refund in writing without further opportunities to fix the problem.

1.F.4. Except for the limited right of replacement or refund set forth in paragraph 1.F.3, this work is provided to you 'AS-IS', WITH NO OTHER WARRANTIES OF ANY KIND, EXPRESS OR IMPLIED, INCLUDING BUT NOT LIMITED TO WARRANTIES OF MERCHANTABILITY OR FITNESS FOR ANY PURPOSE.

1.F.5. Some states do not allow disclaimers of certain implied warranties or the exclusion or limitation of certain types of damages. If any disclaimer or limitation set forth in this agreement violates the law of the state applicable to this agreement, the agreement shall be interpreted to make the maximum disclaimer or limitation permitted by the applicable state law. The invalidity or unenforceability of any provision of this agreement shall not void the remaining provisions.

1.F.6. INDEMNITY - You agree to indemnify and hold the Foundation, the trademark owner, any agent or employee of the Foundation, anyone providing copies of Project Gutenberg™ electronic works in accordance with this agreement, and any volunteers associated with the production, promotion and distribution of Project Gutenberg™ electronic works, harmless from all liability, costs and expenses, including legal fees, that arise directly or indirectly from any of the following which you do or cause to occur: (a) distribution of this or any Project Gutenberg™ work, (b) alteration, modification, or additions or deletions to any Project Gutenberg™ work, and (c) any Defect you cause.

Section 2. Information about the Mission of Project Gutenberg™

Project Gutenberg™ is synonymous with the free distribution of electronic works in formats readable by the widest variety of computers including obsolete, old, middle-aged and new computers. It exists because of the efforts of hundreds of volunteers and donations from people in all walks of life.

Volunteers and financial support to provide volunteers with the assistance they need are critical to reaching Project Gutenberg™'s goals and ensuring that the Project Gutenberg™ collection will remain freely available for generations to come. In 2001, the Project Gutenberg Literary Archive Foundation was created to provide a secure and permanent future for Project Gutenberg™ and future generations. To learn more about the Project Gutenberg Literary Archive Foundation and how your efforts and donations can help, see Sections 3 and 4 and the Foundation information page at www.gutenberg.org.

Section 3. Information about the Project Gutenberg Literary Archive Foundation

The Project Gutenberg Literary Archive Foundation is a non-profit 501(c)(3) educational corporation organized under the laws of the state of Mississippi and granted tax exempt status by the Internal Revenue Service. The Foundation's EIN or federal tax identification number is 64-6221541. Contributions to the Project Gutenberg Literary Archive Foundation are tax deductible to the full extent permitted by U.S. federal laws and your state's laws.

The Foundation's business office is located at 809 North 1500 West, Salt Lake City, UT 84116, (801) 596-1887. Email contact links and up to date contact information can be found at the Foundation's website and official page at www.gutenberg.org/contact

Section 4. Information about Donations to the Project Gutenberg Literary Archive Foundation

Project Gutenberg™ depends upon and cannot survive without widespread public support and donations to carry out its mission of increasing the number of public domain and licensed works that can be freely distributed in machine-readable form accessible by the widest array of equipment including outdated equipment. Many small donations (\$1 to \$5,000) are particularly important to maintaining tax exempt status with the IRS.

The Foundation is committed to complying with the laws regulating charities and charitable donations in all 50 states of the United States. Compliance requirements are not uniform and it takes a considerable effort, much paperwork and many fees to meet and keep up with these requirements. We do not solicit donations in locations where we have not received written confirmation of compliance. To SEND DONATIONS or determine the status of compliance for any particular state visit www.gutenberg.org/donate.

While we cannot and do not solicit contributions from states where we have not met the solicitation requirements, we know of no prohibition against accepting unsolicited donations from donors in such states who approach us with offers to donate.

International donations are gratefully accepted, but we cannot make any statements concerning tax treatment of donations received from outside the United States. U.S. laws alone swamp our small staff.

Please check the Project Gutenberg web pages for current donation methods and addresses. Donations are accepted in a number of other ways including checks, online payments and credit card donations. To donate, please visit: www.gutenberg.org/donate

Section 5. General Information About Project Gutenberg™ electronic works

Professor Michael S. Hart was the originator of the Project Gutenberg™ concept of a library of electronic works that could be freely shared with anyone. For forty years, he produced and distributed Project Gutenberg™ eBooks with only a loose network of volunteer support.

Project Gutenberg™ eBooks are often created from several printed editions, all of which are confirmed as not protected by copyright in the U.S. unless a copyright notice is included. Thus, we do not necessarily keep eBooks in compliance with any particular paper edition.

Most people start at our website which has the main PG search facility:

www.gutenberg.org.

This website includes information about Project Gutenberg™, including how to make donations to the Project Gutenberg Literary Archive Foundation, how to help produce our new eBooks, and how to subscribe to our email newsletter to hear about new eBooks.