

The Project Gutenberg eBook of The Brochure Series of Architectural Illustration, vol. 06, No. 12, December 1900, by Various

This ebook is for the use of anyone anywhere in the United States and most other parts of the world at no cost and with almost no restrictions whatsoever. You may copy it, give it away or re-use it under the terms of the Project Gutenberg License included with this ebook or online at [www.gutenberg.org](http://www.gutenberg.org). If you are not located in the United States, you'll have to check the laws of the country where you are located before using this eBook.

Title: The Brochure Series of Architectural Illustration, vol. 06, No. 12, December 1900

Author: Various

Release date: January 9, 2015 [EBook #47922]

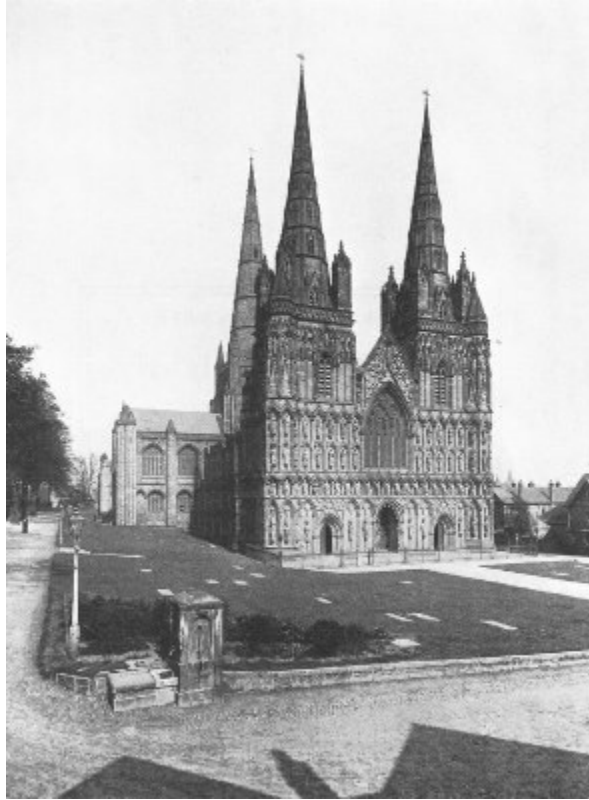
Language: English

Credits: Produced by Juliet Sutherland, Haragos Pál and the Online Distributed Proofreading Team at <http://www.pgdp.net>

\*\*\* START OF THE PROJECT GUTENBERG EBOOK THE BROCHURE SERIES OF ARCHITECTURAL ILLUSTRATION, VOL. 06, NO. 12, DECEMBER 1900 \*\*\*

THE BROCHURE SERIES  
**The Cathedrals of  
England**  
DECEMBER, 1900

---



**PLATE  
XCI**

**LITCHFIELD CATHEDRAL FROM  
NORTHWEST**

---

THE  
**Brochure Series**  
OF ARCHITECTURAL  
ILLUSTRATION.

1900.

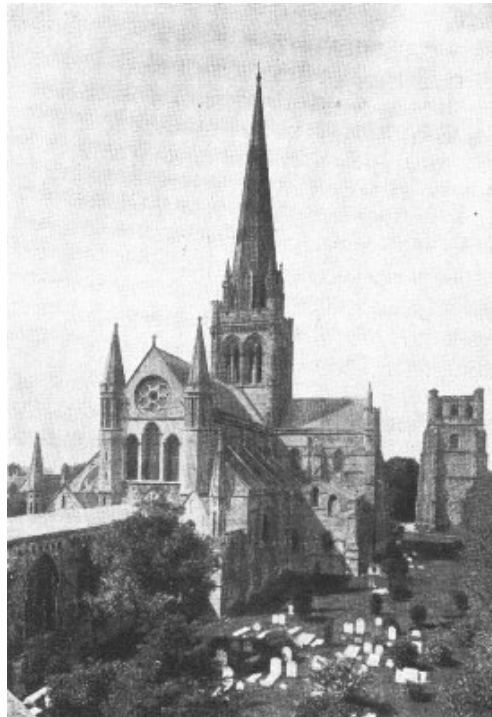
DECEMBER

No. 12.

**THE CATHEDRALS OF ENGLAND**

Such a general survey of the most representative English cathedrals as is undertaken in the present article naturally leaves no space for a detailed consideration of the various diversities of architecture that they present, and future issues of this series will be devoted to illustrating, individually, the various developments of the English Gothic style. The characteristic features of the English Gothic cathedrals, as compared with those of the Continent, and particularly with those in France, are as follows:—

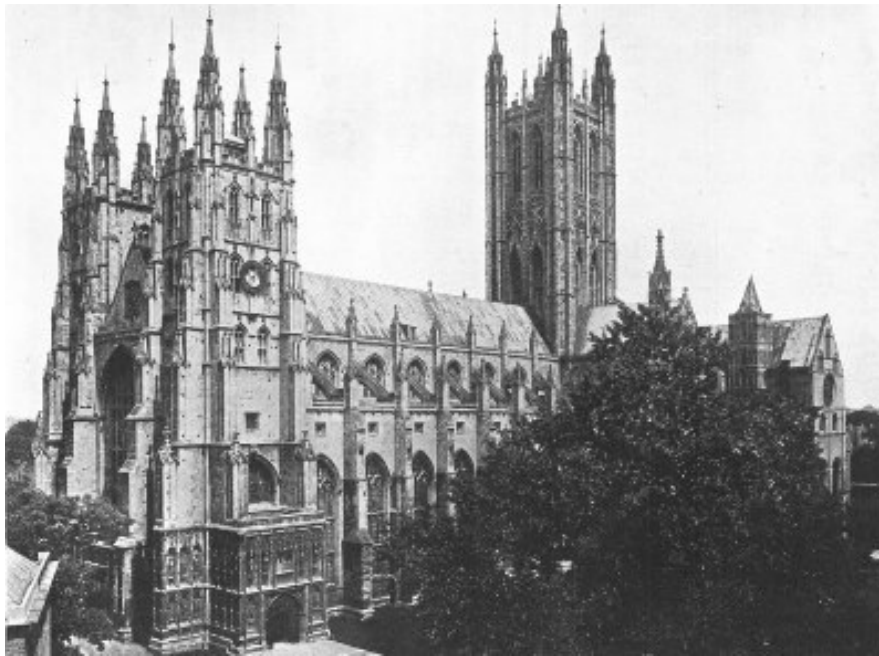
The English minsters are long, narrow and low in contrast with the greater squareness and height of French contemporary churches. The English transepts have bolder projections, and the number of side chapels is smaller. The east end is almost invariably square. The aisles are practically always single; Chichester is the only example to the contrary. The central tower is a predominant feature; and a single western tower is characteristic of English early churches. Flying buttresses, though not uncommon, are not so prominent as in French cathedrals. Doorways are more simple, placed in less important positions, and often provided with a separate elaborate porch, as at Salisbury. Window traceries, though developing along the same lines as in France, finally evolve "Perpendicular" instead of "Flamboyant" tracery. The beautiful fan-tracery vaulting is an important feature of English Gothic, and is peculiar to it. The clustered shaft is a special feature of the style. Great emphasis was placed by the English architects on the development of mouldings; and the generally smaller scale of English work lead to greater refinement and attention to detail in carving.



**CHICHESTER  
CATHEDRAL**

**FROM  
NORTHEAST**

Perhaps the most striking difference between the English and the Continental cathedral, is however, in its situation. Instead of being almost invariably pressed upon and crowded by the streets and shops of the city, the English minster is usually set about with great masses of foliage, and wide stretches of lawn.



**PLATE XCII CANTERBURY CATHEDRAL FROM SOUTHWEST**

The architectural significance of the various constructional dates given in the brief historical synopses which follow, will be made clear by reference to Mr. E. A. Freeman's tabulation of the English styles by dates. [Pg 185]

I. ROMANESQUE.

Saxon	before 1066.
Norman	1066-1195.

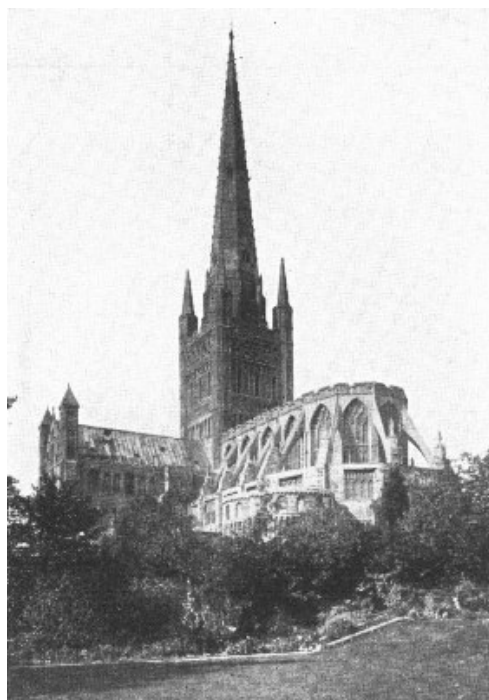
II. GOTHIC.

Early English or "Lancet,"	1189-1300.
Decorated	{ Geometrical } { Flowing } 1300-1377.
Perpendicular	1377-1547.

III. RENAISSANCE.

Including Elizabethan, Georgian, Palladian, etc. 1547 *et seq.*

The last thirty years or so of each period may be described as a time of Transition from one style to the succeeding.



**NORWICH CATHEDRAL FROM EAST**

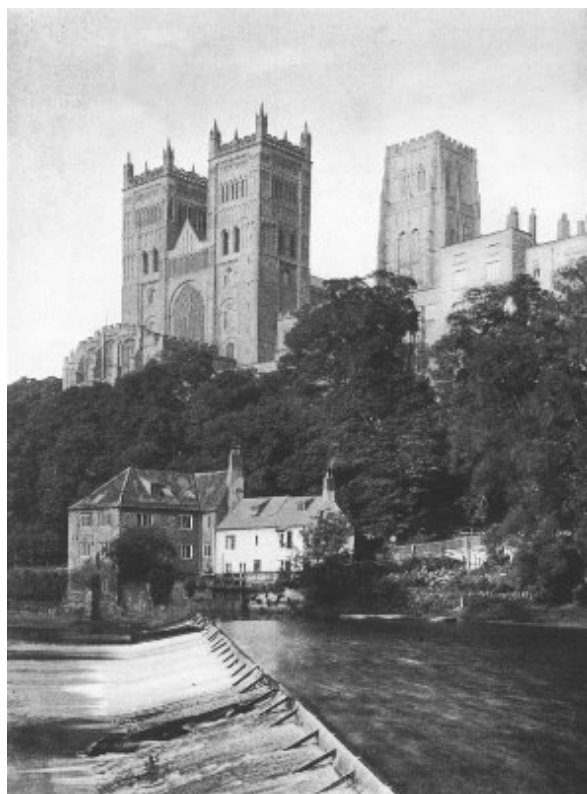
In considering the English cathedrals the Saxon style may be disregarded, as there are no important remains which date prior to the coming of the Norman conquerors; and the only cathedral church of prominence in the Renaissance style is St. Paul's in London.<sup>[1]</sup>



**CANTERBURY CATHEDRAL**

**THE CHOIR**

[Pg 186]

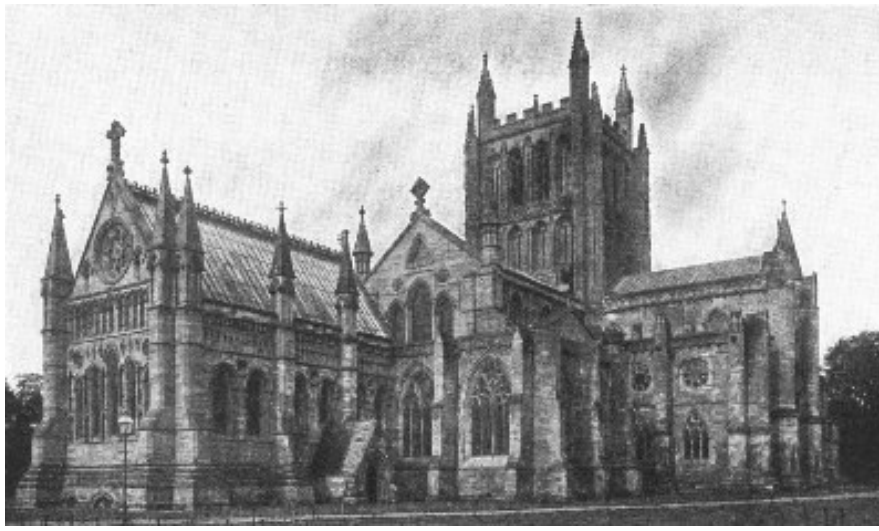


**PLATE  
XCIII**

**DURHAM CATHEDRAL FROM THE  
WEAR RIVER**

Litchfield Cathedral is sometimes styled the "Queen of English minsters," and, though surpassed by other cathedrals in age, size, grandeur of site and elaborate decoration, it has yet claim to the title because of the symmetry, proportion and picturesqueness of its general effect. It is built of red sandstone, and dates mainly from the thirteenth to the fourteenth centuries. The earliest structure on the present site was a Norman church dating from about 1100. The oldest part of the existing building is the lower part of the west half of the choir, erected about 1200. The transepts followed in 1220-40; the nave dates from 1250, and the west front from about 1280, while the Lady-Chapel belongs to the beginning of the fourteenth century. The cathedral close was formerly surrounded by a wall and moat; and in 1643 the cathedral was defended against the Puritans, who battered down the central tower and demolished many of the carvings, monuments and windows. It was, however, restored before the end of the century. The most conspicuous external features are the three beautiful spires and the fine west façade. This façade is one of the most graceful and harmonious in England; and it has the advantage over such a front as that of Peterborough in its organic connection with the rest of the building. It is covered with niches for about one hundred statues, almost all of which are now filled with modern carvings.

[Pg 187]



**HEREFORD CATHEDRAL FROM NORTHEAST**

Chichester Cathedral was originally begun about 1085, completed in 1108 and burned down in 1114. In its present form it is substantially a Transitional Norman building of the twelfth century, with some pointed details introduced after a second fire in 1186. The Lady-Chapel dates from 1288-1304. The spire, erected in the fifteenth century, collapsed in 1861, and has since been rebuilt. The whole edifice has been restored since 1848. The detached Bell Tower, a feature peculiar to Chichester among English cathedrals, is, despite its weather-worn appearance, one of the most recent parts of the building, dating from the fifteenth century.

Canterbury Cathedral, the third church erected on the same site, represents English architectural history from 1070 to 1495; but its general external appearance is that of a magnificent building in the Perpendicular style. The present structure was begun by Laufranc, the first Norman architect, and was finished in 1130. The choir of this Norman cathedral was burned in 1174, and the present choir, in the Transitional style from Norman to Early English, was erected by William of Sens (who may almost be said to have introduced the Pointed style into England), and by his successor, William the Englishman (1174-1180). The old Norman nave and transepts remained intact for two hundred years more, when in 1378-1410 they were replaced by the present Perpendicular structure. The great central tower was added in 1495. The northwest tower is modern, the older tower having been pulled down, with doubtful wisdom, to make room for one to match its southwest neighbor. In spite of its huge proportions the interior of the nave produces a wonderful effect of lightness. The choir, one hundred and twenty feet long, is the longest in England. The great Norman arches, supported by circular and octagonal piers alternately, furnish a striking contrast to the inner portions of the nave.

[Pg 188]



**PLATE XCIV PETERBOROUGH CATHEDRAL: WEST FRONT**

Norwich Cathedral was begun in 1096, and has preserved its original Norman plan more closely than any other in England. The first Bishop of Norwich, Herbert de Losinga, completed the choir and transepts, and began the nave. The latter was finished by his successor about 1140. The clearstory of the choir was rebuilt in 1356-69, and the vaulting of the nave and choir were added in the fifteenth century. In the same century the west front was altered, and the spire rebuilt. The most prominent features of the exterior are the lofty spire and the unusual apsidal termination of the choir.

[Pg 189]

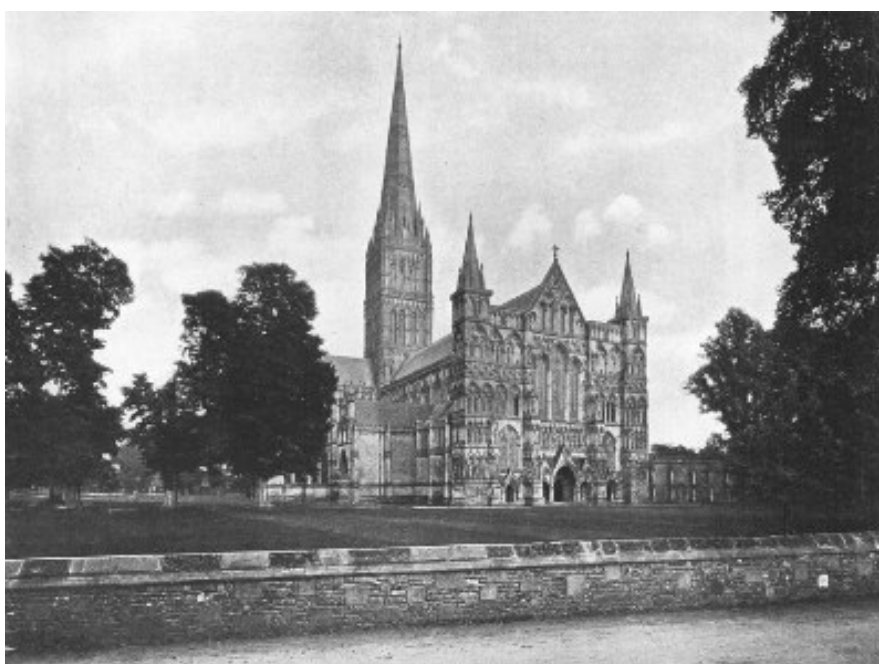


**PETERBOROUGH CATHEDRAL**

**CHOIR**

Durham Cathedral, locally known as "the Abbey," is usually ranked among the six finest English cathedrals, though, apart from its magnificent situation, the first impression made by the exterior scarcely seems to warrant so high a place. The composition of the east end is externally unsatisfactory; and the west front suffers from the difficulty of obtaining a good near view.

The site was first built upon by the monks of Lindisfarne, who, in 999, chose it as a resting place for St. Cuthbert's remains. After the Norman conquest a new and larger church was begun, the choir of which seems to have been completed in 1093-95. The transepts and nave, also in the Norman style, were all finished by 1143. The cloisters and upper part of the central tower are Perpendicular (1400-80). A destructive restoration was carried out in 1778-1800, sweeping away many ancient details, and spoiling the exterior by scraping. Recently the entire building has been restored.



[Pg 190]

**PLATE XCV**

**SALISBURY CATHEDRAL FROM NORTHWEST**

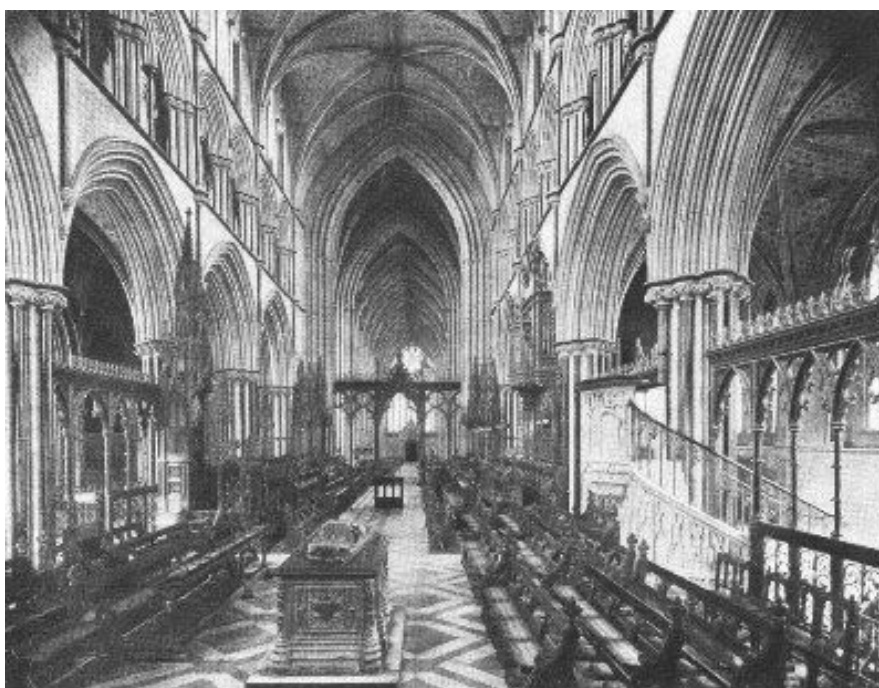
Hereford Cathedral was begun in 1079, and not finished till 1530, and consequently shows an interesting mixture of architectural styles. The nave, south transept and piers of the tower are Norman, the Lady-Chapel is Early English; the north transept was rebuilt between 1250 and 1288; the north porch was erected about 1290. The tower dates from the fourteenth century.

[Pg 191]



**WORCESTER CATHEDRAL**

**FROM SOUTHWEST**



**WORCESTER CATHEDRAL**

**CHOIR**

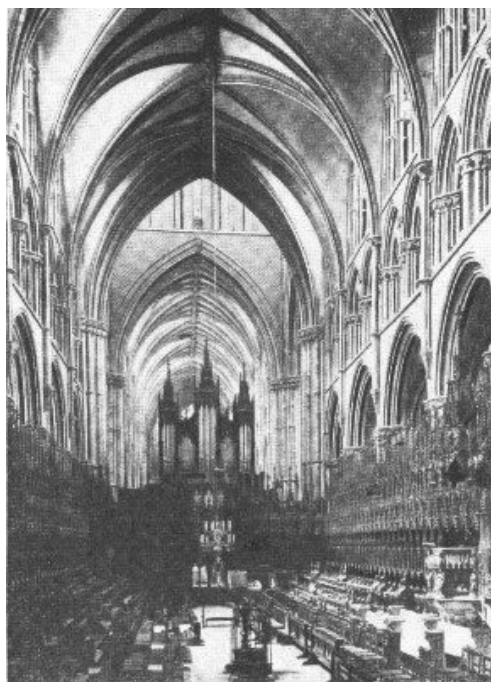
Peterborough Cathedral is one of the most important Norman churches left in England, though at first glance the exterior does not seem to bear out this assertion. The elaborate and somewhat foreign-looking west façade, with its recessed arches, gables and sculptures, is however an Early English addition of about 1220; and forms, as it were, a screen in front of the original west wall. The present building is the third church on this site. The first was destroyed by the Danes; the second was burned in 1116. The oldest part now standing is the choir, consecrated about 1140. The great transept dates from 1155-77, the late-Norman nave from 1177-93, and the west transepts, in the Transitional style, from 1193-1200. A series of uniform Decorated windows was added throughout the church in the fourteenth century. The spires and pinnacles of the flanking turrets of the west façade are of the Decorated and Perpendicular periods. The interior gives an impression of unusual lightness for Norman architecture, an effect enhanced by the color of the stone. In 1643 it suffered severely at the hands of the iconoclastic Puritans. The clearstory and triforium of the nave are impressive in size and effect. The painted wooden ceiling dates from the twelfth century.



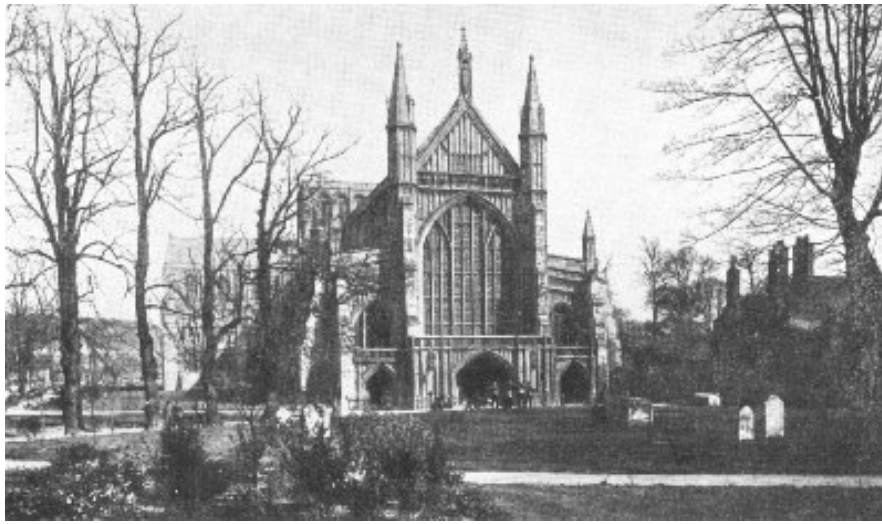


**PLATE XCVI      LINCOLN CATHEDRAL FROM SOUTHWEST**

Salisbury Cathedral is a splendid example of pure Early English, having had the rare advantage of having been begun and finished within a period of forty years, 1220-1260, and is remarkable for the uniformity and harmony of its construction. Mr. Ferguson has pointed out that there is scarcely a trace of foreign influence in the building, the square east end taking the place of the apse of the Norman churches, and fixing the future character of English choirs; and he adds that it is "one of the best proportioned and at the same time most poetic designs of the middle ages." The various parts of the building all unite to lead the eye to the central point,—the richly adorned spire built in 1250, which is the loftiest in England. The sculptures on the beautiful west front were nearly all destroyed by the Puritans, but have recently been replaced. [Pg 193]



**LINCOLN CATHEDRAL      CHOIR**

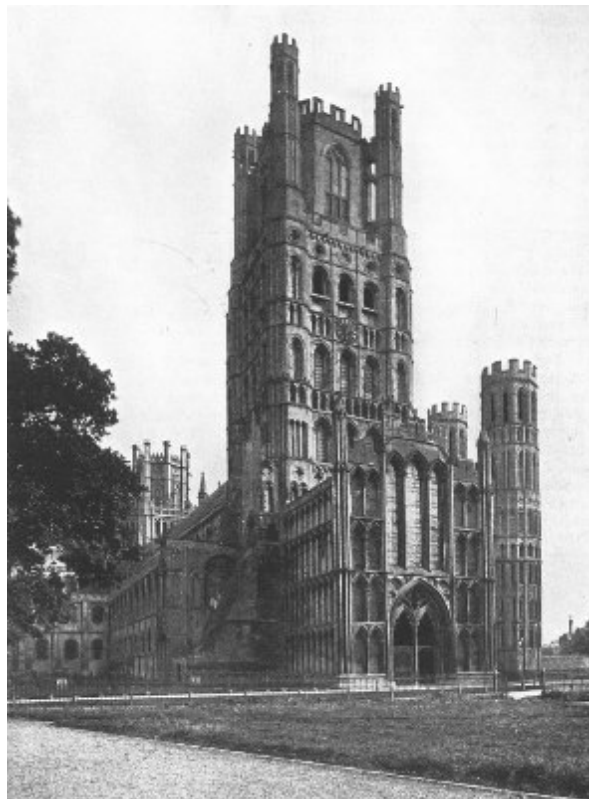


**WINCHESTER CATHEDRAL**

**WEST FRONT**

Worcester Cathedral is in plan a double cross with very short transepts, and with a chapter-house and spacious cloisters on the south side. In general characteristics it is Early English, but includes specimens of all styles from the Norman down to the latest Perpendicular. The oldest parts of the present church are the choir and Lady-Chapel, which date from the first quarter of the thirteenth century. The north side of the nave belongs to the Decorated and the south side to the early Perpendicular period; but they are very similar in general appearance. The central tower shows traces of the transition from Decorated to Perpendicular. In the interior, the choir dates from the purest Early English period, and impresses by its richness and uniformity; and the magnificent groined roof, extending in an unbroken line for 420 feet, is a feature that perhaps no other cathedral can match.

[Pg 194]

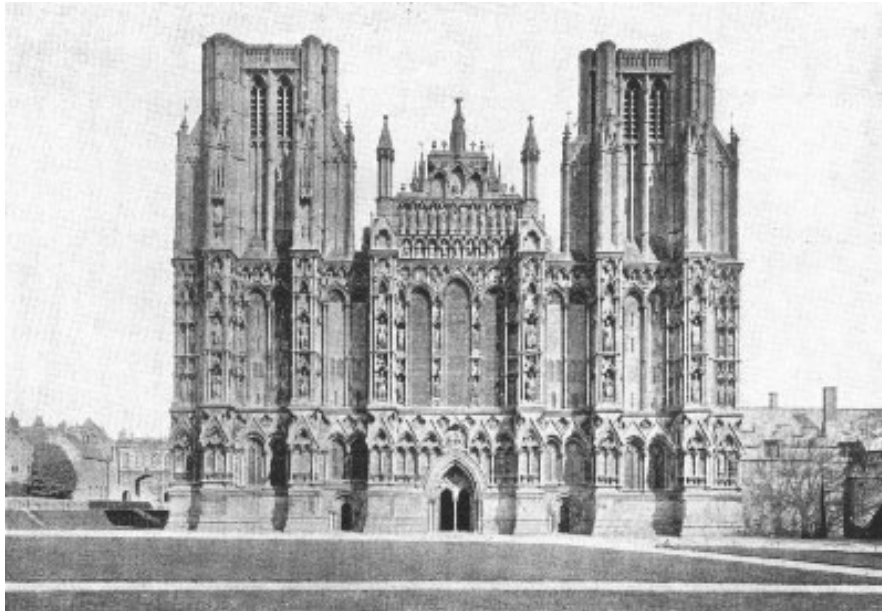


**PLATE XCVII ELY CATHEDRAL: WEST FRONT**

Lincoln Cathedral, splendidly crowning the hill on which the city is built, may perhaps claim to be the finest church in Great Britain. Other cathedrals equal or surpass it in certain points; but in the combination of size, delicacy of detail, effectiveness of both interior and exterior, good preservation and grandeur of position, it has probably no rival. Of the original cathedral, built at the end of the eleventh century, the tower, a portion of the west front, and part of first bay of the nave remain. The Norman cathedral was injured by an earthquake in 1185, and its restoration was at once undertaken by Bishop Hugh, called "St. Hugh of Lincoln" (1186-1200), who finished the choir and east transepts—the earliest piece of Early English work of known date. The west transepts and chapter-house were completed soon after, and the nave, including the west front, by about 1250. The upper story of the central tower, which dates from about 1240-50, was added between 1300 and 1320. The upper parts of the west towers are late Decorated, dating from about 1380. Among the more noteworthy external features are the fine central and west towers, and the west façade, in spite of its mixture of styles and the fact that it is in some degree merely a screen. The choir of the interior is the oldest known example of the Early English style, and is

[Pg 195]

separated from the nave by a decorated screen (1320) surmounted by the organ. Though the vaulting is too low the entire interior is harmonious and imposing.



**WELLS CATHEDRAL**

**WEST FRONT**

Winchester Cathedral is a stately edifice, incorporating every style of English architecture from the Norman to the Perpendicular. It was founded on a more ancient site in 1079. The choir and transepts were finished in 1093. The conversion of the nave from Norman to Perpendicular was begun by Bishop Edington before 1366, and the whole was completed in 1486. The builder of the greater part of the nave was Bishop William of Wickham, the renowned architect and statesman, who occupied the See from 1366 to 1404. The church is the longest in England, measuring 560 feet in all. The west façade, with its spacious portal, was begun in 1350, finished in the fifteenth century, and restored in 1860.



**PLATE XCVIII**

**YORK CATHEDRAL: WEST FRONT**

Ely Cathedral is architecturally one of the most interesting in England. It occupies the site of an abbey founded by St. Ethelreda in 673. The existing building was begun in 1083 by the first Norman abbot, and the last half at least was completed in its original form when the see of Ely was created in 1109. The west part of the nave, including the west tower, was finished about 1180, and the west porch was added before 1215. The east end was added between 1229 and 1254. The central tower, which belonged to the original church, fell in 1322, and advantage was taken of this opportunity to construct the beautiful decorated octagon. A new spire was erected on the west tower at the end of the fourteenth century, the weight of which may have caused the collapse of the northwest transept, though some authorities think the latter was never finished. The whole building has been carefully restored. The most striking feature of the edifice is the castellated west tower, which is unlike any other cathedral tower in England, and to some extent suggests military rather than ecclesiastical architecture. The greater part of this tower is Transitional Norman (117-489), but the octagonal top and turrets were added in the decorated period.

[Pg 196]

[Pg 197]



**WELLS CATHEDRAL**

**CHOIR**

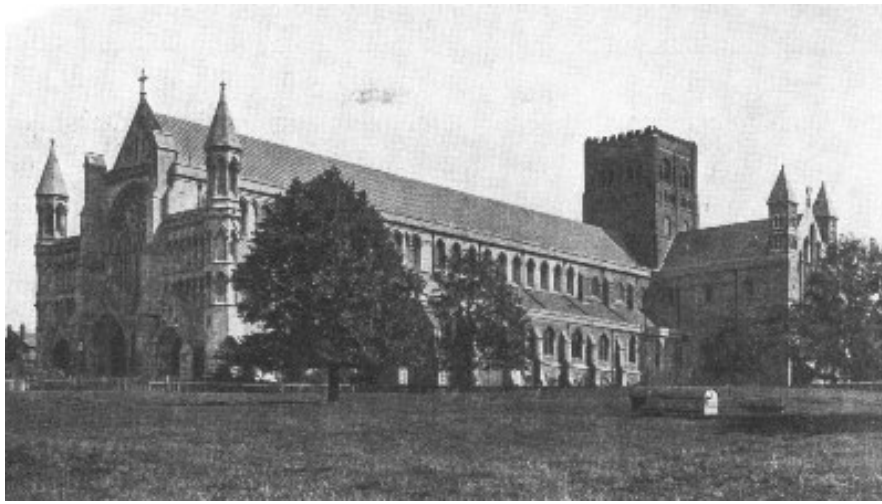
Wells Cathedral is, in its present condition, predominantly an Early English building, of the first half of the thirteenth century. It is the third church on the same site, and the foundation of the present edifice is commonly attributed to Bishop Joceline, 1206-1242. The church as he designed it was finished at the end of the thirteenth century. Thereafter a complete transformation of the east part was undertaken, the first step being the construction of the Lady-Chapel, about 1320, while the Presbytery dates from about 1350. The upper parts of the central tower also belong to the early fourteenth century. The upper parts of the west towers and cloisters are Perpendicular. The beautiful west façade, elaborately adorned with arcading and sculptures, is, like the west front of Lincoln, architecturally a mere mask. The choir, one of the most beautiful in England, is Early or Geometrical Decorated in the general effect.

[Pg 198]



**PLATE XCIX GLOUCESTER CATHEDRAL FROM SOUTHWEST**

[Pg 199]



**ST. ALBAN'S ABBEY**

**FROM SOUTHWEST**

York Cathedral is one of the largest and grandest of English minsters. The present structure is the third on the site, and was built by the first Norman bishop. The choir was rebuilt by Archbishop Roger, 1154-81, the south transept by Archbishop Gray in 1215-55, and the north transept about the same time, while the Norman nave was gradually replaced by the present one between 1290 and 1345. The Lady-Chapel was added in 1360-73, and the present choir substituted for Archbishop Roger's before 1400. The towers date from the fifteenth century, and the edifice as thus rebuilt was reconsecrated in 1472. In its present form, therefore, the minster shows examples of the Early English Decorated, and early and late Perpendicular styles. The most striking features of the exterior are the noble west façade in the Decorated and the imposing central tower in the Perpendicular style.

Gloucester Cathedral stands on a site consecrated to religious purposes since the seventh century. The church was raised to cathedral dignity in 1541, having previously been included in the diocese of Worcester. In its present form the body of the church is the work of Abbot Serlo at the end of the eleventh century; but this Norman core was most skilfully altered and recased, chiefly in the fourteenth century, and in general external appearance is thoroughly Perpendicular.

St. Albans Abbey, which was raised to the dignity of a cathedral in 1877, is one of the finest and largest churches in England. The earliest parts of the existing building date from the eleventh century; the choir was built in the thirteenth, and the Lady-Chapel in the fourteenth. The fine tower is Norman. An extensive, and not especially successful, restoration of the buildings including a new Early English west front with a large decorated window, has recently been completed.

Exeter Cathedral, though comparatively small and unimposing, is, in virtue of its details, one of the most admirable examples in England of the Geometrical Decorated style. The oldest existing parts of the building are the transeptal towers, dating from the early part of the twelfth century, almost unique features in English churches. The rest of the cathedral was built, or, at any rate, altered from Norman to Decorated, between 1280 and 1370, mainly from designs of Bishop Quivil. The elaborate west façade was added by Bishop Brantyngham (1370-1394). The whole has been carefully restored.

[1] St. Paul's Cathedral was illustrated in THE BROCHURE SERIES for November, 1900.



\*\*\* END OF THE PROJECT GUTENBERG EBOOK THE BROCHURE SERIES OF ARCHITECTURAL ILLUSTRATION, VOL. 06, NO. 12, DECEMBER 1900 \*\*\*

Updated editions will replace the previous one—the old editions will be renamed.

Creating the works from print editions not protected by U.S. copyright law means that no one owns a United States copyright in these works, so the Foundation (and you!) can copy and distribute it in the United States without permission and without paying copyright royalties. Special rules, set forth in the General Terms of Use part of this license, apply to copying and distributing Project Gutenberg™ electronic works to protect the PROJECT GUTENBERG™ concept and trademark. Project Gutenberg is a registered trademark, and may not be used if you charge for an eBook, except by following the terms of the trademark license, including paying royalties for use of the Project Gutenberg trademark. If you do not charge anything for copies of this eBook, complying with the trademark license is very easy. You may use this eBook for nearly any purpose such as creation of derivative works, reports, performances and research. Project Gutenberg eBooks may be modified and printed and given away—you may do practically ANYTHING in the United States with eBooks not protected by U.S. copyright law. Redistribution is subject to the trademark license, especially commercial redistribution.

**START: FULL LICENSE**  
**THE FULL PROJECT GUTENBERG LICENSE**  
PLEASE READ THIS BEFORE YOU DISTRIBUTE OR USE THIS WORK

To protect the Project Gutenberg™ mission of promoting the free distribution of electronic works, by using or distributing this work (or any other work associated in any way with the phrase “Project Gutenberg”), you agree to comply with all the terms of the Full Project Gutenberg™ License available with this file or online at [www.gutenberg.org/license](http://www.gutenberg.org/license).

**Section 1. General Terms of Use and Redistributing Project Gutenberg™ electronic works**

1.A. By reading or using any part of this Project Gutenberg™ electronic work, you indicate that you have read, understand, agree to and accept all the terms of this license and intellectual property (trademark/copyright) agreement. If you do not agree to abide by all the terms of this agreement, you must cease using and return or destroy all copies of Project Gutenberg™ electronic works in your possession. If you paid a fee for obtaining a copy of or access to a Project Gutenberg™ electronic work and you do not agree to be bound by the terms of this agreement, you may obtain a refund from the person or entity to whom you paid the fee as set forth in paragraph 1.E.8.

1.B. “Project Gutenberg” is a registered trademark. It may only be used on or associated in any way with an electronic work by people who agree to be bound by the terms of this agreement. There are a few things that you can do with most Project Gutenberg™ electronic works even without complying with the full terms of this agreement. See paragraph 1.C below. There are a lot of things you can do with Project Gutenberg™ electronic works if you follow the terms of this agreement and help preserve free future access to Project Gutenberg™ electronic works. See paragraph 1.E below.

1.C. The Project Gutenberg Literary Archive Foundation (“the Foundation” or PGLAF), owns a compilation copyright in the collection of Project Gutenberg™ electronic works. Nearly all the individual works in the collection are in the public domain in the United States. If an individual work is unprotected by copyright law in the United States and you are located in the United States, we do not claim a right to prevent you from copying, distributing, performing, displaying or creating derivative works based on the work as long as all references to Project Gutenberg are removed. Of course, we hope that you will support the Project Gutenberg™ mission of promoting free access to electronic works by freely sharing Project Gutenberg™ works in compliance with the terms of this agreement for keeping the Project Gutenberg™ name associated with the work. You can easily comply with the terms of this agreement by keeping this work in the same format with its attached full Project Gutenberg™ License when you share it without charge with others.

1.D. The copyright laws of the place where you are located also govern what you can do with this work. Copyright laws in most countries are in a constant state of change. If you are outside the United States, check the laws of your country in addition to the terms of this agreement before downloading, copying, displaying, performing, distributing or creating derivative works based on this work or any other Project Gutenberg™ work. The Foundation makes no representations concerning the copyright status of any work in any country other than the United States.

1.E. Unless you have removed all references to Project Gutenberg:

1.E.1. The following sentence, with active links to, or other immediate access to, the full Project Gutenberg™ License must appear prominently whenever any copy of a Project Gutenberg™ work (any work on which the phrase “Project Gutenberg” appears, or with which the phrase “Project Gutenberg” is associated) is accessed, displayed, performed, viewed, copied or distributed:

This eBook is for the use of anyone anywhere in the United States and most other parts of the world at no cost and with almost no restrictions whatsoever. You may copy it, give it away or re-use it under the terms of the Project Gutenberg License included with this eBook or online at [www.gutenberg.org](http://www.gutenberg.org). If you are not located in the United States, you will have to check the laws of the country where you are located before using this eBook.

1.E.2. If an individual Project Gutenberg™ electronic work is derived from texts not protected by U.S. copyright law (does not contain a notice indicating that it is posted with permission of the copyright holder), the work can be copied and distributed to anyone in the United States without paying any fees or charges. If you are redistributing or providing access to a work with the phrase “Project Gutenberg” associated with or appearing on the work, you must comply either with the requirements of paragraphs 1.E.1 through 1.E.7 or obtain permission for the use of the work and the Project Gutenberg™ trademark as set forth in paragraphs 1.E.8 or 1.E.9.

1.E.3. If an individual Project Gutenberg™ electronic work is posted with the permission of the copyright holder, your use and distribution must comply with both paragraphs 1.E.1 through 1.E.7 and any additional terms imposed by the copyright holder. Additional terms will be linked to the Project Gutenberg™ License for all works posted with the permission of the copyright holder found at the beginning of this work.

1.E.4. Do not unlink or detach or remove the full Project Gutenberg™ License terms from this work, or any files containing a part of this work or any other work associated with Project Gutenberg™.

1.E.5. Do not copy, display, perform, distribute or redistribute this electronic work, or any part of this electronic work, without prominently displaying the sentence set forth in paragraph 1.E.1 with active links or immediate access to the full terms of the Project Gutenberg™ License.

1.E.6. You may convert to and distribute this work in any binary, compressed, marked up, nonproprietary or proprietary form, including any word processing or hypertext form. However, if you provide access to or distribute copies of a Project Gutenberg™ work in a format other than “Plain Vanilla ASCII” or other format used in the official version posted on the official Project Gutenberg™ website ([www.gutenberg.org](http://www.gutenberg.org)), you must, at no additional cost, fee or expense to the user, provide a copy, a means of exporting a copy, or a means of obtaining a copy upon request, of the work in its original “Plain Vanilla ASCII” or other form. Any alternate format must include the full Project Gutenberg™ License as specified in paragraph 1.E.1.

1.E.7. Do not charge a fee for access to, viewing, displaying, performing, copying or distributing any Project Gutenberg™ works unless you comply with paragraph 1.E.8 or 1.E.9.

1.E.8. You may charge a reasonable fee for copies of or providing access to or distributing Project Gutenberg™ electronic works provided that:

- You pay a royalty fee of 20% of the gross profits you derive from the use of Project Gutenberg™ works calculated using the method you already use to calculate your applicable taxes. The fee is owed to the owner of the Project Gutenberg™ trademark, but he has agreed to donate royalties under this paragraph to the Project Gutenberg Literary Archive Foundation. Royalty payments must be paid within 60 days following each date on which you prepare (or are legally required to prepare) your periodic tax returns. Royalty payments should be clearly marked as such and sent to the Project Gutenberg Literary Archive Foundation at the address specified in Section 4, “Information about donations to the Project Gutenberg Literary Archive Foundation.”
- You provide a full refund of any money paid by a user who notifies you in writing (or by e-mail) within 30 days of receipt that s/he does not agree to the terms of the full Project Gutenberg™ License. You must require such a user to return or destroy all copies of the works possessed in a physical medium and discontinue all use of and all access to other copies of Project Gutenberg™ works.
- You provide, in accordance with paragraph 1.F.3, a full refund of any money paid for a work or a replacement copy, if a defect in the electronic work is discovered and reported to you within 90 days of receipt of the work.
- You comply with all other terms of this agreement for free distribution of Project Gutenberg™ works.

1.E.9. If you wish to charge a fee or distribute a Project Gutenberg™ electronic work or

group of works on different terms than are set forth in this agreement, you must obtain permission in writing from the Project Gutenberg Literary Archive Foundation, the manager of the Project Gutenberg™ trademark. Contact the Foundation as set forth in Section 3 below.

1.F.

1.F.1. Project Gutenberg volunteers and employees expend considerable effort to identify, do copyright research on, transcribe and proofread works not protected by U.S. copyright law in creating the Project Gutenberg™ collection. Despite these efforts, Project Gutenberg™ electronic works, and the medium on which they may be stored, may contain “Defects,” such as, but not limited to, incomplete, inaccurate or corrupt data, transcription errors, a copyright or other intellectual property infringement, a defective or damaged disk or other medium, a computer virus, or computer codes that damage or cannot be read by your equipment.

1.F.2. LIMITED WARRANTY, DISCLAIMER OF DAMAGES - Except for the “Right of Replacement or Refund” described in paragraph 1.F.3, the Project Gutenberg Literary Archive Foundation, the owner of the Project Gutenberg™ trademark, and any other party distributing a Project Gutenberg™ electronic work under this agreement, disclaim all liability to you for damages, costs and expenses, including legal fees. YOU AGREE THAT YOU HAVE NO REMEDIES FOR NEGLIGENCE, STRICT LIABILITY, BREACH OF WARRANTY OR BREACH OF CONTRACT EXCEPT THOSE PROVIDED IN PARAGRAPH 1.F.3. YOU AGREE THAT THE FOUNDATION, THE TRADEMARK OWNER, AND ANY DISTRIBUTOR UNDER THIS AGREEMENT WILL NOT BE LIABLE TO YOU FOR ACTUAL, DIRECT, INDIRECT, CONSEQUENTIAL, PUNITIVE OR INCIDENTAL DAMAGES EVEN IF YOU GIVE NOTICE OF THE POSSIBILITY OF SUCH DAMAGE.

1.F.3. LIMITED RIGHT OF REPLACEMENT OR REFUND - If you discover a defect in this electronic work within 90 days of receiving it, you can receive a refund of the money (if any) you paid for it by sending a written explanation to the person you received the work from. If you received the work on a physical medium, you must return the medium with your written explanation. The person or entity that provided you with the defective work may elect to provide a replacement copy in lieu of a refund. If you received the work electronically, the person or entity providing it to you may choose to give you a second opportunity to receive the work electronically in lieu of a refund. If the second copy is also defective, you may demand a refund in writing without further opportunities to fix the problem.

1.F.4. Except for the limited right of replacement or refund set forth in paragraph 1.F.3, this work is provided to you ‘AS-IS’, WITH NO OTHER WARRANTIES OF ANY KIND, EXPRESS OR IMPLIED, INCLUDING BUT NOT LIMITED TO WARRANTIES OF MERCHANTABILITY OR FITNESS FOR ANY PURPOSE.

1.F.5. Some states do not allow disclaimers of certain implied warranties or the exclusion or limitation of certain types of damages. If any disclaimer or limitation set forth in this agreement violates the law of the state applicable to this agreement, the agreement shall be interpreted to make the maximum disclaimer or limitation permitted by the applicable state law. The invalidity or unenforceability of any provision of this agreement shall not void the remaining provisions.

1.F.6. INDEMNITY - You agree to indemnify and hold the Foundation, the trademark owner, any agent or employee of the Foundation, anyone providing copies of Project Gutenberg™ electronic works in accordance with this agreement, and any volunteers associated with the production, promotion and distribution of Project Gutenberg™ electronic works, harmless from all liability, costs and expenses, including legal fees, that arise directly or indirectly from any of the following which you do or cause to occur: (a) distribution of this or any Project Gutenberg™ work, (b) alteration, modification, or additions or deletions to any Project Gutenberg™ work, and (c) any Defect you cause.

## **Section 2. Information about the Mission of Project Gutenberg™**

Project Gutenberg™ is synonymous with the free distribution of electronic works in formats readable by the widest variety of computers including obsolete, old, middle-aged and new computers. It exists because of the efforts of hundreds of volunteers and donations from people in all walks of life.

Volunteers and financial support to provide volunteers with the assistance they need are critical to reaching Project Gutenberg™’s goals and ensuring that the Project Gutenberg™ collection will remain freely available for generations to come. In 2001, the Project Gutenberg Literary Archive Foundation was created to provide a secure and permanent future for Project Gutenberg™ and future generations. To learn more about the Project Gutenberg Literary Archive Foundation and how your efforts and donations can help, see Sections 3 and 4 and the Foundation information page at [www.gutenberg.org](http://www.gutenberg.org).

## **Section 3. Information about the Project Gutenberg Literary Archive Foundation**



The Project Gutenberg Literary Archive Foundation is a non-profit 501(c)(3) educational corporation organized under the laws of the state of Mississippi and granted tax exempt status by the Internal Revenue Service. The Foundation's EIN or federal tax identification number is 64-6221541. Contributions to the Project Gutenberg Literary Archive Foundation are tax deductible to the full extent permitted by U.S. federal laws and your state's laws.

The Foundation's business office is located at 809 North 1500 West, Salt Lake City, UT 84116, (801) 596-1887. Email contact links and up to date contact information can be found at the Foundation's website and official page at [www.gutenberg.org/contact](http://www.gutenberg.org/contact)

#### **Section 4. Information about Donations to the Project Gutenberg Literary Archive Foundation**

Project Gutenberg™ depends upon and cannot survive without widespread public support and donations to carry out its mission of increasing the number of public domain and licensed works that can be freely distributed in machine-readable form accessible by the widest array of equipment including outdated equipment. Many small donations (\$1 to \$5,000) are particularly important to maintaining tax exempt status with the IRS.

The Foundation is committed to complying with the laws regulating charities and charitable donations in all 50 states of the United States. Compliance requirements are not uniform and it takes a considerable effort, much paperwork and many fees to meet and keep up with these requirements. We do not solicit donations in locations where we have not received written confirmation of compliance. To SEND DONATIONS or determine the status of compliance for any particular state visit [www.gutenberg.org/donate](http://www.gutenberg.org/donate).

While we cannot and do not solicit contributions from states where we have not met the solicitation requirements, we know of no prohibition against accepting unsolicited donations from donors in such states who approach us with offers to donate.

International donations are gratefully accepted, but we cannot make any statements concerning tax treatment of donations received from outside the United States. U.S. laws alone swamp our small staff.

Please check the Project Gutenberg web pages for current donation methods and addresses. Donations are accepted in a number of other ways including checks, online payments and credit card donations. To donate, please visit: [www.gutenberg.org/donate](http://www.gutenberg.org/donate)

#### **Section 5. General Information About Project Gutenberg™ electronic works**

Professor Michael S. Hart was the originator of the Project Gutenberg™ concept of a library of electronic works that could be freely shared with anyone. For forty years, he produced and distributed Project Gutenberg™ eBooks with only a loose network of volunteer support.

Project Gutenberg™ eBooks are often created from several printed editions, all of which are confirmed as not protected by copyright in the U.S. unless a copyright notice is included. Thus, we do not necessarily keep eBooks in compliance with any particular paper edition.

Most people start at our website which has the main PG search facility: [www.gutenberg.org](http://www.gutenberg.org).

This website includes information about Project Gutenberg™, including how to make donations to the Project Gutenberg Literary Archive Foundation, how to help produce our new eBooks, and how to subscribe to our email newsletter to hear about new eBooks.