

## The Project Gutenberg eBook of Insects and Diseases of Trees in the South, by Anonymous

This ebook is for the use of anyone anywhere in the United States and most other parts of the world at no cost and with almost no restrictions whatsoever. You may copy it, give it away or re-use it under the terms of the Project Gutenberg License included with this ebook or online at [www.gutenberg.org](http://www.gutenberg.org). If you are not located in the United States, you'll have to check the laws of the country where you are located before using this eBook.

Title: Insects and Diseases of Trees in the South

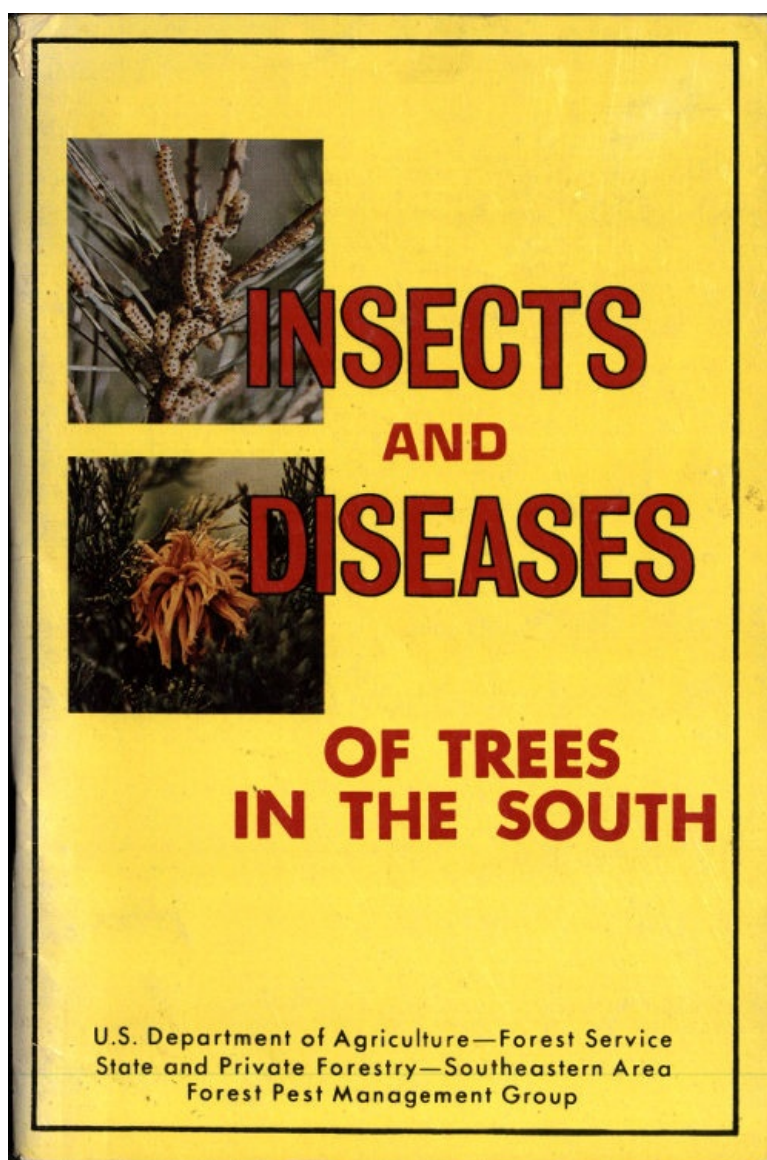
Author: Anonymous

Release date: December 1, 2015 [EBook #50584]

Language: English

Credits: Produced by Stephen Hutcheson, Dave Morgan and the Online Distributed Proofreading Team at <http://www.pgdp.net>

\*\*\* START OF THE PROJECT GUTENBERG EBOOK INSECTS AND DISEASES OF TREES IN THE SOUTH \*\*\*



**INSECTS  
AND  
DISEASES  
OF TREES**

# IN THE SOUTH

U.S. Department of Agriculture—Forest Service  
State and Private Forestry—Southeastern Area  
Forest Pest Management Group

## INTRODUCTION

This publication has been prepared to assist forest managers and homeowners in identifying pests of southern trees. The insects and diseases discussed are the more common ones attacking forest and ornamental trees. Prompt identification and treatment of these pests may mean the difference between losing or saving a valuable shade tree. Underlying all successful forest and ornamental pest control efforts, however, is the necessity to keep trees in a healthy, vigorous condition.

We have attempted to include pictures of the damage as well as pictures of the damage-causing organism or stage. Chemical suppression recommendations are not included in this publication. For pesticide information contact the local State or Federal extension specialist, forester, entomologist, or pathologist.

Credit for some of the pictures in this guide goes to the Southern and Southeastern Forest Experiment Stations and universities. We acknowledge the help of the Forest Pest Management field personnel who assisted in compiling this booklet.

## TABLE OF CONTENTS

### INSECTS

#### Hardwood Insects

##### Defoliators

<a href="#">Elm Spanworm</a>	1
<a href="#">Fall Cankerworm</a>	2
<a href="#">A Looper</a>	3
<a href="#">Eastern Tent Caterpillar</a>	4
<a href="#">Forest Tent Caterpillar</a>	5
<a href="#">Fall Webworm</a>	6
<a href="#">Oak Leaf Tier</a>	7
<a href="#">Variable Oakleaf Caterpillar</a>	8
<a href="#">Locust Leafminer</a>	9
<a href="#">Cottonwood Leaf Beetle</a>	10
<a href="#">Walkingstick</a>	11
<a href="#">Gypsy Moth</a>	12

##### Bark Beetles and Borers

<a href="#">Hickory Bark Beetle</a>	13
<a href="#">Smaller European Elm Bark Beetle</a>	14
<a href="#">Columbian Timber Beetle</a>	15
<a href="#">Cottonwood Twig Borer</a>	16
<a href="#">Cottonwood Borer</a>	17
<a href="#">White Oak Borer</a>	18
<a href="#">Red Oak Borer</a>	19
<a href="#">Carpenterworm</a>	20

#### Conifer Insects

##### Defoliators

<a href="#">Pine Webworm</a>	21
<a href="#">Bagworm</a>	22
<a href="#">Pine Colaspis</a>	23
<a href="#">Pine Sawfly</a>	24
<a href="#">Arkansas Pine Sawfly</a>	25
<a href="#">Virginia Pine Sawfly</a>	26
<a href="#">Redheaded Pine Sawfly</a>	27
<a href="#">Texas Leaf Cutting Ant</a>	28

##### Bark Beetles and Borers

<a href="#">Southern Pine Beetle</a>	29
<a href="#">Ips Engraver Beetles</a>	30
<a href="#">Black Turpentine Beetle</a>	31
<a href="#">Ambrosia Beetle</a>	32
<a href="#">Southern Pine Sawyers</a>	33

##### Meristem Feeders

<a href="#">Nantucket Pine Tip Moth</a>	34
<a href="#">Pales Weevil</a>	35

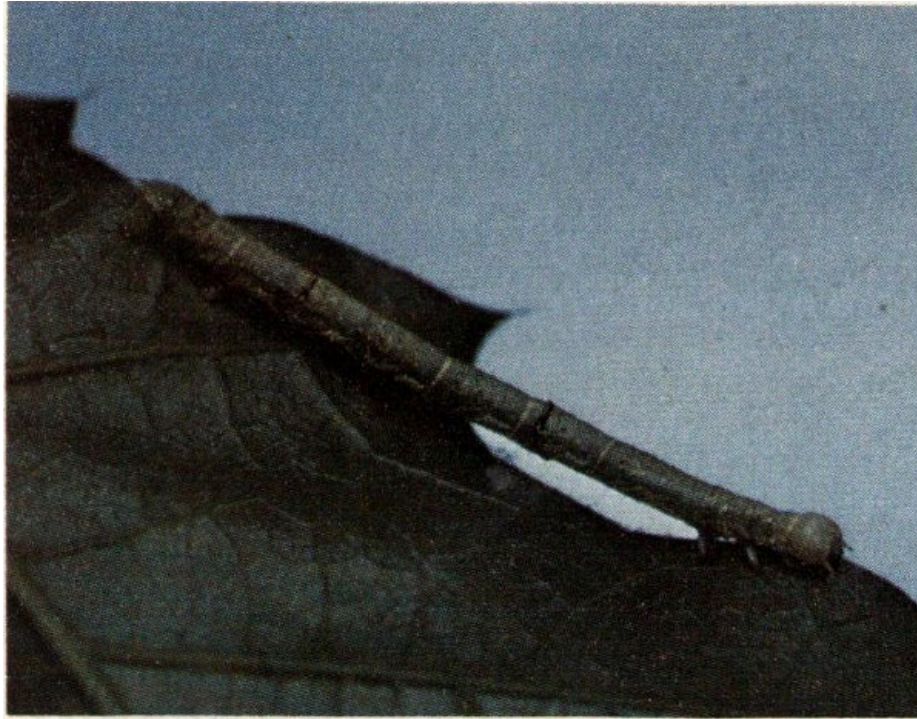
<a href="#">White Pine Weevil</a>	36
<a href="#">Pitch Eating Weevil</a>	37
<a href="#">Deodar Weevil</a>	38
<a href="#">Coneworms</a>	39
<a href="#">Pine Seedworms</a>	40
<b>Sapsucking Insects</b>	
<a href="#">Balsam Woolly Aphid</a>	41
<b>DISEASES</b>	
<b>Conifer Diseases</b>	
<b>Foliage</b>	
<a href="#">Needle Cast</a>	42
<a href="#">Brown Spot</a>	43
<a href="#">Needle Rust</a>	44
<a href="#">Cedar Apple Rust</a>	45
<a href="#">Cedar Blight</a>	46
<b>Stem, Branch, Cone</b>	
<a href="#">Southern Fusiform Rust</a>	47
<a href="#">White Pine Blister Rust</a>	48
<a href="#">Comandra Blister Rust</a>	49
<a href="#">Eastern Gall Rust</a>	50
<a href="#">Cone Rust</a>	51
<a href="#">Pitch Canker</a>	52
<a href="#">Wood Decay</a>	53
<a href="#">Red Heart</a>	54
<b>Root and Butt Rots</b>	
<a href="#">Annosus Root Rot</a>	55
<a href="#">Brown Cubical Rot</a>	56
<a href="#">Red Root and Butt Rot</a>	57
<a href="#">Littleleaf Disease</a>	58
<b>Hardwood Diseases</b>	
<b>Foliage and Twig</b>	
<a href="#">Sycamore Anthracnose</a>	59
<a href="#">Walnut Anthracnose</a>	60
<a href="#">Oak Anthracnose</a>	61
<a href="#">Dogwood Anthracnose</a>	62
<a href="#">Cottonwood Rust</a>	63
<a href="#">Black Knot of Cherry</a>	64
<b>Stem and Canker</b>	
<a href="#">Nectria Canker</a>	65
<a href="#">Strumella Canker</a>	66
<a href="#">Spiculosa Canker</a>	67
<a href="#">Irpex Canker</a>	68
<a href="#">Hispidus Canker</a>	69
<a href="#">Botryosphaeria Canker</a>	70
<a href="#">Septoria Canker</a>	71
<a href="#">Cytospora Canker</a>	72
<a href="#">Chestnut Blight</a>	73
<b>Vascular Wilts</b>	
<a href="#">Oak Wilt</a>	74
<a href="#">Dutch Elm Disease</a>	75
<a href="#">Elm Phloem Necrosis</a>	76
<a href="#">Mimosa Wilt</a>	77
<a href="#">Verticillium Wilt</a>	78
<b>Root and Butt Rots</b>	
<a href="#">Armillaria Root Rot</a>	79
<a href="#">Cylindrocladium Root Rot</a>	80
<a href="#">Lucidus Root and Butt Rot</a>	81

## INSECTS

### ELM SPANWORM, *Ennomos subsignarius* (Hbn.)

The elm spanworm is a native insect which is widely distributed over the eastern half of the United States and Canada from Nova Scotia south to Georgia and west to Colorado. The most widespread outbreak on record occurred during the period 1954-1963 when over one million acres of hardwood forests were defoliated in the mountains of western North Carolina, eastern Tennessee and northern Georgia. The elm spanworm feeds upon hickories and a variety of hardwoods; white oak, chestnut oak, and northern red oak are the species most heavily defoliated in the Appalachians. Repeated defoliation causes growth loss, reduces mast crops, and will eventually

kill the tree.



***Sixth instar elm spanworm larva.***

Eggs are laid in masses of 12 to 200 on the undersides of host tree branches in early July. Winter is spent in the egg stage. Larvae hatch in early spring when foliage opens. The larval stage is an “inchworm” or “looper”, approximately 1½ inches long when mature. Larval coloring varies from green or light brown to black, depending upon population density. The typical color of the larva in heavy populations is dark brown to black, with a dark-red head, legs, and anal shield. The larvae feed for about 1½ months, and then pupate in a loose cocoon for six to ten days. The adult, a snow-white moth, emerges in late June or early July. There is one generation per year.

Natural enemies help keep populations of the elm spanworm in check. One of the most important is *Telenomus alsophilae*, a tiny wasp which parasitizes eggs. Persistent outbreaks on high-value stands may require treatment with chemicals.



***Elm span worms feeding on oak.***

### **FALL CANKERWORM, *Alsophila pometaria* (Harris)**

The fall cankerworm is widespread in the northern part of the United States, ranging south through the Appalachian Mountains to North Carolina. Larvae defoliate many species of hardwoods, but in the South seem to

prefer oaks, hickories, and ash.



***Mature fall cankerworm larva.***

The winged male and wingless female adults emerge on mild days in November and December and mate. Females lay 6-300 eggs in neatly arranged masses encircling small branches and twigs. The pale green larvae hatch in late April or early May. As they mature they may remain light green, or change to a very dark brownish-green depending on the host. Newly hatched inch-worms (larvae) of the fall cankerworm chew small holes in expanding leaves of their hosts, or may completely skeletonize the leaves. Mature larvae consume all but the mid-rib and major veins of the leaf. Feeding is usually completed in four to five weeks, at which time larvae drop to the ground to pupate in the soil.

Cold, wet weather during the early larval period, and parasitization, are responsible for sudden declines in established populations. Chemical control has also been effective. A small wasp, *Telenomus alsophilae* Viereck, has caused a sharp decline in outbreaks of cankerworm populations. Usually, however, outbreak conditions must exist for several years before the parasite can attain the density needed to cause a decline.



***Female cankerworm adult depositing eggs.***

### **A LOOPER, *Phigalia titea* (Cramer)**

Larvae of this moth, one of the measuring worms, have periodically been responsible for scattered mortality of

hardwoods throughout the eastern United States. Mortality is most likely to occur in stands on low-quality sites, particularly during periods of drought which favor this insect's development and further weaken infested trees. This species is likely to be found in almost any hardwood area in the eastern United States. The insect feeds on a wide variety of trees and shrubs. Host trees in the Southeast include oaks, hickories, black tupelo, and black locust.



***Phigalia* adult male moth.**

*Phigalia titea* overwinters as a pupa. Adults emerge in late March to mid-April, and mate. The female lays her eggs in protected sites on branches and trunks of hardwoods. Eggs are most often laid in crevices and beneath the bark of dead branches. Eggs hatch in April, and larvae feed until early June. Larvae often feed on unopened buds, causing irregular holes in the developing leaves. Larvae first eat just the surfaces of leaves, but later consume all leaf tissue between the major veins. When larvae are dislodged by wind or feeding predators they fall or descend on a silken thread and continue feeding in the lower crown or on understory vegetation. Pupation occurs on the soil surface or in the litter.



***Phigalia* larva.**

Weather regulates populations of this insect. Soil-inhabiting insects and rodents are believed to destroy many pupae during the winter.

## **EASTERN TENT CATERPILLAR, *Malacosoma americanum* (F.)**

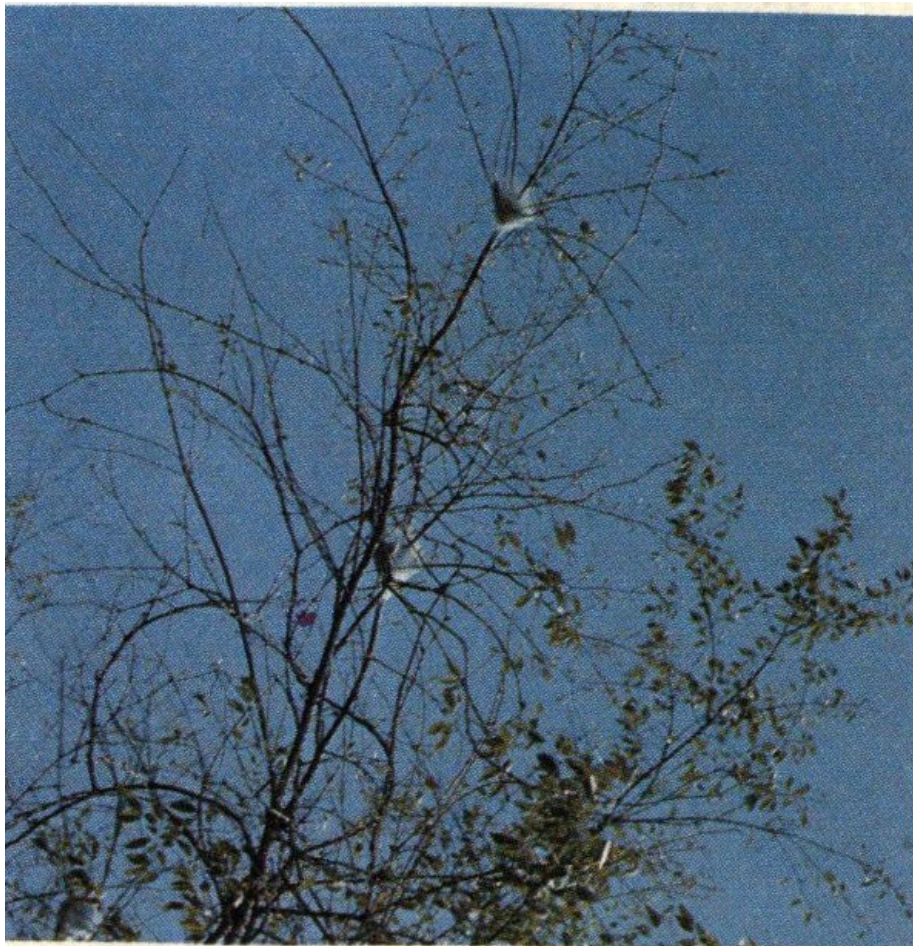
The presence of the eastern tent caterpillar is objectionable more from an aesthetic standpoint than from its effect on the host tree. The ugly tents constructed by the feeding larvae make this pest highly objectionable on shade trees. Black cherry and other species of the genus *Prunus* are preferred hosts, but other trees in the family *Rosaceae* are sometimes attacked. This insect is widely distributed wherever host trees are found east of the Rocky Mountains.



***Larvae and tent of eastern tent caterpillar.***

The caterpillars appear at about the same time the leaves of black cherry begin to unfold. The larvae construct a web or tent in the crotch of a small branch, and begin feeding. Usually they consume entire leaves, except for the large veins. As the larvae mature, they add to the tent, which may reach a foot in diameter and two feet in length. Reaching maturity in about six weeks, the larvae drop to the ground and pupate. The moths emerge in June and the females lay eggs. Eggs of the eastern tent caterpillar are shiny black masses which encircle the smaller twigs and are quite noticeable. The insect overwinters in the egg stage.

Control on ornamental, fruit, and shade trees is achieved by pruning off and burning the tents containing the caterpillars.



***Tent caterpillar-infested black cherry.***

5

### **FOREST TENT CATERPILLAR, *Malacosoma disstria* (Hbn.)**

The forest tent caterpillar has caused repeated serious defoliation of hardwood forests throughout North America. Aspen, water tupelo, hard maple, gums, and oaks are preferred hosts but this insect will feed on a variety of other broadleaf trees.



***Forest tent caterpillar larvae.***

The shiny black egg masses encircling the twigs of host trees can be seen during winter months. Small black, hairy larvae hatch out just as the leaves are beginning to unfold. They do not construct a tent, but make a silken mat on the larger branches or trunk of the tree on which they rest between feeding periods. When full grown, the larvae are about two inches long, brownish-black with distinctive white, keyhole-shaped spots down the middle of the back, and blue lines along the sides. Just before pupating, the larvae spin a whitish silk cocoon on the bark or leaf of the host. In about ten days the light brown moths emerge, mate, and the females begin laying their eggs.

Parasitic flies are one of the more important agents which normally keep this insect under control. Outbreaks



occur with some regularity, however, and chemicals may be required to prevent defoliation.

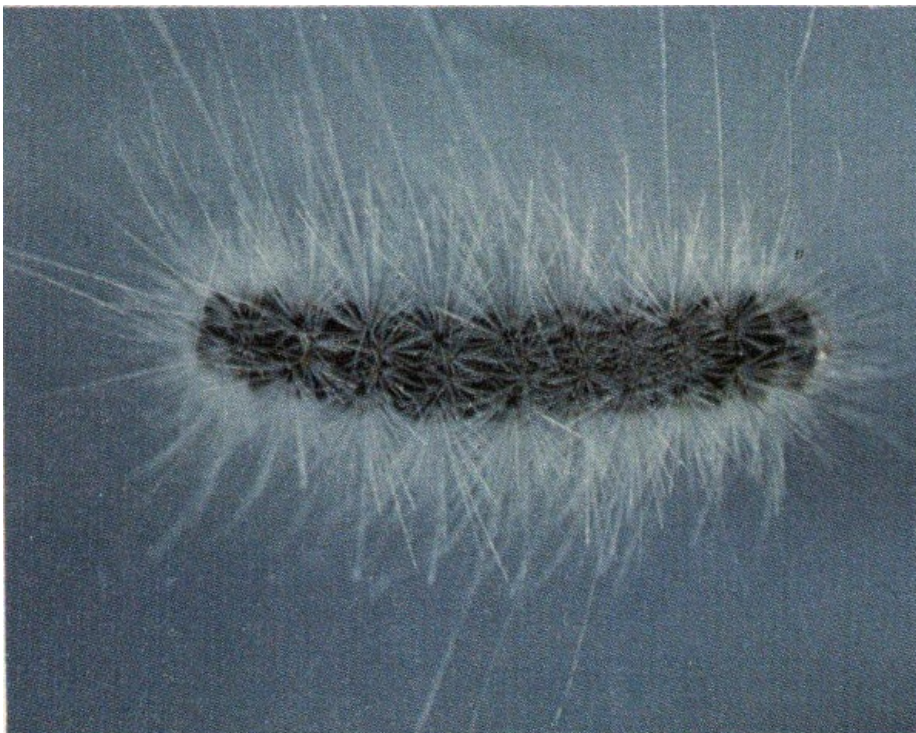


*Colony of third instar larvae.*

6

### **FALL WEBWORM, *Hyphantria cunea* (Drury)**

The fall webworm is not considered an important forest pest. However, ugly webs can seriously detract from aesthetic values. The preferred hosts in the South are persimmon, pecan, and sourwood, but it is also found on black walnut, hickory, cherry, sycamore, crab apple, and sweetgum. The insects range throughout North America.



*Fall webworm larva.*

The adult is a pure white moth about 1¼ inches long. The forewing is sometimes marked with blackish dots. The larva is about one inch long when full grown, generally pale yellow or greenish with a broad dark longitudinal stripe on the back and a yellowish stripe extending from black and orange warts. The insect has one generation per year in the northern part of its range, and two in the southern part. Moths of the first generation emerge from May to July and those of the second in July and August. Adult females lay 400-500 eggs in white cottony patches on the underside of the leaves of host plants. The eggs hatch in about a week, and the larvae form a web and begin to skeletonize the leaves by feeding in rows. As the larvae grow they expand the web to cover the colony. When the larvae are ready to pupate, they crawl or drop to the ground and form a brownish cocoon in the duff around the tree where they overwinter.



***Fall webworm infestation.***

Natural enemies usually keep this insect under control. Webs can be pruned from high-value trees in scenic or recreation areas.

7

### **OAK LEAF TIER, *Croesia albicomana* (Clem.)**

This oak leaf tier has been associated with the decline and mortality of several species of oak in the northeastern United States and southern Appalachians. An outbreak population in the mountains of West Virginia and Virginia in 1966-68 resulted in the loss of several thousand acres of scarlet oak. Usually such outbreaks coincide with periods of drought which increase the impact of defoliation on the host. Its hosts include northern red oak, black oak, scarlet oak, and pin oak. The latter two species seem to be hit hardest by this insect.



***Leaf tier adult and pupa.***

*Croesia albicomana* spends the winter in the egg stage. Eggs are glued to small twigs in the crown of the host tree. Hatch occurs from mid-April to early May. Young larvae, which emerge before bud-break, bore into and mine the expanding buds. When large numbers of this insect are present they can destroy most of the vegetative buds on a tree. Later the older larvae tie down a folded-over portion of a leaf and feed on it. Leaves fed on by the oak

leaf tier appear to be full of shot holes. As the larvae near maturity they may tie the apical portion of two or more leaves together and feed on them. Mature larvae then drop to the ground to pupate in the litter. Adult moths emerge in June or early July, mate, and the female immediately begins laying eggs. The small, flat, oval eggs are deposited individually on small twigs, generally around nodes or leaf scars.



***Scarlet oak killed by leaf tier.***

Little is known of the natural factors which regulate population levels of this insect, but undoubtedly weather is important.

8

### **VARIABLE OAK LEAF CATERPILLAR, *Heterocampa maneto* (Dbldy.)**

The variable oak leaf caterpillar periodically defoliates extensive areas of hardwood forest in the eastern United States. Its range covers all of the southern and eastern states as far west as east Texas. The larvae feed primarily on oaks but will also feed on beech, basswood, birch and elm. Other defoliating insects may be associated with outbreaks causing additional damage. Young larvae skeletonize the leaf while older larvae devour the entire leaf except the primary veins. Infestations are generally more severe in the South, where the insect has two generations per year causing two periods of defoliation in a single year. While infestations usually subside before many trees are killed, heavy defoliation reduces the tree's growth and vigor.



**Larva of the variable oak leaf caterpillar.**

The variable oak leaf caterpillar overwinters as a non-feeding larva in a cocoon on the forest floor. It pupates and emerges as a moth the following spring. The female moth, gray in color and about  $1\frac{3}{4}$  inches long, lays about 500 eggs singly on the leaves of host trees. The larvae feed on foliage for five or six weeks, drop to the ground to pupate, and emerge as adults in mid-summer. Larvae hatching from eggs laid by the second generation of moths defoliate the trees for a second time during late summer. By late October the mature larvae of the second generation have dropped to the forest floor to overwinter. The full grown larva is approximately  $1\frac{1}{2}$  inches long. Color varies among individuals. The head is generally amber brown with curved diagonal white and black bands. The body is usually yellow green with a narrow white stripe down the center of the back bordered by wider dark bands.

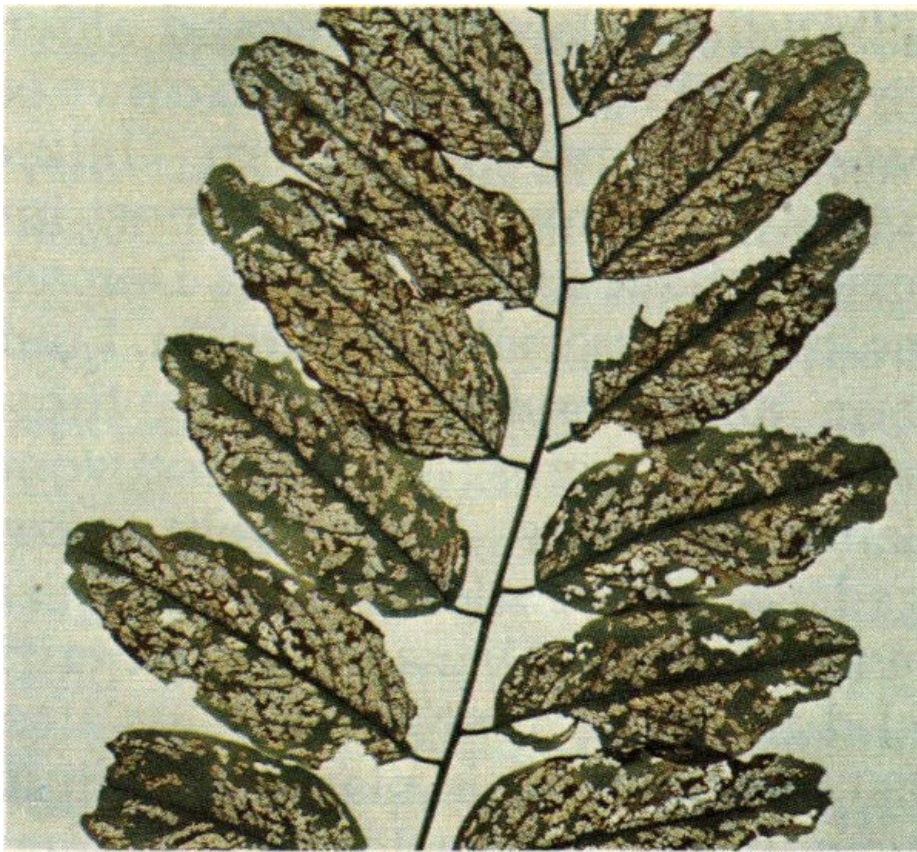
Outbreaks of the variable oak leaf caterpillar may be severe but generally subside before serious tree mortality occurs. Parasites and predators are not effective in controlling rising populations of the insect. Mice and predaceous beetles feed on the resting larvae and pupae in the litter and soil of the forest floor. While no chemical is currently registered for control of this insect, chemical spraying has been effective and safe in controlling closely related insects.

9

### **LOCUST LEAFMINER, *Xenochalepus dorsalis* (Thunberg)**

The locust leafminer is a destructive pest of black locust and honey locust in both the adult and larval stages. It is found throughout the range of these trees in the eastern half of North America. The adults also feed on other species of trees.

The adult beetles overwinter in crevices in the bark of trees and under litter on the forest floor. The beetles emerge and begin feeding in the spring, usually after mid-April. After feeding for a short time they deposit eggs on the undersides of leaves, piling them one upon another, somewhat shingle-like. Eggs are covered with brownish fecal matter. Larvae soon hatch and eat into the leaf tissue to form a mine. Newly emerged larvae feed gregariously in a single mine for a short time. They then construct new mines where the insects live singly. Several mines are constructed before the larvae reach maturity. The larvae pupate in the mines and emerge as adults in July to begin the second generation. The adult beetles are foliage feeders, eating irregular holes in leaves. When sufficient in number they may defoliate host trees.



***Damage to black locust caused by the locust leaf miner.***

Under forested conditions no control is recommended. Rarely do trees die from attacks by this insect. Damage is objectionable mostly from an aesthetic viewpoint.

10

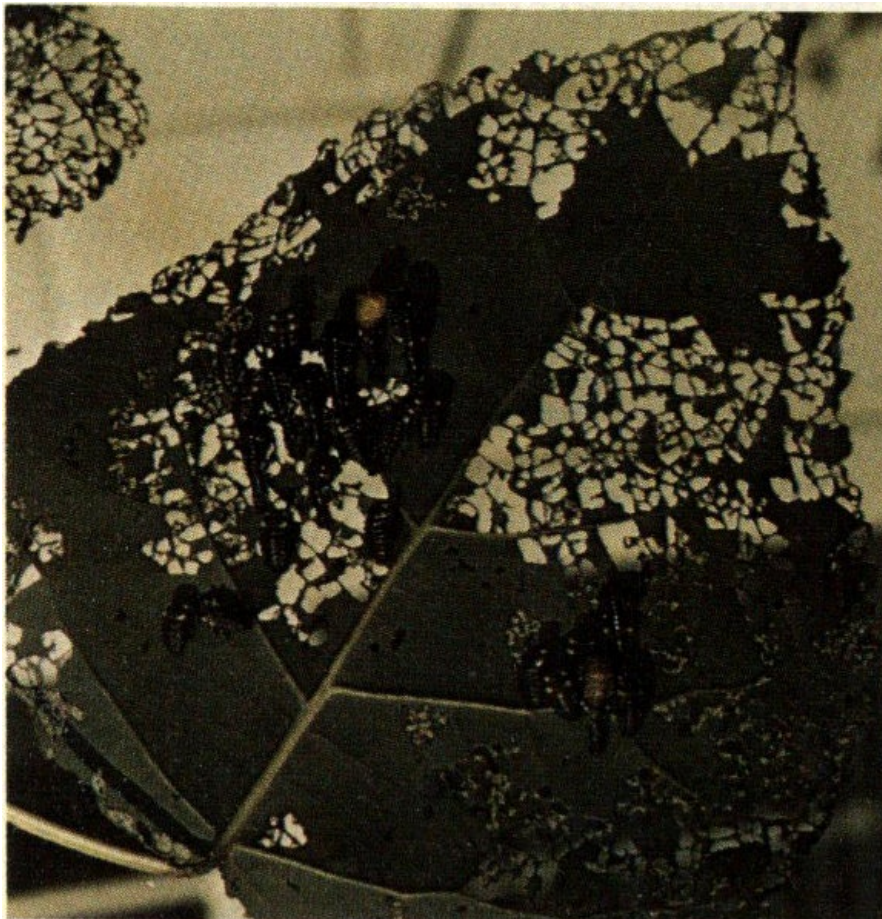
### **COTTONWOOD LEAF BEETLE, *Chrysomela scripta* (F.)**

Willows, poplars, aspens and alders are attacked by the cottonwood leaf beetle in the eastern United States. Cottonwood is the most important host in the South. Damage has been especially severe in Louisiana and Mississippi where thousands of acres of cottonwood plantations are intensively managed. Adult beetles and larvae feed on the foliage. Damage is most critical during the first three years after the cottonwood is planted. Adults chew holes in the leaves and may attack the terminal shoots causing reduced growth or stem deformity. Young larvae skeletonize the foliage but older larvae consume all foliage except the leaf midribs. Damage may become severe enough to cause mortality.



***Cottonwood leaf beetle adult.***

The cottonwood leaf beetle overwinters in the adult stage. Eggs are laid in the spring. The female lays a cluster of about 75 yellowish eggs on the underside of a leaf. As the larvae mature they become yellow with black spots. After about nine days in the larval stage the beetle transforms into the non-feeding pupal stage which lasts five to ten days. The adult is about  $\frac{1}{4}$ -inch long and has a black head and thorax. The wing covers are yellow with longitudinal black stripes. The life cycle is completed in 25 to 30 days and several generations occur in a single year.



***Larvae and pupae of the cottonwood leaf beetle.***

Control may be needed in a plantation only during the first three years. Chemical sprays have been successful in the past but at the present time no insecticides are registered for cottonwood leaf beetle control.

11

### **WALKINGSTICK, *Diapheromera femorata* (Say)**

The walkingstick is a defoliator of broadleaved trees in North America. The black oaks, basswood, and wild cherry are the most common preferred hosts but numerous other hardwood species are attacked. This insect is widely distributed over the United States east of the Rocky Mountains as well as Manitoba and Ontario in Canada. At times, populations build in sufficient numbers to defoliate trees over large areas.



***Male walkingsticks feeding on oak.***

These slender, wingless, stick-like insects are pale green when young, but gradually change to a dark green, gray, or brown at maturity. The adult female measures up to three inches in length and is more stout-bodied than the male. Mating usually takes place in August and egg laying begins six to ten days later. The eggs are dropped to the ground where they overwinter in the leaf litter. In the northern part of the walkingstick's range the eggs take two years to hatch. In the South, walkingstick eggs hatch the summer after they are laid, usually starting in mid-May. The newly hatched walkingstick looks like a miniature adult.

Parasitic wasps and flies are active against the immature walkingsticks but are not efficient enough to cause a substantial population reduction. Flocks of robins, blackbirds, and grackles have a much greater impact, however. The defoliation caused by walkingsticks generally occurs on upland sites in stands which are not of high value or intensively managed. For this reason there has been little interest in control.

12

### **GYPSY MOTH, *Porthetria dispar* (L.)**

The gypsy moth is an introduced forest insect. It was brought into this country from Europe in 1869 and has been restricted to the Northeast. The gypsy moth feeds aggressively on oak, alder, apple, basswood, willow, and birch. As the caterpillars reach maturity they will also feed on hemlock, cedar, pine, and spruce.



***Gypsy moth larvae.***

In the Northeast, the gypsy moth has a single generation per year, overwintering in the egg stage. Eggs hatch in late April and May and larvae are present for approximately two months. Full-grown caterpillars measure more than two inches long and are easily identified by the five pairs of blue spots and six pairs of red spots arranged in a double row along the back. The adult moths are active from late June to early September. Female moths, their bodies heavy with eggs, are unable to fly and must rely on a powerful sex attractant to lure male moths. This sex attractant has been chemically synthesized and is used as a trap bait in surveys designed to determine the presence of gypsy moths in areas suspected to be infested. Each female deposits from 200 to 800 eggs in a buff-colored mass which she attaches to any convenient surface including cars, trailers, and other vehicles.



***Female gypsy moths depositing egg masses.***



During the past 75 years the gypsy moth has been the target of many large-scale control programs, and much money has been spent trying to reduce the impact of gypsy moth infestations. Current control efforts are handicapped by the unavailability of a safe and effective persistent chemical. In the North two predators and nine parasites have been successfully established to help control the gypsy moth. The greatest problem in controlling gypsy moth spread, however, lies in the fact that recreational vehicles transport egg masses and larvae from infested sites into uninfested areas.

### **HICKORY BARK BEETLE, *Scolytus quadrispinosus* (Say)**

The hickory bark beetle is reported to be the most serious insect pest of hickory in the United States. Population explosions where thousands of trees were killed have been reported from New York, Pennsylvania, Maryland, Virginia, and recently from Georgia. Hickory bark beetles are distributed throughout the range of their host in eastern United States. All species of hickory are subject to attack, as well as pecan and possibly butternut. Adult beetles emerge in May and June in the southern portion of their range. They feed for a short time by boring into the petioles of leaves and into small twigs of the host. Dying leaves and twigs are the first evidence of attack. After feeding, the beetles fly to the trunk and larger branches of the host and bore into the inner bark to lay their eggs. Short, longitudinal egg galleries are etched into the sapwood and from 20 to 60 eggs deposited in small niches cut on either side of the gallery. As the larvae develop, their galleries radiate out from the egg gallery. Two generations per year have been reported from northern Mississippi. The beetle overwinters in the larval stage. With the coming of warm weather in the early spring, it changes into the pupal stage, and finally, in May, to an adult.



***Hickory bark beetle adult.***

Outbreaks of this insect begin in periods of hot, dry weather and subside when rains commence.



***Larval galleries of the hickory bark beetle.***

**SMALLER EUROPEAN ELM BARK BEETLE, *Scolytus multistriatus* (Marsham)**

The smaller European elm bark beetle was first reported in the United States in 1909. Its presence in this country was given significance with the introduction of the Dutch elm disease in 1930. The beetle attacks all native and introduced species of elms and now occurs wherever the hosts are present. The feeding of the adult beetles in the spring is responsible for transmitting the Dutch elm disease from diseased to healthy trees. The Dutch elm disease is now our most important shade tree disease.



***Smaller European elm bark beetle adult.***

Adult bark beetles emerge in the spring from dead or dying elms and begin feeding on the twigs of healthy elms. The female then excavates an egg gallery in the bark of dead or weakened elms. Eggs are deposited along the walls of the gallery. The larvae, upon hatching, burrow into the bark at right angles to the egg gallery. Pupation occurs at the end of the larval tunnel. New adults tunnel to the bark surface and leave the tree through circular emergence holes. There are usually two generations a year. The beetles overwinter in the larval stage.

Chemical control and good tree maintenance are the two methods used to reduce bark beetle populations. Insecticides are used to prevent feeding by the adults in the spring. Tree sanitation involves removal and disposal of dead elms and elm limbs which eliminate breeding and larval development sites.

### **COLUMBIAN TIMBER BEETLE, *Corthylus columbianus* (Hopkins)**

All hardwood trees in the eastern half of the United States are subject to attack by the Columbian timber beetle, but oaks, maples, birch, basswood, yellow-poplar, and elm are the preferred hosts in the South. The beetle causes two major types of damage: 1) physical damage caused by the 1/32" to 1/16" hole excavated by the adult into the sapwood, and 2) degrade caused by stain which may extend for a considerable distance above and below the gallery. Large diameter trees are preferred as hosts, but trees as small as one and one-fourth inches in diameter may be attacked.



***Callow adult and pupae of the Columbian timber beetle.***

There are two and sometimes three generations of this insect each year. Adults from the first generation emerge from late May through June and those from the second in October. The first evidence of attack is the white dust which collects at the entrance hole. Later, depending on the tree's physiological condition, a sap-soaked area may develop around the entrance hole. The adult bores a horizontal hole into the sapwood of a healthy tree for a few inches and later constructs two or three shorter lateral branches. "Cradles" (or egg chambers) are then constructed for a short distance perpendicular to these galleries. The female deposits a single egg in each chamber. The offspring spend their entire developmental period within the cradles feeding on fungi which grow on the sapwood. It is this fungus which causes the extensive staining characteristic of Columbian timber beetle attack. Winter is spent in both the pupal and adult stages in the brood galleries.



***Columbian timber beetle entrance holes in yellow-poplar.***

Chemical control is not practical for forest trees.

16

### **COTTONWOOD TWIG BORER, *Gypsonoma haimbachiana* (Kearfott)**

The cottonwood twig borer is widely distributed throughout the entire range of eastern cottonwood, from Canada to the Gulf States and west to Missouri. The larvae of the cottonwood twig borer feed in the terminals of the host. This feeding results in reduction of terminal growth and forked and crooked trunks. Damage is especially severe on young trees.



***Cottonwood twig borer damage to cottonwood sapling.***



***Three-year-old cottonwood stunted by twig borers.***

The female moth lays eggs on the upper surface of leaves along the mid-rib, singly or in groups of two to eight. Hatching occurs in about five days and the young larvae cover themselves with silk mixed with trash, and then tunnel into the mid-rib. After the first molt, larvae leave the tunnels and bore into tender shoots. Larvae reach maturity in about 21-23 days and begin moving down the trunk of the tree where they spin cocoons in sheltered bark crevices, in litter, or between leaf folds. The adult moths emerge in eight or nine days. It takes from 40-45 days to complete the life cycle in mid-summer.

The most effective natural control is a potter wasp, *Eumenes* sp. which tears open tender cottonwood shoots and removes twig borer larvae from their galleries. Other wasps parasitizing the twig borer include *Bracon mellitor* (Say), *Apanteles clavatus* (Provancher) and *Agathis* sp.

17

### **COTTONWOOD BORER, *Plectrodera scalator* (F.)**

The cottonwood borer is limited in range to the southern half of the United States. Hosts include cottonwood, poplars and willows. The adults feed on the tender shoots of young trees causing them to shrivel and break off. The larval stage of this insect tunnels in the inner bark and wood at the base of the tree and may kill or severely weaken it.



**Adult cottonwood borer.**

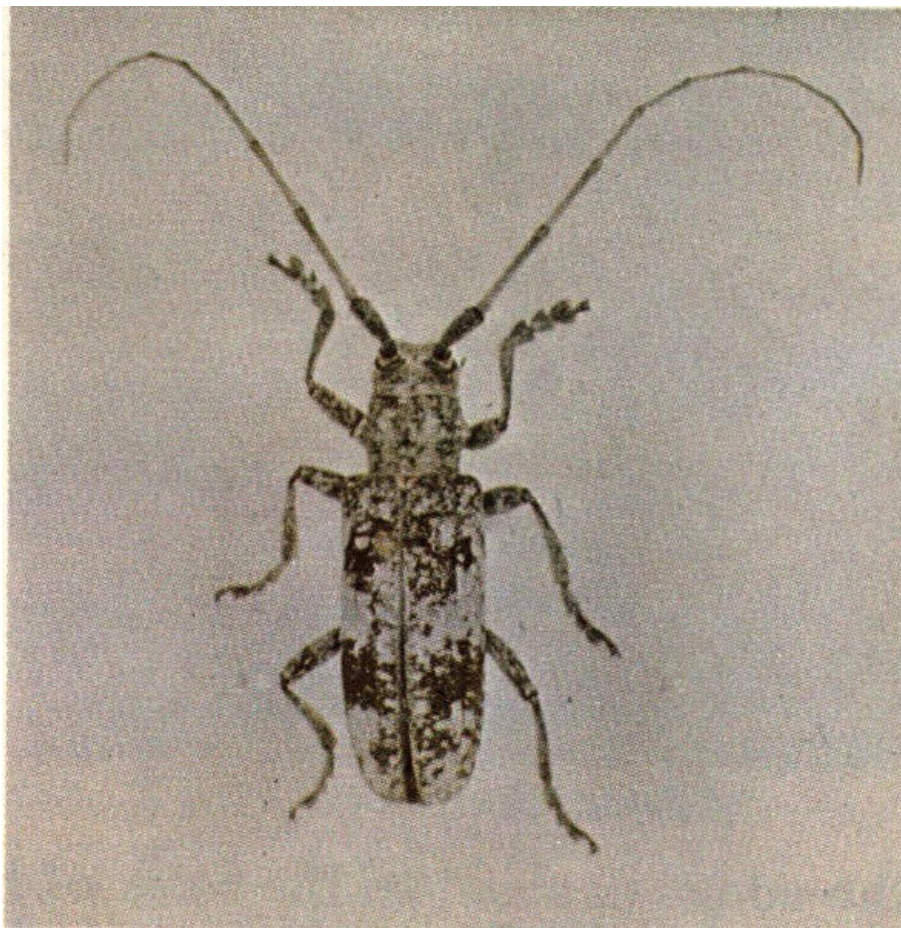
The adult beetles appear in midsummer. After feeding briefly on the tender bark of the terminals the adults descend to the bases of host trees where the female deposits her eggs in small pits gnawed in the bark. Eggs hatch in about three weeks. The larvae bore downward in the inner bark, entering a large root by fall. Larval feeding continues into the second year as the larvae bore into the inner bark and wood. The larvae transform into the non-feeding pupal stage and finally into an adult in the summer of the second year thus completing a two year life cycle. Adult beetles are 1¼ to 1½ inches long. They are black with lines of cream-colored scales forming irregular black patches.

The best control for the cottonwood borer is to maintain a vigorous, healthy stand. Slow growing, off-site plantings of host trees are the most severely damaged. While some systemic insecticides have shown promise, there is currently no registered chemical control method.

18

### **WHITE OAK BORER, *Goes tigrinus* (De Geer)**

A recent survey of damage caused by various wood borers to three species in the white oak group revealed an estimated annual loss in the South exceeding 20 million dollars. One of the more important borers responsible for this damage is the white oak borer.



***Adult white oak borer.***

Usually the white oak borer attacks oaks one to eight inches in diameter. The damage, like that of other hardwood borers, is the result of larval feeding in the wood. Galleries up to one-half inch in diameter extend upward through the sapwood into the heartwood. The white oak borer takes three to four years to complete one generation. The mated adult female beetle lays her eggs singly in the inner bark through a small oval niche chewed through the outer bark. After about three weeks the eggs hatch and the larvae immediately bore into the sapwood. Later they bore upward into the heartwood. The boring frass ejected out of the entrance is evidence of an active infestation. Pupation occurs behind a plug of excelsior-like frass at the upper end of the gallery in the heartwood. In about three weeks, adults emerge by boring separate and perfectly round holes through the wood and bark. In the South, adults generally emerge in May and June and feed for a short time on oak leaves and the tender bark of twigs before the females lay their eggs.

Woodpeckers may destroy up to 25 percent of the larvae during the winter months, but this and the small toll taken by insect predators and parasites are not sufficient to keep the white oak borer population low enough to avoid serious economic loss.



***Entrance and emergence holes in white oak.***

**RED OAK BORER, *Enaphalodes rufulus* (Hald.)**

The red oak borer is a serious pest of trees in the red oak group. It ranges throughout eastern North America wherever host species grow. It is estimated that defects caused by larval tunnels in the sapwood and heartwood of host trees costs the hardwood timber industry millions of dollars each year.





### ***Adult red oak borer.***

Eggs of the red oak borer are laid during early and mid-summer in bark crevices or under patches of lichen on host trees. After hatching, larvae bore into the inner bark region where they feed until mid-summer of the next year. This feeding in the inner bark causes characteristic catfaces or bark pockets. Once larvae enter the wood they bore upward through the sapwood and into the heartwood and pupate behind a plug of excelsior-like frass. The larval galleries are from one-fourth to one-half inch in diameter, and six to ten inches long. Usually the galleries are within six inches of the center of the tree. The adult emerges at the lower end of the tunnel, using a hole cut through the bark by the larva just prior to pupating. Adults emerge in June and July. The timing of the two-year life cycle of the red oak borer is such that the adult population is greatest in odd-numbered years.

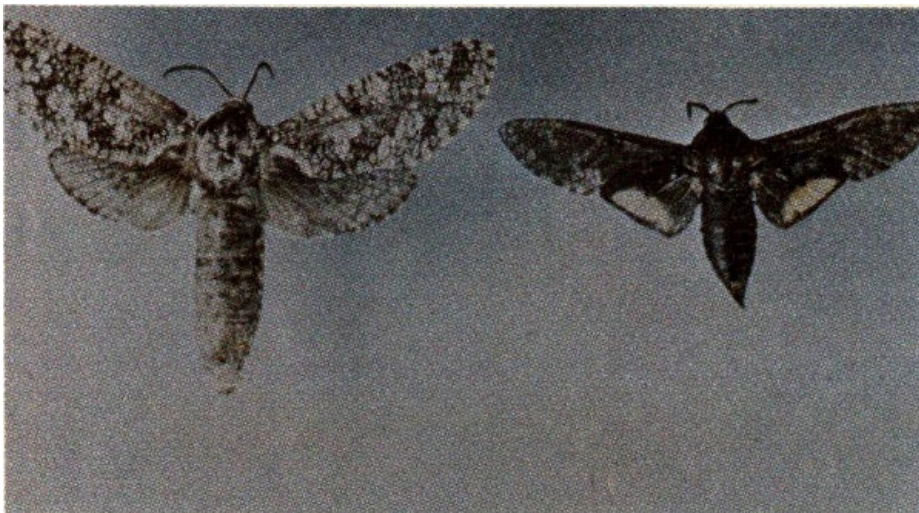
Generally, borers such as the red oak borer infest trees of poor vigor. It is possible, therefore, to reduce borer populations by maintaining vigorous stands and by removing cull trees.



***Red oak borer attack on Nuttall oak.***

### **CARPENTERWORM, *Prionoxystus robiniae* (Peck)**

The carpenterworm bores in the wood of living hardwood trees, causing costly damage to commercial timber species. In the South, oak species are preferred hosts but black locust, maples, willows, and fruit trees are also attacked. The carpenterworm is distributed throughout the United States.



***Carpenterworm adults.***

Adult moths emerge in late April to early June, mate, and the females lay groups of eggs in bark crevices or wounds. Each female lays 200 to 500 eggs during her one-week life span. After hatching, the larvae wander over the bark for a short time before boring into the inner bark where they feed until half-grown. The larvae then bore into the sapwood and heartwood, returning occasionally to feed in the inner bark. The larval period lasts from two to four years. Pupation usually occurs deep within the heartwood. Just prior to emergence, the pupa wiggles to

the entrance hole where it remains slightly protruding until the adult moth emerges. The large winding tunnels constructed by the larvae in the sapwood and heartwood of living hardwoods serve as an entrance for wood-rotting fungi and insects such as the carpenter ant. In extreme cases, the tree may be structurally weakened and subject to wind breakage.



***Carpenterworm galleries in nuttall oak.***

Some chemicals which have a fumigating action have proved effective in controlling this insect in shade trees, but no practical control has yet been found for forest trees.

21

### **PINE WEBWORM, *Tetralopa robustela* (Zell.)**

Ugly, compact masses of brown excrement or frass pellets around the stem of pine seedlings mark infestations of the pine webworm. Rarely is the defoliation severe enough to kill the seedlings, but it undoubtedly has an impact on growth. Found throughout the eastern United States, the webworm commonly attacks red, white, jack, loblolly, shortleaf, and slash pines.



*Pine webworm damage to loblolly pine.*



The adult moth has a wingspread of about one inch. The forewing usually is gray in the middle portion and darker at the base and tip. The hind wings and body are smokey gray. The full-grown larva is a caterpillar approximately  $\frac{4}{5}$  of an inch long. The head is tan with darker markings and the body light brown with dark longitudinal stripes running down each side.

Eggs are usually laid on seedlings, occasionally on larger trees, between May and September. After eggs hatch, the caterpillars live in silken webs surrounded by masses of frass, and feed on the needles. Generally each web

contains one or two larvae but occasionally 25 or more may be found. After feeding is completed, the caterpillars drop to the ground and pupate below the soil surface. In the South, there are usually two generations each year.

In plantations, hand picking is an effective method of control. When high value nursery stock becomes infested, chemical control may become necessary.

22

### **BAGWORM, *Thyridopteryx ephemeraeformis* (Haw.)**

The bagworm is distributed throughout the eastern half of the United States. It is generally recognized as a defoliator of conifers, particularly juniper, cedars, and arborvitae, but it is also found on many hardwood trees including maple, wild cherry, poplars, oaks, and apple.



***Bagworm cases on pine.***

The wingless, maggot-like adult female bagworms are present in September and October and spend their entire lives within the protective cover of the tough, silken bag which they construct as larvae. Males are quite agile fliers and can often be seen in the fall flying around infested shrubs in search of a mate. Mating takes place through the open end of the bag. Shortly thereafter the female deposits her egg mass containing 500 to 1,000 eggs in her pupal case. The eggs remain in the bag throughout the winter. In the deep South, hatching can occur as early as April, but occurs in May or June further north. During the early stage of development, the larvae, housed in their tiny bags, are quite inconspicuous. As they mature, the bags become quite noticeable, and the amount of foliage consumed increases rapidly.

Outbreak populations of bagworm are in most cases quickly reduced by low winter temperatures and a complex of several parasites. On shrubs and shade trees around a home, it is often practical to control bagworms by picking and destroying the bags.

23

### **PINE COLASPIS, *Colaspis pini* (Barber)**

Colaspis beetles are found throughout the Southeast, but are more common in the Gulf states. They seem to prefer slash pine but have been found on many of the southern pines. The pine colaspis beetle is not a serious forest pest but feeding damage caused by large populations occasionally produces a spectacular browning effect of the needles similar to that caused by fire.



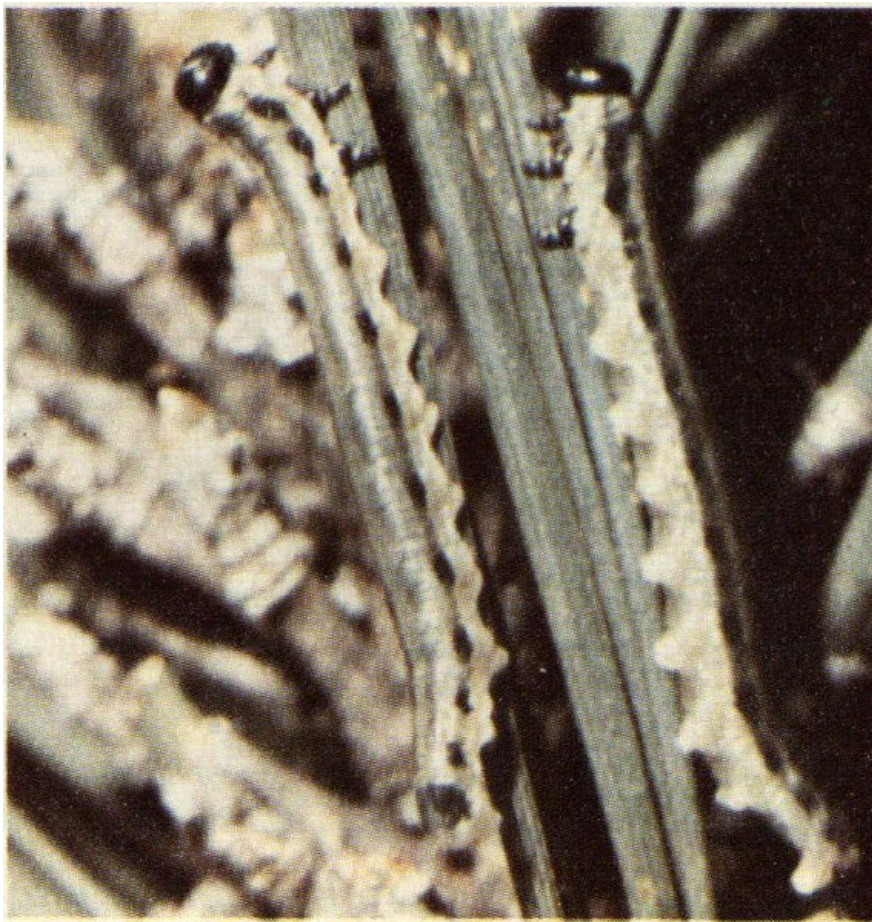
***Adult pine colaspis beetle feeding damage on pine.***

The adult beetles chew the edges of needles to produce an irregular, saw-like edge which turns brown. Occasionally only the tips of the needles show signs of the infestation. Later, however, the entire needle may die, causing the whole tree to become brown as though scorched by fire. Trees that have been attacked do not die, and little or no growth loss results. Attacks usually occur in early summer; by late summer the trees appear green and healthy again. This pest is sporadic in its occurrence and may not develop again in the same area for several years. The adult female lays her eggs in the soil during the summer. Larvae hatch and feed on roots of grasses and other vegetation, and overwinter in this stage. The larvae pupate in the spring; adults emerge in early summer to feed. There is only one generation a year.

Under forest conditions, no control measures are recommended for the pine colaspis beetle. On ornamentals and shade trees, insecticides can be used to prevent unsightly damage.

### **PINE SAWFLY, *Neodiprion excitans* (Roh.)**

This pine sawfly is found throughout the southeast from Virginia to Texas. Loblolly and shortleaf pine are preferred hosts, but pond, slash, longleaf, and Sonderegger pine are also attacked. The larvae do not do well on the latter two species. As with most sawflies, the larvae feed in groups on the host needles. Generally the old needles are preferred, but all of the needles are eaten when large numbers of larvae are present. Three or four young larvae usually encircle a needle and, starting from the tip, consume all but a central core. When nearing maturity they eat the entire needle.



***Pine sawfly larvae.***

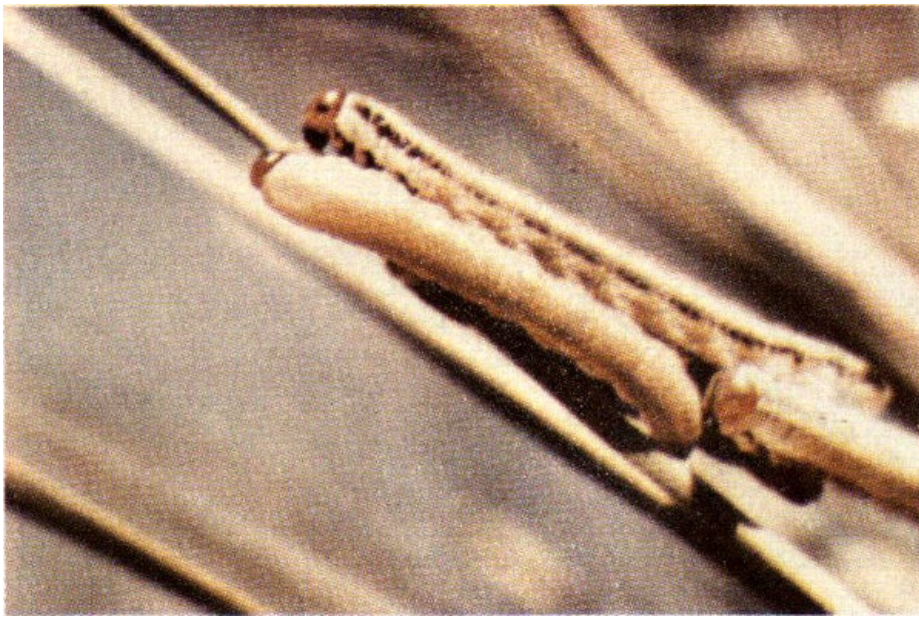
Four or five generations of this sawfly may occur each year. Adult females begin to lay their eggs in slits cut in the needles during late March. The eggs hatch in 10-21 days, and the larvae feed for about five weeks. When mature the larvae usually crawl to the ground and spin a cocoon in the loose litter at the base of the tree. Although all stages of the life history can be found at any time during the growing season, the peak adult emergence occurs in late summer. Larvae from this late summer generation are responsible for most of the damage which, although never directly responsible for mortality, may predispose the trees to attack by other insects (particularly bark beetles) and diseases.

Natural control factors generally bring outbreak populations under control after one season. Hogs, armadillos, mice, and shrews are reported as being of significant value in regulating the sawfly population. Insect parasites, predators, and disease are also effective control agents.

25

### **ARKANSAS PINE SAWFLY, *Neodiprion taedae linearis* (Ross)**

Loblolly and shortleaf pines are the only trees attacked by the Arkansas pine sawfly. Periodic outbreaks of this insect over large areas in the south-central states cause substantial growth losses, but the insects seldom kill trees.



***Arkansas pine sawfly larvae.***

This insect has a single generation each year. In the spring, eggs which have overwintered hatch into tiny caterpillar-like larvae. The larvae feed in groups for 30-40 days (primarily on the older foliage) before crawling to the ground and pupating in the topsoil or litter. Adults emerge during warm days in October and November, mate, and the females begin laying eggs. Sawflies get their name from the manner in which the eggs are laid. The female is equipped with a saw-like "ovipositor" with which she cuts a slit in the needle into which the egg is inserted. From two to ten eggs are laid in a single needle. Each female deposits from 90 to 120 eggs.

An important natural control agent of this sawfly is a polyhedral virus disease that sometimes destroys large numbers of the larvae. Rodents destroy many cocoons. Several species of larval parasites are also known to exist. Of these, a parasitic fly, *Anthrax sinuosa* (Wied.) and an ichneumon wasp, *Exenterus canadensis* (Prov.) appear to be the most important.

26

### **VIRGINIA PINE SAWFLY, *Neodriprion pratti pratti* (Dyar)**

The Virginia pine sawfly is found from Maryland to North Carolina, and west to Illinois. The insect prefers Virginia and shortleaf pine, but it will also oviposit and feed on pitch and loblolly pine.



***Virginia pine sawfly larva.***

On warm sunny days in late October and early November, the adult sawflies emerge from their cocoons in the litter, mate, and the females lay eggs. The female is equipped with a saw-like ovipositor with which she cuts a slit at the edge of a needle and inserts a small, white, oval egg. Several eggs are usually laid at evenly spaced intervals in each needle, but in only one needle per fascicle. From 30 to 100 eggs are deposited in this manner by each female. The eggs hatch the following April and the young larvae feed gregariously on the old needles. Larval development is usually completed by the time the new needles come out, giving heavily defoliated trees a tufted appearance. Mature larvae crawl to the ground and spin cocoons in the litter or surface soil. They remain as prepupae until late September when pupation occurs.



***Pine defoliated by the Virginia pine sawfly.***

Heavy defoliation for two or more years can weaken trees and make them more susceptible to other insects and diseases, particularly when associated with drought. In commercial stands the growth loss caused by several years of 50% defoliation by this insect can amount to  $\frac{1}{3}$  of the expected growth.

Several parasites, predators, and a virus attack the Virginia pine sawfly, but weather conditions seem to be primarily responsible for the drastic fluctuations in sawfly populations. Several chemicals have proven effective in preventing damage to ornamentals.

27

### **REDHEADED PINE SAWFLY, *Neodiprion lecontei* (Fitch)**

The redheaded pine sawfly did not become an important pest until extensive planting of pine in pure plantations began in the 1920's. Since then, outbreaks in young natural pine stands and plantations have been common in the South, the north-central states, and eastern states. Feeding is primarily restricted to the two- and three-needled pines under fifteen feet in height. Shortleaf, loblolly, longleaf, and slash are the species most commonly attacked in the southern states.





***Redheaded pine sawfly larva.***

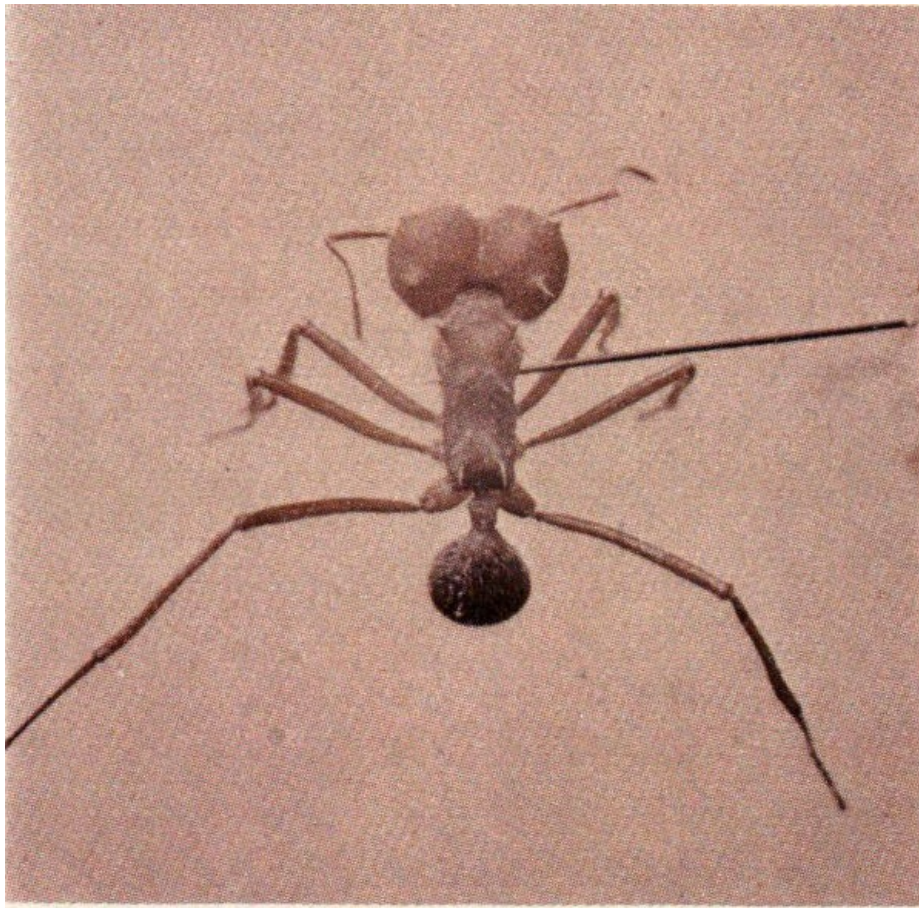
In the fall, sawfly larvae drop to the ground, spin cocoons in the duff or topsoil, and overwinter as prepupae in a small, brown cocoon. With the coming of spring, pupation occurs and adult emergence follows in about two weeks. Some prepupae may remain in a resting stage for more than one season before emerging. Each female lays about 120 eggs. She cuts a small slit in the edge of a needle and deposits a single egg inside each slit. Eggs laid by a single female are generally clustered on the needles of a single twig. Eggs hatch in three to five weeks, depending on temperature and locality. Larvae feed gregariously on the host for 25 to 30 days. When fully grown, larvae drop to the ground and spin their cocoons. In the South there are at least two generations per year with a maximum of five being recorded. Colonies of different ages may co-exist in the late fall or early winter.

Outbreaks occur periodically and tend to subside after a few years of heavy defoliation. Numerous parasitic and predatory insects play an important role in causing the decline of infestations, as do adverse weather conditions during the larval stage. When deemed necessary, chemical treatment is an effective control.

28

### **TEXAS LEAF-CUTTING ANT, *Atta texana* (Buckley)**

Damage caused by the Texas leaf-cutting ant, or town ant, is confined in the United States to southeast Texas and west-central Louisiana. The ant causes damage to a variety of green plants throughout the year and causes serious damage to pine seedlings during the winter when other green plants are scarce. During this period, stands of young seedlings may be completely defoliated and the stems girdled. The ant carries bits of needles, buds, and bark back to its nest to serve as the medium on which it cultivates a fungus. The fungus is the ant's only known food.



***Texas leaf cutting ant.***

Ant colonies are characterized by numerous crescent-shaped mounds five to fourteen inches high, and by a series of well defined foraging trails cleared of vegetation. The mounds may be confined to a relatively small area or extend over an acre or more. Each mound serves as the entrance to a football-sized, hemispherical-shaped nest which the ants construct at depths up to 20 feet below the surface. The nests are interconnected by a series of narrow tunnels, and connected to lateral foraging tunnels which may surface a hundred yards or more from the colony. Leaf-cutting ants, like many other social insects, are segregated into castes. The queen dominates the colony and is responsible for its reproduction. Large worker ants, or soldiers, provide protection from intrusion by other insects, while the smaller workers collect the leaves and tend the fungus gardens.

Various chemicals such as fumigants, contact poisons, and baits have been used to control the leaf-cutting ants with varying success. No natural control has yet been found.

29

### **SOUTHERN PINE BEETLE, *Dendroctonus frontalis* (Zimm.)**

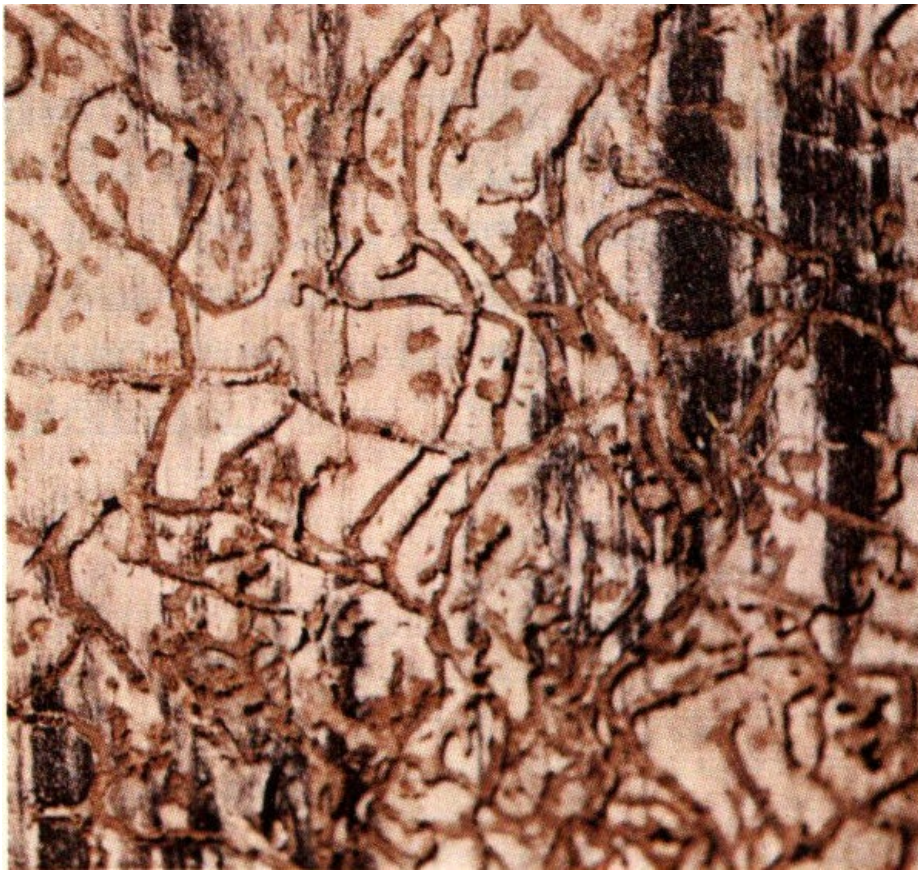
Probably no other insect is of more concern to managers of southern pine forests than the southern pine beetle. Loblolly and shortleaf pine seem to be preferred hosts, but all of the southern pines may be attacked wherever they occur in North and Central America.

Adult beetles are about the size of a grain of rice, stout and reddish-brown in color. While they commonly attack lightning-struck or weakened trees, they can also quickly build up to high populations capable of successfully attacking healthy trees during periods favorable to their development. Adult beetles bore directly through the bark, mate, and the females begin to excavate S-shaped egg galleries in the inner bark. Eggs are deposited in niches on either side of these galleries and hatch into small legless grubs within four to nine days. The grubs mine for a short distance before boring into the outer bark where they pupate. There are from three to seven generations per year depending on locality and weather. Drought seems to be associated with major outbreaks of this insect.



***Adults of the black turpentine beetle, the southern pine beetle and three species of Ips engraver beetles.***

Control includes rapid salvage and utilization of infested trees and piling and burning of infested material. Outbreaks usually subside with the advent of unfavorable weather and improved host vigor.



*Southern pine beetle larval galleries.*



*Southern pine beetle pitch tubes.*

### **IPS ENGRAVER BEETLES, *Ips* spp.**

With the possible exception of the southern pine beetle, no other insects cause as much mortality to southern pine forests as do the three species of *Ips* engravers. Usually they attack severely weakened trees, lightning-struck trees, or fresh slash left by logging operations. During drought periods they can successfully attack otherwise healthy pines.



***Pine showing typical symptoms of Ips attack.***

Attacked trees are quickly girdled by the adults as they construct their egg galleries in the inner bark. Death is usually hastened by the introduction of blue-stain fungi which blocks the flow of sap. Small reddish pitch tubes are frequently the first sign of attack, but they are usually absent in trees suffering from drought. Peeling back the bark of an infested tree will reveal typical Y- or H-shaped egg galleries with short larval galleries extending perpendicular to them on either side. *Ips* beetles are easily recognized by their "scooped out" posteriors which are surrounded by varying numbers of tooth-like projections. It takes only 18-25 days to complete one generation, allowing populations of these beetles to increase very rapidly during favorable conditions.

At present the best control is the speedy removal and utilization of actively infested trees, making sure that the bark and slabs are destroyed.

### **BLACK TURPENTINE BEETLE, *Dendroctonus terebrans* (Oliv.)**

The black turpentine beetle is found from New Hampshire south to Florida, and from West Virginia to east Texas. It is a particularly serious pest in the Gulf States where recent outbreaks have killed large acreages of timber. Attacks have been observed on all pines native to the Southeast, and also on red spruce.



***Life stages of the black turpentine beetle: adult, callow adult, pupa, larva and eggs.***

This is the largest of the southern bark beetles, varying in length from  $\frac{1}{5}$  to  $\frac{1}{3}$  of an inch, or about the size of a raisin. They are reddish-brown to black in color. The beetle attacks fresh stumps and living trees by boring through the bark and constructing galleries on the face of the sapwood where eggs are laid. Fifty to 200 eggs are laid in a group. They hatch into white larvae which feed on the inner bark. The beetle may girdle trees when several broods occur at approximately the same height, killing the trees. From 70 to 90 percent of the trees attacked by the beetle die.

After the larvae complete their development, they pupate. Adult beetles emerge and infest more pine trees. The entire life cycle takes from  $2\frac{1}{2}$  to 4 months, depending on temperature. In the insect's southern range there usually are two generations and part of a third each year. In its northern range, the third generation does not develop; consequently the beetle is not a serious pest there.

Weather is probably the most influential factor in regulating the numbers of this insect. During outbreaks the removal or chemical treatment of infested trees helps to keep losses to a minimum.

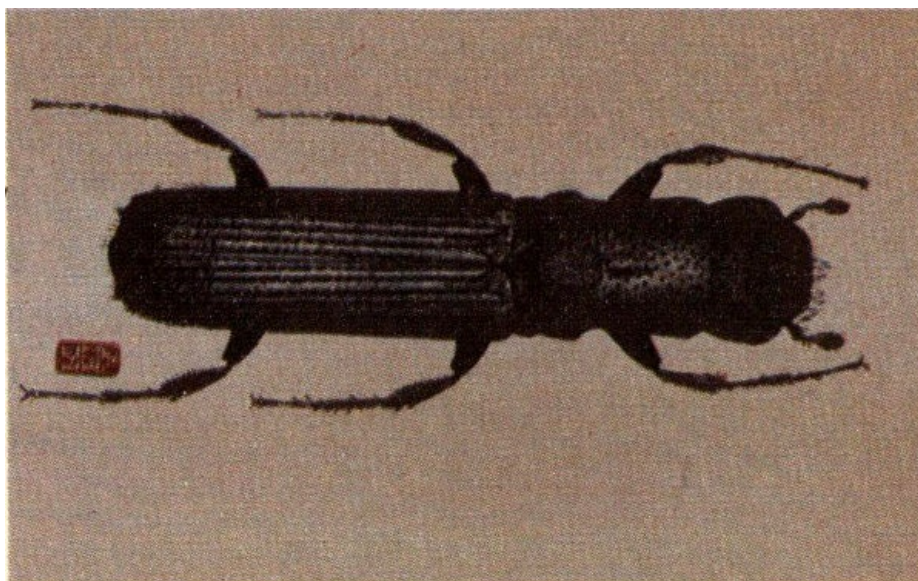


***Close-up of black turpentine beetle pitch tubes.***

32

### **AMBROSIA BEETLE, *Platypus flavicornis* (F.)**

Ambrosia beetles are represented in the South by several species of the genus *Platypus* of which only *P. flavicornis* (F.) is known to attack dead or dying southern pines. *P. flavicornis* (F.) will secondarily invade other conifers and on some occasions may be found in hardwood trees. It is so abundant in the South that few dying pines, stumps, or logs escape attack. The beetle is found from Texas east to Florida and north to New Jersey.



***Adult of the Platypus ambrosia beetle.***

The adult is a reddish-brown elongate beetle approximately one-fourth inch in length. The male of the species has a pair of blunt tooth-like structures on the third abdominal segment. Several males are usually found in the presence of a single female. This species requires moist wood which is favorable to the growth of fungi upon which they feed. The adults bore into sapwood or heartwood of logs and lumber, making pin-sized holes which are stained by the ambrosia fungus. The female lays eggs in small clusters in the tunnel and the developing larvae excavate tiny cells extending from the tunnel parallel to the grain of wood. There may be several generations a year.

Ambrosia beetle damage to green sawlogs and lumber may result in considerable degrade and strength reduction. The best control is rapid utilization of dead or dying trees. Lumber should be seasoned as soon as possible to reduce or eliminate losses.

33

### **SOUTHERN PINE SAWYERS, *Monochamus* spp.**

In the South, dying pines and fresh logs are quickly attacked by the pine sawyers. In sufficient numbers they may cause a significant loss of wood fiber and degrade sawlogs. These species are commonly found in the South infesting southern pine, fir, and spruce wherever the hosts grow.



***Adult southern pine sawyer beetle.***

The adults emerge in the spring or summer and begin to feed on the bark of twigs. After mating, the female gnaws pits through the bark of freshly felled or dying pine. The female beetle lays one to several eggs in each pit. After eggs hatch the larvae bore beneath the bark for 40-60 days, converting the inner bark into coarse, shredded frass. The larvae then enter the wood and make deep U-shaped cells through the heartwood and sapwood. The entrance is plugged with frass and the far end is excavated into a pupal chamber. The larvae pupate the following spring or early summer, transform into adults, and emerge that same season. The insect has two or three generations per year in the South.

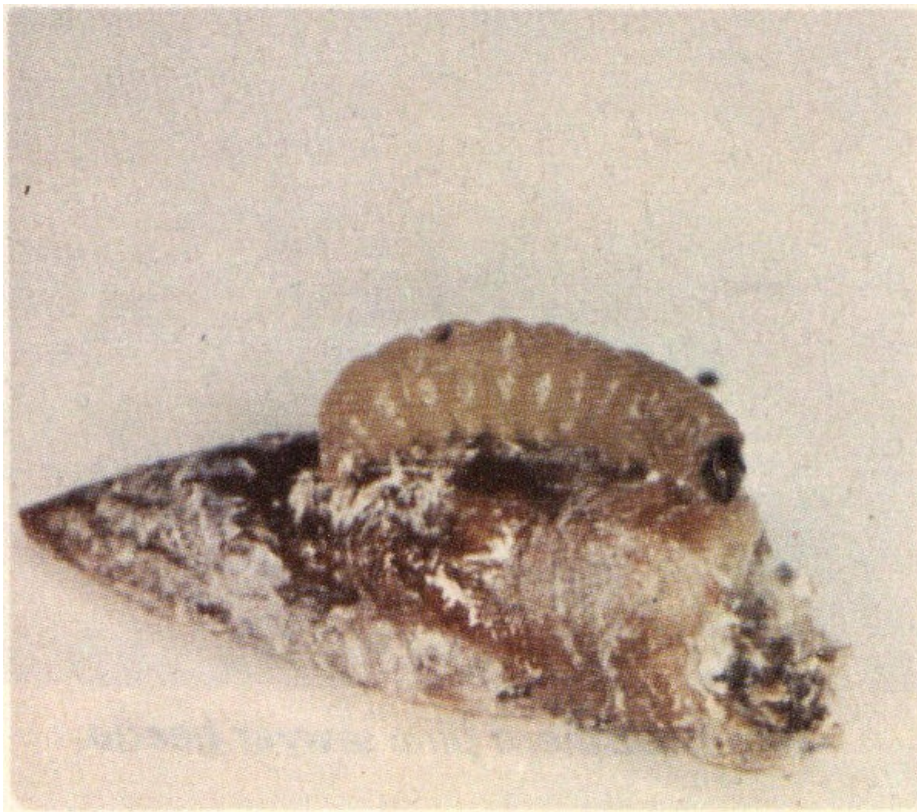
Pine sawyers render storm- or fire-damaged pines unfit for salvage and are also a problem in wood-holding yards. Rapid salvage and utilization of dead or dying trees or green logs will reduce losses significantly.

34

### **NANTUCKET PINE TIP MOTH, *Rhyacionia frustrana* (Comstock)**

The impact of the Nantucket pine tip moth on pine plantations varies widely with tree species, host vigor, and environmental factors. Heavily infested trees may be severely stunted or deformed but mortality is rare. Generally, the tree grows out of the susceptible stage within a few years. In seed orchards, the tip moth is receiving increasing attention because of its impact on height growth and, more importantly, because of its effect on flower and cone production. All species of pine within the range of the tip moth except white pine and longleaf pine, are attacked. It has been reported from all states in the eastern hard-pine region extending across east Texas, Oklahoma, Illinois, Indiana, Ohio, and southern New York State.





***Nantucket pine tip moth larva on pine bud.***

The tip moths overwinter as pupae in the tips of infested trees. In the South the adults emerge on warm days during the late winter months, mate, and the females lay eggs in the axils between needles and stem near the terminal bud of host trees. On hatching, larvae bore first into the base of developing needles, and later into the new terminal growth or buds. There are two to four generations per year in the southern part of the tip moth's range.

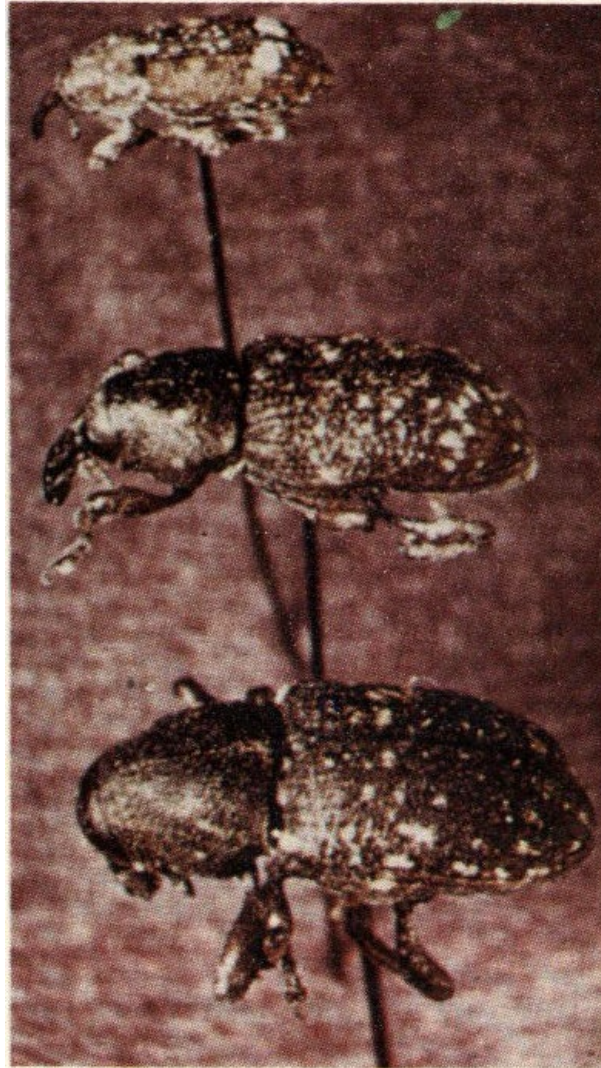
Chemical control is generally not considered practical in forest plantations, but several pesticides have proved effective in reducing insect damage in seed orchards.



***Newly emerged adult tip moth on a damaged shortleaf pine tip.***

**PALES WEEVIL, *Hylobius pales* (Hbst.)**

Pales weevil is perhaps the most serious insect pest of pine reproduction in the southeastern United States. Losses in susceptible areas commonly run 20-25 percent, but exceed 90 percent under circumstances favoring weevil development. Pales weevil is found throughout pine-growing regions of eastern United States and Canada. Feeding has been reported on most coniferous species, and all species of southern pines appear to be susceptible in varying degrees.



***Pitch-eating weevils in the genera Pachylobius, Hylobius, and Pissodes.***

Adult weevils are attracted by the odor of fresh pine resin, and quickly invade logging areas. Eggs are laid in lateral roots of fresh pine stumps, where they hatch in approximately five to ten days. Larvae feed on the inner-bark tissues of roots. At maturity, larvae usually construct a chip cocoon in a chamber cut into the wood, and pupate in the cocoon. On emerging, adults feed on the tender bark of seedlings, or twigs of trees. The small irregular feeding patches in the bark are characteristic of weevil damage. Heavy feeding girdles the stem or twig, causing wilting and eventual death. Newly emerged adult females feed for approximately one month before laying eggs. Females may lay eggs sporadically through two growing seasons. The average female lays about 50 eggs in her lifetime. In the South there are two peaks in adult weevil population each year; the first occurs in the early spring (March-May) followed by a second somewhat lower peak in July and August.

This insect can be controlled by delaying planting in cut-over areas for at least nine months, or by treating seedlings with a suitable insecticide.



***Adult pales weevil feeding on seedling.***

36

### **WHITE PINE WEEVIL, *Pissodes strobi* (Peck)**

The white pine weevil is generally regarded as the most serious insect pest of white pine. Although it usually does not cause mortality, trees suffering repeated attacks become stunted and deformed to the point of being commercially unusable. The weevil has become such a problem in some areas that it prohibits the growing of white pine. In addition to eastern white pine, the white pine weevils also attack Norway spruce and jack pine. Other pines and spruces are attacked to a lesser degree. The weevil is found throughout the range of eastern white pine.



***Pine leader damaged by the white pine weevil.***

During the latter half of April, the adults may be found on the terminal shoots of host trees where the female lays her eggs. Up to 200 eggs are deposited over a six-week period. The eggs are laid in feeding punctures in the bark, and hatch about two weeks later. Characteristically, the young larvae position themselves around the shoot and begin feeding as a group down the terminal through the inner bark. Small holes scattered over the bark are characteristic of white pine weevil attacks. After five or six weeks the larvae construct pupal chambers in the pith or wood of the terminal shoot and transform into adults. The young adults remain in the dead terminal until late October and November when they move to favorable overwintering sites on the ground, usually at the base of the host tree.

Control of the white pine weevil is difficult. It is possible, however, to reduce the damage by making conditions in a young stand unfavorable for egg laying. This is possible because the female weevil will only lay eggs within a rather narrow range of temperature and relative humidity. Various techniques involving the use of shade from "nurse trees" have been developed but require intensive management. Under certain circumstances, chemical control can be used.

37

### **PITCH-EATING WEEVIL, *Pachylobius picivorus* (Germar)**

In the Gulf Coast States the pitch-eating weevil is probably the most troublesome insect pest of pine seedlings. No accurate figures are available on the damage directly attributable to this pest, but mortality losses are estimated to average about 30 percent in susceptible areas. All of the southern hard pines and other conifers are probably suitable breeding and host material for the pitch-eating weevil. Its range overlaps that of the pales weevil, being reported from Labrador, Canada, south to Florida and west to Texas. It occurs in damage-causing numbers only in the Gulf Coast States.

Pitch-eating weevils breed in the roots of freshly cut stumps. The adults burrow down through the soil, sometimes a considerable distance from the stump, and lay their eggs in niches chewed in the root bark. On hatching, larvae mine the inner bark, packing their galleries with frass. Pupal cells are excavated in the sapwood, and a chip cocoon is constructed from the excelsior-like material removed during the cells' construction. Development time varies from six to ten months depending on when the stumps are initially infested. Emerging adult pitch-eating weevils feed by night on the tender bark of seedlings. Small irregular patches of bark are removed, eventually girdling the seedling and causing its death. The pitch-eating weevil exhibits a population trend similar to that of the pales weevil, and is a threat mostly in early spring and in the fall.

The most effective control for pine reproduction weevils is to wait nine months before replanting or until the stumps in an area are no longer attractive to the weevil. Chemical control can be used when such a delay is considered impractical.

38

### **DEODAR WEEVIL, *Pissodes nemorensis* (Germ.)**

This snout beetle is very similar to the white pine weevil both in appearance and habits. It is found throughout the south- and mid-Atlantic states from southern New Jersey west to Missouri. Although deodar cedar is the preferred host, Atlas cedar, Lebanon cedar, and several species of southern pines are also attacked.



***Galleries and chip cocoons of the deodar weevil.***

Adults emerge from April to May and feed briefly on the inner bark of leaders and lateral branches of host trees. Heavy feeding frequently girdles the stem and can kill small trees. The adults are dormant during the summer, but resume activity in the fall to lay their eggs. From one to four eggs are deposited in feeding punctures. The

newly hatched larvae bore into the inner bark where they construct winding galleries which girdle the stem. Evidence of such infestations is often delayed until January when the branches begin to turn brown. Winter is spent in the larval stage. The larvae pupate in March or April and the cycle is complete.

Keeping shade trees in a vigorous condition by proper watering and fertilization helps reduce their susceptibility to weevil attack.

### **CONEWORMS, *Dioryctria* spp.**

Coneworms are perhaps the most destructive insect pests of pine cones in the South. They are particularly serious in superior-tree seed orchards where they frequently cause substantial economic loss. There are five important species of coneworms in the South, one or more of which attack all of the native and exotic pines.



***Coneworm larva feeding on a pine shoot.***

Although the number of generations per year varies with the species, their general life history is similar. Female moths lay their eggs around wounds, cankers, galls, etc., but also deposit particularly on terminal growth. Eggs generally hatch in about a week. Larvae may stay at a single feeding site, or move to several different sites before completing their development. This latter behavior often results in a single larva destroying several cones or shoots. Pupation takes place in a chamber constructed by the larva at the feeding site. Depending on the species and time of year, the adult may emerge in two to three weeks or overwinter in the pupal stage. Coneworms cause several kinds of damage. They may mine through the inner bark, bore up the center of a shoot, or completely hollow out a cone. Their attacks are sometimes marked by fecal pellets and large pitch masses.



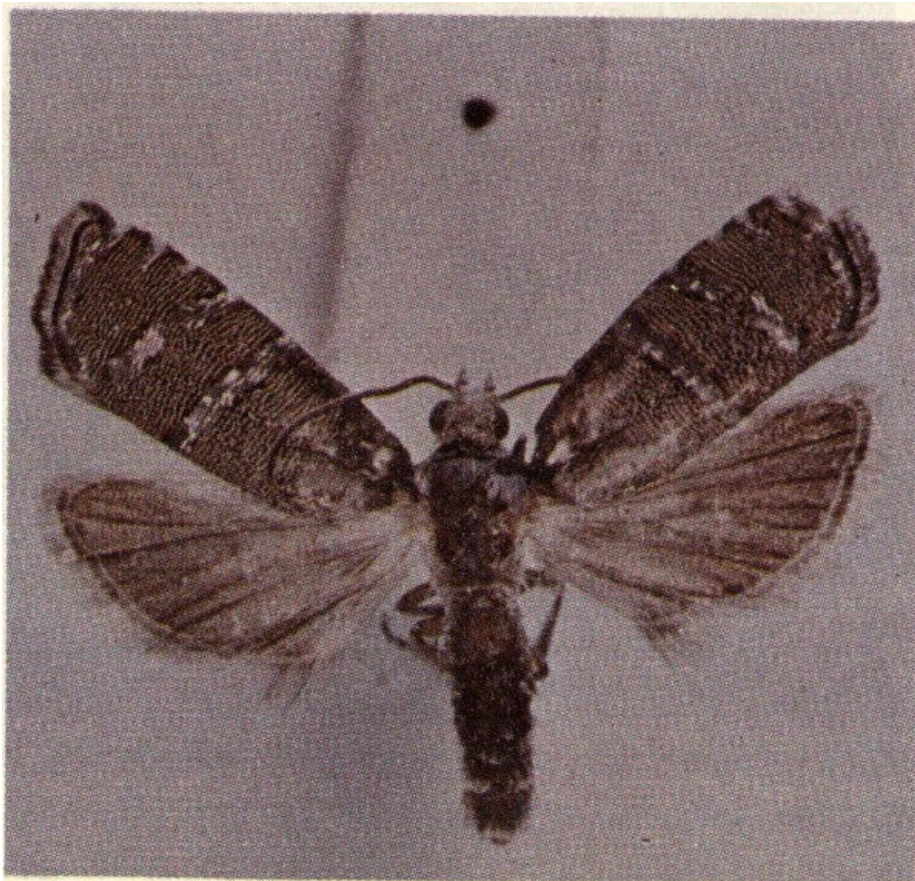
***Slash pine cone damaged by coneworm larva.***

Several parasites attack coneworms but are seldom effective enough to prevent population build-ups. Chemical control is often necessary on seed orchards to ensure adequate protection of the cone crop.

40

### **PINE SEEDWORMS, *Laspeyresia* spp.**

Until recent years little has been known about pine seedworms. These insects are found throughout the South but seldom have population explosions. An exception to this is on slash pine in Florida where over 70 percent of one year's cones were reported infested. Longleaf pine cones in Texas and Louisiana have also had over 60 percent cone infestation on occasion. Loblolly and shortleaf pine cones are seldom over 20 percent infested. Seedworms have been found infesting longleaf, loblolly, shortleaf, slash, and Virginia pine cones. *Laspeyresia anaranjada* Miller attacks primarily slash pine, occasionally longleaf pine, and rarely loblolly pine. *L. ingens* Heinrick attacks primarily longleaf and slash pine. *L. toreuta* Grote attacks Virginia, shortleaf, and loblolly pine in the South.



***Adult pine seedworm.***

The female moth lays eggs from April through May on second-year cones. There is one generation per year.

Larvae feed within developing seeds until the cone matures. In late fall, larvae either bore into the cone axis or remain in a hollowed-out seed, and overwinter. Pupation occurs within the cone and moths emerge through the hollow seeds. External evidence of seedworm attack is not visible in immature cones. As cones mature, damaged seeds are retained in the cone. Heavily damaged cones do not open properly. In high-value seed orchards and seed production areas some protection from seedworm attack may be obtained through the use of pesticides applied in a carefully timed program.



***Pine seedworm larva in longleaf pine seed.***

41

**BALSAM WOOLLY APHID, *Adelges piceae* (Ratzeburg)**



***Eggs and wool-covered adult balsam woolly aphids.***

The balsam woolly aphid was introduced into northeastern North America from Europe around the turn of the century. Since then it has become a pest of major importance to true firs on the east and west coasts of the continent, and threatens some 60,000 acres of Fraser fir in the southern Appalachians. Usually the balsam woolly aphid has two generations per year in the southern Appalachians. Eggs of the first generation hatch in late June

and July followed by the second generation in September and October. The immature stage of the aphid known as a “crawler” is the only motile stage in the aphid’s life cycle. Once the crawler begins feeding, it transforms into an adult and never again moves. Reproduction is parthenogenic with each female laying approximately 100 eggs during her lifetime.

In the feeding process the aphid injects a salivary substance into the host tree, which causes growth abnormalities. Initial symptoms of aphid attack may include “gouting” of buds or twig nodes and some twig and branch die-back. Heavy stem attacks reduce the tree’s ability to translocate food and water. Usually a heavily infested tree dies within two to seven years.

Chemical control is effective but extremely costly and thus limited to very high-value areas along scenic roadways. Other control measures include removal and destruction of infested material.



***Fraser fir infested by balsam woolly aphid.***

## **DISEASES**

42

### **NEEDLE CAST**

Needle cast is a very common disease of conifers throughout eastern and southern United States. Eastern white, loblolly, longleaf, pitch, pond, shortleaf, table mountain, and Virginia pines are all susceptible. *Hypoderma lethale* is probably the most common cause of needle cast on the above hosts, with the exception of longleaf pine. *Lophodermium pinastri* is also associated with needle cast.



***Hypoderma needle cast on loblolly pine.***



Current pine needles are infected in the early summer, and by winter or early spring begin to turn brown at the tips. At this time the tree usually has a scorched appearance. Later, the browning progresses down the needle and the fungal fruiting bodies are produced. These are small, black, elongated structures known as hysterothecia, which open along a slit during moist weather to release their spores. The infected needles are often "cast," leaving only the new growth, and causing the tree to have a tufted appearance.

Controls are seldom needed for this disease in forest stands. Infected trees usually recover and put out new foliage the year following heavy attacks. Nurseries or plantations should not be established in areas where needle cast is prevalent.



***Lophodermium needle cast on 2-0 nursery stock and 5 year old scotch pine, Spanish variety.***



### **BROWN SPOT NEEDLE BLIGHT**

Brown spot or brown spot needle blight is caused by the fungus *Scirrhia acicola*. Brown spot occurs in all the coastal states from Virginia to Texas, and inland to Arkansas and Tennessee. All southern pines are attacked by the fungus, but only longleaf pine seedlings are seriously damaged.



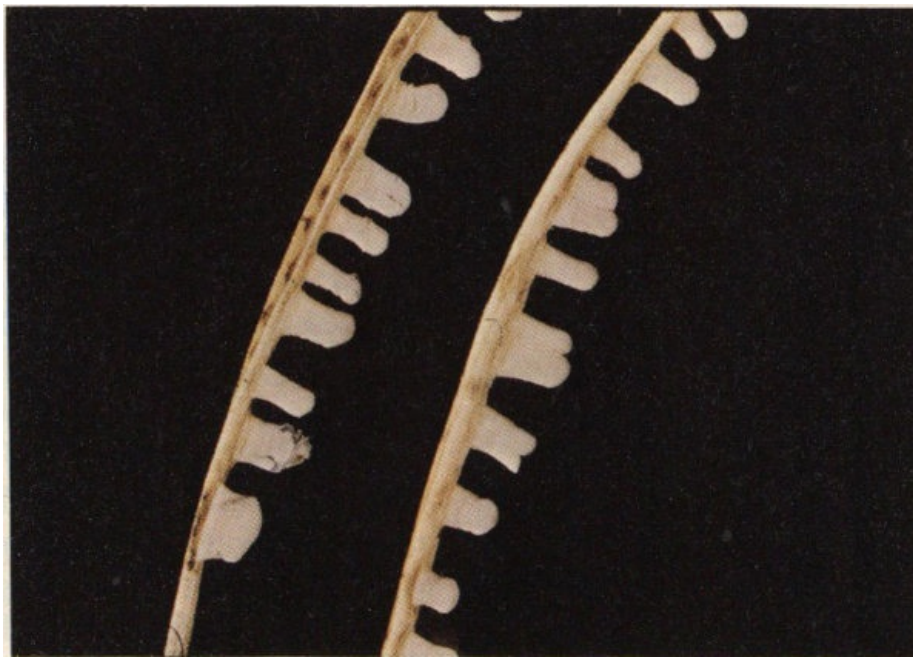
***Brown spot needle blight on longleaf pine reproduction.***

Initial infection of pine needles results in the development of small, circular spots of grey green color, which later turn brown. As the fungus continues to grow, a necrotic area encircles the needle, appearing as a brown band. The infected area will then increase in size, eventually resulting in the death of the needle. Fruiting bodies, called acervuli, develop in the dead areas of the needle. Spores are extruded from the acervuli in a water soluble gelatinous matrix throughout the entire year. The spores are washed apart and splashed short distances by rain drops. These spores spread the disease from seedling to seedling. During the winter and early spring, the sexual stage of the fungus is produced on dead needles. Ascospores, produced in a fruiting body called a perithecium, are light and wind-disseminated. These spores are responsible for disease spread. During the grass stage, seedlings often become heavily infected by the brown spot fungus, resulting in partial to complete defoliation. Seedlings which are nearly defoliated every year remain in the grass stage and eventually die. Three successive years of complete defoliation will result in death. The disease is very damaging during wet years, especially in areas where the fungus has become well established in the absence of controls.

The disease can be reduced by control burning during the winter months. On seedlings, fire burns the diseased needles and reduces the amount of available inoculum for reinfection, leaving the large terminal bud unharmed. Often a single prescribed burn reduces the disease intensity to such low levels that vigorous seedling height growth begins the following year. Fungicide sprays will also reduce brown spot on high valued trees.

44

## PINE NEEDLE RUST



***Fruiting bodies of pine needle rust on loblolly pine.***

Nearly all the native pines in southern United States are attacked by various needle rust fungi of the genus *Coleosporium*. This disease is very common, but causes little harm to the trees. Many species of this rust also attack broadleaved weeds in addition to the pines, needing both host types to complete their life cycle.

Needle rusts are most prevalent on young trees in the seedling to sapling stage. In the spring or early summer small, delicate white fungus "cups" filled with yellow to orange spores are produced on the needles. From a distance entire seedlings may appear to have a whitish or yellowish cast. Individual needles which are heavily infected may die, turn brown, and drop from the tree. However, the entire tree is rarely defoliated. Small red "rust pustules" form on the undersurface of the weed leaves. These are replaced by dark structures later in the summer.

The needle rusts are not important enough to warrant control in natural forests or plantations. If the weed (alternate) host is known, it can be eradicated around nurseries of susceptible pine species. However, it would be better to establish nurseries in rust free areas.

45

## CEDAR APPLE RUST

Cedar apple rust, caused by *Gymnosporangium juniperi-virginianae*, is important commercially in the apple-growing regions of the Virginias, Carolinas, and the Mississippi Valley. The alternate hosts of this rust are eastern red cedar and several species of junipers.



***Fruiting galls containing spores on cedar tree.***



***Fruiting on apple leaf the alternate host.***

Cedar "apples" or galls are the characteristic signs of the fungus on cedars. Cedar needles are infected in the summer by wind-borne spores from apple leaves. By the next spring or early summer galls begin to appear as small greenish brown swellings on the upper needle surfaces. By fall, the infected needle turns into a chocolate brown gall covered with small circular depressions. The following spring, orange jelly-like tendrils protrude from the galls producing an attractive ornament for the cedar tree. Spores produced from these orange spore masses are then capable of reinfesting apple leaves, thus completing the fungus life cycle.

No practical control of the rust on cedars is available because of the low value of cedar. However, considerable effort is expended to protect apple trees. Where apple is to be protected, cedars should be eliminated in the vicinity or, rust galls should be picked or cut off cedars before the galls mature.

## CEDAR BLIGHT

Cedar blight, caused by *Phomopsis juniperovora*, is most severe on eastern red and Rocky Mountain cedars. Other hosts include arborvitae, cypress, and Atlantic white cedar. The disease ranges from the mid-West to the Atlantic coast and south to Alabama where it is most common in nurseries.



***Needle symptoms on 1-0 eastern red cedar nursery stock and 5 year old Arizona cypress.***



Symptoms on red cedar resemble that of drought. The tips of branches are killed back and sometimes entire trees will turn brown. The fungus forms black fruiting bodies on needles and stem lesions. Fungus spores are distributed by rainwater; nursery overhead sprinkling systems also facilitate blight spread.

Control of cedar blight is initiated by removing and burning infected nursery stock early in the season before infection becomes heavy. Seedbeds should be well drained. Avoid introducing cedar stock to an infected nursery. The location of cedars in the nursery should be changed frequently and, where possible, cedar beds should be kept well away from older cedar or cedar hedges. Seedlings growing in low-density seed beds are more vulnerable to the blight; thus beds should be fully stocked. Cedar mulch should never be used on cedar beds. Avoid wounding nursery transplants. No economically feasible control is available for forest stands.

## FUSIFORM RUST



***Galls on 1-0 pine nursery stock.***



***Damage caused by fusiform rust infection.***

Fusiform rust, caused by *Cronartium fusiforme*, is one of the most important diseases on southern pines. This rust is found from Maryland to Florida and west to Texas and southern Arkansas. The rust's most important impact is in nurseries, seed orchards, and young plantations. Loblolly and slash pines are very susceptible to this rust. Pitch and pond pines are moderately susceptible, longleaf pine is fairly resistant, and shortleaf pine is highly resistant.

The most easily recognized symptom is the spindle-shaped canker on the pine branches or main stem. In early spring these swellings appear yellow to orange as the fungus produces powdery spores. As host tissue is killed, older stem cankers may become flat or sunken. Cankers often girdle trees and wind breakage at the canker is common. Fungus spores from the pine infect oak leaves. Brown hair-like structures, produced on the underside of the leaves in late spring, are the most conspicuous signs. These projections produce spores which in turn reinfect the pine trees, completing a "typical" rust cycle.



***Fruiting fusiform-shaped canker on main stem of southern pine.***

Silvicultural practices may lessen the incidence of infection in plantations. Avoid planting highly susceptible species such as slash and loblolly pines in areas of known high rust incidence. In these areas more resistant species such as longleaf or shortleaf pine should be planted. Pruning infected branches will prevent stem infection in young plantations. Rust-resistant pines should be readily available from the nurseries in the near future. Culling out seedlings with obvious galls before outplanting will reduce the disease incidence in new plantations.

48

## **WHITE PINE BLISTER RUST**

White pine blister rust, caused by *Cronartium ribicola*, was introduced to North America on nursery stock about 1900. It is the most important disease on white pine in the United States. In the South, the disease is found on eastern white pine in the Appalachian mountains.



***Fruiting cankers showing yellow-colored spores of blister rust on eastern white pine.***



The disease is caused by a fungus that attacks both white pine and wild and cultivated currant and gooseberry bushes, called *Ribes*. Both hosts must be present if the fungus is to complete its life cycle. Attack by the disease is followed by the development of cankers on the main stem or branches. Infected pines die when a canker completely girdles the main stem or when many of the branches are killed by girdling. The most conspicuous symptoms of the disease are the dying branches or crowns ("flags") above the girdling cankers, and the cankers themselves.

Initially, a narrow band of yellow-orange bark marks the edges of the canker. Inside this band are small irregular dark brown scars. As the canker grows, the margin and bank of dark scars expand and the portion formerly occupied by the dark scars is now the area where the spores that infect *Ribes* are produced. During the months of April through June white sacs or blisters containing orange-yellow spores (called aeciospores) push through the diseased bark. The blisters soon rupture and the orange-yellow spores are wind-dispersed for great distances. Generally, there is some tissue swelling associated with the canker, which results in a spindle-shaped swelling around the infected portion of the stem.

Loss of white pines from blister rust can be prevented by destroying the wild and cultivated *Ribes* bushes. Bushes may be removed by uprooting by hand, grubbing with a hand tool, or with herbicides. Pruning infected branches on young trees will prevent stem infections and probably tree mortality.





*Fruit gall showing orange colored spores on loblolly pine.*



***Alternate host—false toadflax.***

Comandra blister rust, caused by the fungus *Cronartium comandrae*, is a canker disease of hard pines. The disease presently occurs in widely scattered areas throughout the western, central, and southern United States. In the South, the primary hosts are loblolly, shortleaf, pond, and Virginia pine. Herbaceous plants of the genus Comandra, commonly known as false toadflax or comandra, are also attacked.

The fungus infects pines through the needles and grows from the needle into the branch or main stem where it forms a gall or canker. Dark orange-colored spores which are produced on the surface of the gall in the spring are wind-blown and infect the leaves or stems of the comandra plants. Two to three weeks after infection, urediospores are produced on the underside of the comandra leaf. These are wind-blown and can only infect other comandra plants. Eventually hair-like structures known as telia are produced on the comandra leaves and stems. The telia produce spores which are wind-blown and infect the pine host through the needle. The necessary combination of a susceptible pine host, the alternate host, and the pathogen is presently known to occur only in northern Arkansas, eastern Tennessee, and northern Alabama.

No effective method of controlling the disease in forest stands is presently known. Silvicultural or forest management practices which reduce the abundance of the alternate host offer promise of long term control. Maintenance of dense stands and heavy ground cover as a means of shading out the intermediate host plants, may be helpful in reducing rust damage in many areas.

### **EASTERN GALL RUST**

Eastern gall rust, caused by the fungus *Cronartium cerebrum*, attacks many species of eastern hard pines. The disease ranges eastward from the Great Plains and is most severe in the South on Virginia and shortleaf pines. Like most rusts this fungus requires an alternate host in addition to its pine host. In this case oaks, especially the red oak group (black, red, scarlet and pin) are the alternate hosts. Damage to the oaks is generally not of economic importance as only the leaves are affected.



***Fructing gall showing red-orange spores on Virginia pine.***

On pines the fungus causes the formation of globose to sub-globose galls. Canker formation occurs occasionally but mortality generally results from wind breakage at the gall rather than by canker formation as literally hundreds of galls may appear on a single tree. They are not lethal to the tree, but may ruin tree form and on a large stem they can lead to an open decayed wound, as decay fungi are often secondary invaders of rust infections. The shape of galls and the arrangement of the spore sacs filled with red-orange spores present a cerebriform (brain-like) appearance. During the spring the bright orange galls are very striking.

This disease is sometimes a problem in nurseries where seedlings are attacked and killed. This is where control efforts are concentrated. Fungicide protectants are applied to the seedling foliage to prevent infection from spores produced on oaks. Contact your local forestry extension agent or the nearest Division of Forest Pest Management for the latest recommendations. Under forest conditions, control is not economically feasible. Trees of poor form should be removed during thinning operations.

## **SOUTHERN CONE RUST**

Southern cone rust is caused by the fungus *Cronartium strobilinum*. It has been reported to completely destroy slash and longleaf pine cone crops in Georgia and along the Gulf Coast from Florida to Texas.



*Cone rust symptoms on slash pine.*



Like most other rusts, the fungus requires oaks and pines to complete its life cycle. Although infection of oak leaves occurs annually, no significant economic damage is done to the oaks. Fungus spores produced on oak leaves infect the mature female pine flowers about the time of pollination (January-February). The fungus grows through the developing conelet causing it to swell abnormally. By early April or late May the infected cones are three to four times larger than the normal first-year cones and even exceed the maturing second-year cones in size. The swollen cone scales are reddish in color. Cavities in the cone filled with orange-yellow spores burst and the cones become orange-yellow. The swollen orange-yellow cones in the tree crowns can be easily distinguished from normal cones by an observer on the ground. By late summer most of the diseased cones have died and fallen.

Control at present is confined to seed orchards. Hydraulic spraying of the flowers with fungicides gives a significant reduction in infections. Consult your local forester, county extension agent or the nearest Forest Pest Management Office for current control recommendations.

## PITCH CANKER

Pitch canker, caused by the fungus *Fusarium lateritium forma pini*, is rapidly becoming widespread throughout the South. The disease apparently is most serious on Virginia, slash and south Florida slash pine. The fungus also attacks shortleaf, pitch, and table-mountain pine.



***Pitch canker infection in terminal branch and main stem of pine.***



Pitch canker may cause tree mortality. On Virginia pines the fungus reportedly enters through small insect wounds in the twigs or mechanical wounds in the bole. Shoots may be girdled and killed within a few weeks, but it takes a period of years for the fungus to girdle the bole of larger trees. On slash pine the disease apparently attacks plantations in wave years. During years of heavy attack the fungus can cause rapid crown deterioration in addition to causing bole canker infections. Cankers on leaders in the crown can result in death of two-thirds or

more of the crown by mid-summer in a tree that appeared healthy in the spring. In the majority of tree infections only the leader and one or two laterals will be infected. The tree recovers in a few years with a crook in the bole as the only evidence of attack. Pitch cankers usually retain the bark and old cankers on the hole may be sunken. The most diagnostic characteristic of the disease, and the one that definitely separates it from similar disease, is the heavy pitch soak of the wood beneath the canker. Pitch cankers are often so soaked with pitch that heavy flow of pitch is observed flowing down the bole.

At the present time, no known method of control exists. Observations in slash pine plantations indicate that some trees are resistant while others range in their degree of susceptibility.

53

## WOOD DECAY

Wood decay of southern forest trees is responsible for nearly 80 percent of all loss attributed to disease. This decay is caused by fungi which mainly attack heartwood in the central portion of stems, branches, and roots. Wood-rotting fungi gain entrance into the tree through broken branches, wounds, and damaged or exposed roots. Spores, which land at these damaged areas, germinate and produce a microscopic mycelium which attacks and spreads throughout the heartwood. The decay is caused by the action of the mycelium, which penetrate the cell walls and dissolve or alter the wood in various ways. Fungus development within the tree may continue for many years without any apparent effect on the growth of the host. Eventually the mycelium will aggregate and break through the bark to form the reproductive stage, either before or after the death of the host. The fruiting body (sporophore, conk) produces vast amounts of spores which are capable of spreading the fungus to other trees.

Heartrots may be separated into broad classes on the basis of the host portion attacked, such as root rots, root and butt rots, stem rots, and top rots. Decay fungi may be further separated into two broad classes based on their effect on wood. The first class causes white rots, decomposing all components of the wood and reducing it to a spongy mass with white pockets or streaks separated by firm wood. The second class, causing brown rots, utilize the cellulose, leaving the lignin more or less unaffected. This usually results in a rot which appears as some shade of brown.

The separation of wood decay fungi on the basis of their host range, the portion of the host attacked, and the type of rot produced are useful aids to a pathologist in determining a tentative identification of the fungus responsible for a particular type of rot. However, there are numerous fungi which cause decay, many of which are exceptions to the various methods of classification. This forces the pathologist to use microscopic examination and various artificial keys to arrive at the proper identification of a given rot-producing fungus.



***Sectioned stump showing rot and decay in heartwood.***

54

## RED HEART

The fungus, *Fomes pini*, is the cause of a heartrot of widespread distribution. Common names for the rot produced by this fungus are: red heart, red ring rot, or white peck. The disease is commonly associated with mature and over-mature conifers, especially Douglas fir, larch, spruce, and pine. In the southern United States, the fungus attacks all species of mature pine.



***Fruiting body of redheart on southern pine.***

Generally, infection of all hosts occurs through dead branch stubs. Early stages of decay caused by *F. pini* are characterized by a discoloration of the heartwood, often appearing light red to reddish brown. The advanced stages of heartrot appear as elongated white pockets or flecks, formed parallel to the grain and separated by apparently firm wood. Often the pockets become resin filled. On southern pine hosts, the conks are often bracket-like or hoof-shaped. The upper surface appears dull grey to dark brown, with concentric furrows parallel to the margin of the fruiting body. The lower side is a light brown to brownish gold, rimmed by a velvety golden brown margin. Swollen knots result from the living wood tissue trying to overgrow the knot where a conk is forming.



***Cross section of infected tree showing rotted and decayed heart wood.***

In southern forest stands, heartrot damage may be reduced by harvesting mature pines prior to the age of extreme susceptibility to fungus attack. Some degree of shade tree protection can be obtained by pruning dead and dying branches flush with the main stem. This will allow the knot to be quickly overgrown by sap wood, preventing the heartrot fungus from entering through the branch stub.



***Fomes annosus* fruiting bodies on stump.**

Annosus root and butt rot is caused by the fungus *Fomes annosus*. This pathogen is common throughout coniferous stands of the North Temperate Zone. Hardwoods may be attacked, but damage is usually of minor consequence. In the South, the disease is most serious in pine plantations on sandy soils with low organic matter. All species of southern pine are susceptible. Slash and loblolly plantations are often severely affected.

The disease gains entry into plantations by spore infection of freshly cut stumps during thinnings. The fungus then spreads from the infected stumps to residual trees by growth along the roots to points of root contact. Residual trees usually begin to die within a few years after thinning. The sporophores or fruiting bodies are generally found at ground line or in the root crotch. Pines in initial stages of the disease usually exhibit sparsely foliated crowns; however, white pine with full crown may have extensive butt and root decay. Occasionally trees may die rapidly with a sudden red discoloration of a nearly full crown. Diseased trees are often found in groups or circular pockets in the stand. The indication of *F. annosus* decay may include the pink to violet stain of incipient decay, the narrow elongated white pockets and scattered black flecks in the wood of the early decay stages, and the yellow stringy rot of the late stages of decay.





***Infection center in pulpwood size pine stand.***

Control includes avoidance of planting on soils of low organic matter and elimination of thinning. Stump infection following thinning or harvest may be prevented using various methods.

56

### **BROWN CUBICAL BUTT ROT**

*Polyporus schweinitzii* is a common cause of root and butt rot of conifers throughout North America. The primary hosts of the fungus are Douglas fir, spruce, and pine. All southern pines are susceptible to attack by *P. schweinitzii*. Common names of the rot are: red-brown butt rot and brown cubical butt rot.



***Fruiting body of brown cubical root and butt rot of pine.***

The fungus enters living hosts through damaged roots, fire scars, and other wounds near the tree base. The initial stage of decay appears as a light yellow stain. In the advanced stage, the heartwood becomes brittle and breaks into large yellow-brown to reddish-brown cubes. The fungus develops primarily in the roots and butt and seldom extends more than 15 or 20 feet up into the stem. Diseased trees are subject to wind-throw and wind breakage. Although the volume of wood destroyed by the rot is small, the total volume lost through wind-throw is quite

large. Mature, suppressed, and weakened off-site trees are commonly attacked by the fungus. It is assumed that the fungus may also spread from infected to healthy trees through root contacts and grafts. The only outward signs of decay are the annual sporophores, which develop in late summer and fall during moist weather. Conks formed at the base of infected trees are bracket shaped, while those arising from decayed roots appear circular, sunken in the center, and supported by a short stalk. When fresh, the upper surface is velvety, concentrically zoned, and reddish-brown in color with a light yellow margin. The underside is dark olive or green with large irregular pores.

In forest stands, no method of controlling the disease is known. Losses may be prevented to some extent by reducing the amount of root damage and wounding from heavy logging equipment. The prevention of basal fire scars in conifer stands will also reduce the incidence of this disease. Trees which show signs of advanced root and butt rot should be removed from around recreation areas, parking lots, power lines, and buildings to avoid damage from wind-throw and wind breakage.

57

## RED ROOT AND BUTT ROT



*Fruiting body of red root and butt rot of pine.*

*Polyporus tomentosus* causes red root and butt rot of living conifers throughout North America. Common hosts of the fungus are: spruce, larch, pine, fir, Douglas fir, hemlock, and cedar. Throughout the southern United States, *P. tomentosus* has been reported in two general areas; causing extensive degrade of mature shortleaf pine in northern Arkansas and root and butt rot of slash pine in South Carolina, Georgia, and Florida.

The fungus is believed to enter living hosts through basal wounds and damaged roots. Under ideal conditions, the fungus may spread from infected to healthy trees by way of root contacts or grafts. Growth of the fungus is very slow, often causing host mortality 20 to 30 years after initial infection. Wood decayed initially appears firm, but dark reddish-brown in color. In advanced stages, the wood is flecked with elliptical white pockets separated by brown-colored wood. Infected conifers generally express typical root rot symptoms. Trees show evidence of reduced radial and internodal growth, accompanied by death of the crown from the base upward. The foliage appears off-color and reduced in length. Under moist conditions, sporophores are produced either at the base of infected trees or on the forest floor. Bracket-shaped sporophores are produced at the base of infected trees while stipitate conks are produced on the ground directly over infected or dead roots. Fresh sporophores appear yellow-brown in color from above with a lighter colored pore surface below.

No effective method of controlling the disease in forest stands is presently known. However, damage and losses may be reduced by management practices which reduce or eliminate the chance introduction of the disease into healthy stands. In areas where red root and butt rot is common, attempts should be made to conduct logging and thinning operations during the dry season to avoid mechanical damage to the root systems of the residual trees.

58

## LITTLELEAF OF PINE

Littleleaf of pine, caused by *Phytophthora cinnamomi*, is the most serious disease of shortleaf pine in the Piedmont region of the South. Loblolly is also affected, usually where associated with infected shortleaf pine. The disease is most evident in older age classes, rarely attacking stands under 20 years old.



***Needle symptoms and damage of littleleaf on shortleaf pine.***



The disease is caused by a malfunctioning of the root system due to a combination of biological and physical factors. A fungus, *Phytophthora cinnamomi* attacks and kills the root tips. When conditions of moisture, fertility, and drainage are adverse, they reduce tree vigor and prevent the tree from rapidly replacing the destroyed root tips. Trees on good sites are reportedly also attacked by the fungus, but their vigor is such that they quickly overcome the disease by producing new root tips. The disease usually progresses rather slowly. Some trees may persist fifteen or more years after the appearance of initial symptoms. In general, trees live only five or six years after attack, but they may die in as little as one year. Symptoms are those typical of trees in stress due to a malfunction of the root system. In the early stage of the disease the foliage may turn yellow-green and the current year's needles are shorter than normal. Later stages of the disease are sparsely foliated crowns with short needles (reduced from three to five to only one-half to three inches in length) and dead branches. Abundant foliage sprouting on the hole of infected shortleaf is common.

Losses are minimized by salvage cuttings and by favoring loblolly and hardwoods in regeneration plans.



***Defoliation of sycamore tree caused by sycamore anthracnose.***

Sycamore anthracnose, caused by *Gnomonia veneta*, is common on American sycamore throughout its range in the eastern United States.

Anthracnose is a disease characterized by distinctive limited lesions on stem, leaf, or fruit, often accompanied by dieback or blight and usually caused by fungi that produce slimy spores that ooze from small cup-shaped fruiting bodies that are visible with a hand lens. This disease has four distinct symptom stages identified as twig blight, bud blight, shoot blight, and leaf blight. Twig blight appears before leaf emergence and kills the tips of small one-year-old twigs. Infection comes initially from leaf litter and twig cankers. The second stage, bud blight, develops during bud expansion in April and early May. Shoot blight, the most frequently observed symptom, causes the sudden dying of expanding shoots and also young leaves. Leaf blight, the final stage, involves the actual infection of expanding or mature leaves. Diseased portions of the leaf involve irregular brown areas adjacent to the midrib and veins which are dotted with diseased spots. Incidence of anthracnose is directly related to the amount of spring rainfall. Shoot blight is severe if the weather for two weeks after leaf emergence is cool and moist. The disease may defoliate trees, which usually put out a new crop of leaves by late spring or summer.

Control of sycamore anthracnose under forest conditions is not economically feasible. Where the disease is prevalent, other species should be favored during thinnings. In shade and ornamental trees, pruning of infected twigs, burning of leaves, and fertilization will reduce the disease impact.



***Leaf and twig symptoms.***

60

## **WALNUT ANTHRACNOSE**

Walnut anthracnose is a fungus disease caused by *Gnomonia leptostyla*. This worldwide disease attacks most species of walnut in the United States. Black walnut is most severely affected, but with favorable weather for the fungus, even less susceptible individuals may be defoliated. Butternut, Persian walnut, and two species from California (Hinds walnut and California walnut) are all susceptible. Anthracnose has also been reported on species of walnut from most of the European countries, Argentina, Canada, and South Africa.

Wet weather greatly favors this leaf disease which may defoliate black walnuts by late July or early August. Defoliation slows growth, weakens trees, and sometimes causes mortality. Infected leaves reveal circular spots of dark brown or black. These spots often grow together, leaving large dead areas. These spots or blotches are bordered with yellow to golden tissue. While severely affected leaves fall, some "anthracnose" leaves remain on the tree. This disease also affects the growth and quality of the nuts. Nutmeats from infected trees are dark, unattractive, and shrivelled. Sunken, killed areas appear on the husks as dark circular spots smaller than those on the leaves. Infected nuts, like the leaves, may also fall from the tree. Lesions may appear on the current year's shoots and later form dead sunken areas that are oval to irregularly circular with reddish brown margins.

As with the other anthracnose diseases, no practical control is available for forest trees. Control of walnut anthracnose on ornamentals and nut trees is partially achieved by raking and burning of old leaves.

61

## **OAK ANTRHACNOSE**



**Leaf symptoms of oak anthracnose.**

Oak anthracnose is caused by the fungus *Gnomonia veneta*. Trees of the white oak group, particularly white oak, are susceptible to this disease. Oaks throughout the entire eastern United States are affected by the disease, although it is less common in the Northeast.

Infection occurs in the early spring or mid-summer. Symptoms on leaves develop as irregular brown diseased areas (blotches) along the midrib and the major side veins. These blotches may grow together by late spring or early summer if infection occurs early. Blotches are usually confined to the areas bordered by the larger veins. Leaves on the lower branches are frequently killed and occasionally trees will be defoliated. However, a second crop of leaves soon develops and mortality is rare. Fruiting bodies of *Gloeosporium*, the imperfect fungus fruiting stage of anthracnose, are located on the midrib and veins of infected leaves. When the disease spreads to the twigs, cankers and crown dieback may occur. The anthracnose fungus overwinters on diseased twigs and in the leaf litter. Oak anthracnose has the same causal agent as sycamore anthracnose, and the weather conditions favoring the sycamore disease also increases the anthracnose on oak.

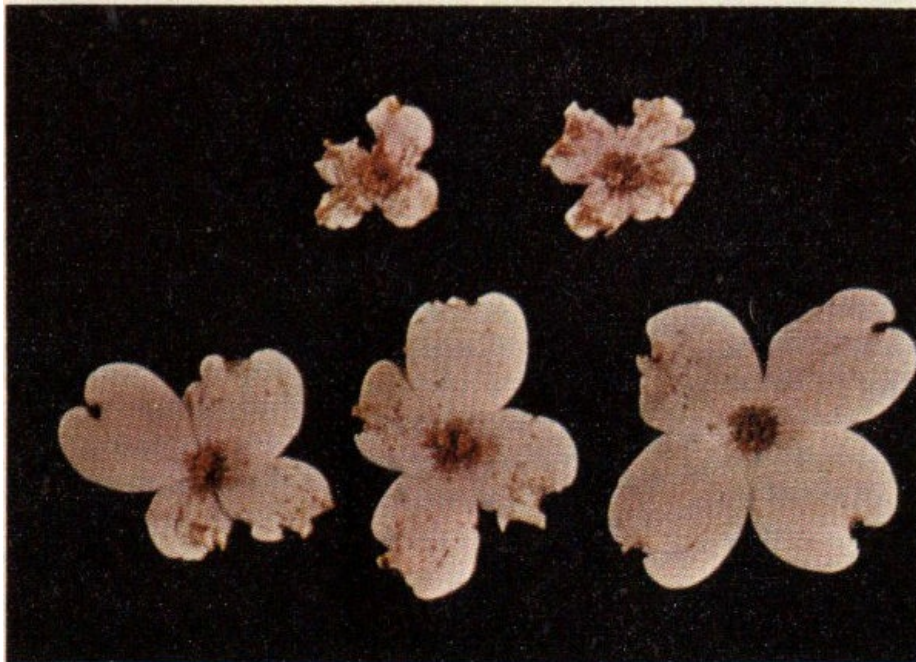
Control is similar to sycamore anthracnose and involves an integrated program of pruning disease tissue, fertilization, and burning of leaf litter. No practical control is available for forest trees.

## **DOGWOOD ANTHRACNOSE**

Dogwood anthracnose, caused by the fungus *Elsinoe corni*, occurs in states bordering the Atlantic Ocean and has also been reported in Louisiana. Its primary host is flowering dogwood, *Cornus florida* L.



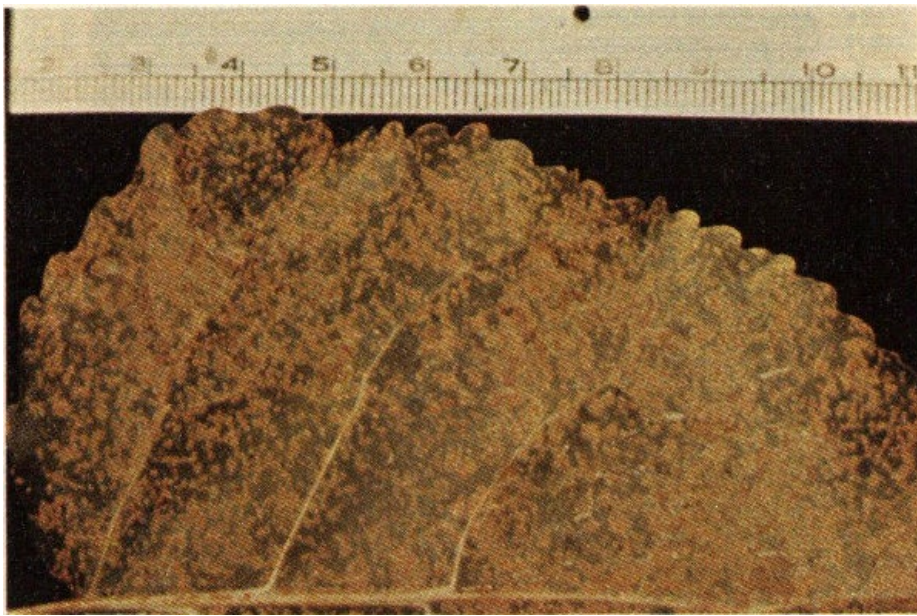
***Leaf and flower symptoms of dogwood anthracnose.***



Anthracnose occurs in the spring and affects not only the leaves, but also the buds and "flowers". The buds may fail to open or they may produce stunted flowers. These have many circular to elongated spots with light tan centers. Margins of these spots are purple to brown. Often the flowers abort before development. Foliage spots (1-2 mm. in diameter) are raised at the margins. They are purple at the edges and yellow-gray in the center. Later centers of spots may fall out causing a "shothole" effect. Dozens of spots may be present on a single leaf and may be scattered or concentrated at tip, margin, or midrib. Twisting and malformation of the leaves are common. In addition to floral and foliage spots, infected areas may also occur on petioles, stems, and fruit clusters. All three areas have spots similar to those on the foliage.

Other diseases which may be confused with anthracnose include *Septoria* and *Ascochyta* leaf spots. *Septoria* usually begins around July and unlike anthracnose has more angular lesions that are between the veins. *Ascochyta* spots may be larger (6 mm. in diameter) than anthracnose, and tissue discoloration may extend outside of their borders. Occasionally the leaves may totally blacken. This disease may occur as early as June.

Wet, humid weather at certain stages of plant development is required for infection. Homeowners may obtain effective control by removing and burning infected plant parts. Various fungicide sprays are recommended by authors of ornamental handbooks.



***Rust infected cottonwood leaf.***

Cottonwood rust, caused by *Melampsora medusae*, is probably the most important leaf disease of cottonwoods wherever they are grown. In the Lower Mississippi Valley, all sizes of eastern cottonwood trees may be infected with this rust. However, the disease is probably of most importance in cottonwood nurseries.

In mid-summer, yellow to orange pustules containing spores of the fungus form on the under surface of the cottonwood leaves. In late summer and early fall, dark brown fungal growths replace the orange structures. Cottonwood may be prematurely defoliated or even killed by successive attacks. The rust may weaken trees and subject them to attack by other disease-causing organisms. Also, there is often a reduction in growth in these normally fast growing species. This is very important since there is presently a wide interest in the use of hybrid poplars for pulp and timber production.

There is generally no accepted control for cottonwood rust. Rust-resistant varieties of hybrid and exotic cottonwoods are being developed and may provide the best control of this disease.

## **BLACK KNOT**





***Black swellings of cherry black knot.***

Black knot, caused by *Dibotryon morbosum*, is prevalent throughout the Southeast (with the exception of southern Florida) wherever black cherry grows, and in orchards on plums and domestic cherries.

The most prominent symptoms are the elongated black swellings which appear in summer on small twigs and branches. Heavily infected trees appear quite grotesque, with large swellings which may be several times the diameter of the twigs. Cankers occurring on black cherry trunks usually ruin the commercial tree value. Initial infection occurs on lateral branches and twigs in the spring, but the swellings do not become noticeable until the following spring.

The most practical control for black knot is removal of infected black cherry from the stand. Twigs and branches with knots should be burned.

### **NECTRIA CANKER**

Nectria canker of hardwoods, caused by *Nectria galligena* and *N. magnoliae*, is frequently found on yellow birch and black walnut. Common hosts also include bigtooth aspen, sassafras, northern red oak, red maple, beech, Carolina poplar, paper birch, and sweet birch. A closely related canker disease is also found on yellow-poplar and magnolias. The range of this disease includes the Lake States, the Northeast, and the southern Appalachians.



***Target-shaped canker of Nectria on sassafras and yellow-poplar.***



Older Nectria cankers are easily recognized in forest stands because of their typical “target” shape. “Target” cankers have rings, each of which represent a year’s growth. Younger cankers tend to be grown over by bark and callus tissue attempting to heal the wound. Such cankers are difficult to recognize, but close examination of the affected area may reveal tiny red bodies, which are the fruiting bodies of the Nectria fungi. Mortality rarely occurs from this disease, but stems may break at canker locations during high winds.

Control of Nectria canker is the same as for Strumella canker—the removal of infected trees during thinning

## STRUMELLA CANKER

Strumella canker of hardwoods, caused by *Strumella coryneoidia*, most frequently attacks trees of the red oak group. Other hosts include species in the white oak group. Beech, basswood, blackgum, shagbark hickory and red maple are also occasionally affected. This disease is found in the East, from the southern Appalachians to northern New England.



*Strumella canker on black oak.*

Strumella cankers are of two types: diffuse, and the more common "target-shaped." The first develops on smooth-barked saplings and rapidly girdles and kills the tree. Killing results because callus tissue, which tends to heal over cankers, does not have time to develop. Target-shaped cankers are more common. "Targets" are formed by the alternation of killing of bark by the fungus around the canker's perimeter and the formation, in turn, of a callus ridge by the host tree. The fungus is active usually in the dormant season, while callusing occurs in the spring. As with most canker-causing fungi, *Strumella* usually enters the tree through a branch stub. Cankers are quite large and may reach several feet in circumference or length. The presence of the causal fungus is revealed by dark brown, cushion-like structures about one to three millimeters in diameter on the dead bark and surrounding tissue.

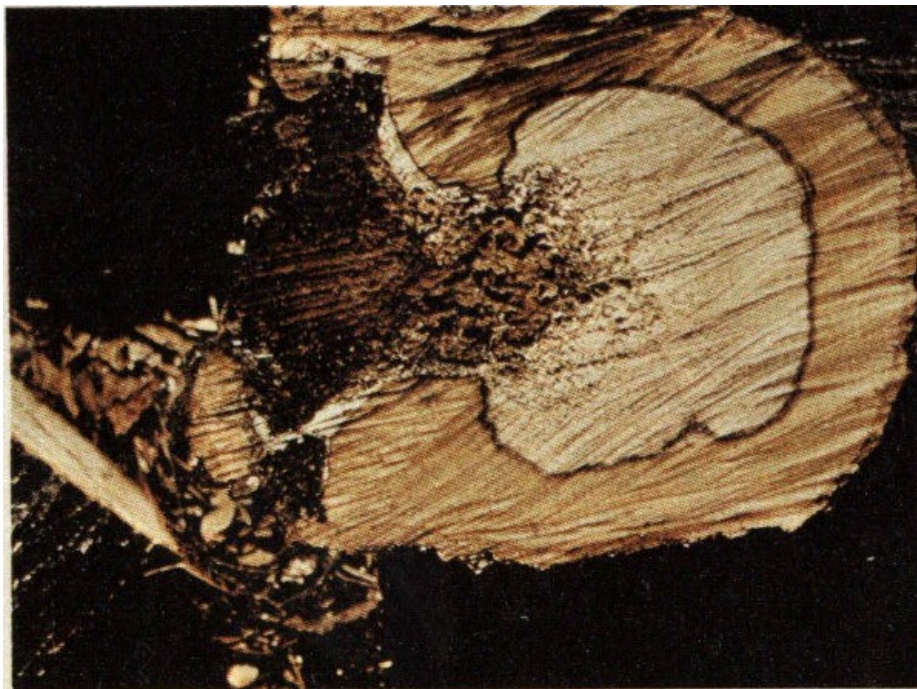
No feasible control method is available under forest conditions. However, the disease impact can be greatly reduced by removing cankered trees during thinning operations.

## SPICULOSA CANKER

Spiculosa canker, caused by *Poria spiculosa*, is found on bottomland oaks in the South. Occasionally this disease will also degrade hickories and honeylocust.



***Fruiting body of Poria rot and canker on oak.***



***Cross section of tree showing rot and decay.***

Spiculosa canker is considered to be a canker-rot disease, a type of decay in which the causal organism incites not only heart-rot but also large irregular cankers. Infected trees have cankers that appear as rough circular swellings on the bole. The canker centers are depressed and old branch stubs are discernible. Fungus fruiting bodies, or conks, usually are not present on living trees but develop on snags or decayed logs. The conks grow flat under the bark and push it off to expose the brown fungus fruiting surface.

Control for Spiculosa canker is similar to other canker rots: salvage to remove undesirable cankered trees that may be later replaced by better quality trees.

## **IRPEX CANKER**

Irpex canker, caused by *Irpex mollis*, is prevalent in bottomlands and on upland areas of the Southeast. In the

bottoms, Nuttall, water, and willow oaks are affected. White, chestnut, southern red, and black oaks are the hosts of this disease on upland sites.



***Fruiting body of Irpex rot.***



***Cross section of tree showing rot and decay.***

Irpex canker is also considered to be a canker-rot disease. Symptoms on infected trees frequently involve irregular cankers up to two feet in length. Cankers are usually found on trees eight to ten inches in diameter or larger, at a height of twenty feet above the ground. Branch stubs, signifying probable infection points, are usually present in the centers of cankers. The portion of the trunk affected is usually swollen but sometimes may be sunken. At the base of the sunken portion of the canker are small, creamy-white, toothed fruiting bodies or conks with a leathery texture. Conks also appear on hardwood logs. The wood behind cankers is characterized by a tough, spongy, white rot which extends as much as eight feet above and below the canker. The decay pattern may also extend downward into the roots. In cross-section, the rotted areas appear as finger-like projections radiating out toward the sapwood. Gradually the rot column tapers to a thin central core beyond which white flecks appear, and this early rot stage is concentrated along the rays of the oaks.

Control for Irpex canker is the same as for other canker-rots—salvage of undesirable cankered trees.

## HISPIDUS CANKER

*Polyporus hispidus* is the cause of trunk cankers and localized decay of hardwoods throughout eastern, central, and southern United States. The fungus is also known to attack hardwoods in Oregon and California. Reported hosts are: hickory, ash, mulberry, willow, walnut, and oak. In the south, *P. hispidus* is common on oaks, including willow, water, black, white, Nuttall, and cherrybark.



***Fruiting body and canker of Hispidus on oak.***

The fungus usually enters the tree through dead branch stubs, from which it grows into the heartwood. After becoming established, the fungus begins penetrating the sapwood and attacks the living cambium. Callus folds are formed by the host around the dead cambial area, forming an elongated swollen canker, commonly referred to as a "hispidus canker". The cankered area of the stem is bark-covered and sunken, usually containing a remnant of a branch stub or branch scar. During late summer, fall or early winter, the fungus produces conks (sporophores) on the surface of the cankers. The annual bracket-shaped conks are large, spongy, and yellowish-brown to rusty-brown on the upper surface. When fresh, the under surface is a light tan color. After a few months, the mature conks dry to a rigid black mass and fall from the canker. Old conks are commonly found at the base of cankered trees during the spring and early summer. Decay produced by the fungus appears spongy, light yellow, and is commonly separated from the sound wood by a black zone line. The rot is of the delignifying white rot type. On southern oaks, the rate of canker elongation has been estimated at one-half foot per year, with the internal rot usually extending about one foot above and below the cankered area.

No effective control in forest stands is known. Removal of diseased trees provides additional growing space for crop trees. Some degree of shade tree protection can be obtained by pruning of dead branches flush with the main stem of the tree.

## BOTRYOSPHAERIA CANKER

*Botryosphaeria ribis* causes cankering and mortality of more than 50 woody plants. The fungus is widely distributed throughout the eastern one-half of the United States. The pathogen infects the following economically important hosts: sweetgum, redbud, willow, poplar, tupelo, pecan, and hickory.



***Botryosphaeria canker on sweetgum.***

The fungus gains entry into susceptible hosts primarily through wounds or dead and dying twigs. Small oval cankers on stems or branches are the first symptoms of infection. As the fungus continues to attack and kill the cambium, the sunken cankers enlarge, eventually girdling and killing the branch or stem above the cankered area. In the spring and early summer, cankers on living portions of the host often produce an exudate. Infected sweetgums generally produce the exudate in great quantities, to which the common name of bleeding necrosis has been applied. Reproductive structures called stroma are produced by the fungus on dead cankered stems and branches during moist periods of the spring and summer.

No practical method of control is known. Diseased trees seldom recover. Infection of high value shade and ornamental trees may be prevented to some degree by avoiding mechanical damage. Dead limbs and branches should be pruned and wounds covered with a suitable tree paint. Infected trees should be removed and burned.

## **SEPTORIA CANKER**



***Septoria canker on young cottonwood saplings.***

Septoria canker is caused by the fungus *Septoria musiva*. Although this is a disease of poplars, native poplar species are not severely attacked. However, this is an important problem wherever hybrid or introduced poplars are grown. With the ever-increasing emphasis on poplar planting, this will probably become a much more important problem in the near future.

Young stem cankers usually develop around openings such as wounds, lenticels, or leaf scars, appearing first as sunken, dark areas of the bark. The infected area later becomes more depressed and darker as tissue dies, and often a black margin will be formed around the canker. Small, pink, hair-like spore tendrils are produced by the fungus around the canker margin, especially during moist weather. These tendrils contain spores which can cause further infection, and arise from small dark fungal fruiting structures called pycnidia. This cankered area is often invaded by insects and other fungi and is also a weakened area at which wind breakage may occur. The fungus also causes a gray to black leaf spot, which usually has a light colored center. These spots may coalesce on a severely infected leaf and involve the entire leaf surface. This leaf spot in itself causes slight damage, but acts as a source of fungus spores which can cause stem cankers, and thus is important in the overall consideration of the disease.



***Defoliation in cottonwood caused by Septoria leafspot.***

A control for this disease is to use native poplars or resistant hybrids wherever possible. Wider spacing in plantations may also reduce the humidity, decreasing the amount of infection.

## **CYTOSPORA CANKER**

Cytospora canker is caused by *Cytospora chrysosperma*. This fungus attacks more than 70 species of hardwood trees and shrubs as well as some conifers. Poplars and willows are among the most common hosts, and are attacked throughout their range. Trees used for shade or windbreak, and also cuttings in propagation beds are particularly susceptible to this canker. This disease is most severe on trees growing under stress, such as those growing on an unfavorable site, or injured by drought, frost, fire, or severe pruning. The fungus is a normal inhabitant of the bark and becomes parasitic only when the tree is weakened.





***Cytospora canker on cottonwood.***

A canker begins as a gradual, circular killing of the bark of a limb or stem. This infected tissue soon appears as a brownish, sunken patch, around which the host often produces raised callus tissue. Small black fungal structures (pycnidia) appear as small pimples on the dead bark. During moist weather, thin threads of spores exude out from the pycnidia. The inner diseased bark becomes dark and odorous. The cambium is killed and the sapwood becomes watery and reddish brown as it becomes infected. Water spouts may form below the canker before the tree dies.

Since this disease is most severe on weakened trees, shade trees should be watered and fertilized to maintain healthy, vigorous growth. Wounding and severe pruning should be avoided. Cuttings should be selected from healthy planting material grown in disease free areas. If cuttings are to be stored for any length of time, they should be kept at a temperature below 35°. This low temperature will keep new infections from occurring, even if spores are present.

## **CHESTNUT BLIGHT**

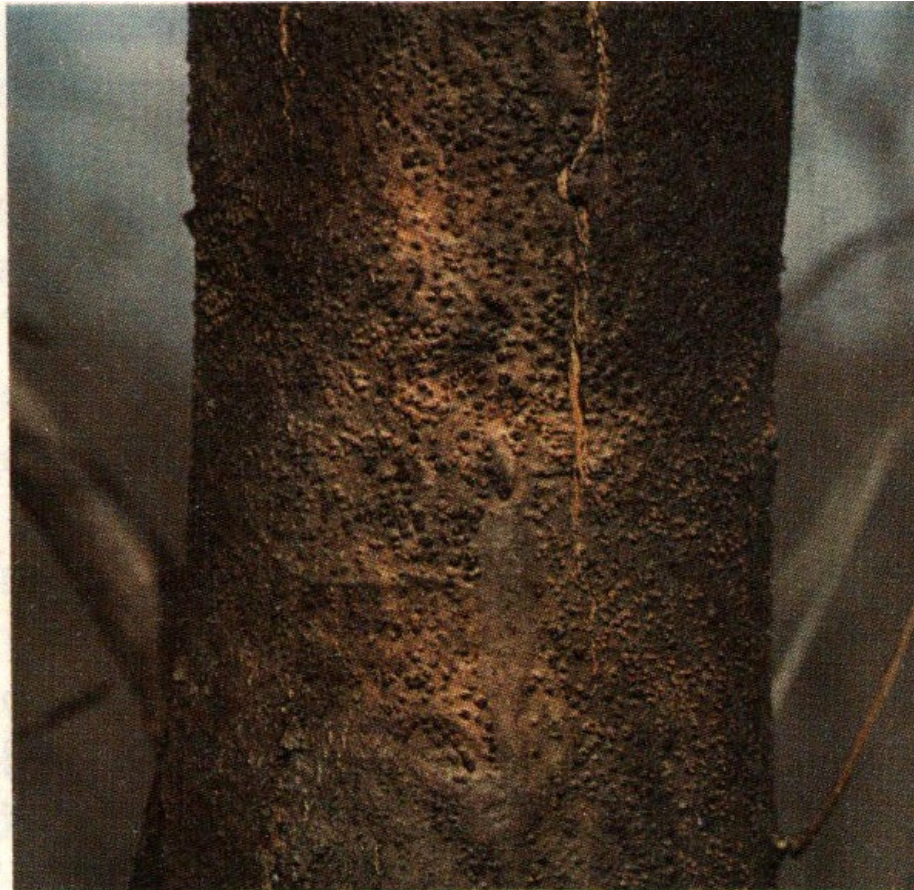


***Stem canker caused by chestnut blight organism.***

Chestnut blight is caused by the fungus *Endothia parasitica*. It can be found on American chestnut throughout its range where it has virtually eliminated this valuable species from eastern hardwood forests. The chestnut blight fungus is also parasitic on other hosts including common chinkapin, Spanish chestnut, and post oak. Japanese and Chinese chestnuts are resistant.

Stem cankers are either swollen or sunken and the sunken type may be grown over with bark. The fungus forms fruiting bodies some distance back from the advancing cankers, and the spores may exude from bark crevices as orange curl-like masses during moist weather. Young cankers are yellow-brown in sharp contrast to the normal olive-green color of the bark. The chestnut is a vigorous sprouting species but the fungus survives in previously killed stumps and later kills the new sprout growth.

No effective control has been developed for chestnut blight, even after several decades of intensive research. The most promising control involves the development of a blight-resistant species. Research is presently underway on this matter but results are inconclusive.



***Fruiting bodies on surface of canker.***

## OAK WILT

This serious vascular wilt of oaks is caused by the fungus *Ceratocystis fagacearum*. At least fifty species and varieties of oak are susceptible. The disease has been most damaging in the Lake States but is also found in the eastern United States.



***Oak wilt symptoms on red oak trees and leaves.***



Oak wilt symptoms are most noticeable during late spring or early summer. Red oaks may be killed in as little as three weeks, the lower branches being affected last. In white oaks, symptoms are usually confined to a few branches each year and trees may live several years before death. Leaf symptoms are similar for both red and white oaks. Leaves turn yellow or brown and become dry progressively from the edge or tip to the midrib and base. Mature leaves may fall at any symptom stage from green to brown. Premature leaf shedding is the most outstanding symptom. A definite characteristic of the disease is the raising and cracking of the bark due to pressure of mats of the fungus growing between the bark and wood.

Oak wilt is spread over long distances by insects that pick up spores while crawling on the mats of infected trees. The disease may also spread from tree to tree via root graft. Short-distance spread is controlled by severing all roots of living trees around infected trees by use of a ditchdigger. Another control is to fell all trees in a 50-foot radius of infected trees; felling and burning of all parts of infected trees is sometimes done to prevent overland spread.

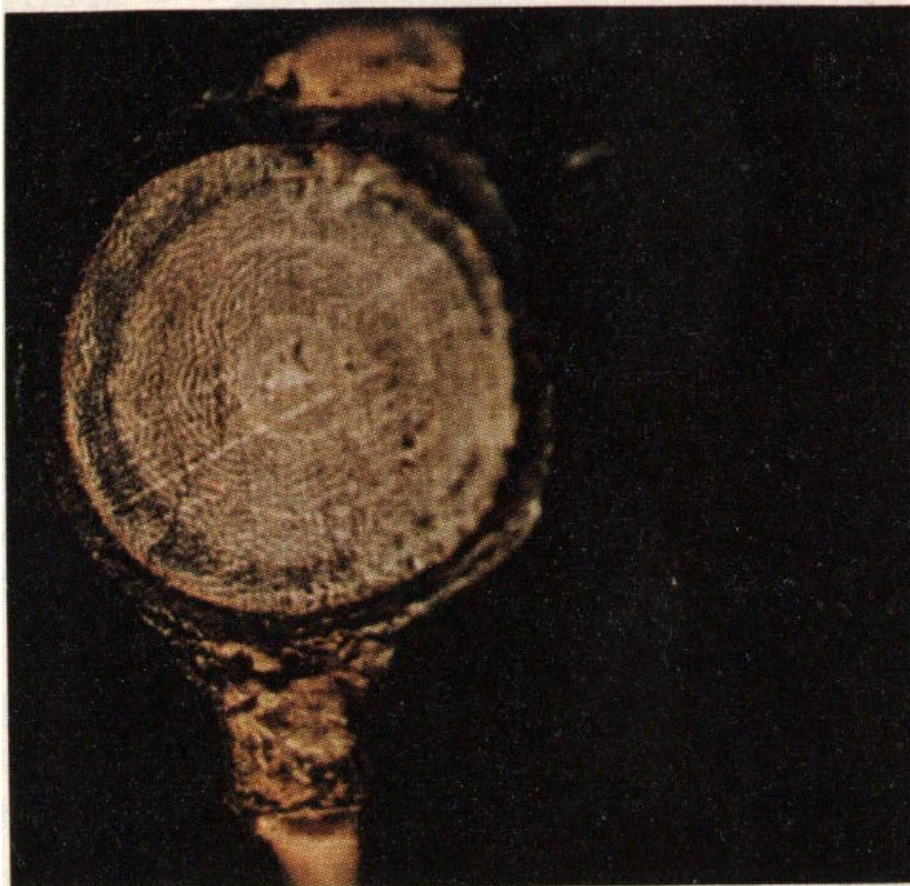
## **DUTCH ELM DISEASE**



***Dying tree infected with Dutch elm disease.***

Dutch elm disease, caused by *Ceratocystis ulmi*, is the most devastating disease of elm trees in the United States. This disease has been recorded in most states east of the Mississippi and as far as Idaho in the Northwest and Texas in the Southwest. All of the native elm species are susceptible, while many of the ornamental Asiatic species are highly resistant.

Trees suffering from Dutch elm disease may show a variety of symptoms. Leaves become yellow, wilt, and turn brown. Premature defoliation and death of branches usually occurs, causing the crown to appear thin and sparse. Internally, a brown discoloration appears in the outer sapwood. *C. ulmi* is transmitted from diseased to healthy elms by elm bark beetles, mainly the small European elm bark beetle and the native elm bark beetle. These beetles make characteristic galleries under the bark of dead and dying elms. Adult beetles pick up the sticky fungus spores from under the bark and then feed on the young tender elm twigs of healthy trees, inadvertently inoculating the healthy tree with the fungus. The fungus may also spread from diseased elms to adjacent healthy elms through root grafts.



***Discoloration and streaking symptoms in the sapwood.***

Controls to combat this disease generally involve sanitary measures aimed at the beetles. Dead and dying elms should be burned. This eliminates the elm wood which normally serves as a breeding place for elm bark beetles and thus reduces the beetle population. In areas where most native elms are infected, other tree species or resistant elm species, such as the Chinese or Siberian elm, should be planted rather than native elms.

76

### **ELM PHLOEM NECROSIS**

Elm phloem necrosis is a disease of elm, caused by a virus or virus-like organism. The disease has occurred in the United States for many years, probably as early as 1882. The pathogen is transmitted from infected to healthy trees by the adult white-banded elm leafhopper, *Scaphoideus luteolus*, which feeds on the leaf veins. It is now present throughout most of the central, eastern, and southern portions of the United States. The disease is known to occur on American and winged elm, but all native elms are probably susceptible to attack by the pathogen.



***Foliage symptoms of elm phloem necrosis.***

The earliest symptoms of the disease appear in the top of the crown, at the outer tips of the branches. Here the elm leaves suddenly wilt, turn yellow, the margins curl upward and the leaves die. Leaf-fall causes the crown to appear sparse. In large trees, the foliage symptoms may initially appear on one branch or only a portion of the crown. However, the symptoms during the advanced stage of the disease are exhibited throughout the crown. The most reliable symptom appears as a yellow to butterscotch discoloration on the inner bark surface or phloem. This symptom initially appears under the bark of large roots, later spreading to the base of the main stem and finally to the larger branches. Phloem and cambial discoloration is often found in advance of the foliage symptoms. The moderately discolored phloem has a slight odor of wintergreen. Thus far, all trees known to be infected with the pathogen have died. Acutely infected trees, while initially appearing healthy, may wilt and die in three to four weeks.



*Stem sample showing discoloration of sapwood.*

No effective controls are known. The “Christine Buisman” elm, which is highly resistant to Dutch elm disease, has demonstrated resistance to elm phloem necrosis.

## **MIMOSA WILT**



***Mimosa branches showing wilt symptoms.***

A vascular wilt of the mimosa (silktree) is caused by the fungus *Fusarium oxysporum forma perniciosum*. The fungus is known only to attack the mimosa, a tree imported from eastern Asia and grown throughout the southeast as an ornamental. Since the discovery of the disease in North Carolina in 1935, the fungus has spread north to Maryland, south to Florida, and west to Texas.

The fungus causing mimosa wilt is soil-borne and gains entrance into the tree by attacking the roots. Once entrance is gained by the fungus, the pathogen enters the outer water-conductive system in the sapwood. As the fungus grows throughout the system, it hinders or completely inhibits the water movement from the roots to the aerial portion of the tree. The first outward symptom of disease is the wilting of leaflets, usually in the upper portion of the crown. The wilted leaflets turn yellow, then brown, and die. Often a branch or two will succumb at a time until the entire crown is dead. A second symptom of the disease is found in the outer sapwood of the tree. A brown discoloration, appearing as spots or a ring, is observed by cutting into the outer sapwood of the infected stem or branch.

Control of the fungus is very difficult, since it is soil-borne and enters through the roots. However, resistant varieties of mimosa trees, developed by the U.S. Department of Agriculture, are now available at most commercial nurseries.

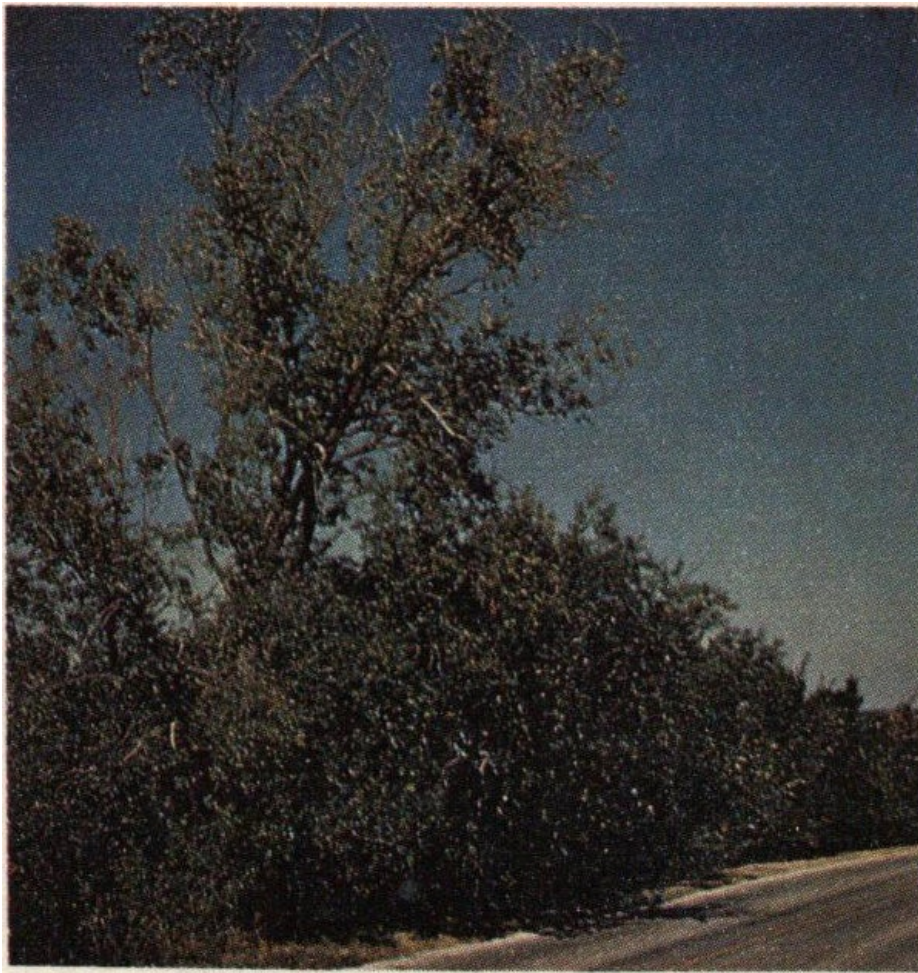




***Branch sample showing brown discoloration of sapwood.***

## **VERTICILLIUM WILT**

Verticillium wilt, caused by common soil-inhabiting fungi belonging to the genus *Verticillium*, is found on a number of hardwood hosts. In southern and eastern United States elms and maples are attacked throughout their natural ranges.



***Wilting foliage and defoliation of elms caused by Verticillium wilt.***

Infected trees may die within a few weeks after the first symptoms are observed, or they may survive for years. The first symptoms of the disease involve a wilting of the foliage, with the leaves turning yellow and finally brown. The early symptoms are often restricted to a single limb or portion of the crown. Vascular discoloration, which is brown in elms and green in maples, is present in the outer sapwood. In elms, this discoloration is similar to that produced in trees having Dutch elm disease.

This disease is not of serious consequence in forest stands. However, it is often extremely important in high value shade trees. Dead or dying limbs on lawn trees may be pruned out. This may not always save the tree, but may help keep it alive for years. Trees should be well watered and fertilized as necessary. If a lawn tree dies from Verticillium wilt, it should be replaced by a resistant species.

## **ARMILLARIA ROOT AND BUTT ROT**

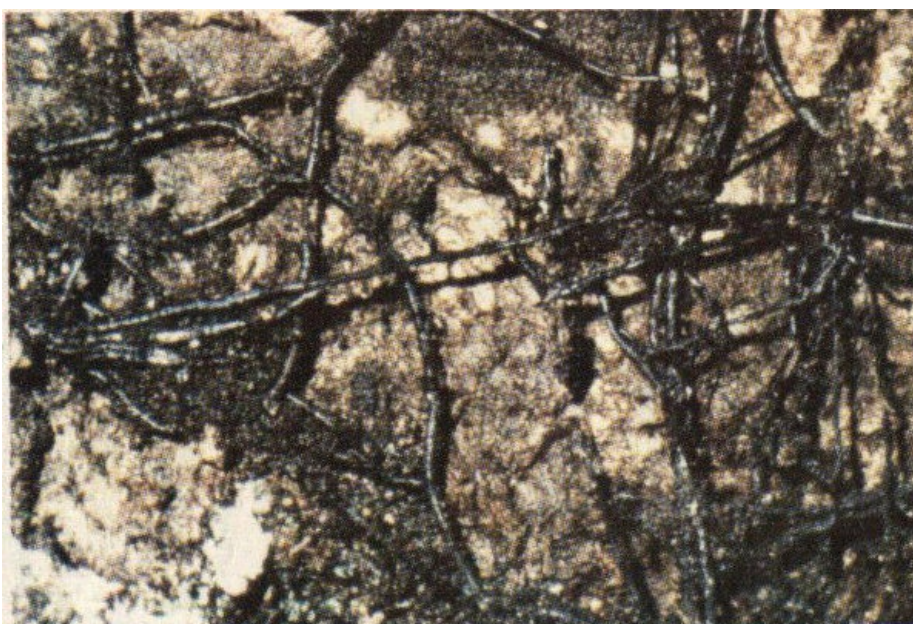


***Mushroom or fruiting bodies of the "honey mushroom" rot.***

Armillaria root and butt rot is caused by the fungus *Armillaria mellea*. This disease is common in orchards, vineyards, gardens, parks, and forests throughout the world. Both coniferous and hardwood forest trees are attacked. The fungus is especially troublesome in plantations, particularly in stands recently thinned.

The fungus is spread by spores produced by honey-colored mushrooms, rhizomorphs, and root contacts between diseased trees or stumps and healthy trees. Rhizomorphs are visible strands of compacted mycelium (fungus material) that appear as black or reddish-brown "shoestrings." They may be flattened when found between bark and wood or cylindrical when found in decayed wood or soil. Rhizomorphs increase in length at their tips and in this manner the fungus may move through the soil from infected trees to uninfected trees. The honey-colored mushrooms are produced annually and are fairly short lived; they are subject to desiccation, and are favored by small mammals. The size of the top varies from two to five inches in diameter. The top is usually flecked with dark brown scales. White to light yellow gills are borne underneath. Crown symptoms of the trees affected are similar to those caused by any malfunctioning of the roots. A reduction in size and production of leaves or needles, a general thinning of the crown, branch dying, and yellowing of foliage may precede death or trees may die rapidly with a rapid red discoloration of the foliage. Trees often die in groups, but single-tree kill is also common. Cankers bleeding resin, gum or other exudate at the tree base are common symptoms.

Control is not attempted for this disease under forest conditions. Losses may be reduced by following proper planting procedures, and by salvage cutting.



***Shoestrings of armillaria.***

This nursery disease is caused by two fungi species. *Cylindrocladium scoparium* and *C. floridanum*: *Cylindrocladium* root rot has been found on two hardwoods (yellow-poplar and black walnut) and two conifers (white pine and Fraser fir) in forest tree nurseries in six southern states. These include Virginia, West Virginia, North Carolina, Tennessee, Alabama, and Mississippi.



***Leaf symptoms on 1-0 black walnut nursery stock.***

Root rot symptoms on hardwoods and conifers are quite different. The most characteristic root symptoms on yellow-poplar and black walnut are the blackened and longitudinally-cracked infected roots that are in sharp contrast with healthy white roots of these two species. Infected seedling leaves become yellow and later turn reddish-brown.

Root rot symptoms on conifers involve either rotting of the seed or seedling (pre-emergence damping off) before emergence from the soil or seedling root rot following emergence. These symptoms also involve a shrivelling and reddening of foliage, needle blight, and stem cankers. The most characteristic symptoms are the “patchy” irregularly scattered pattern of infection in conifer seedling beds and the loosening of the root epidermis on infected roots—making it very easy to pull off.



***Root symptoms on 1-0 yellow-poplar nursery stock.***

The most practical and effective control for root rot diseases of this type involves strict quarantine to either keep the disease out of the nursery or keep it confined to known infected areas by avoiding the transportation of root

material, organic matter, and soil from infected to non-infected seed beds. Soil fumigation may control this disease if applied under favorable conditions.

## LUCIDUS ROOT AND BUTT ROT



***Fruiting body of Lucidus root and butt rot on mimosa.***

*Polyporus lucidus* is the cause of root and basal stem decay of hardwood trees throughout the eastern, central, and southern portions of the United States. The fungus is known to attack and kill maple, hackberry, orange, lemon, ash, sweetgum, oak, locust, elm, tupelo, willow, and mimosa. Mimosa trees are very susceptible to attack by *P. lucidus* throughout the South.

The disease is characterized by a rapid decline and death of the host. Examination of infected roots will reveal a soft spongy white rot with black spots scattered throughout. Fruiting bodies are formed at the base of infected trees or on the surface of exposed roots. The mature fruiting bodies are a reddish brown above and white below, with the tops and stems appearing glazed or varnished. The fungus is believed to gain entrance into the host through bark and root injuries and can spread from infected to healthy trees through root contacts and grafts.

No control is known for this disease. Avoidance of lawnmower and other mechanical injuries to the base of roots of susceptible shade trees will reduce the chance of infection by the fungus. The spread of the disease from infected to healthy trees can be reduced by planting at a wide enough spacing to avoid root contacts and grafts.

---

*If you find damage on your trees from insects or diseases you may consult with any of the following offices or your state forester.*

### FIELD OFFICES:

#### Alexandria Office

U.S. Forest Service  
2500 Shreveport Highway  
Pineville, Louisiana 71360  
Phone A/C 318 445-6511 Ext. 311

#### FOR STATES OF:

Alabama  
Arkansas  
Louisiana  
Mississippi  
Oklahoma  
Texas

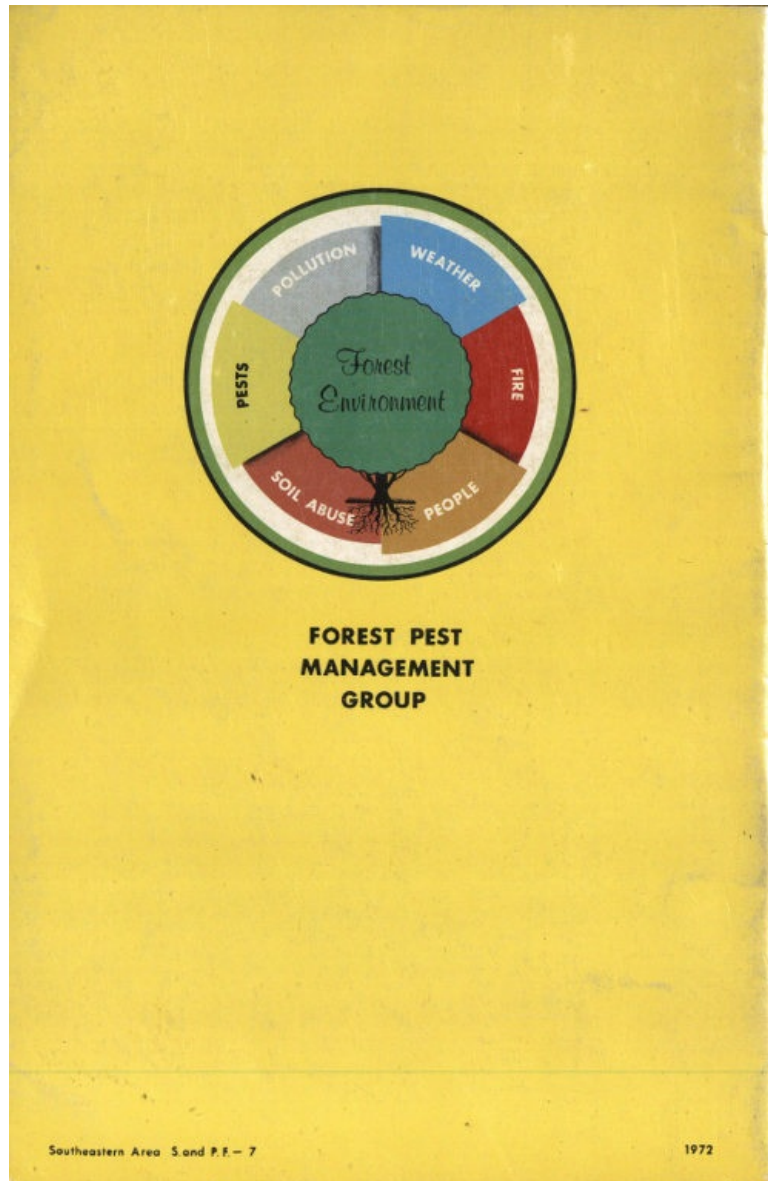
#### Asheville Office

U.S. Forest Service  
P.O. Box 5895  
Asheville, North Carolina 28803  
Phone A/C 704 254-0961 Ext. 625

#### FOR STATES OF:

Florida  
Georgia  
Kentucky  
North Carolina

South Carolina  
Tennessee  
Virginia  
AREA OFFICE  
Group Leader  
Forest Pest Management Group  
U.S. Forest Service  
1720 Peachtree Street, N.W.  
Atlanta, Georgia 30309  
Phone A/C 404 526-3734



## **FOREST PEST MANAGEMENT GROUP**

Southeastern Area S. and P. F.—7 1972

### **Transcriber's Notes**

- Silently corrected a few palpable typos.
- In the text versions, delimited italics or underlined text in underscores (the HTML version reproduces the font form of the printed book.)

\*\*\* END OF THE PROJECT GUTENBERG EBOOK INSECTS AND DISEASES OF TREES IN THE SOUTH \*\*\*

Updated editions will replace the previous one—the old editions will be renamed.

Creating the works from print editions not protected by U.S. copyright law means that no one owns a United

States copyright in these works, so the Foundation (and you!) can copy and distribute it in the United States without permission and without paying copyright royalties. Special rules, set forth in the General Terms of Use part of this license, apply to copying and distributing Project Gutenberg™ electronic works to protect the PROJECT GUTENBERG™ concept and trademark. Project Gutenberg is a registered trademark, and may not be used if you charge for an eBook, except by following the terms of the trademark license, including paying royalties for use of the Project Gutenberg trademark. If you do not charge anything for copies of this eBook, complying with the trademark license is very easy. You may use this eBook for nearly any purpose such as creation of derivative works, reports, performances and research. Project Gutenberg eBooks may be modified and printed and given away—you may do practically ANYTHING in the United States with eBooks not protected by U.S. copyright law. Redistribution is subject to the trademark license, especially commercial redistribution.

START: FULL LICENSE  
THE FULL PROJECT GUTENBERG LICENSE  
PLEASE READ THIS BEFORE YOU DISTRIBUTE OR USE THIS WORK

To protect the Project Gutenberg™ mission of promoting the free distribution of electronic works, by using or distributing this work (or any other work associated in any way with the phrase “Project Gutenberg”), you agree to comply with all the terms of the Full Project Gutenberg™ License available with this file or online at [www.gutenberg.org/license](http://www.gutenberg.org/license).

### **Section 1. General Terms of Use and Redistributing Project Gutenberg™ electronic works**

1.A. By reading or using any part of this Project Gutenberg™ electronic work, you indicate that you have read, understand, agree to and accept all the terms of this license and intellectual property (trademark/copyright) agreement. If you do not agree to abide by all the terms of this agreement, you must cease using and return or destroy all copies of Project Gutenberg™ electronic works in your possession. If you paid a fee for obtaining a copy of or access to a Project Gutenberg™ electronic work and you do not agree to be bound by the terms of this agreement, you may obtain a refund from the person or entity to whom you paid the fee as set forth in paragraph 1.E.8.

1.B. “Project Gutenberg” is a registered trademark. It may only be used on or associated in any way with an electronic work by people who agree to be bound by the terms of this agreement. There are a few things that you can do with most Project Gutenberg™ electronic works even without complying with the full terms of this agreement. See paragraph 1.C below. There are a lot of things you can do with Project Gutenberg™ electronic works if you follow the terms of this agreement and help preserve free future access to Project Gutenberg™ electronic works. See paragraph 1.E below.

1.C. The Project Gutenberg Literary Archive Foundation (“the Foundation” or PGLAF), owns a compilation copyright in the collection of Project Gutenberg™ electronic works. Nearly all the individual works in the collection are in the public domain in the United States. If an individual work is unprotected by copyright law in the United States and you are located in the United States, we do not claim a right to prevent you from copying, distributing, performing, displaying or creating derivative works based on the work as long as all references to Project Gutenberg are removed. Of course, we hope that you will support the Project Gutenberg™ mission of promoting free access to electronic works by freely sharing Project Gutenberg™ works in compliance with the terms of this agreement for keeping the Project Gutenberg™ name associated with the work. You can easily comply with the terms of this agreement by keeping this work in the same format with its attached full Project Gutenberg™ License when you share it without charge with others.

1.D. The copyright laws of the place where you are located also govern what you can do with this work. Copyright laws in most countries are in a constant state of change. If you are outside the United States, check the laws of your country in addition to the terms of this agreement before downloading, copying, displaying, performing, distributing or creating derivative works based on this work or any other Project Gutenberg™ work. The Foundation makes no representations concerning the copyright status of any work in any country other than the United States.

1.E. Unless you have removed all references to Project Gutenberg:

1.E.1. The following sentence, with active links to, or other immediate access to, the full Project Gutenberg™ License must appear prominently whenever any copy of a Project Gutenberg™ work (any work on which the phrase “Project Gutenberg” appears, or with which the phrase “Project Gutenberg” is associated) is accessed, displayed, performed, viewed, copied or distributed:

This eBook is for the use of anyone anywhere in the United States and most other parts of the world at no cost and with almost no restrictions whatsoever. You may copy it, give it away or re-use it under the terms of the Project Gutenberg License included with this eBook or online at [www.gutenberg.org](http://www.gutenberg.org). If you are not located in the United States, you will have to check the laws of the country where you are located before using this eBook.

1.E.2. If an individual Project Gutenberg™ electronic work is derived from texts not protected by U.S. copyright law (does not contain a notice indicating that it is posted with permission of the copyright holder), the work can be copied and distributed to anyone in the United States without paying any fees or charges. If you are redistributing or providing access to a work with the phrase “Project Gutenberg” associated with or appearing on the work, you must comply either with the requirements of paragraphs 1.E.1 through 1.E.7 or obtain permission for the use of the work and the Project Gutenberg™ trademark as set forth in paragraphs

1.E.8 or 1.E.9.

1.E.3. If an individual Project Gutenberg™ electronic work is posted with the permission of the copyright holder, your use and distribution must comply with both paragraphs 1.E.1 through 1.E.7 and any additional terms imposed by the copyright holder. Additional terms will be linked to the Project Gutenberg™ License for all works posted with the permission of the copyright holder found at the beginning of this work.

1.E.4. Do not unlink or detach or remove the full Project Gutenberg™ License terms from this work, or any files containing a part of this work or any other work associated with Project Gutenberg™.

1.E.5. Do not copy, display, perform, distribute or redistribute this electronic work, or any part of this electronic work, without prominently displaying the sentence set forth in paragraph 1.E.1 with active links or immediate access to the full terms of the Project Gutenberg™ License.

1.E.6. You may convert to and distribute this work in any binary, compressed, marked up, nonproprietary or proprietary form, including any word processing or hypertext form. However, if you provide access to or distribute copies of a Project Gutenberg™ work in a format other than "Plain Vanilla ASCII" or other format used in the official version posted on the official Project Gutenberg™ website (www.gutenberg.org), you must, at no additional cost, fee or expense to the user, provide a copy, a means of exporting a copy, or a means of obtaining a copy upon request, of the work in its original "Plain Vanilla ASCII" or other form. Any alternate format must include the full Project Gutenberg™ License as specified in paragraph 1.E.1.

1.E.7. Do not charge a fee for access to, viewing, displaying, performing, copying or distributing any Project Gutenberg™ works unless you comply with paragraph 1.E.8 or 1.E.9.

1.E.8. You may charge a reasonable fee for copies of or providing access to or distributing Project Gutenberg™ electronic works provided that:

- You pay a royalty fee of 20% of the gross profits you derive from the use of Project Gutenberg™ works calculated using the method you already use to calculate your applicable taxes. The fee is owed to the owner of the Project Gutenberg™ trademark, but he has agreed to donate royalties under this paragraph to the Project Gutenberg Literary Archive Foundation. Royalty payments must be paid within 60 days following each date on which you prepare (or are legally required to prepare) your periodic tax returns. Royalty payments should be clearly marked as such and sent to the Project Gutenberg Literary Archive Foundation at the address specified in Section 4, "Information about donations to the Project Gutenberg Literary Archive Foundation."
- You provide a full refund of any money paid by a user who notifies you in writing (or by e-mail) within 30 days of receipt that s/he does not agree to the terms of the full Project Gutenberg™ License. You must require such a user to return or destroy all copies of the works possessed in a physical medium and discontinue all use of and all access to other copies of Project Gutenberg™ works.
- You provide, in accordance with paragraph 1.F.3, a full refund of any money paid for a work or a replacement copy, if a defect in the electronic work is discovered and reported to you within 90 days of receipt of the work.
- You comply with all other terms of this agreement for free distribution of Project Gutenberg™ works.

1.E.9. If you wish to charge a fee or distribute a Project Gutenberg™ electronic work or group of works on different terms than are set forth in this agreement, you must obtain permission in writing from the Project Gutenberg Literary Archive Foundation, the manager of the Project Gutenberg™ trademark. Contact the Foundation as set forth in Section 3 below.

1.F.

1.F.1. Project Gutenberg volunteers and employees expend considerable effort to identify, do copyright research on, transcribe and proofread works not protected by U.S. copyright law in creating the Project Gutenberg™ collection. Despite these efforts, Project Gutenberg™ electronic works, and the medium on which they may be stored, may contain "Defects," such as, but not limited to, incomplete, inaccurate or corrupt data, transcription errors, a copyright or other intellectual property infringement, a defective or damaged disk or other medium, a computer virus, or computer codes that damage or cannot be read by your equipment.

1.F.2. LIMITED WARRANTY, DISCLAIMER OF DAMAGES - Except for the "Right of Replacement or Refund" described in paragraph 1.F.3, the Project Gutenberg Literary Archive Foundation, the owner of the Project Gutenberg™ trademark, and any other party distributing a Project Gutenberg™ electronic work under this agreement, disclaim all liability to you for damages, costs and expenses, including legal fees. YOU AGREE THAT YOU HAVE NO REMEDIES FOR NEGLIGENCE, STRICT LIABILITY, BREACH OF WARRANTY OR BREACH OF CONTRACT EXCEPT THOSE PROVIDED IN PARAGRAPH 1.F.3. YOU AGREE THAT THE FOUNDATION, THE TRADEMARK OWNER, AND ANY DISTRIBUTOR UNDER THIS AGREEMENT WILL NOT BE LIABLE TO YOU FOR ACTUAL, DIRECT, INDIRECT, CONSEQUENTIAL, PUNITIVE OR INCIDENTAL DAMAGES EVEN IF YOU GIVE NOTICE OF THE POSSIBILITY OF SUCH DAMAGE.

1.F.3. LIMITED RIGHT OF REPLACEMENT OR REFUND - If you discover a defect in this electronic work within 90 days of receiving it, you can receive a refund of the money (if any) you paid for it by sending a written explanation to the person you received the work from. If you received the work on a physical medium, you must return the medium with your written explanation. The person or entity that provided you with the



defective work may elect to provide a replacement copy in lieu of a refund. If you received the work electronically, the person or entity providing it to you may choose to give you a second opportunity to receive the work electronically in lieu of a refund. If the second copy is also defective, you may demand a refund in writing without further opportunities to fix the problem.

1.F.4. Except for the limited right of replacement or refund set forth in paragraph 1.F.3, this work is provided to you 'AS-IS', WITH NO OTHER WARRANTIES OF ANY KIND, EXPRESS OR IMPLIED, INCLUDING BUT NOT LIMITED TO WARRANTIES OF MERCHANTABILITY OR FITNESS FOR ANY PURPOSE.

1.F.5. Some states do not allow disclaimers of certain implied warranties or the exclusion or limitation of certain types of damages. If any disclaimer or limitation set forth in this agreement violates the law of the state applicable to this agreement, the agreement shall be interpreted to make the maximum disclaimer or limitation permitted by the applicable state law. The invalidity or unenforceability of any provision of this agreement shall not void the remaining provisions.

1.F.6. INDEMNITY - You agree to indemnify and hold the Foundation, the trademark owner, any agent or employee of the Foundation, anyone providing copies of Project Gutenberg™ electronic works in accordance with this agreement, and any volunteers associated with the production, promotion and distribution of Project Gutenberg™ electronic works, harmless from all liability, costs and expenses, including legal fees, that arise directly or indirectly from any of the following which you do or cause to occur: (a) distribution of this or any Project Gutenberg™ work, (b) alteration, modification, or additions or deletions to any Project Gutenberg™ work, and (c) any Defect you cause.

## **Section 2. Information about the Mission of Project Gutenberg™**

Project Gutenberg™ is synonymous with the free distribution of electronic works in formats readable by the widest variety of computers including obsolete, old, middle-aged and new computers. It exists because of the efforts of hundreds of volunteers and donations from people in all walks of life.

Volunteers and financial support to provide volunteers with the assistance they need are critical to reaching Project Gutenberg™'s goals and ensuring that the Project Gutenberg™ collection will remain freely available for generations to come. In 2001, the Project Gutenberg Literary Archive Foundation was created to provide a secure and permanent future for Project Gutenberg™ and future generations. To learn more about the Project Gutenberg Literary Archive Foundation and how your efforts and donations can help, see Sections 3 and 4 and the Foundation information page at [www.gutenberg.org](http://www.gutenberg.org).

## **Section 3. Information about the Project Gutenberg Literary Archive Foundation**

The Project Gutenberg Literary Archive Foundation is a non-profit 501(c)(3) educational corporation organized under the laws of the state of Mississippi and granted tax exempt status by the Internal Revenue Service. The Foundation's EIN or federal tax identification number is 64-6221541. Contributions to the Project Gutenberg Literary Archive Foundation are tax deductible to the full extent permitted by U.S. federal laws and your state's laws.

The Foundation's business office is located at 809 North 1500 West, Salt Lake City, UT 84116, (801) 596-1887. Email contact links and up to date contact information can be found at the Foundation's website and official page at [www.gutenberg.org/contact](http://www.gutenberg.org/contact)

## **Section 4. Information about Donations to the Project Gutenberg Literary Archive Foundation**

Project Gutenberg™ depends upon and cannot survive without widespread public support and donations to carry out its mission of increasing the number of public domain and licensed works that can be freely distributed in machine-readable form accessible by the widest array of equipment including outdated equipment. Many small donations (\$1 to \$5,000) are particularly important to maintaining tax exempt status with the IRS.

The Foundation is committed to complying with the laws regulating charities and charitable donations in all 50 states of the United States. Compliance requirements are not uniform and it takes a considerable effort, much paperwork and many fees to meet and keep up with these requirements. We do not solicit donations in locations where we have not received written confirmation of compliance. To SEND DONATIONS or determine the status of compliance for any particular state visit [www.gutenberg.org/donate](http://www.gutenberg.org/donate).

While we cannot and do not solicit contributions from states where we have not met the solicitation requirements, we know of no prohibition against accepting unsolicited donations from donors in such states who approach us with offers to donate.

International donations are gratefully accepted, but we cannot make any statements concerning tax treatment of donations received from outside the United States. U.S. laws alone swamp our small staff.

Please check the Project Gutenberg web pages for current donation methods and addresses. Donations are accepted in a number of other ways including checks, online payments and credit card donations. To donate, please visit: [www.gutenberg.org/donate](http://www.gutenberg.org/donate)

## **Section 5. General Information About Project Gutenberg™ electronic works**

Professor Michael S. Hart was the originator of the Project Gutenberg™ concept of a library of electronic works that could be freely shared with anyone. For forty years, he produced and distributed Project Gutenberg™ eBooks with only a loose network of volunteer support.

Project Gutenberg™ eBooks are often created from several printed editions, all of which are confirmed as not protected by copyright in the U.S. unless a copyright notice is included. Thus, we do not necessarily keep eBooks in compliance with any particular paper edition.

Most people start at our website which has the main PG search facility: [www.gutenberg.org](http://www.gutenberg.org).

This website includes information about Project Gutenberg™, including how to make donations to the Project Gutenberg Literary Archive Foundation, how to help produce our new eBooks, and how to subscribe to our email newsletter to hear about new eBooks.